

EXPLANATION

- Qal
Alluvium, landslides, and lake sediments
 - Tk
Knight(?) formation
 - pEmg
Migmatite, and granulite facies, undifferentiated
- } QUATERNARY
} TERTIARY
} PRECAMBRIAN

Contact
Approximately located

Normal fault
Dotted where concealed

Thrust fault
Dashed where approximately located;
dotted where concealed. Barbs on
upper plate

50
Strike and dip of foliation

*36
Radon content
Micromicrocuries per liter. *Denotes spring.
Underlined radon measurements in Gateway
Tunnel springs are minimum values

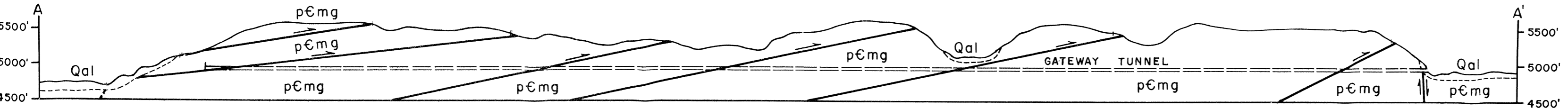
7.50 cfs
Stream-flow measurements
Cubic feet per second

(1.2)
Calculated increment of ground-water addition
to stream flow
Cubic feet per second. Based on radon
measurements

A
Point location
Described in text

Base map from U.S. Bureau of Reclamation,
Ogden, Utah.

Geology from G. L. Bell, Geology of the Pre-
Cambrian metamorphic terrane, Farmington
Mountains, Utah: Ph. D. thesis, University of
Utah, 1951.



GEOLOGIC MAP AND SECTION OF PART OF THE LOWER WEBER RIVER AREA, NORTH-CENTRAL UTAH,
SHOWING RADON DISTRIBUTION IN STREAMS AND SPRING WATERS

467830 O -59 (in pocket)