

EXPLANATION

Trace of coal bed at bedrock surface
 Solid where located from outcrop or drill hole data; dashed where approximately located; short dashes where inferred

Strike and dip of beds

Prospect tunnel

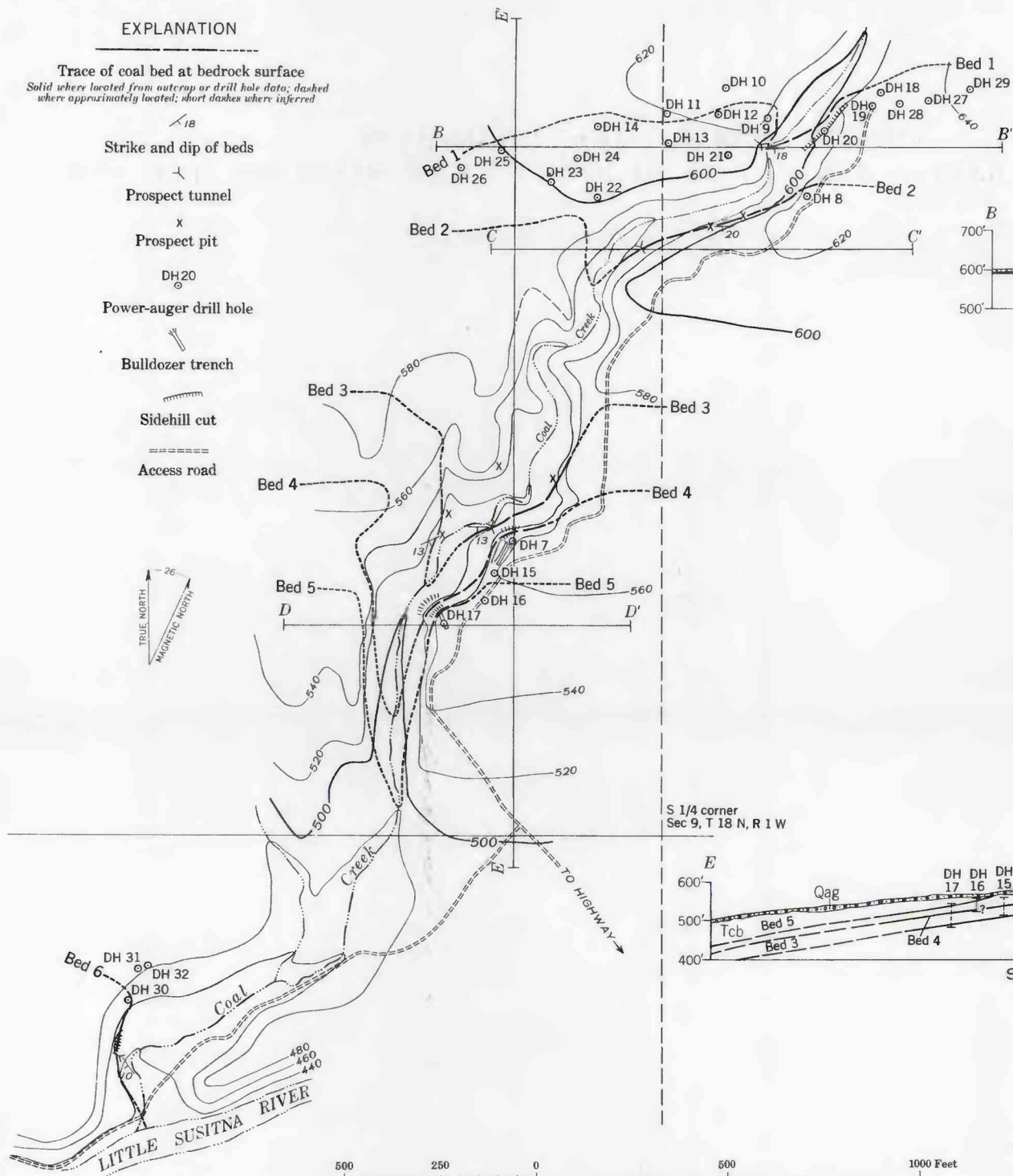
Prospect pit

Power-auger drill hole

Bulldozer trench

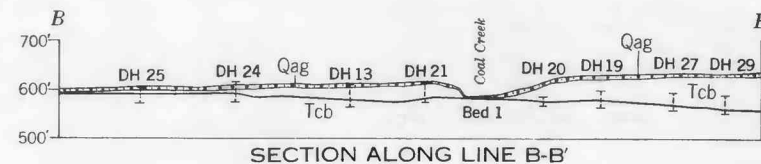
Sidehill cut

Access road

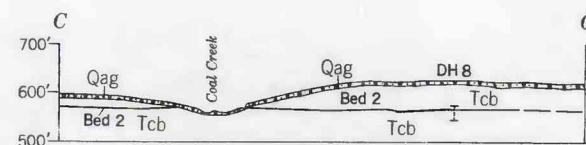


500 250 0 500 1000 Feet

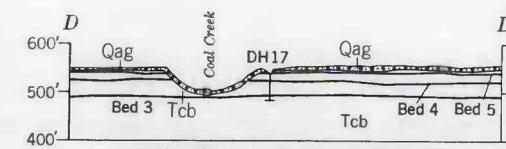
Contour interval 20 feet
 Datum is approximate mean sea level



SECTION ALONG LINE B-B'

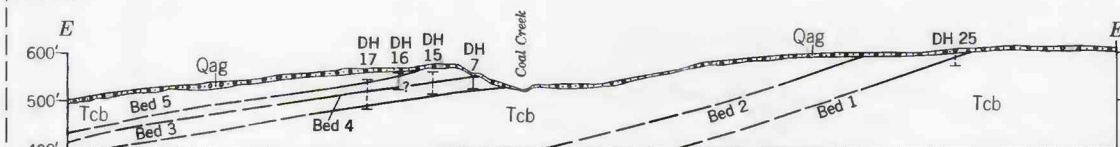


SECTION ALONG LINE C-C'



SECTION ALONG LINE D-D'

S 1/4 corner
 Sec 9, T 18 N, R 1 W



SECTION ALONG LINE E-E'

EXPLANATION FOR SECTIONS

Qag
 Quaternary alluvial and glacial deposits

Tcb
 Tertiary coal-bearing formation

DH 17
 I

Power-auger drill hole

Dashed where projected parallel to strike or dip into plane of section

MAP AND SECTIONS OF COAL LOCALITY 2, LITTLE SUSITNA DISTRICT
 MATANUSKA COAL FIELD, ALASKA