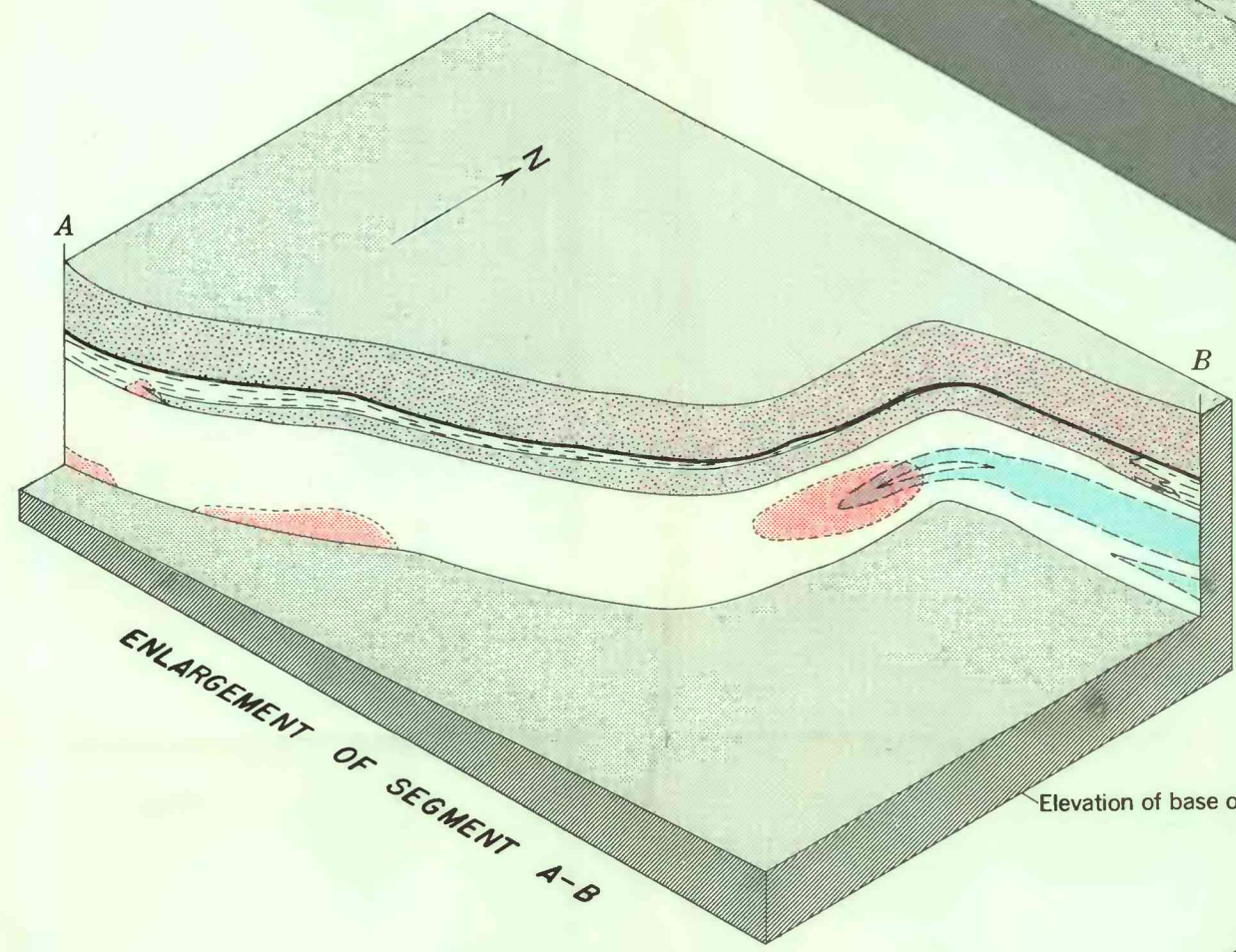
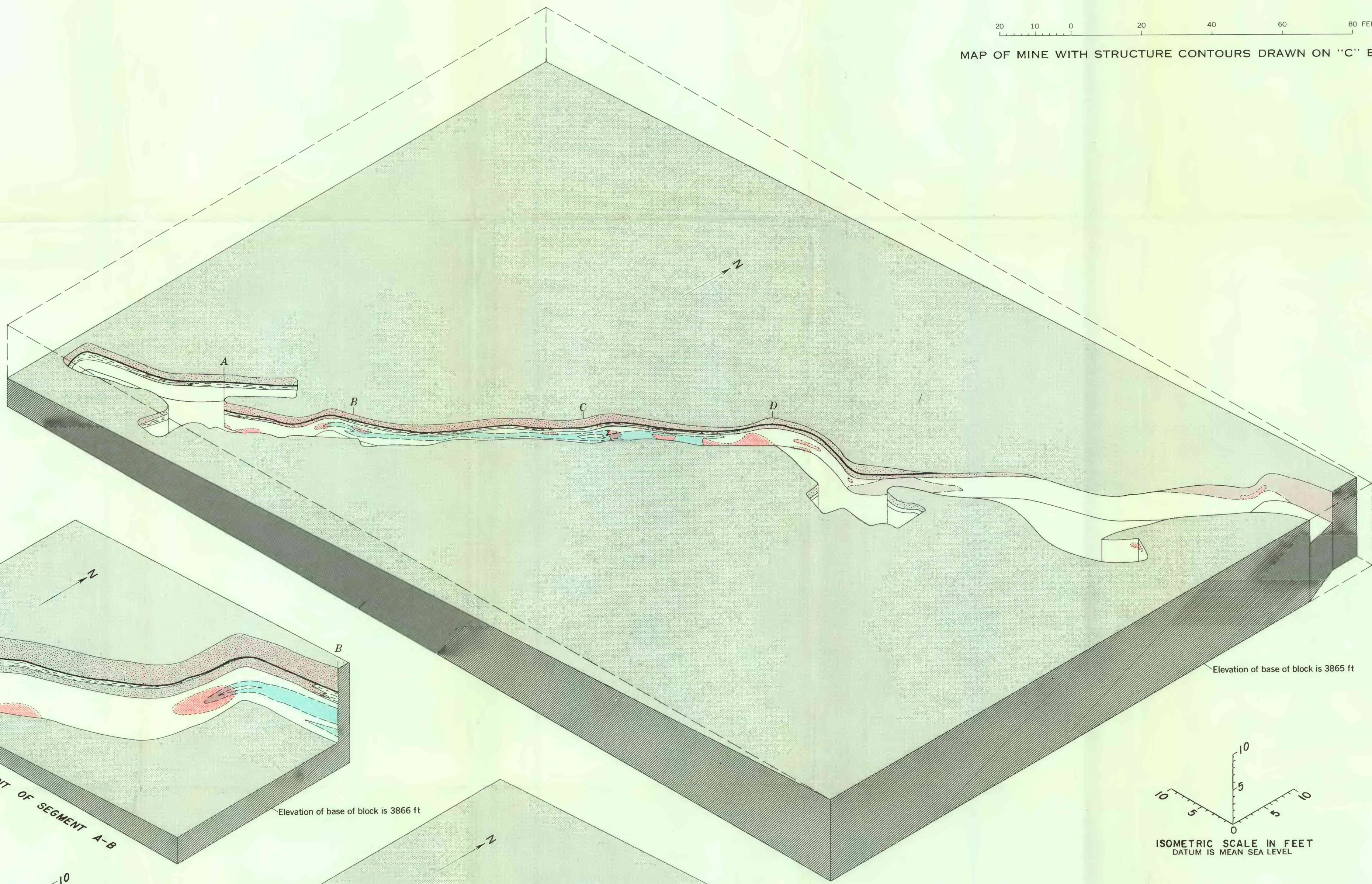


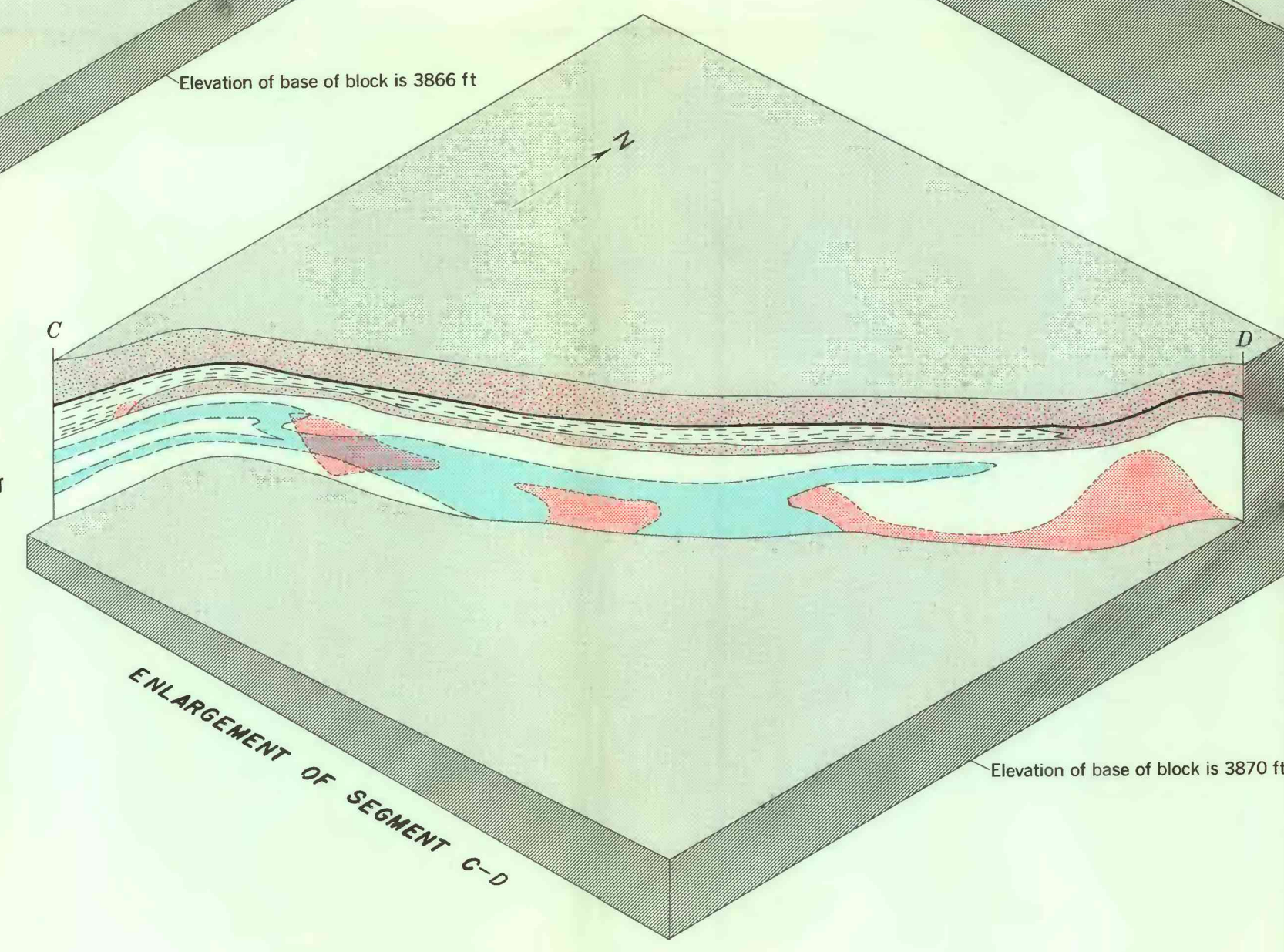
MAP OF MINE WITH STRUCTURE CONTOURS DRAWN ON "C" BED

20 10 0 20 40 60 80 FEET



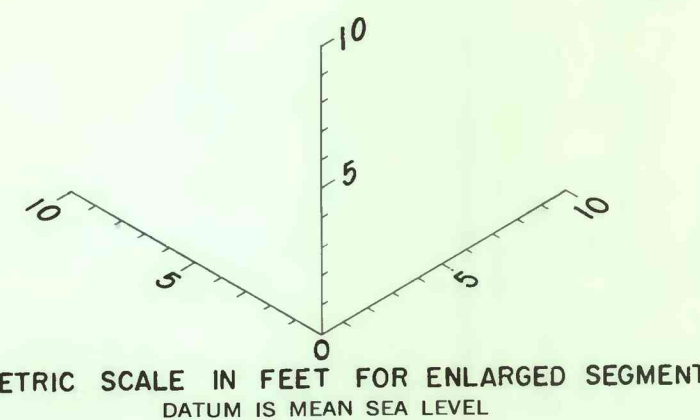
ENLARGEMENT OF SEGMENT A-B

Elevation of base of block is 3866 ft

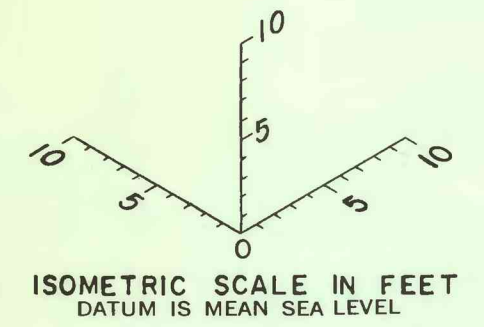


ENLARGEMENT OF SEGMENT C-D

Elevation of base of block is 3870 ft

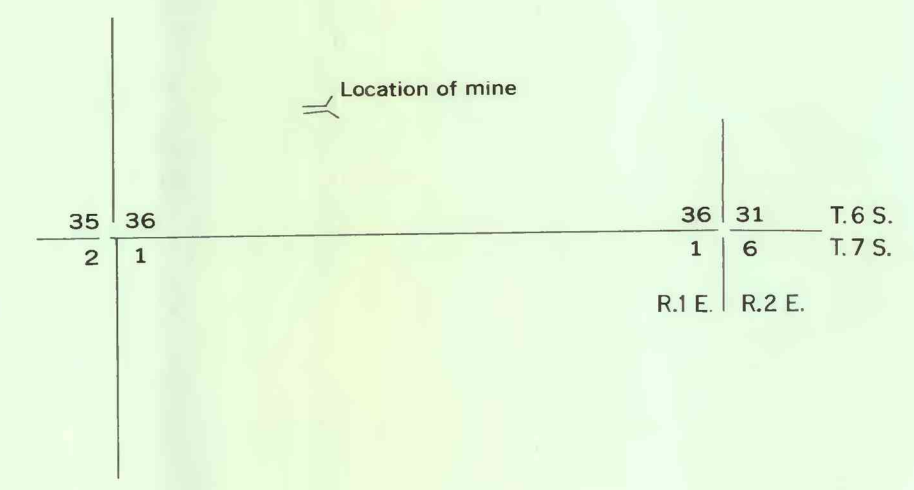


ISOMETRIC SCALE IN FEET FOR ENLARGED SEGMENT
DATUM IS MEAN SEA LEVEL



ISOMETRIC SCALE IN FEET
DATUM IS MEAN SEA LEVEL

- EXPLANATION**
- Siltstone and very fine grained sandstone
 - "C" bed, black claystone 1 to 2 inches thick
 - Laminated siltstone and sandstone
 - Thin-bedded siltstone
With many nearly vertical tubular structures
 - Ore interval
Based on Geiger counter reading of 1 milliroentgen per hour
 - Hematite stain
 - Wet areas on mine walls
 - Contact
 - Boundary of ore
 - Boundary of hematite stain
 - Boundary of wet areas
 - Boundary of open pit



ISOMETRIC PROJECTION OF THE FREEZEOUT MINE, SEC. 36, T. 6 S., R. 1 E., CUSTER COUNTY, SOUTH DAKOTA