

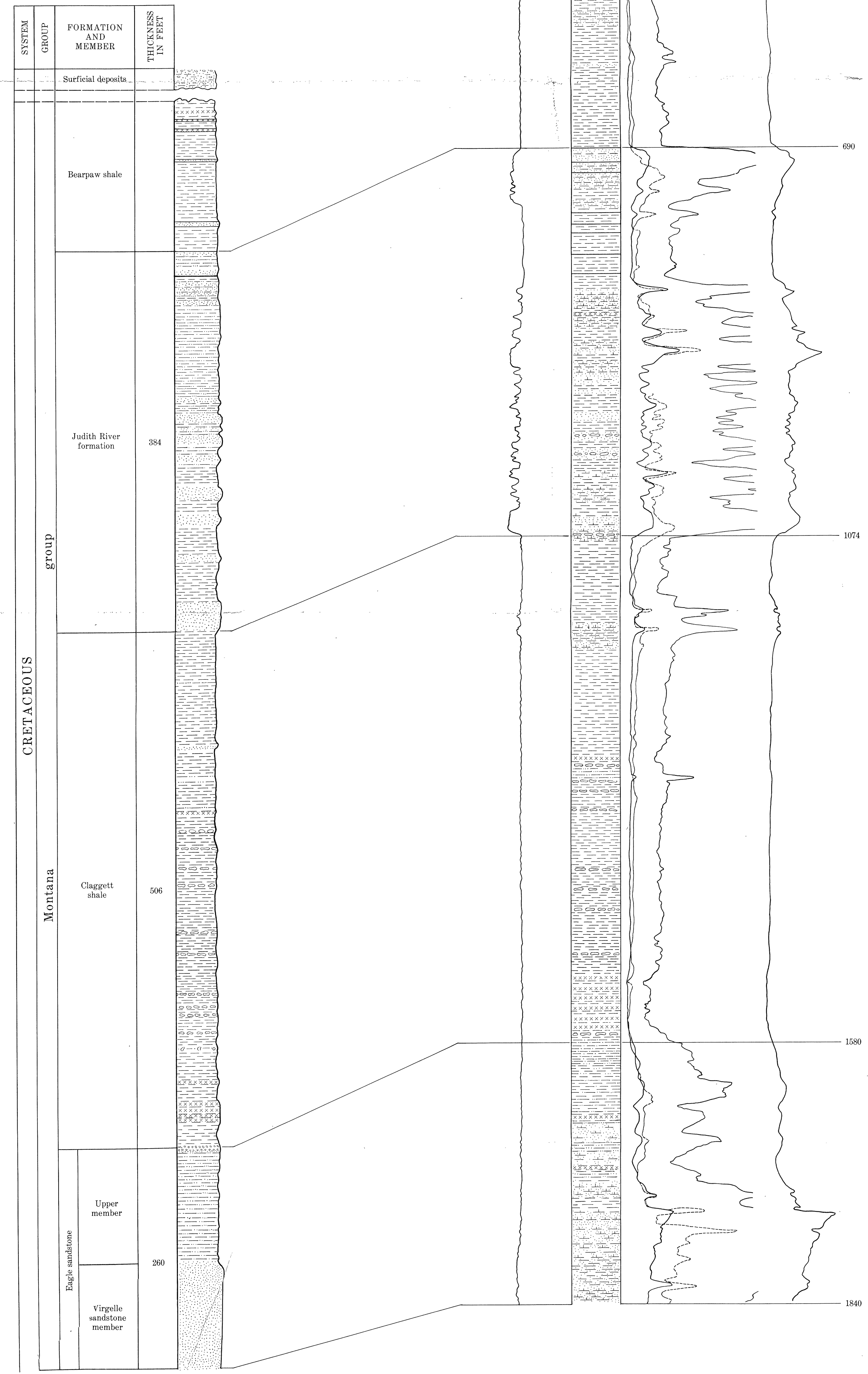
Electrical and sample logs of cuttings from  
Continental Oil Company  
South Zortman well 1  
Phillips County, Montana  
(Dry hole SZ-1)

Electrical and sample logs of cuttings from  
Continental Oil Company  
South Zortman well 1  
Phillips County, Montana  
(Dry hole SZ-1)

Generalized section exposed in Little  
Rocky Mountains and foothills  
Phillips and Blaine Counties  
Montana

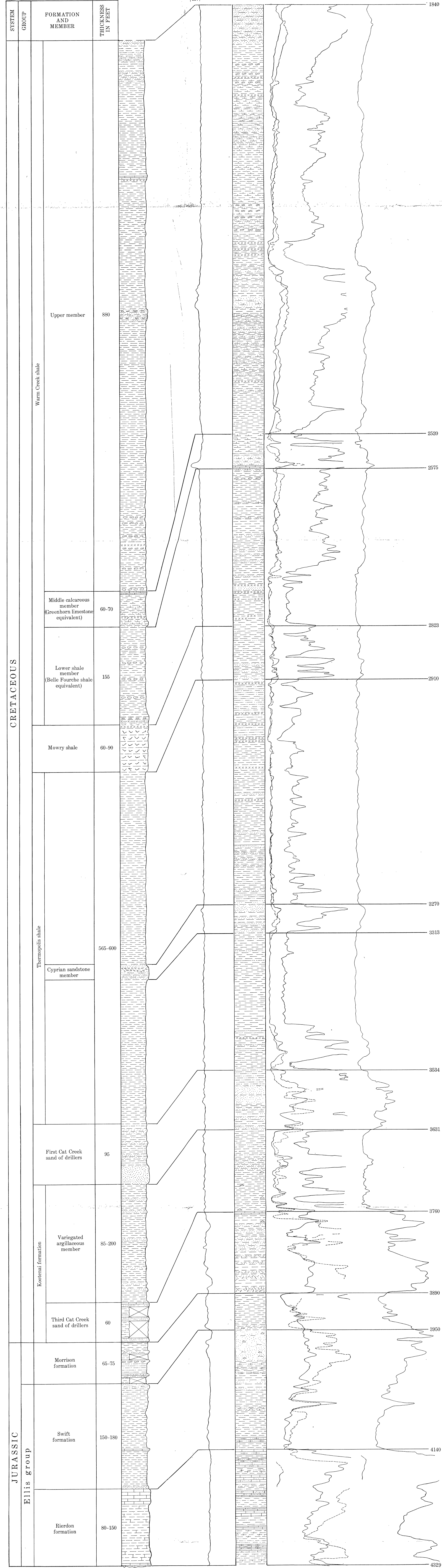
Radioactivity and sample logs of cuttings from  
Continental Oil Company  
South Zortman well 1  
Phillips County, Montana  
(Dry hole SZ-1)

Generalized section exposed in Little  
Rocky Mountains and foothills  
Phillips and Blaine Counties  
Montana

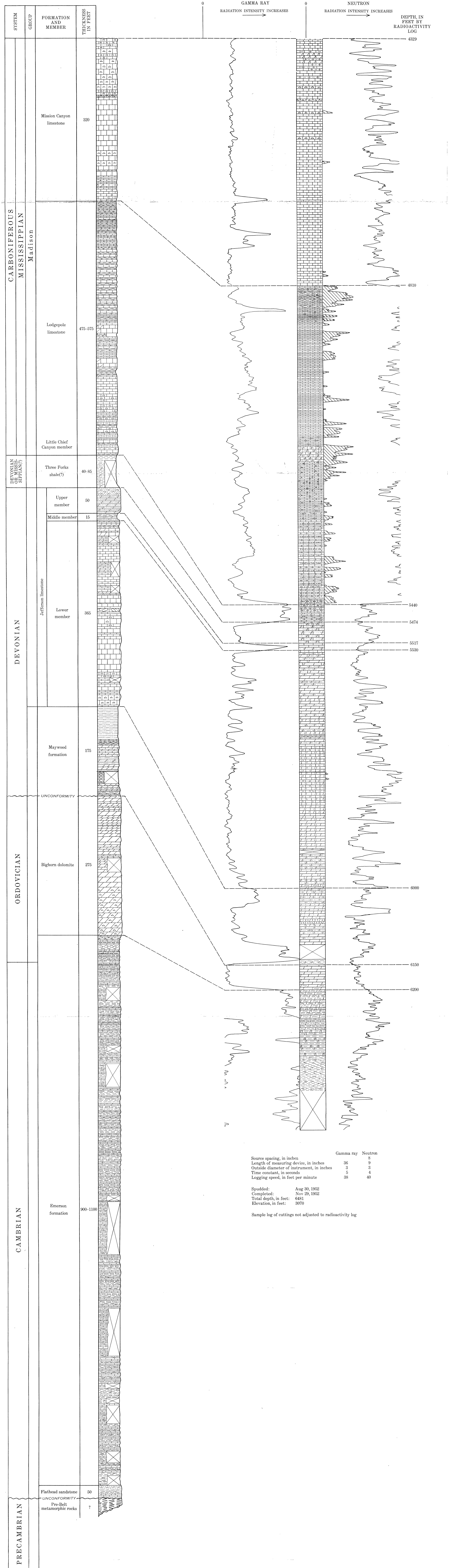


FORMATIONS OF MONTANA GROUP

LIMESTONE	DOLOMITE	SHALE	SANDSTONE
Dolomitic	Argillaceous	Calcareous	Calcareous
Argillaceous	Argillitic	Dolomitic	Argillaceous
Argillitic	Glaucous	Carbonaceous	Cherty
Glaucous	Cherty	Siliceous	Cherty
Cherty	Silty	Glaucous	Cherty
Silty	Conglomeratic	Cherty	Conglomeratic
Sandy	Siltstone	Sandy	Containing concretions
Conglomeratic		Containing concretions	CONGLOMERATE
Stromatopora reef		Containing bivalve bed	Interstratified



MESOZOIC ROCKS BELOW MONTANA GROUP



Source opening, in inches  
Length of measuring device, in inches  
Outside diameter of instrument, in inches  
Time constant, in seconds  
Logging speed, in feet per minute  
Gamma ray Neutron  
36 2  
2 2  
5 4  
28 40  
Spent: Aug 30, 1962  
Completed: Nov 29, 1962  
Total depth, in feet: 4661  
Elevation, in feet: 3870  
Sample log of cuttings not adjusted to radioactivity log

PALEOZOIC AND PRECAMBRIAN ROCKS