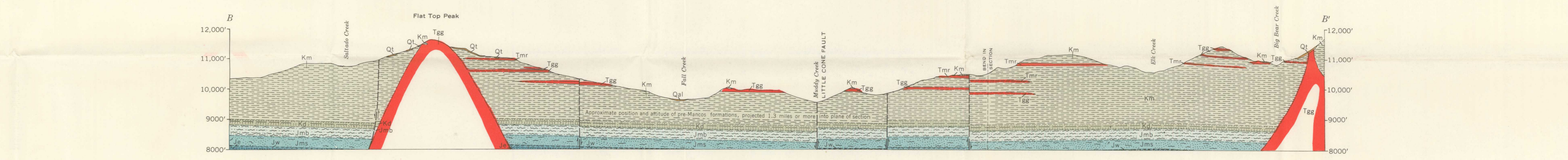
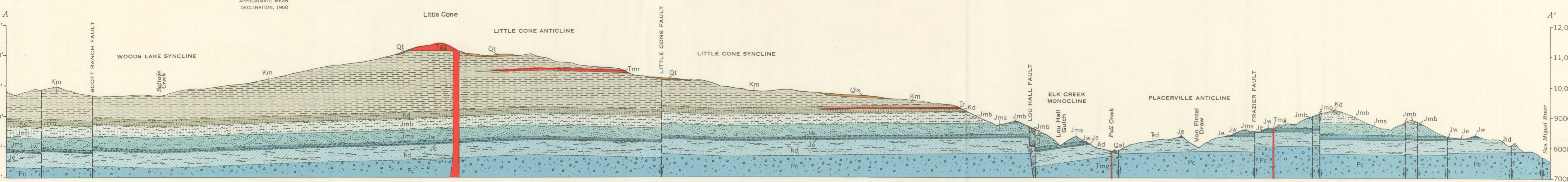


Base map by Topographic Division, U. S. Geological Survey, 1953

Geology mapped by A. L. Bush, C. S. Bromfield, O. T. Marsh, C. T. Pierson, R. B. Taylor, and W. F. Weeks in 1953-56



GEOLOGIC MAP AND SECTIONS OF THE LITTLE CONE QUADRANGLE, COLORADO

SCALE 1:24,000

CONTOUR INTERVAL 40 FEET
DATUM IS MEAN SEA LEVEL