

STRUCTURAL FEATURES

EXPLANATION

SEDIMENTARY ROCKS

Qal Alluvium, colluvium, glacial drift, and windblown sand, undifferentiated
 T₁ to T₁₀ Shown only where significant structural features or rock types may be concealed

SEDIMENTARY ROCKS

Su Sedimentary rocks

IGNEOUS AND METAMORPHIC ROCKS

Tu Intrusive rocks
 T₁ to T₁₀ Intrusive rocks
 pCm Metasedimentary rocks
 pC Coarsely crystalline rocks
 pCu Precambrian rocks, undifferentiated

CONTACTS

Fault Dashed where inferred or indefinite; dotted where concealed or recognized from subsurface data; covered where doubtful or probable. Arrows indicate relative movement; hachures are on a relatively downthrown side; crosses show direction of dip

Fault zone Low-angle thrust fault Dashed where approximate; dotted where concealed. Swathes on relatively overhead side

Fold symbols The following fold symbols are used where position of fold is known; dashed where indefinite or inferred; dotted where doubtful or probable. The relative wavelength of fold is indicated by length of measurement line. Structure contours indicate approximate configuration only

Anticline, showing crestline or trace of axial plane and direction of plunge
 Asymmetric anticline Short arrow indicates steeper limb

Overturned anticline, showing trace of axial plane and direction of dip of limbs

Broad anticline or arch, showing approximate position of crestline and direction of plunge
 Dips associated with these structural features are very low; position of crestline shown only within wide limits

Dome

Syncline, showing position of trough or trace of axial plane and direction of plunge
 Asymmetric syncline Short arrow indicates steeper limb

Overturned syncline, showing trace of axial plane and direction of dip of limbs

Broad syncline, showing approximate position of trough and direction of plunge
 Dips associated with these structural features are very low; position of trough shown only within wide limits

Anticlinal bend of monocline or terrace

Synclinal bend of monocline or terrace

Joints and small faults Some are filled by veins and dikes
 Vein or igneous dike Dashed where approximate
 Clastic dike

Intrusive rocks not exposed at surface

Direction of plunge of intrusion

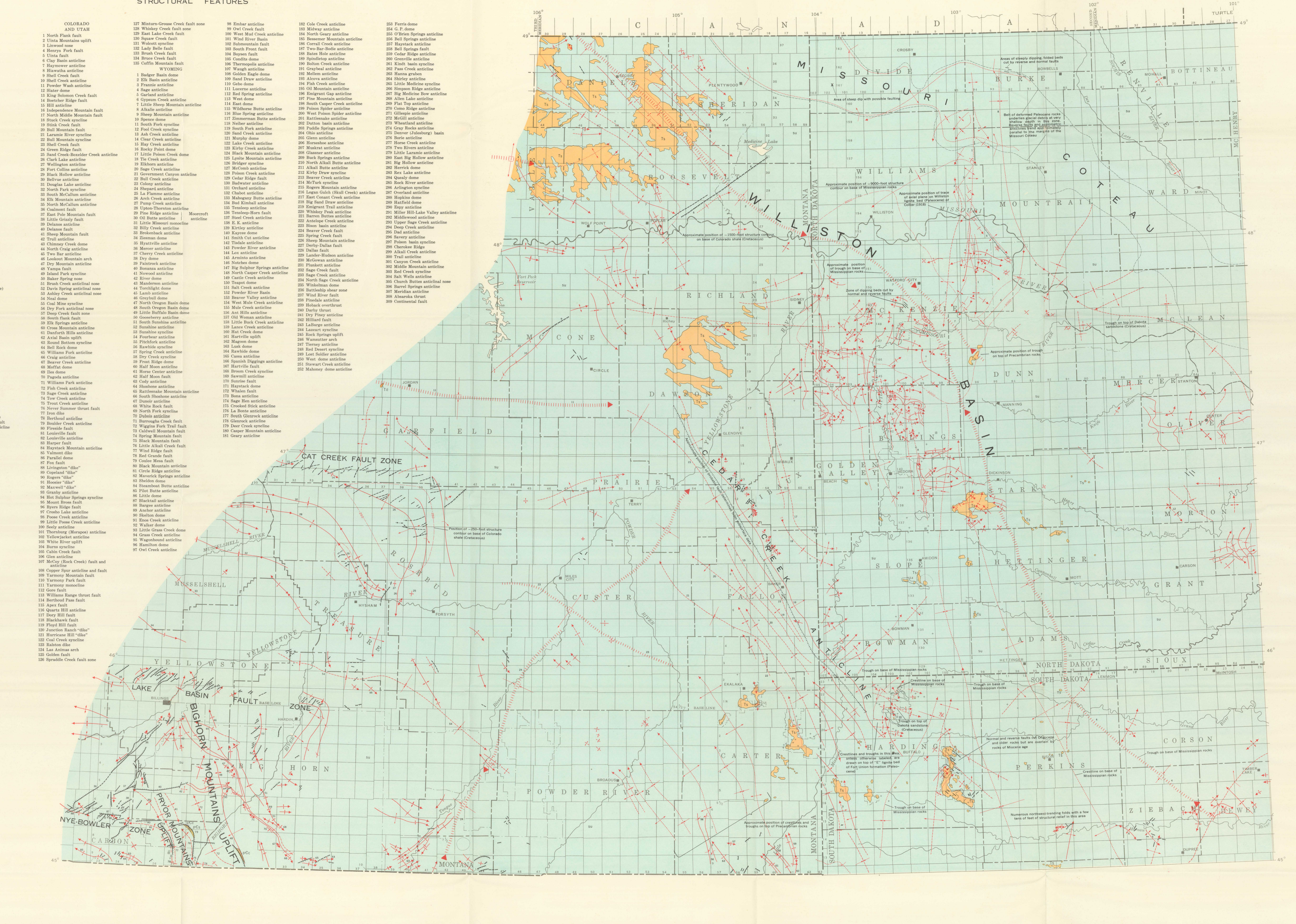
Border of Missouri Coteau

Numbers refer to list of named structural features

Uranium deposit or locality from which sample containing 0.01 percent or more of uranium was obtained or from which visible uranium minerals were obtained
 Box around symbol indicates deposit yielded uranium ore

Group of uranium deposits or localities

- NEBRASKA AND KANSAS**
- 1 Denver (Leasburg) basin
 2 Chadron arch uplift
 3 Kemmerly basin
- NORTH DAKOTA**
- 1 Tripp anticline
 2 Noonan anticline
 3 Beaver ledge anticline
 4 Keene dome
 5 Basins fault
 6 Smith basin
 7 Williston basin
 8 Killdeer syncline
 9 Fryburg anticline
 10 Cedar Creek anticline
 11 Lemmon syncline
 12 Almont-Glen Ullin anticline
- SOUTH DAKOTA**
- 1 Cedar Creek anticline
 2 Gallup Creek dome
 3 Gustave anticline
 4 Lemmon syncline
 5 Fort Elm anticline
 6 Flint Rock anticline
 7 Box Elder anticline
 8 Crow Creek syncline
 9 Dry Creek syncline
 10 Belle Fourche anticline
 11 Whitewood anticline
 12 Lead-Deadwood dome
 13 Bear Mountain dome
 14 Harney Peak dome
 15 Philip anticline
 16 Chadron arch
 17 Cascade Springs anticline
 18 Chasmodon anticline
 19 Dewey fault
- MONTANA**
- 1 Brevette nose
 2 Williston basin
 3 Ophir anticline
 4 Bowdoin dome
 5 Wolf Creek nose
 6 Rockwell-Pratt fault zone
 7 Poplar anticline
 8 Cheyenne nose
 9 Weldon fault
 10 Weldon monocline
 11 Blood Creek syncline
 12 Freedom dome
 13 East dome (C&A Creek anticline)
 14 Alice dome
 15 Sheep Mountain syncline
 16 Cedar Creek anticline
 17 Wibaux nose
 18 Little basin
 19 Pievan anticline
 20 Westmore anticline
 21 Kaibaka syncline
 22 Medicine Rocks anticline
 23 Miles City arch
 24 Tongue River syncline
 25 Antwerp anticline
 26 Torrance dome
 27 Cananda dome
 28 Sumatra anticline
 29 Ingomar dome
 30 Sumatra syncline
 31 Sagger Point dome
 32 Willow Creek syncline
 33 Bull Mountain syncline
 34 Crooked Creek anticline
 35 Devils Hole anticline
 36 Fremont fault zone
 37 Bluewater fault
 38 Frosty Jack fault
 39 West Pryor Mountain anticline
 40 North Pryor (Castle Butte) fault
 41 Northwart Pryor Mountain anticline
 42 Shively Hill dome
 43 Birchhead dome
 44 Boundary dome
 45 Miffin anticline
 46 Telegraph Creek anticline
 47 Bearpaw anticline
 48 Crooked Creek uplift
 49 Highhorn Mountains uplift
 50 Point Creek dome
 51 Crapvine dome
 52 Soap Creek anticline
 53 Woody Creek dome
 54 Two Leggin uplift
 55 Ashland syncline
 56 East Saryu anticline
 57 Camp Creek monocline
 58 Willow Creek anticline
 59 Seven Mile Creek anticline
 60 Albion anticline
 61 Colony anticline
 62 Bull Creek anticline
 63 Wolf Creek anticline
 64 Becker anticline
 65 Aberdeen uplift
 66 Black Gulch dome
 67 Sport Creek dome
 68 Botten Grass dome
 69 Soap Creek dome
 70 Reed dome
 71 Fort Smith anticline
 72 Dryhead syncline
 73 Dryhead fault
 74 Pecosine Spring fault
 75 Gore fault
 76 East Pryor Mountain anticline
 77 Gypsum Creek syncline
 78 Quartz Hill anticline
 79 Crooked Creek fault
 80 Sage Creek fault zone
 81 Big Pryor Mountain anticline
 82 Black Butte dome
 83 Franconia syncline
 84 Elk Basin anticline
 85 Red dome
 86 Bowler fault
 87 Dry Creek-Golden anticline
- WYOMING**
- 1 Badger Basin dome
 2 Elk Basin anticline
 3 Franconia anticline
 4 Sage anticline
 5 Grand anticline
 6 Gypsum Creek anticline
 7 Hill anticline
 8 Alkalie anticline
 9 Sheep Mountain anticline
 10 Sheep dome
 11 South Fork syncline
 12 Bull Mountain fault
 13 Ash Creek anticline
 14 East dome
 15 Hay Creek anticline
 16 Green Ridge fault
 17 Sand Creek-Bowdler Creek anticline
 18 Clark Lake anticline
 19 Rocky Point dome
 20 Clear Creek anticline
 21 Shell Creek anticline
 22 Government Canyon anticline
 23 Bull Creek anticline
 24 Colony anticline
 25 Fort Collins anticline
 26 La Flamme anticline
 27 Arch Creek anticline
 28 North McCullum anticline
 29 Upon-Thornton anticline
 30 Teton Ridge anticline
 31 Owl Butte anticline
 32 Little Missouri monocline
 33 Little Grizzly fault
 34 Delano anticline
 35 Brokenback anticline
 36 Smith Cut anticline
 37 Hyattville anticline
 38 Mercer anticline
 39 Palmer anticline
 40 North Craig anticline
 41 Two Bar anticline
 42 Lookout Mountain arch
 43 Dry Mountain anticline
 44 Island Park syncline
 45 Baker Spring nose
 46 Brush Creek anticline
 47 Davis Spring anticline
 48 Ashley Creek anticline
 49 Naia dome
 50 Cedar Mine syncline
 51 Dry Fork anticline
 52 Deep Creek fault zone
 53 South flank fault
 54 Elk Springs anticline
 55 Kaibaka syncline
 56 Danforth Hills anticline
 57 Miles City arch
 58 Round Bottom syncline
 59 Ravalli syncline
 60 Spring Creek anticline
 61 Dry Creek anticline
 62 Sumatra anticline
 63 Half Moon anticline
 64 Hines Center anticline
 65 Half Moon fault
 66 Sargent anticline
 67 Cody anticline
 68 Shawnee anticline
 69 Rattlesnake Mountain anticline
 70 South Shoshone anticline
 71 Durbin anticline
 72 White Rock fault
 73 North Creek anticline
 74 Sage Hen anticline
 75 Crooked Stick anticline
 76 North Creek syncline
 77 South Glenrock anticline
 78 Glenrock anticline
 79 Deer Creek syncline
 80 Casper Mountain anticline
 81 Goary anticline
- COLORADO AND UTAH**
- 1 North Flank fault
 2 Ullin Mountains uplift
 3 Wolcott syncline
 4 Henry Fork fault
 5 Ute fault
 6 Clay Basin anticline
 7 Haywood anticline
 8 Huerfano anticline
 9 Shall Creek fault
 10 Basins fault
 11 Powder Wash anticline
 12 Slater dome
 13 King Solomon Creek fault
 14 Boettcher Ridge fault
 15 Hill anticline
 16 Independence Mountain fault
 17 North Middle Mountain fault
 18 Snake Creek syncline
 19 Laramie River syncline
 20 Bull Mountain syncline
 21 Laramie River syncline
 22 Bull Mountain syncline
 23 Shell Creek anticline
 24 Green Ridge fault
 25 Sand Creek-Bowdler Creek anticline
 26 Clark Lake anticline
 27 Wellington anticline
 28 Fort Collins anticline
 29 Black Hollow anticline
 30 Bellevue anticline
 31 Douglas Lake anticline
 32 North Park syncline
 33 South McCullum anticline
 34 Elk Mountain anticline
 35 North McCullum anticline
 36 Colman fault
 37 East Pole Mountain fault
 38 Little Grizzly fault
 39 Delano anticline
 40 Brokenback anticline
 41 Smith Cut anticline
 42 Hyattville anticline
 43 Mercer anticline
 44 Palmer anticline
 45 North Craig anticline
 46 Two Bar anticline
 47 Lookout Mountain arch
 48 Dry Mountain anticline
 49 Island Park syncline
 50 Baker Spring nose
 51 Brush Creek anticline
 52 Davis Spring anticline
 53 Ashley Creek anticline
 54 Naia dome
 55 Cedar Mine syncline
 56 Dry Fork anticline
 57 Deep Creek fault zone
 58 South flank fault
 59 Elk Springs anticline
 60 Kaibaka syncline
 61 Danforth Hills anticline
 62 Miles City arch
 63 Round Bottom syncline
 64 Ravalli syncline
 65 Spring Creek anticline
 66 Dry Creek anticline
 67 Sumatra anticline
 68 Half Moon anticline
 69 Hines Center anticline
 70 Half Moon fault
 71 Sargent anticline
 72 Cody anticline
 73 Shawnee anticline
 74 Rattlesnake Mountain anticline
 75 South Shoshone anticline
 76 Durbin anticline
 77 White Rock fault
 78 North Creek anticline
 79 Sage Hen anticline
 80 Crooked Stick anticline
 81 North Creek syncline
 82 South Glenrock anticline
 83 Glenrock anticline
 84 Deer Creek syncline
 85 Casper Mountain anticline
 86 Goary anticline
- UTAH**
- 127 Minner-Owens Creek fault zone
 128 East Lake Creek fault
 129 Square Creek fault
 130 Wind River Basin
 131 Submontain fault
 132 South Front fault
 133 Break Creek fault
 134 Bruce Creek fault
 135 Coffin Mountain fault
 136 Thermopsis anticline
 137 Waugh anticline
 138 Golden Eagle dome
 139 Basin anticline
 140 Gobo dome
 141 Luerne anticline
 142 Red Spring anticline
 143 West dome
 144 Sand Fork anticline
 145 Wildhorse Butte anticline
 146 East dome
 147 Zimmerman Butte anticline
 148 Sheep dome
 149 South Fork syncline
 150 Sand Fork anticline
 151 Sand Creek anticline
 152 Lake Creek anticline
 153 Kirby Creek anticline
 154 Black Mountain anticline
 155 Lyville Mountain anticline
 156 Bridger syncline
 157 McComb anticline
 158 Poison Creek anticline
 159 Cedar Ridge fault
 160 Redwater anticline
 161 Orchard anticline
 162 Orchard anticline
 163 Chabot anticline
 164 Mahogany Butte anticline
 165 North Hill anticline
 166 Teton syncline
 167 Teton syncline
 168 Teton syncline
 169 Teton syncline
 170 Teton syncline
 171 Teton syncline
 172 Teton syncline
 173 Teton syncline
 174 Teton syncline
 175 Teton syncline
 176 Teton syncline
 177 Teton syncline
 178 Teton syncline
 179 Teton syncline
 180 Teton syncline
 181 Teton syncline
 182 Teton syncline
 183 Teton syncline
 184 Teton syncline
 185 Teton syncline
 186 Teton syncline
 187 Teton syncline
 188 Teton syncline
 189 Teton syncline
 190 Teton syncline
 191 Teton syncline
 192 Teton syncline
 193 Teton syncline
 194 Teton syncline
 195 Teton syncline
 196 Teton syncline
 197 Teton syncline
 198 Teton syncline
 199 Teton syncline
 200 Teton syncline
 201 Teton syncline
 202 Teton syncline
 203 Teton syncline
 204 Teton syncline
 205 Teton syncline
 206 Teton syncline
 207 Teton syncline
 208 Teton syncline
 209 Teton syncline
 210 Teton syncline
 211 Teton syncline
 212 Teton syncline
 213 Teton syncline
 214 Teton syncline
 215 Teton syncline
 216 Teton syncline
 217 Teton syncline
 218 Teton syncline
 219 Teton syncline
 220 Teton syncline
 221 Teton syncline
 222 Teton syncline
 223 Teton syncline
 224 Teton syncline
 225 Teton syncline
 226 Teton syncline
 227 Teton syncline
 228 Teton syncline
 229 Teton syncline
 230 Teton syncline
 231 Teton syncline
 232 Teton syncline
 233 Teton syncline
 234 Teton syncline
 235 Teton syncline
 236 Teton syncline
 237 Teton syncline
 238 Teton syncline
 239 Teton syncline
 240 Teton syncline
 241 Teton syncline
 242 Teton syncline
 243 Teton syncline
 244 Teton syncline
 245 Teton syncline
 246 Teton syncline
 247 Teton syncline
 248 Teton syncline
 249 Teton syncline
 250 Teton syncline
 251 Teton syncline
 252 Teton syncline



Base prepared from U. S. Geological Survey maps 1:1,000,000, revised in part

TECTONIC MAP OF THE CENTRAL CORDILLERAN FORELAND SHOWING THE DISTRIBUTION OF URANIUM DEPOSITS

Geology compiled by Frank W. Osterwald and Basil G. Dean, 1954-56

