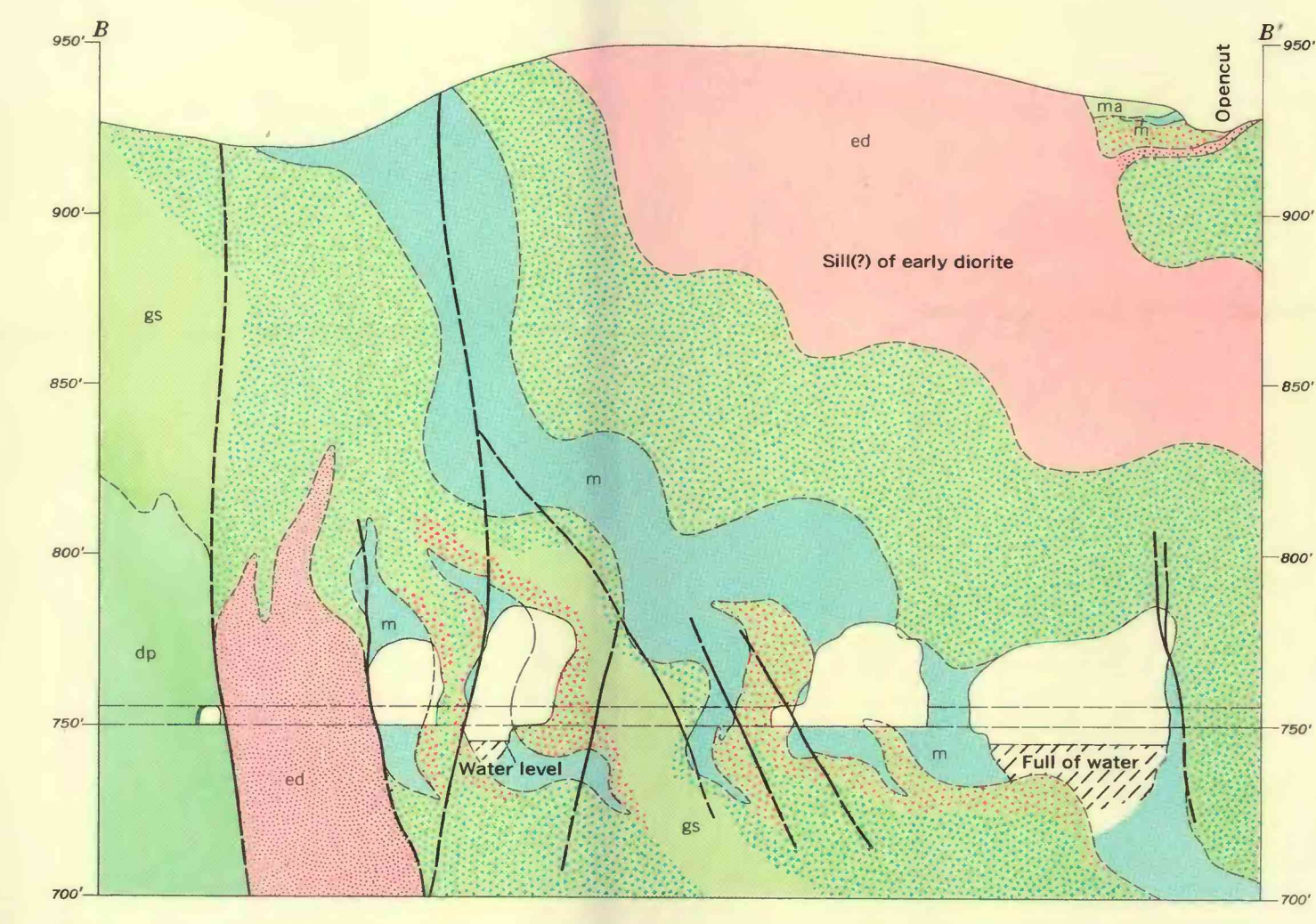
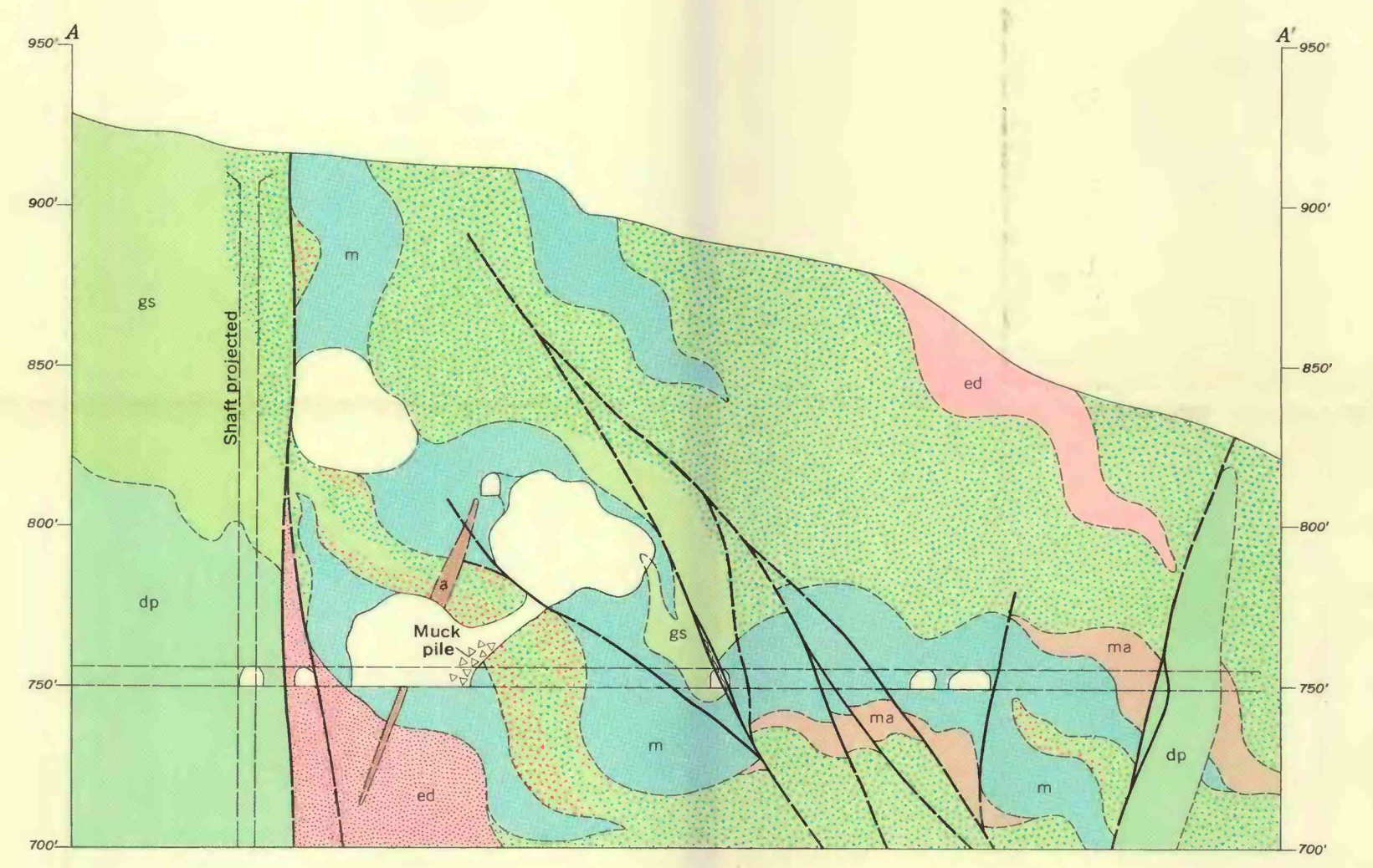


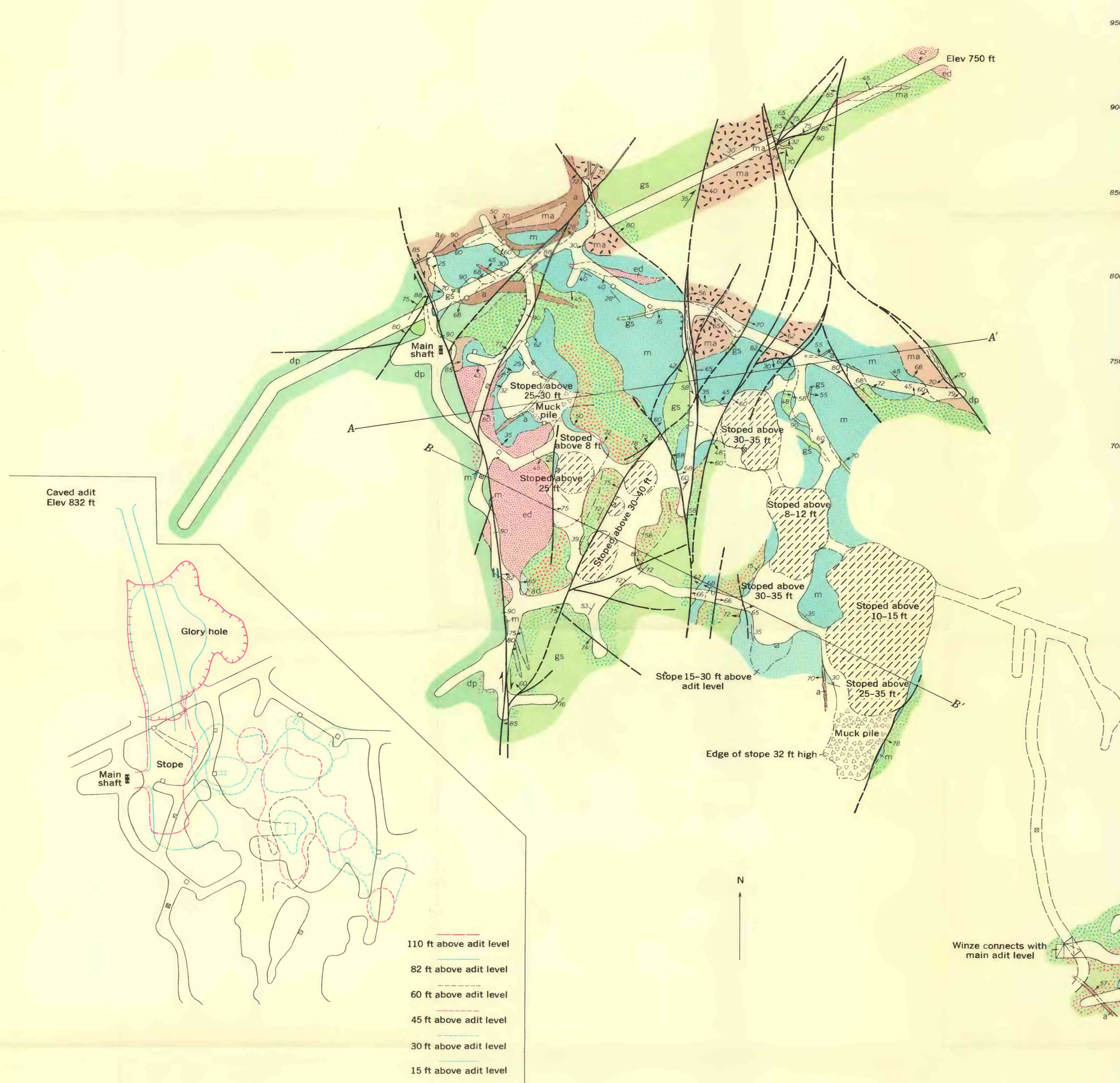
EXPLANATION

- | | | | |
|--|--|--|---|
| | Alkalic dacite | | Marble |
| | Diorite porphyry
<i>Includes some early diorite</i> | | Tactite
<i>Greenstone, altered to epidote, and other silicates</i> |
| | Andesite | | Tactite
<i>Containing chalcopyrite and pyrite</i> |
| | Early diorite and related rocks
<i>Dots indicate epidote alteration</i> | | Magnetite ore |
| | Greenstone and associated rocks | | |

- Contact, showing dip
Dashed where approximately located; short dashes where inferred
- Vertical contact
- Fault, showing dip
Dashed where approximately located. Arrow indicates relative movement of downthrown block
- Vertical fault
- Fault, showing relative movement
- Shear zone, showing dip
- Strike and dip of beds
- Portal of adit
- Foot of raise or winze
- Head of raise or winze
- Ore chute
- Stope
- Stopped below level of adit; filled with water
- Stopped above level of adit; and beyond boundary of adit
- Mine working
- Lagging or cribbing along drift
- Caved or otherwise inaccessible working

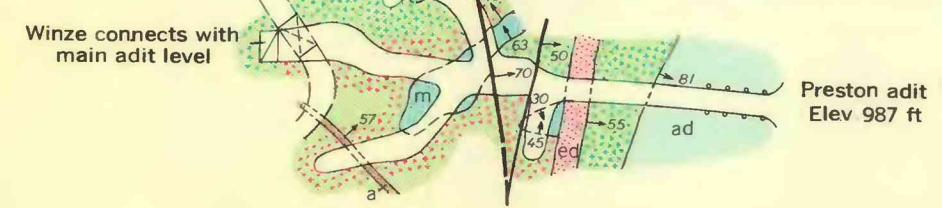


Geology by E. N. Goddard, 1942



- 110 ft above adit level
- 82 ft above adit level
- 60 ft above adit level
- 45 ft above adit level
- 30 ft above adit level
- 15 ft above adit level

MAP SHOWING UPPER STOPES THAT DO NOT APPEAR ON MAIN ADIT LEVEL



GEOLOGIC MAP AND SECTIONS OF MAMIE MINE

