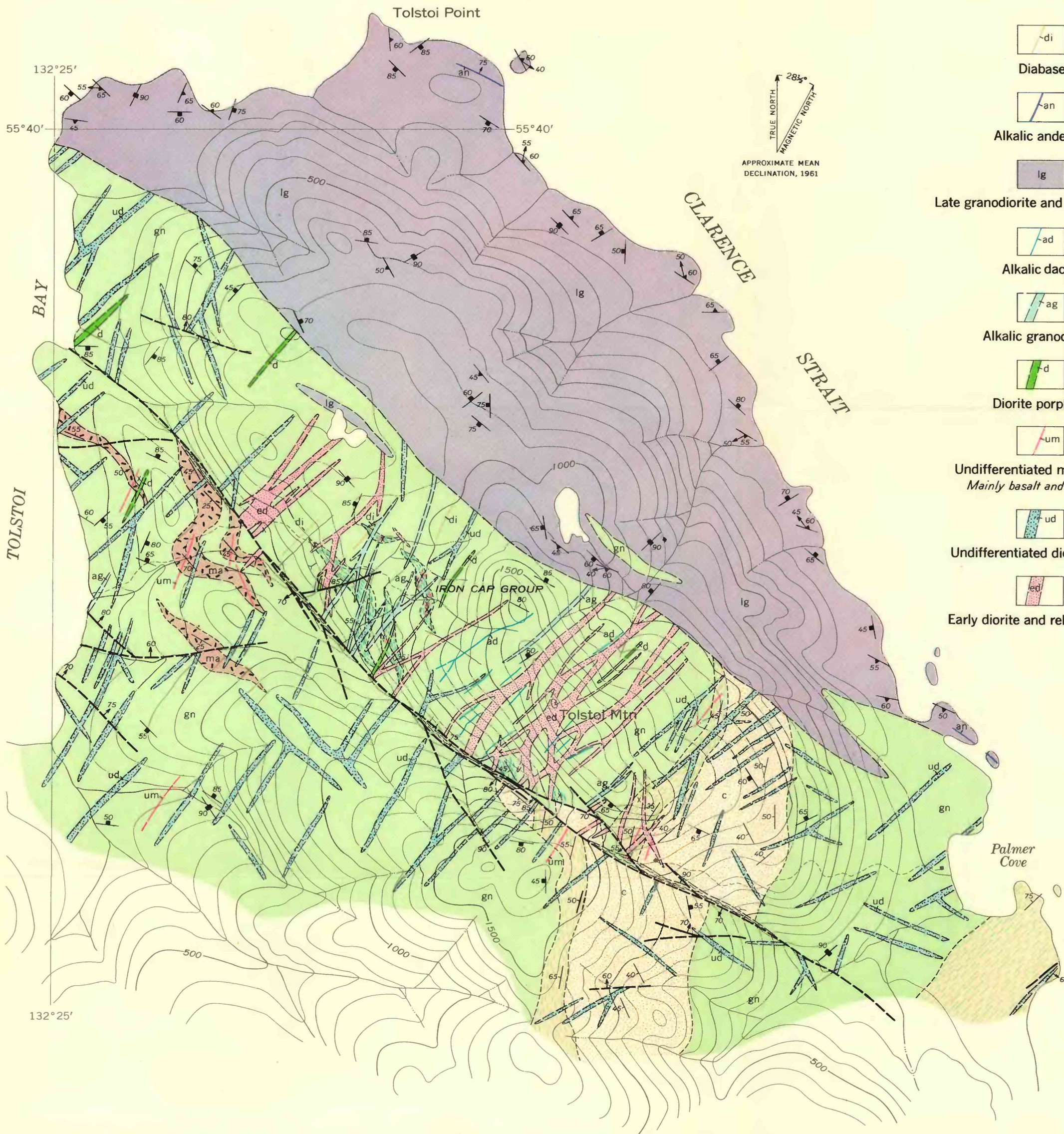


EXPLANATION



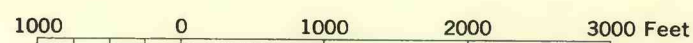
- | | | | |
|--|---|--|--|
| | Diabase | | Greenstone |
| | Alkalic andesite | | Greenstone with lenses of calcareous clastic material |
| | Late granodiorite and related rocks | | Marble |
| | Alkalic dacite | | Calcareous siltstone and sandstone
<i>Mostly fine grained and thin bedded</i> |
| | Alkalic granodiorite | | Conglomerate |
| | Diorite porphyry | | Ore
<i>Mainly magnetite; sulfide minerals locally predominant</i> |
| | Undifferentiated mafic dikes
<i>Mainly basalt and andesite</i> | | Contact, showing dip
<i>Dashed where approximately located; short dashes where inferred</i> |
| | Undifferentiated dioritic rocks | | Fault, showing dip
<i>Dashed where approximately located</i> |
| | Early diorite and related rocks | | Vertical fault |
| | | | Shear zone, showing dip |
| | | | Strike and dip of bedding in layered rocks |
| | | | Strike and dip of flow planes and plunge of flow lines in intrusive |
| | | | Strike and dip of joints |
| | | | Strike of vertical joints |
| | | | Pit, trench, or open cut |
| | | | Portal of adit |

Topography modified from plate 13, U. S. Geol. Survey
Prof. Paper 87, 1915

INTERIOR—GEOLOGICAL SURVEY, WASHINGTON, D. C. MR-3317

Geology by L. A. Warner, Karl Stefansson
and D. H. Pfeiffer, 1944

GEOLOGIC MAP OF TOLSTOI MOUNTAIN AREA



Contour interval 100 feet
Datum is approximate mean sea level