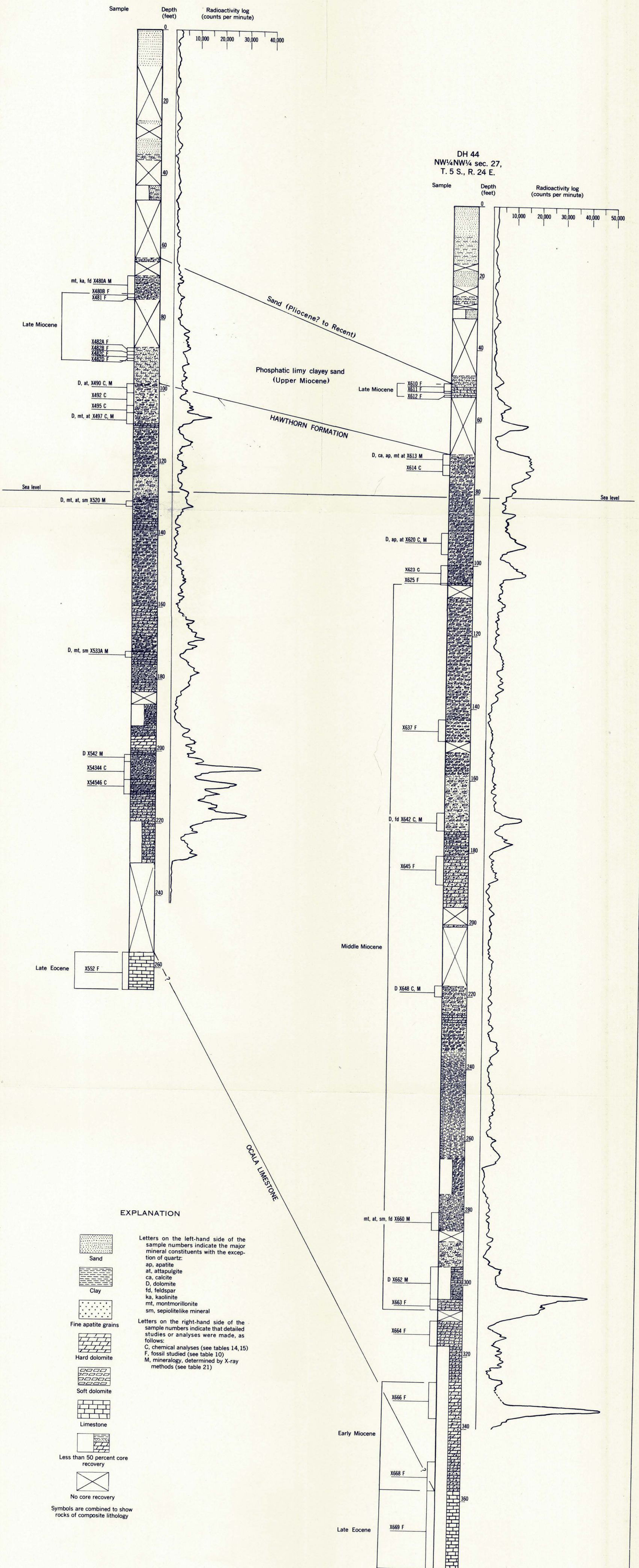


DH 42  
NE $\frac{1}{4}$ NE $\frac{1}{4}$  sec. 17,  
T. 9 S., R. 25 E.

DH 44  
NW $\frac{1}{4}$ NW $\frac{1}{4}$  sec. 27,  
T. 5 S., R. 24 E.



GRAPHIC LOGS OF CORES FROM DRILL HOLES 42 AND 44  
NORTHERN PENINSULAR FLORIDA

Lithology (see also table 11) and radioactivity logs by  
Gilbert H. Espenshade and Charles W. Spencer, 1956