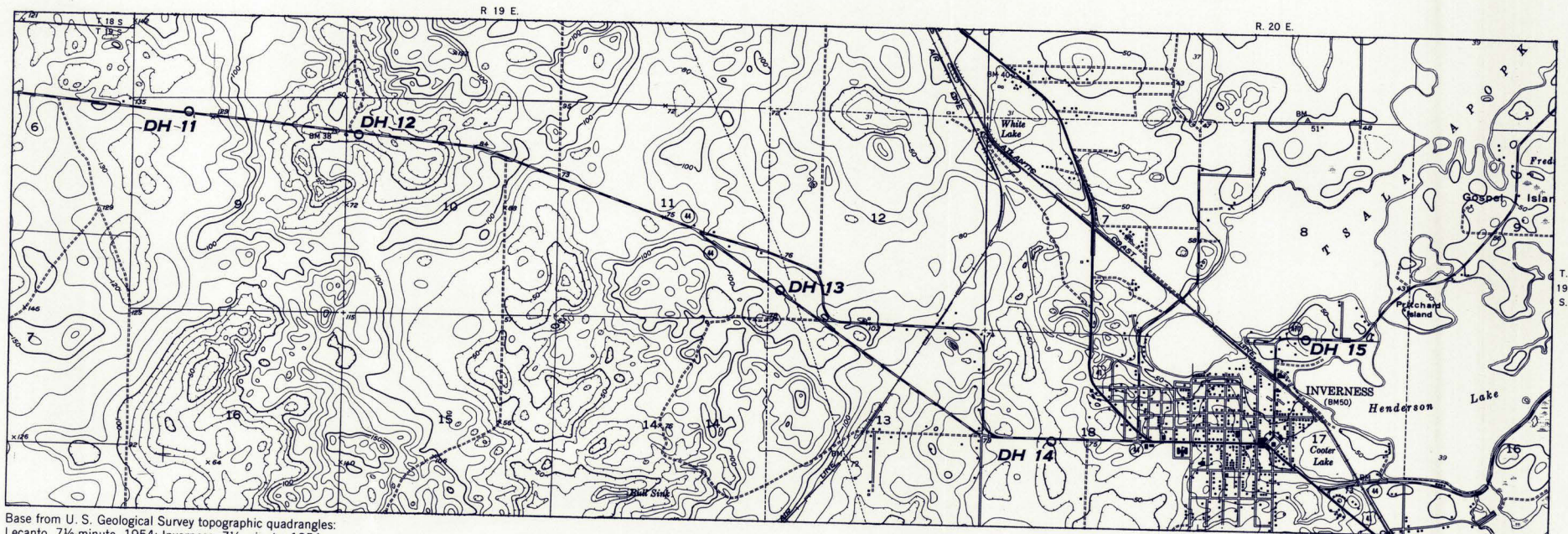


Lithologic and radioactivity logs by Gilbert H. Espenshade and L. Allen Brubaker, 1955



Base from U. S. Geological Survey topographic quadrangles: Lecanto, 7½-minute, 1954; Inverness, 7½-minute, 1954

INTERIOR—GEOLOGICAL SURVEY, WASHINGTON, D. C.—10320

**GRAPHIC LOGS OF CUTTINGS FROM AUGER-DRILL HOLES 11 TO 15  
NORTHERN PENINSULAR FLORIDA**

