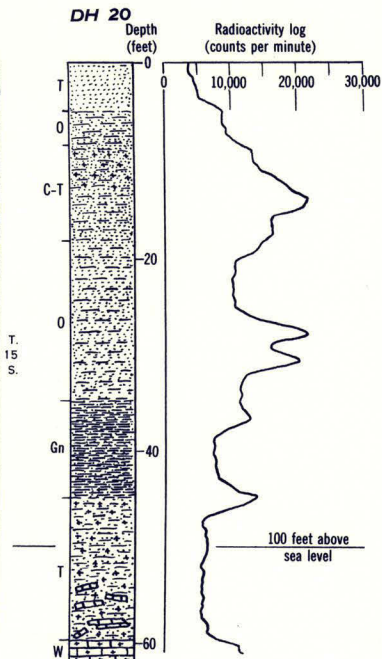


Base from U. S. Geological Survey topographic
quadrangle: Romeo, 7½-minute, 1954



EXPLANATION



Sand



Clay



Fine phosphate grains



Limestone



Slumped(?) fragments

Symbols are combined to show
composite lithology

C, cream

T, tan

Gn, green

W, white

O, orange

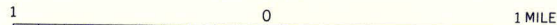
Letter symbols indicate color
Variation in color shown by dash, as
C-T (cream to tan)

Lithologic and radioactivity logs by Gilbert H. Espenshade
and L. Allen Brubaker, 1955

INTERIOR—GEOLOGICAL SURVEY, WASHINGTON, D. C.—10320

GRAPHIC LOGS OF CUTTINGS FROM AUGER-DRILL HOLE 20
NORTHERN PENINSULAR FLORIDA

SCALE 1:48 000



CONTOUR INTERVAL 10 FEET
DATUM IS MEAN SEA LEVEL