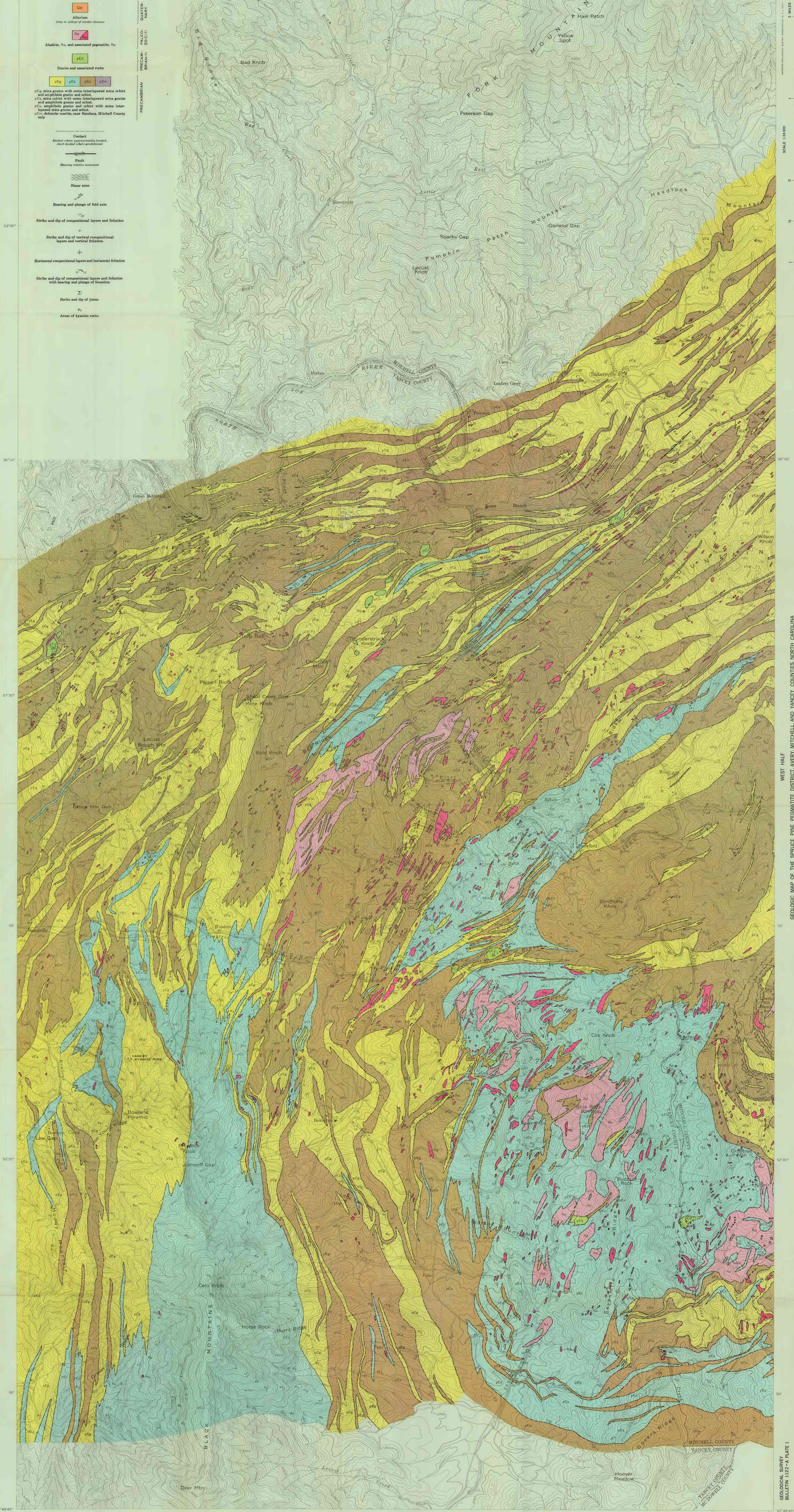


EXPLANATION

- Qal
Alluvium
Only in outline of master streams
 - Pn
Alaskite, Pn, and associated pegmatite, Pp
 - pCt
Dunite and associated rocks
 - pCa
 pCb
 pCc
 pCd
pCa, mica gneiss with some interlayered mica schist and amphibole gneiss and schist
pCb, mica schist with some interlayered mica gneiss and amphibole gneiss and schist
pCc, amphibole gneiss and schist with some interlayered mica gneiss and schist
pCd, chlorite marbles near Hundana, Mitchell County only
-
- Contact
Dashed where approximately located, short dashed where gradational
 - Fault
Showing relative movement
 - Shear zone
 - Bearing and plunge of fold axis
 - Strike and dip of compositional layers and foliation
 - Strike and dip of vertical compositional layers and vertical foliation
 - Horizontal compositional layers and horizontal foliation
 - Strike and dip of compositional layers and foliation with bearing and plunge of lineation
 - Strike and dip of joints
 - Areas of kyanitic rocks

QUATERNARY
PALEOZOIC
BRIANT
PRECAMBRIAN



WEST HALF
GEOLOGIC MAP OF THE SPRUCE PINE PEGMATITE DISTRICT, AVERY, MITCHELL, AND YANCEY COUNTIES, NORTH CAROLINA

Base by Topographic Division
U. S. Geological Survey