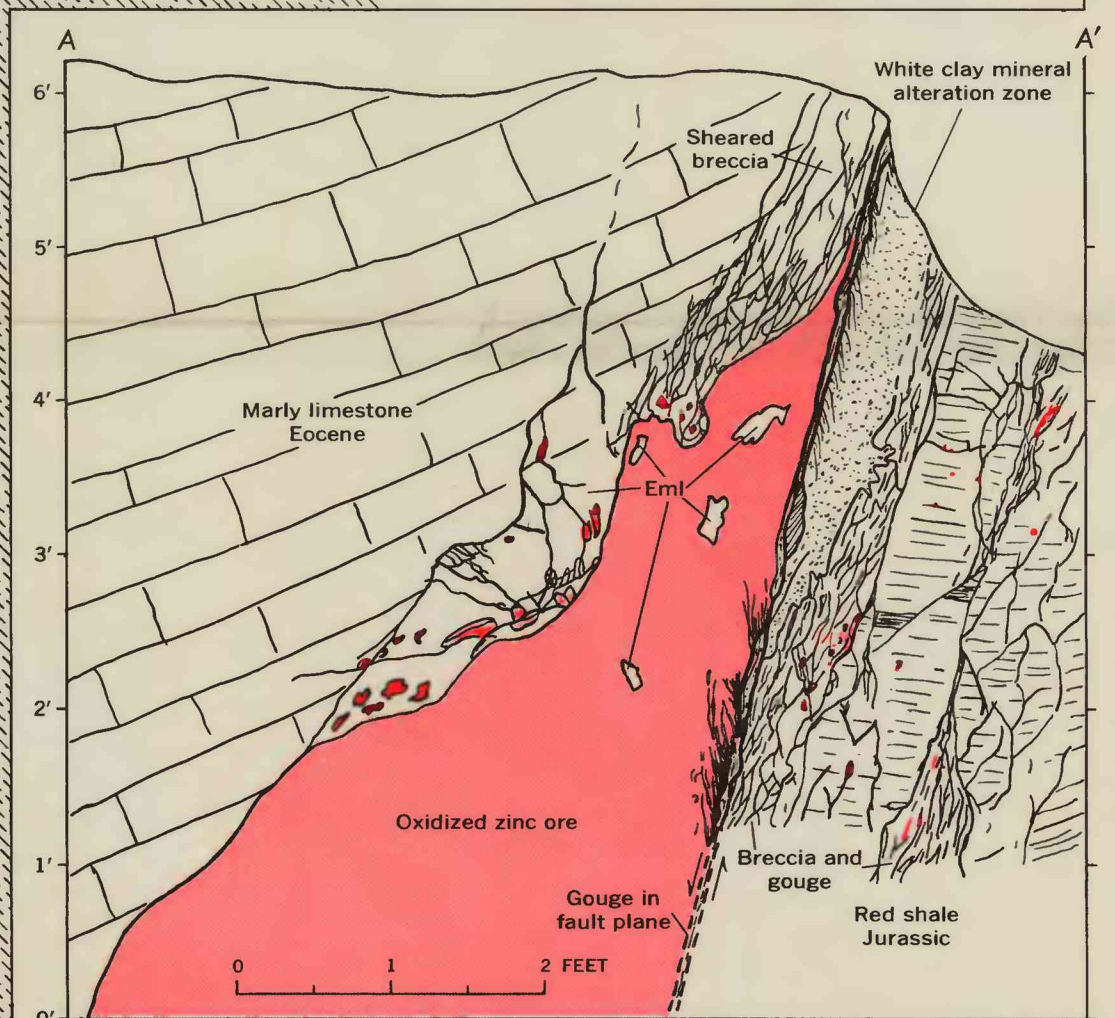
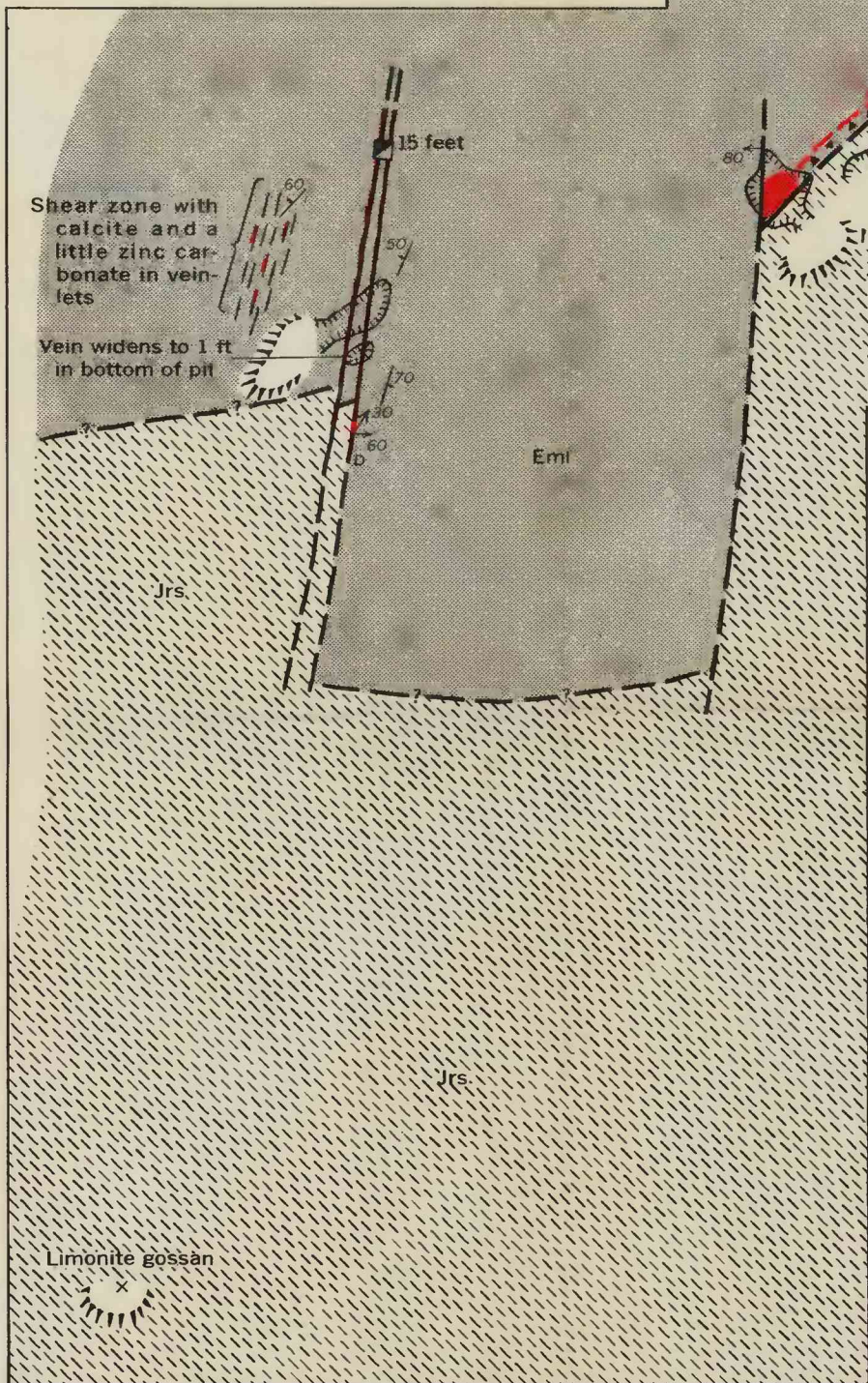
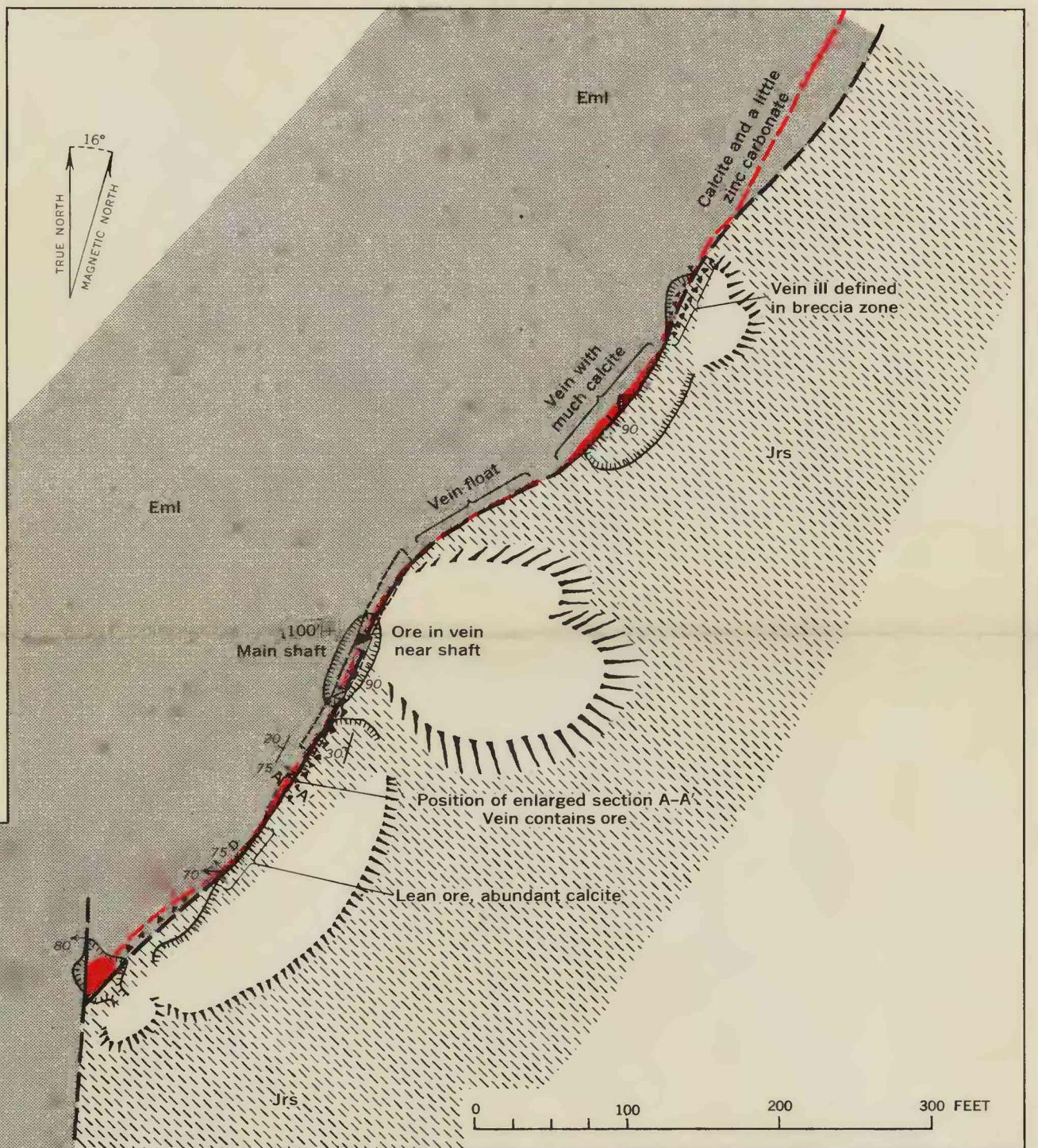
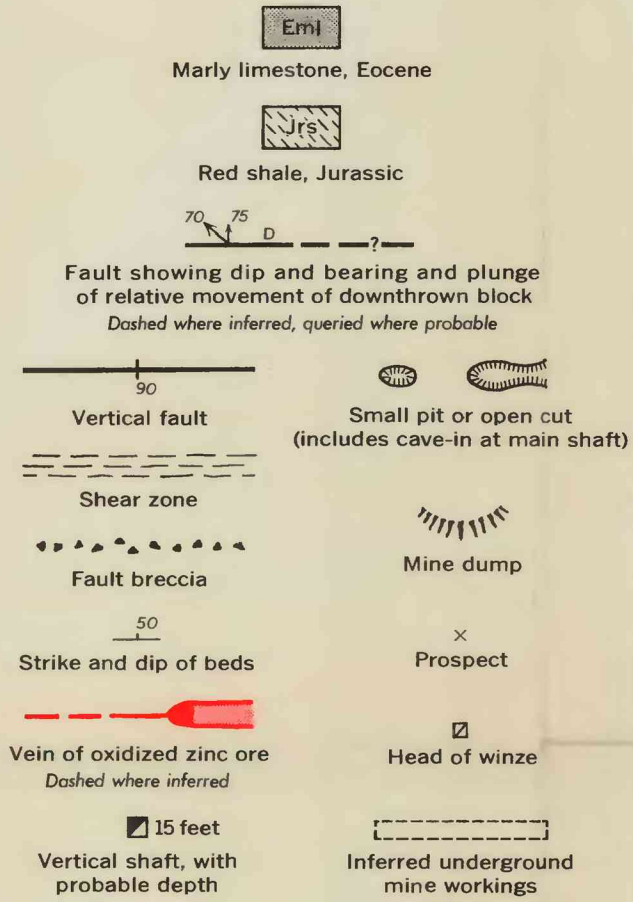


EXPLANATION



INTERIOR—GEOLOGICAL SURVEY, WASHINGTON, D. C.—61104

Base and geology by A. V. Heyl and Priestly Toulmin, 3rd, 1954

GEOLOGIC MAP AND SECTION OF THE REDMOND SILVER MINE, REDMOND, UTAH, SHOWING THE OXIDIZED ZINC ORE VEINS