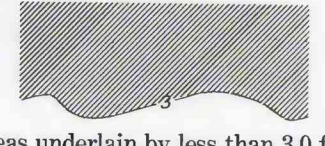
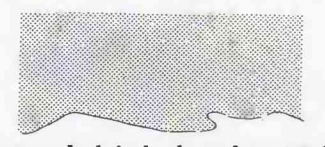
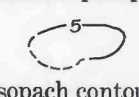
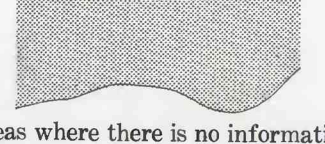


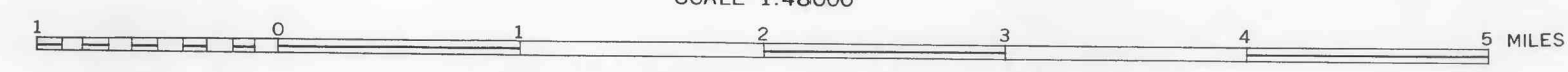
- EXPLANATION**
-  Areas underlain by less than 3.0 feet of the aluminum phosphate zone
  -  Areas underlain by less than 1.0 foot of the aluminum phosphate zone
  -  Isopach contour  
Dashed where inferred. Contour interval 5 feet
  -  Areas where there is no information

Base by Topographic Division  
U. S. Geological Survey



### ISOPACH MAP OF THE ALUMINUM PHOSPHATE ZONE PLANT CITY QUADRANGLE, FLORIDA

SCALE 1:48000



Compiled by J. B. Cathcart and L. J. McGreevy from  
gamma logs and chemical analyses by the U. S. Geo-  
logical Survey. Drilling by the American Cyanamid Co.,  
Coronet Phosphate Co., Davison Chemical Co., Swift &  
Co., and the U. S. Geological Survey

INTERIOR—GEOLOGICAL SURVEY, WASHINGTON, D. C.—61321