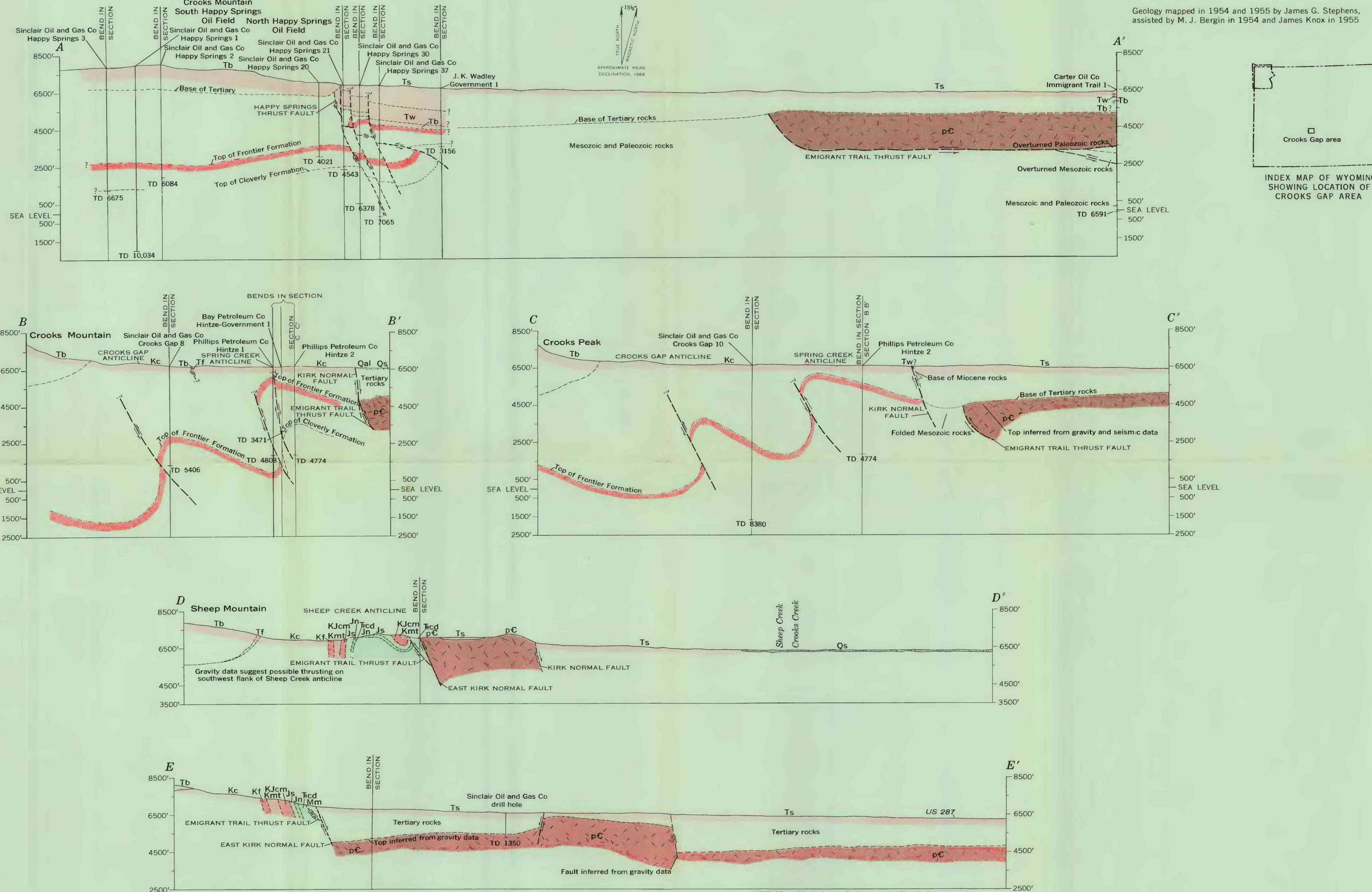
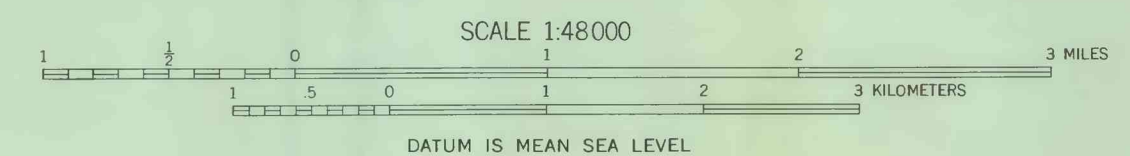


Base from U.S. Geological Survey topographic quadrangles; base for southern third compiled from township plats surveyed in 1882

Geology mapped in 1954 and 1955 by James G. Stephens, assisted by M. J. Bergin in 1954 and James Knox in 1955



**GEOLOGIC MAP OF THE CROOKS GAP AREA, FREMONT COUNTY, WYOMING**



INTERIOR—GEOLOGICAL SURVEY, WASHINGTON, D. C.—G-3088