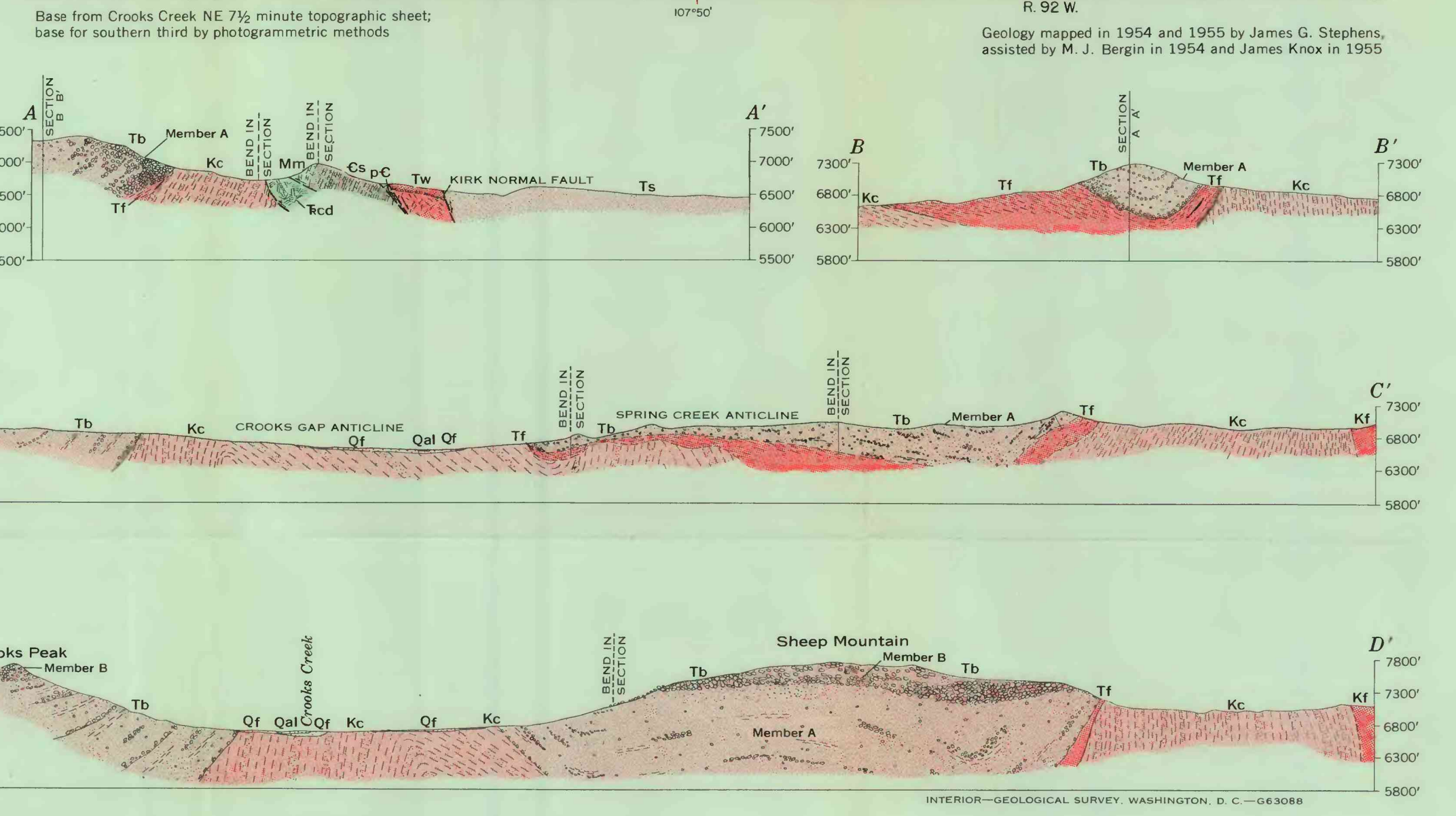
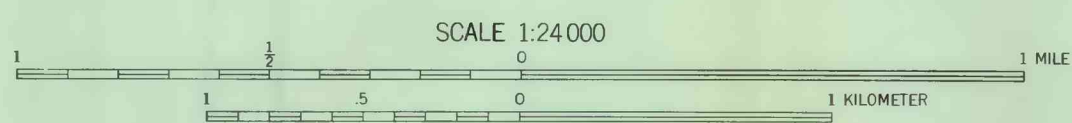


EXPLANATION	
Alluvium	Alluvial-fan deposits
Windblown sand	
QUATERNARY	
Split Rock Formation	
MIOCENE	
White River Formation	
OLIGOCENE	
Battle Spring Formation	
Eocene	
Fort Union Formation	
Paleocene	
Cody Shale	
Frontier Formation	
Upper Cretaceous	
Chugwater and Dinwoody Formations	
Madison Limestone	
Sedimentary rocks	
Granite	
CRETACEOUS	
MISSISSIPPIAN	
CAMBRIAN	
PRECAMBRIAN	

- Contact
- Normal fault
- High-angle reverse fault, showing dip
- Tear fault, showing relative movement
- Anticline, showing direction of plunge
- Syncline, showing direction of plunge
- Strike and dip of beds
- Strike and dip of overturned beds
- Strike of vertical beds
- Apparent dip
- Oil well
- Depleted oil well
- Selected dry hole
- Core hole
- Oil storage tanks
- Uranium mine
- Uranium prospect
- Line of measured section



GEOLOGIC MAP OF THE URANIUM-PRODUCING AREA AT CROOKS GAP



CONTOUR INTERVAL 50 FEET
DATUM IS MEAN SEA LEVEL

