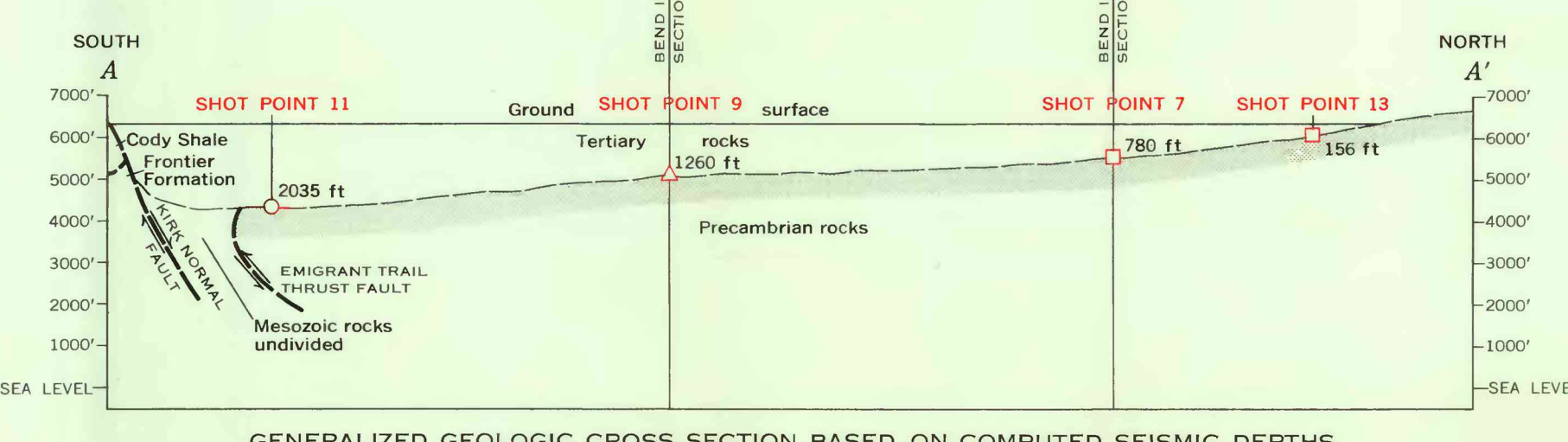
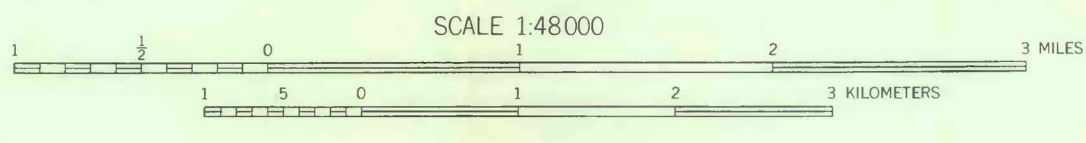


- EXPLANATION**
- pC Outcrop of Precambrian rocks
 - 200.8 Gravity station
200.8, gravity value, in milligals
3, station number
 - B-1 Gravity base station
 - Sp-11 Seismic shot point
 - Gravity contours
Interval, 1 milligal
 - Normal fault
Dashed where approximately located, dotted where concealed or inferred. U, upthrown side; D, downthrown side
 - High-angle reverse fault
Dashed where approximately located, dotted where concealed or inferred. South teeth on upper plate
 - Fault inferred from gravity data
Bar and ball on downthrown side
 - Anticline, showing plunge of axis
Dashed where approximately located, dotted where concealed
 - Syncline, showing plunge of axis
Dashed where approximately located, dotted where concealed
- EXPLANATION FOR CROSS SECTION**
- 156 ft Seismic refraction depth
 - 2035 ft Seismic refraction depth
 - 2650 ft Seismic refraction depth
 - Combination refraction-refraction depth



GENERALIZED GEOLOGIC CROSS SECTION BASED ON COMPUTED SEISMIC DEPTHS

COMPLETE BOUGUER ANOMALY MAP OF CROOKS GAP AND PART OF THE GREAT DIVIDE BASIN, FREMONT COUNTY, WYO.



Base north of 42°22'30" taken from U.S. Geological Survey
topographic sheets; base south of 42°22'30" taken from
township plats surveyed in 1882

INTERIOR—GEOLOGICAL SURVEY, WASHINGTON, D. C.—63308
Precambrian areas north of 42°30' from aerial photographs
Gravity survey in 1955 and 1956 by Don L. Healey
Seismic investigation by John C. Roller and Robert
M. Hazlewood