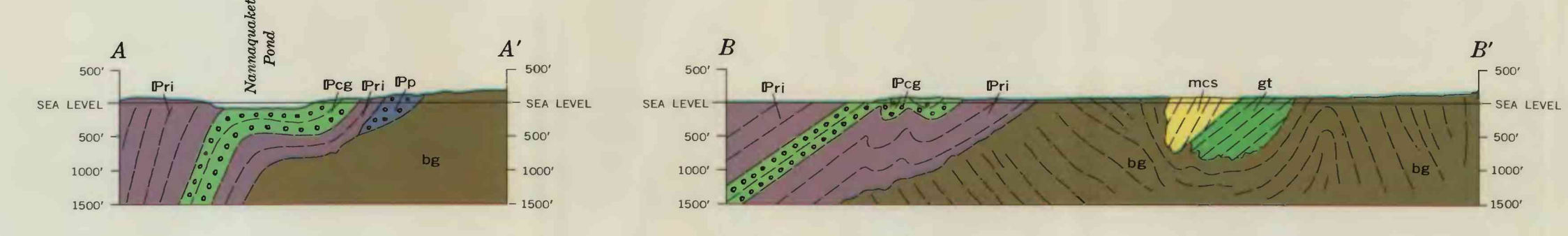


Base by U.S. Geological Survey, 1949

INTERIOR—GEOLOGICAL SURVEY, WASHINGTON, D. C.—1964—G-53290
Geology by Samuel J. Pollock, 1955



BEDROCK GEOLOGIC MAP AND SECTIONS OF THE TIVERTON QUADRANGLE, RHODE ISLAND—MASSACHUSETTS

