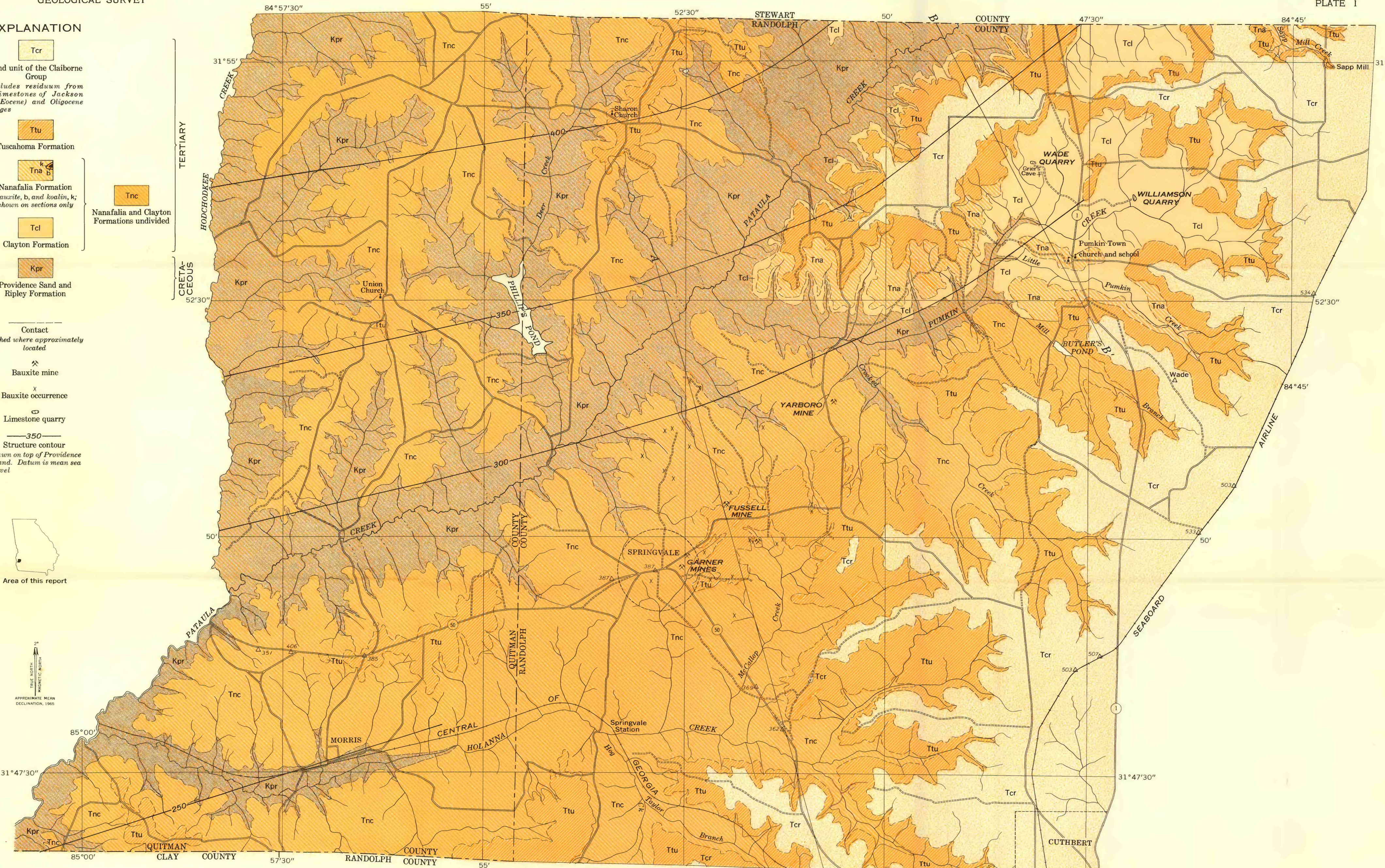
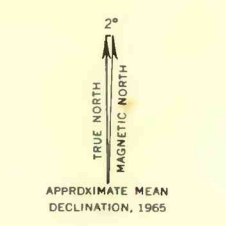


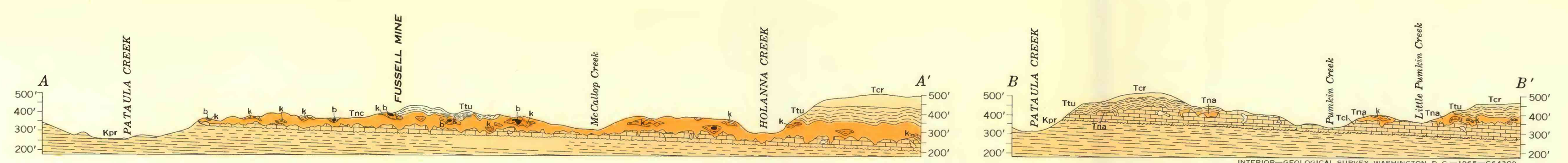
EXPLANATION

- Upper Cretaceous**
 - Midway group
 - Kpr** Providence Sand and Ripley Formation
 - Patience group
 - Tcl** Clayton Formation
 - Wilcox group
 - Tna** Nanafalia Formation
Bauxite, b, and kaolin, k; shown on sections only
 - Ttu** Tusahoma Formation
 - Tertiary**
 - Tnc** Nanafalia and Clayton Formations undivided
 - Other**
 - Tr** Sand unit of the Claiborne Group
Includes residuum from limestones of Jackson (Eocene) and Oligocene ages
- Contact
- - - Dashed where approximately located
- ⋈ Bauxite mine
 - x Bauxite occurrence
 - Limestone quarry
 - 350— Structure contour
Drawn on top of Providence Sand. Datum is mean sea level



Base compiled from aerial photographs

Geology by Lorin D. Clark, September, 1943



INTERIOR—GEOLOGICAL SURVEY, WASHINGTON, D. C.—1965—G64309

GEOLOGIC MAP AND STRUCTURE SECTIONS OF THE SPRINGVALE BAUXITE DISTRICT, GEORGIA

SCALE 1:48 000

