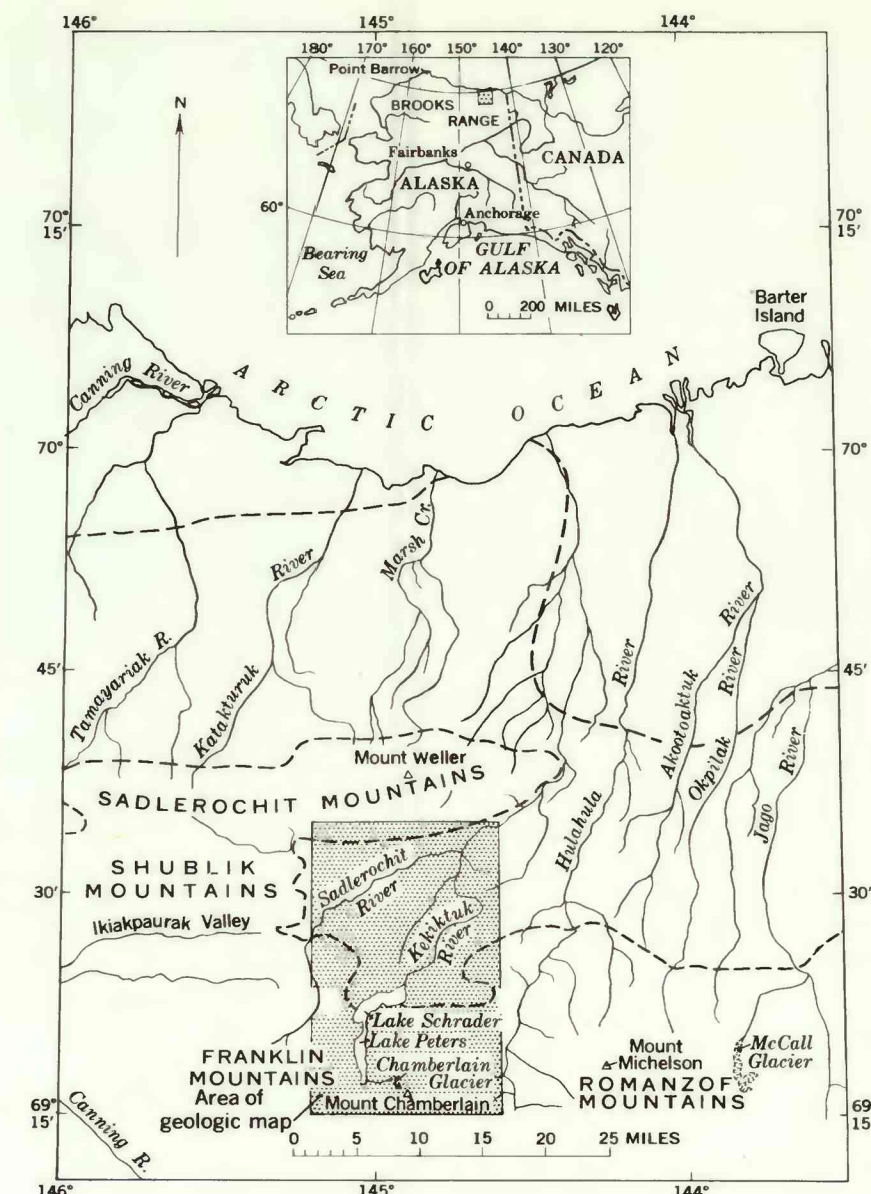
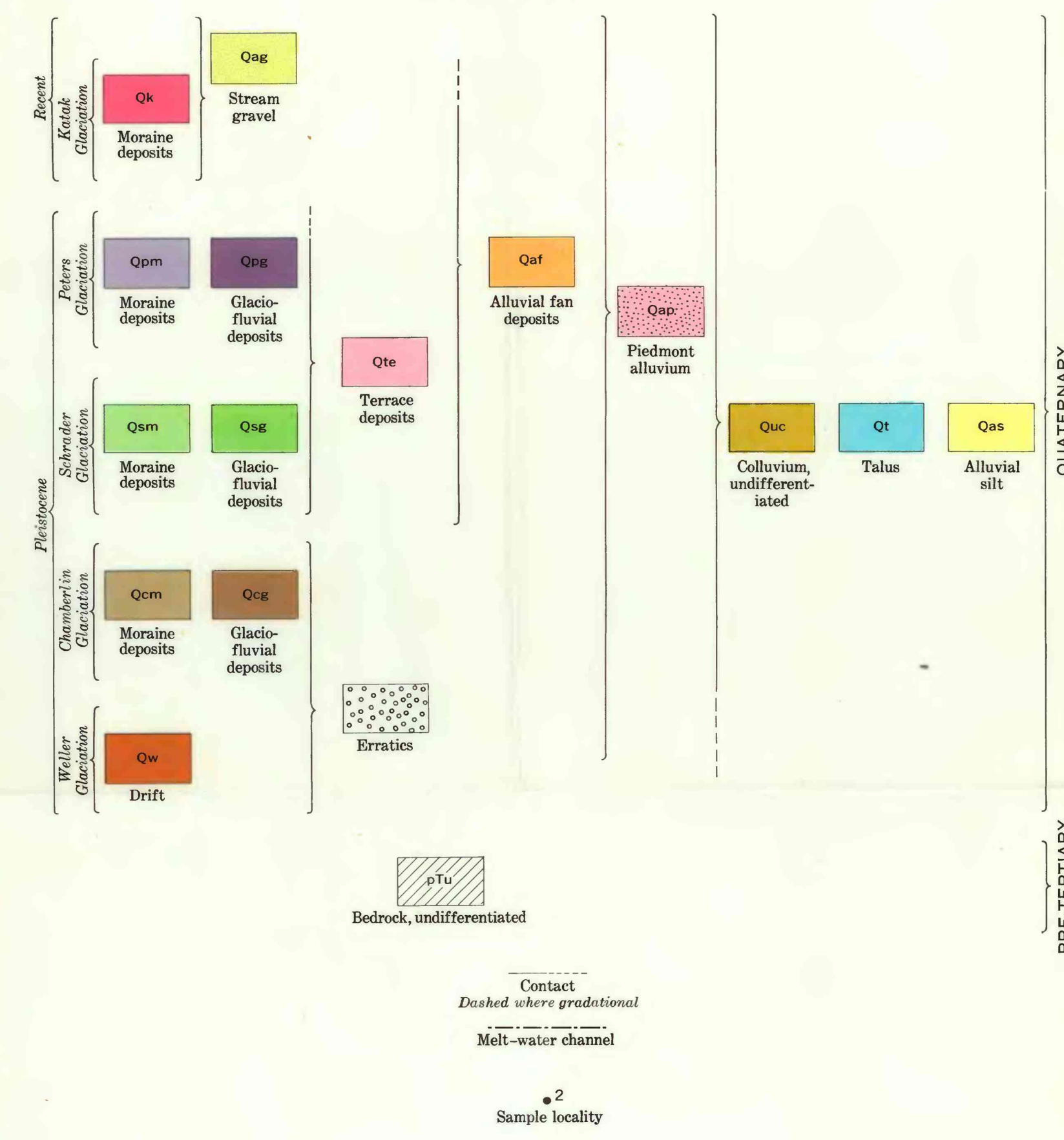


EXPLANATION



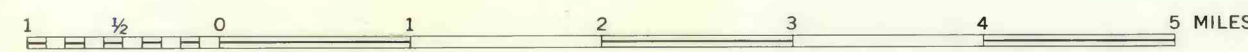
LOCATION DIAGRAM AND INDEX MAP

Base maps from U.S. Geological Survey Mount Michelson B-2 (unpublished) and part of U.S. Army Map Service Mount Michelson C-2 (unpublished) quadrangles, Alaska

Geology mapped by G. William Holmes, assisted by John E. Hobbie and Fernand de Percin, 1958 and 1959, and by Charles R. Lewis, assisted by Livingston Chase, 1959

MAP OF QUATERNARY GEOLOGY OF THE MOUNT CHAMBERLIN AREA, BROOKS RANGE, ALASKA

SCALE 1:63 360



CONTOUR INTERVAL SOUTH OF LAT. 69°30'N 100 FEET; NORTH OF LAT. 69°30'N 50 FEET
DATUM IS MEAN SEA LEVEL