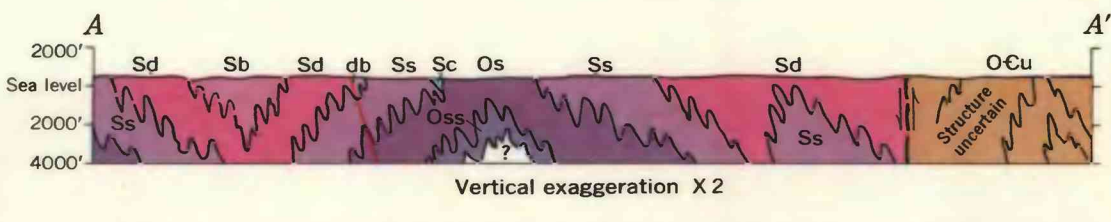


Base from Army Map Service 1:250,000 series quadrangles: Millinocket, 1954, and Fredericton, 1963

INTERIOR—GEOLOGICAL SURVEY, WASHINGTON, D. C.—1965—G-6510

Geology mapped in 1956 and 1957 by D. M. Larrabee and C. W. Spencer; in 1958 and 1959 by D. M. Larrabee assisted by D. J. P. Swift; in 1961 by D. M. Larrabee; and in 1962 by D. M. Larrabee assisted by S. S. Svenson



BEDROCK GEOLOGIC MAP OF THE GRAND LAKE AREA, MAINE

