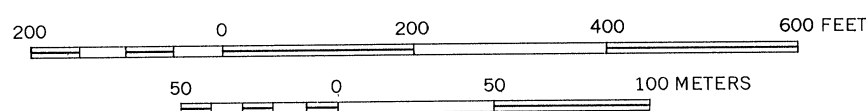
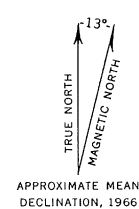


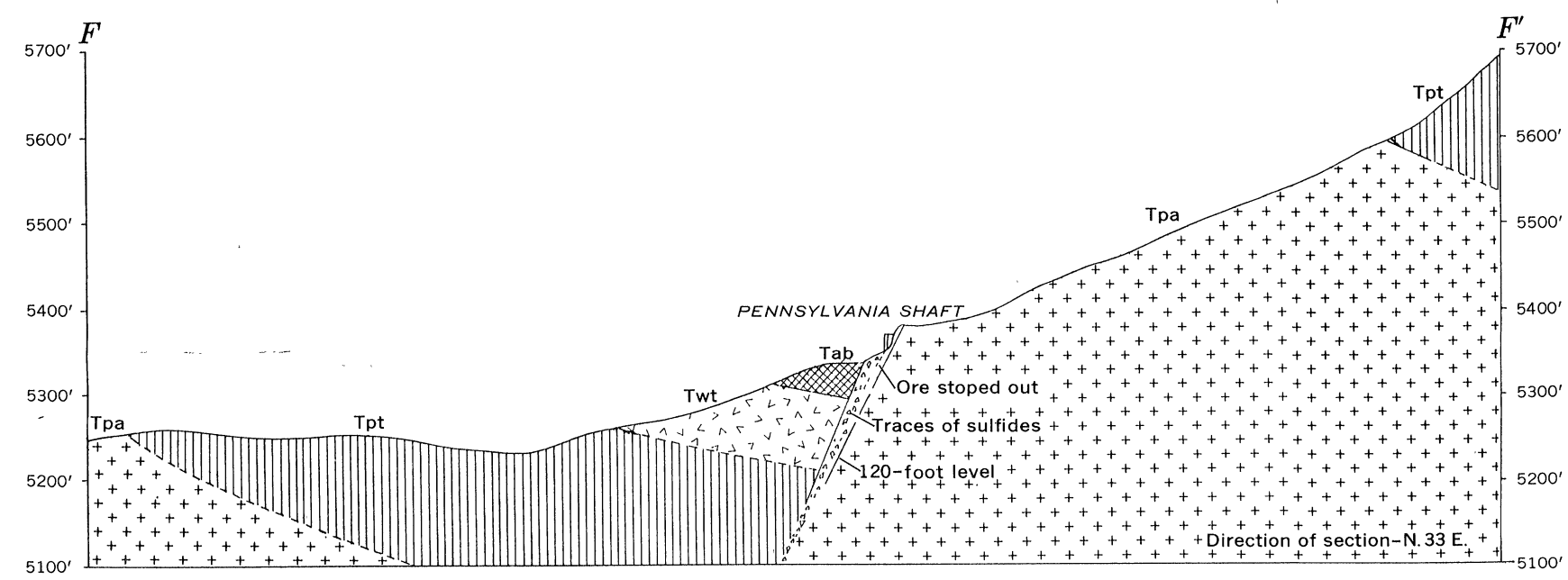
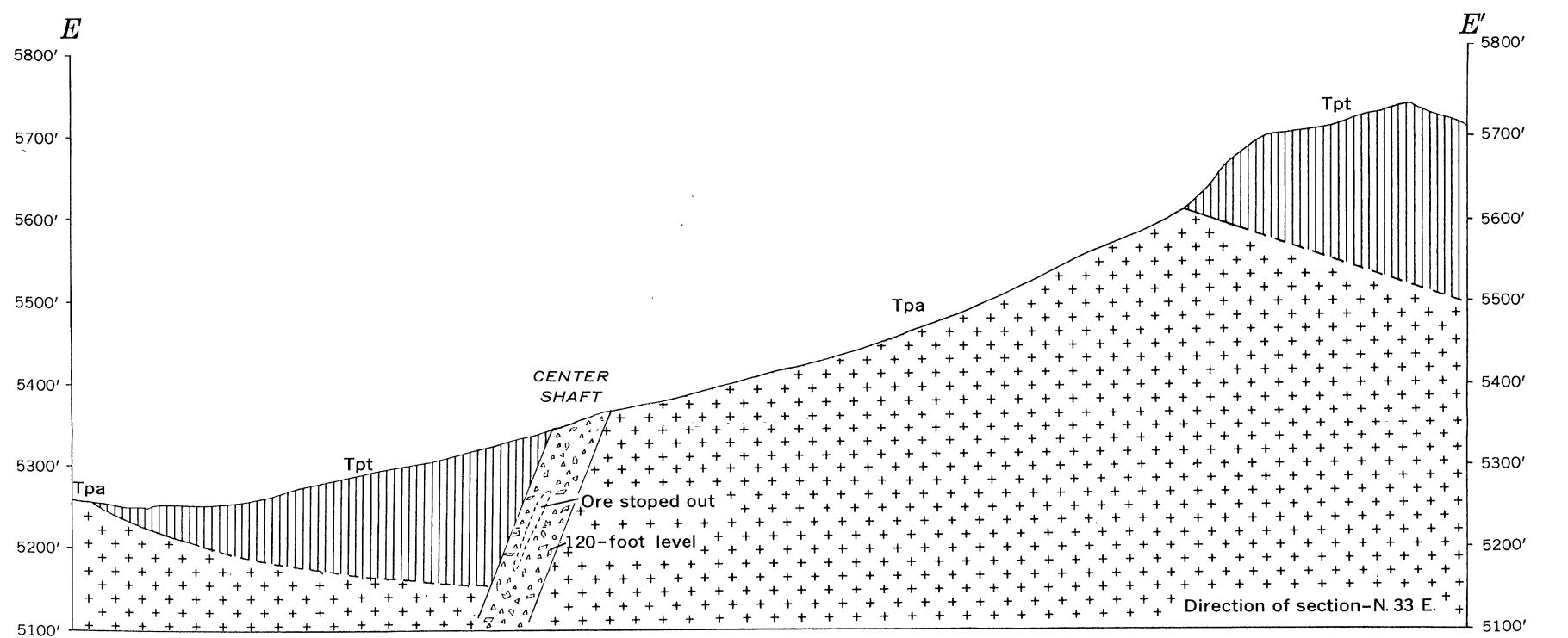
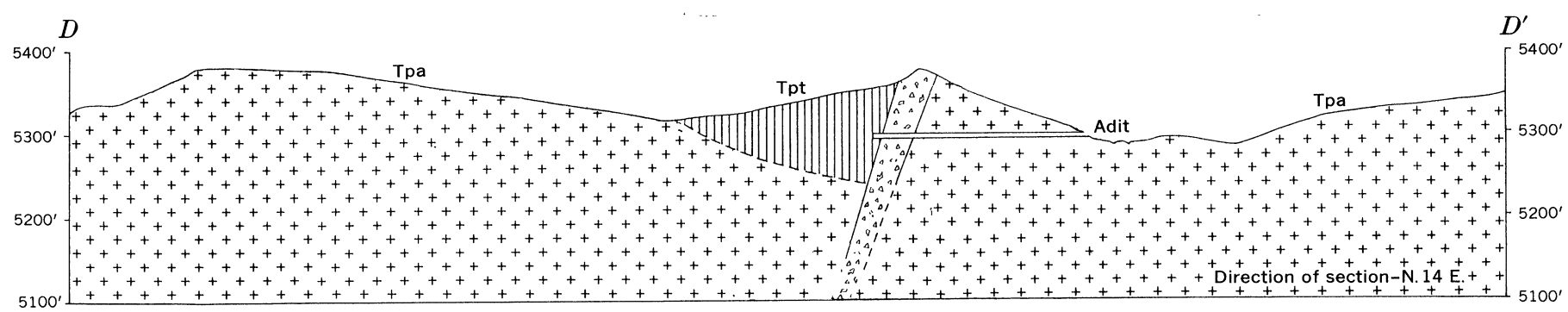
Geology and topography by R. L. Griggs
and H. C. Wagner, 1943

Note: Sections A-A', B-B', and C-C' are shown on the geologic map and sections of the Carlisle Mine



EXPLANATION

- | | | |
|---|-----------------|--|
| <ul style="list-style-type: none"> Amygdaloidal andesitic basalt Welded tuff Purple tuff Purple andesite porphyry Carlisle fault zone | <p>TERTIARY</p> | <p>Contact
<i>Dashed where approximately located</i></p> <p>Fault, showing dip
<i>Dashed where approximately located.</i>
U, upthrown side; D, downthrown side</p> <p>Strike and dip of flows</p> <p>Fault striations, showing plunge</p> <p> Mine shaft</p> <p> Prospect shaft</p> <p> Prospect pit</p> |
|---|-----------------|--|



GEOLOGIC MAP AND STRUCTURE SECTIONS OF THE CARLISLE MINE AREA, STEEPLE ROCK DISTRICT, GRANT COUNTY, NEW MEXICO