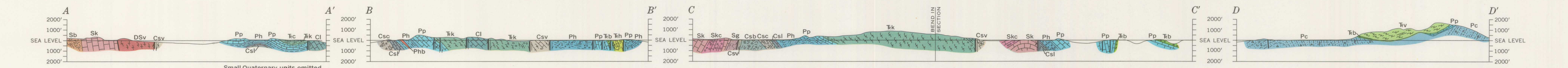


Base from U.S. Geological Survey topographic quadrangles: Sibka A-1, Sundum A-5, Port Alexander D-2, Port Alexander D-1, and Petersburg D-6



GEOLOGIC MAP OF KEKU ISLETS AND NEIGHBORING PARTS OF KUIU AND KUPREANOF ISLANDS, ALASKA

