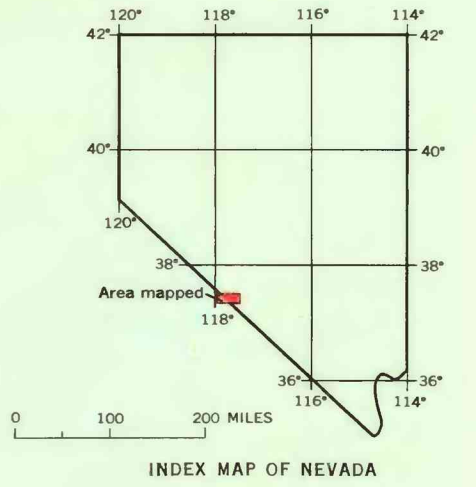
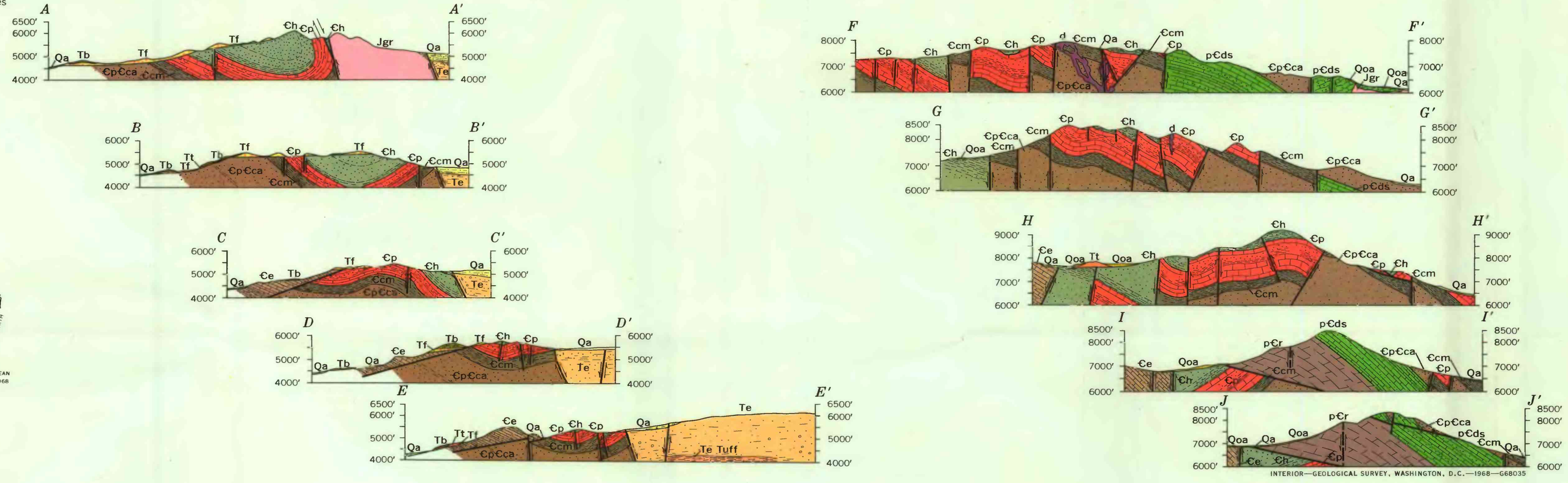


EXPLANATION

Recent	Qa	Alluvium	QUATERNARY
	Qoa	Older alluvium	
Pliocene	Tb	Basalt d, dike	TERTIARY
	Tt	Tuff	
	Tf	Fanglomerate and quartzite rubble	
Miocene and Upper Middle Cambrian-Ordovician	Te	Esmeralda Formation	JURASSIC
	Jgr	Granitic rocks	ORDOVICIAN
	Op	Palmetto Formation	
	Ce	Emigrant Formation	
	Cm	Mule Spring Limestone	CAMBRIAN
	Ch	Harkless Formation	
	Cp	Poleta Formation	
	Ccm	Campito Formation	
	CpCca	Campito Formation Ccm, Montenegro Member CpCca, Andrews Mountain Member	
	pCds	Deep Spring Formation	PRECAMBRIAN
	pCr	Reed Dolomite m, marble	
	pCw	Wyman Formation h, hornfels	

Base from U.S. Geological Survey Soldier Pass and Magruder Mountain quadrangles

Geology mapped by Edwin H. McKee in 1958, 1960, 1961



TRUE NORTH
MAGNETIC NORTH
APPROXIMATE MEAN
DECLINATION, 1958

Contact
Dashed where approximate

U
D
Fault
Dashed where approximate; dotted where concealed. U, upthrown side; D, downthrown side

Thrust fault
Sawtooth indicate upper plate

Strike and dip of bedding

Fossil locality
Numbers are referred to in text

GEOLOGIC MAP OF THE MAGRUDER MOUNTAIN AREA, CALIFORNIA-NEVADA

