

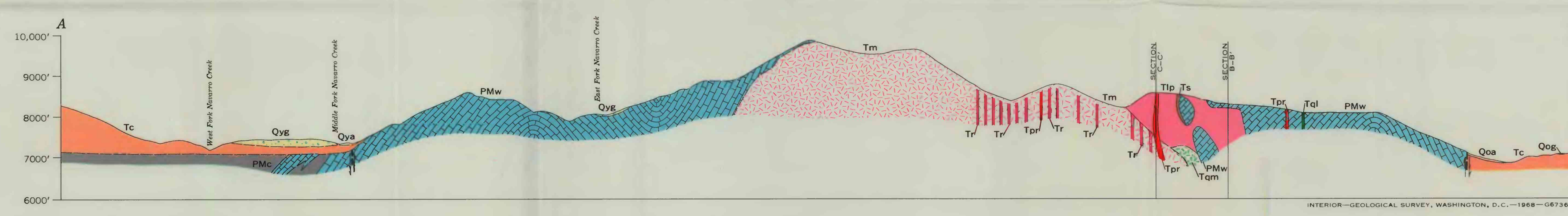
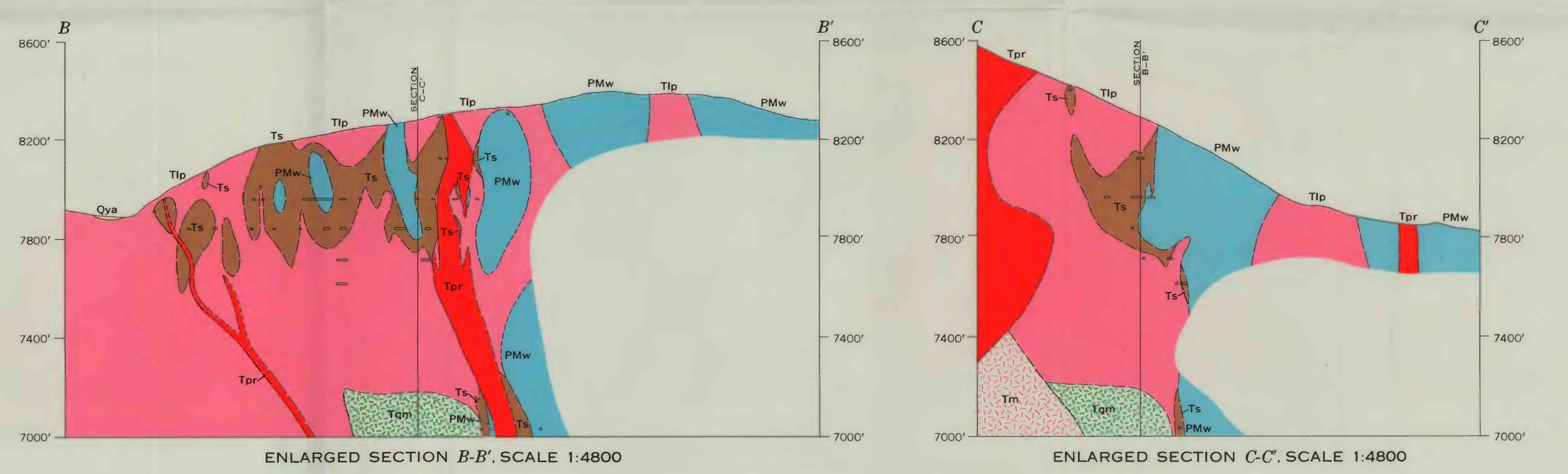
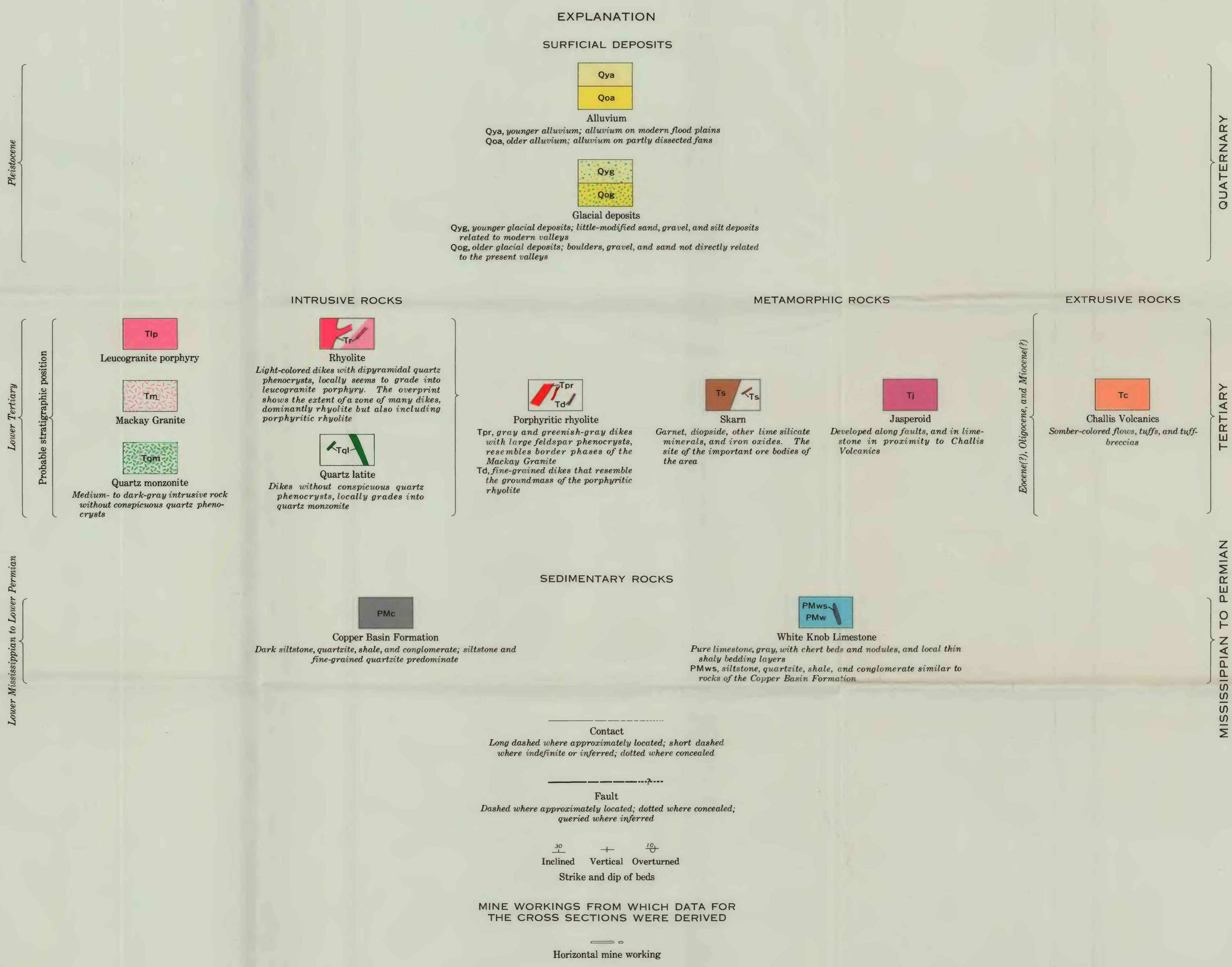
Base from U.S. Geological Survey
topographic quadrangles

SCALE 1:24 000

CONTOUR INTERVAL 40 FEET
DATUM IS MEAN SEA LEVEL

mapped in

Geology by W. H. Nelson and
C. P. Ross, 1958



GEOLOGIC MAP AND SECTIONS OF PART OF THE ALDER CREEK MINING DISTRICT, IDAHO