

EXPLANATION
DM 64-13
Dames and Moore boring, 1964
ARR-1C
The Alaska Railroad boring, 1967

Water table
Piezometric surface

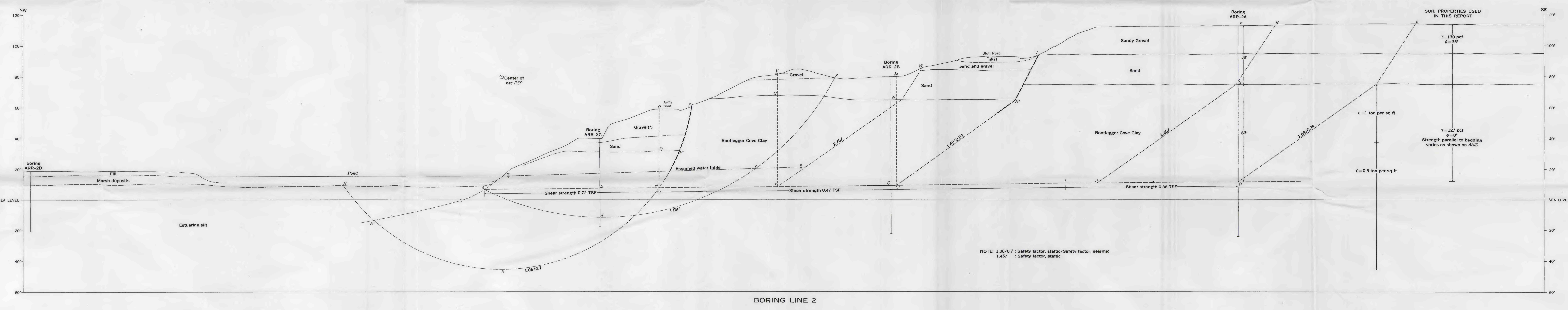
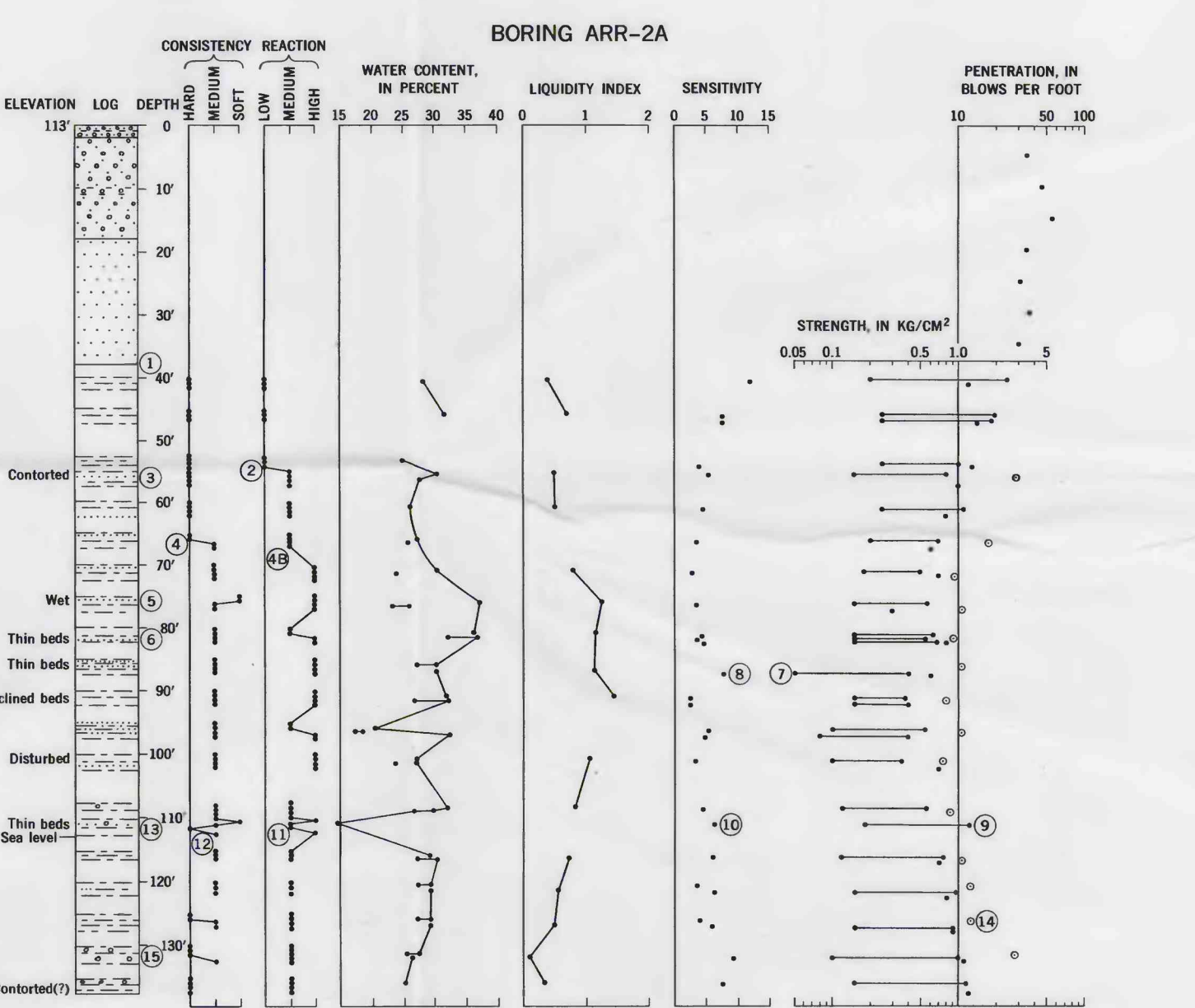
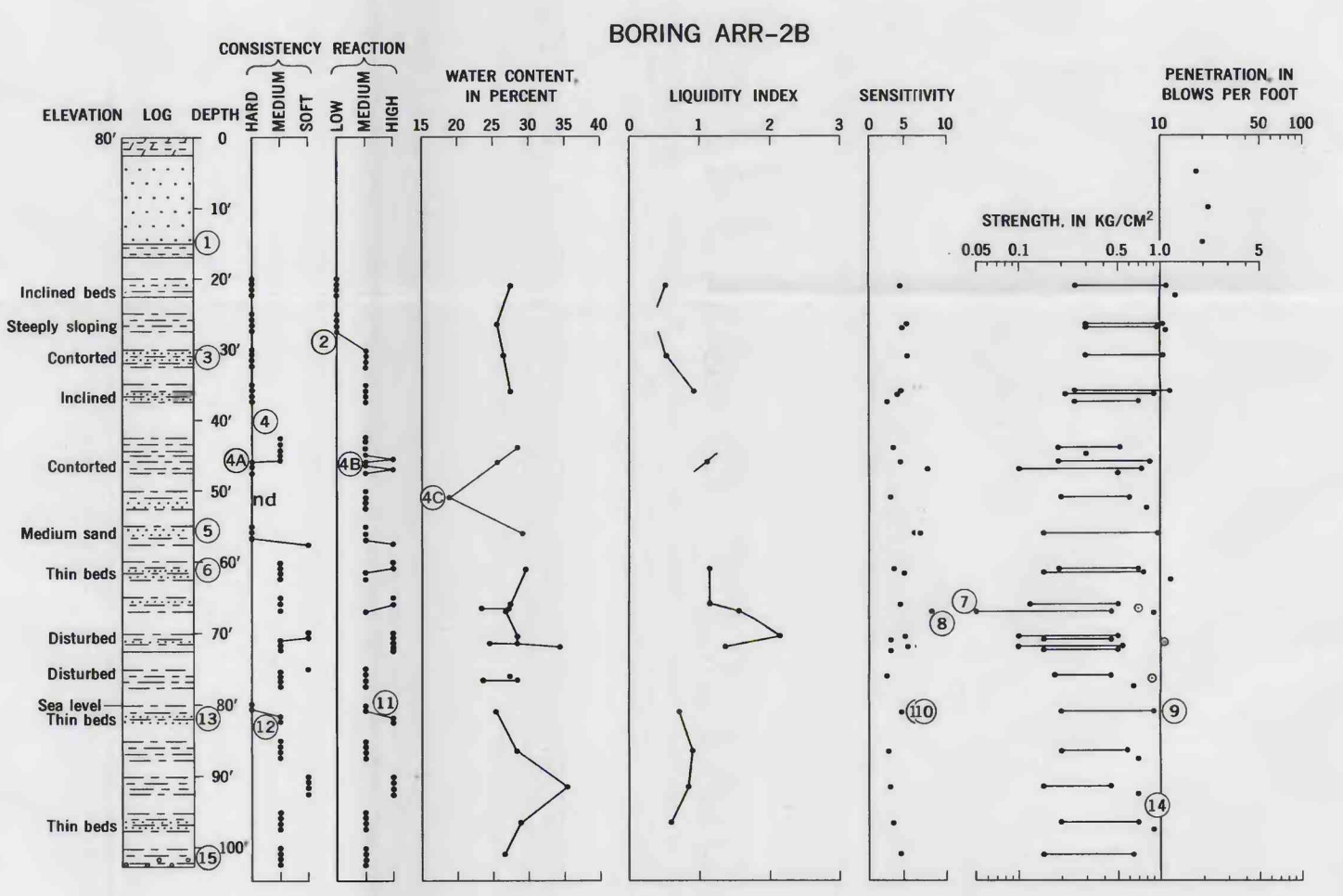
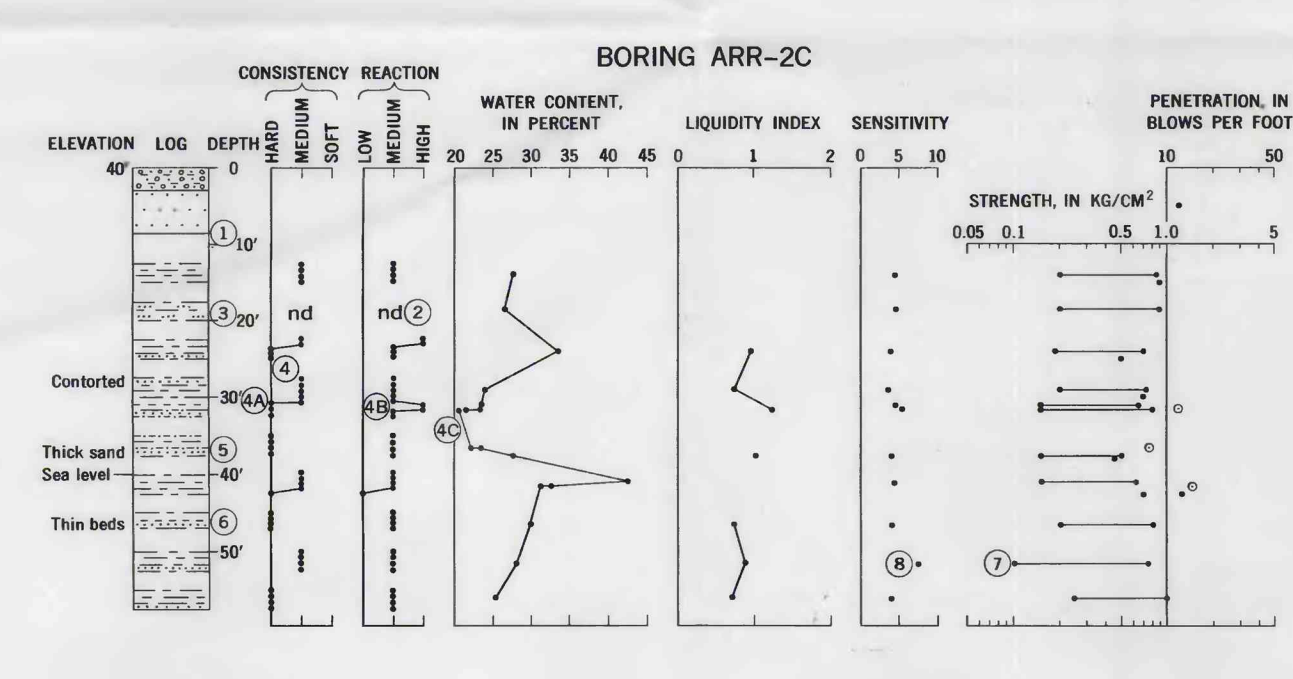
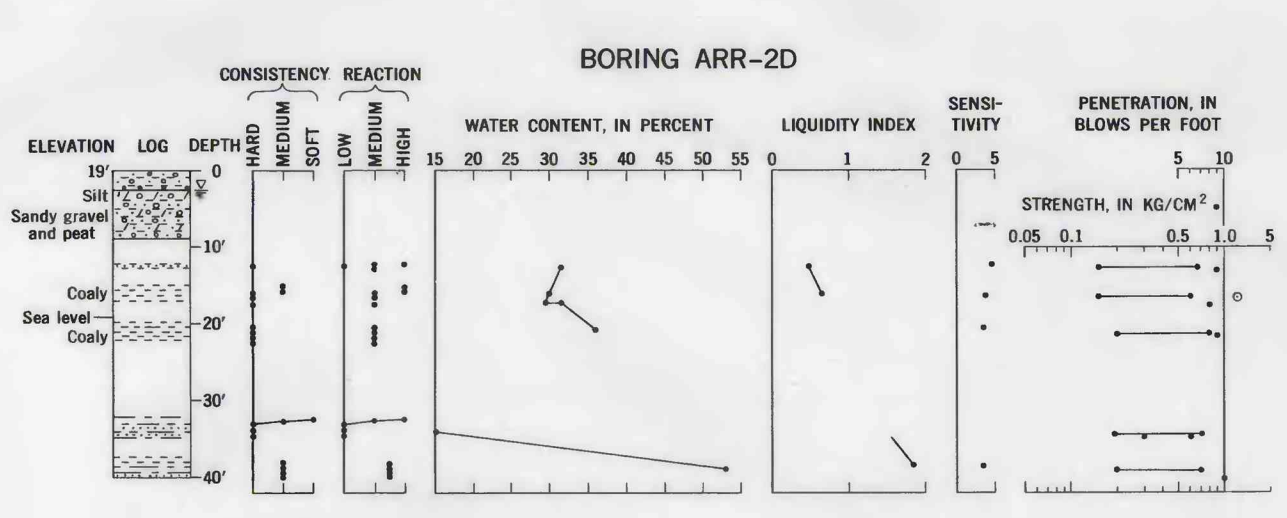
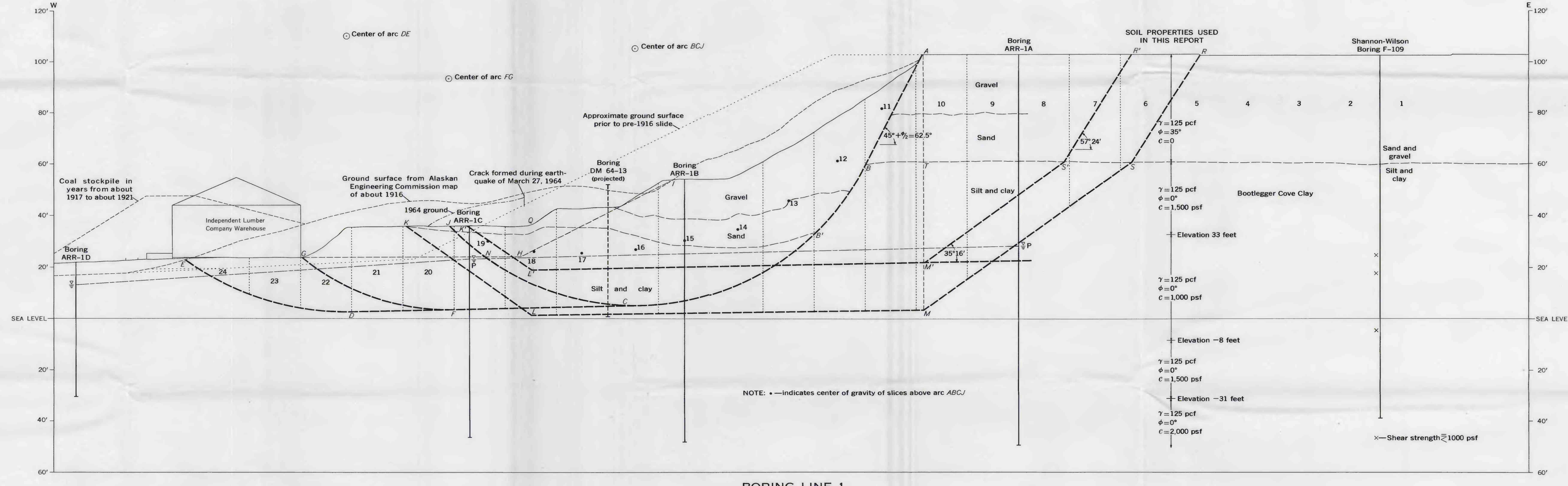
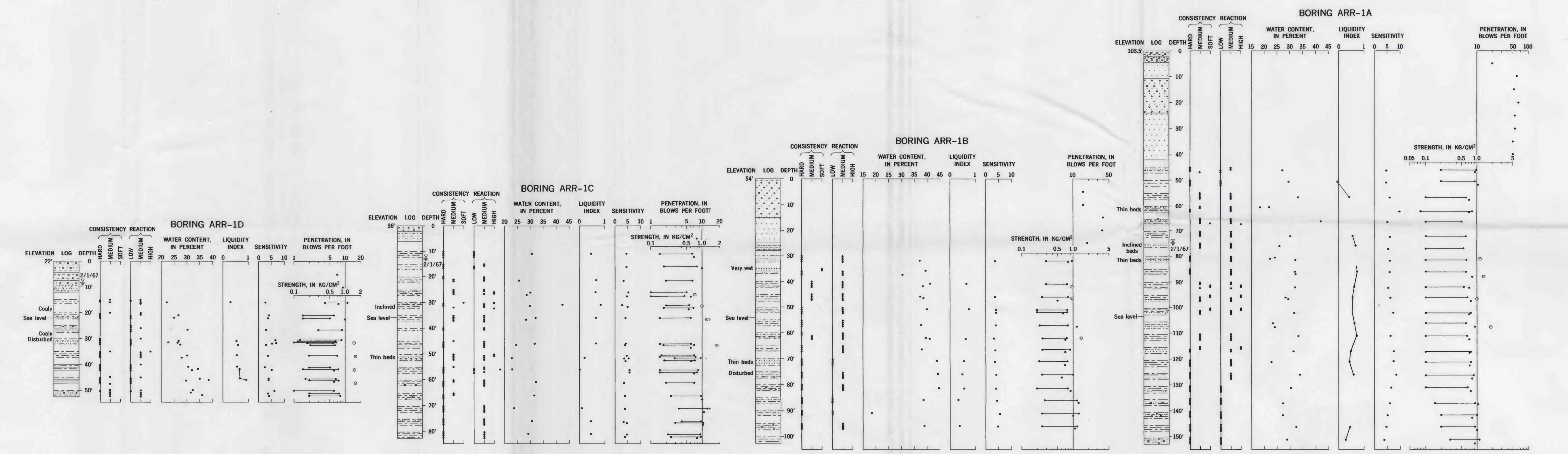
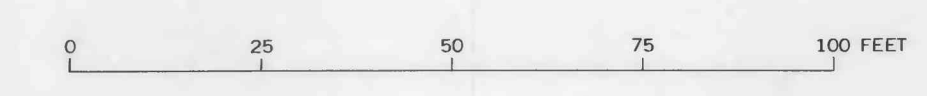
Laboratory vane shear strength
R, consolidated
L, undisturbed
S, spot-interval test

Unconfined compressive strength
nd
Not determined
TSF
Tons per square foot

Stratigraphic, physical, or other identifiable item described in table 2

Material symbols

Organic material
Gravel
Sand
Silt
Clay
Silty clay or clayey silt
Not logged



CROSS SECTIONS ALONG BORING LINES 1 AND 2 AND LOGS OF BORINGS, GOVERNMENT HILL, ANCHORAGE, ALASKA