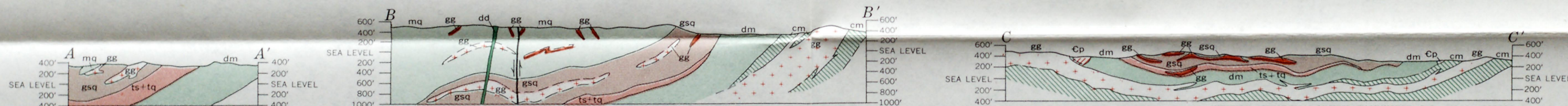
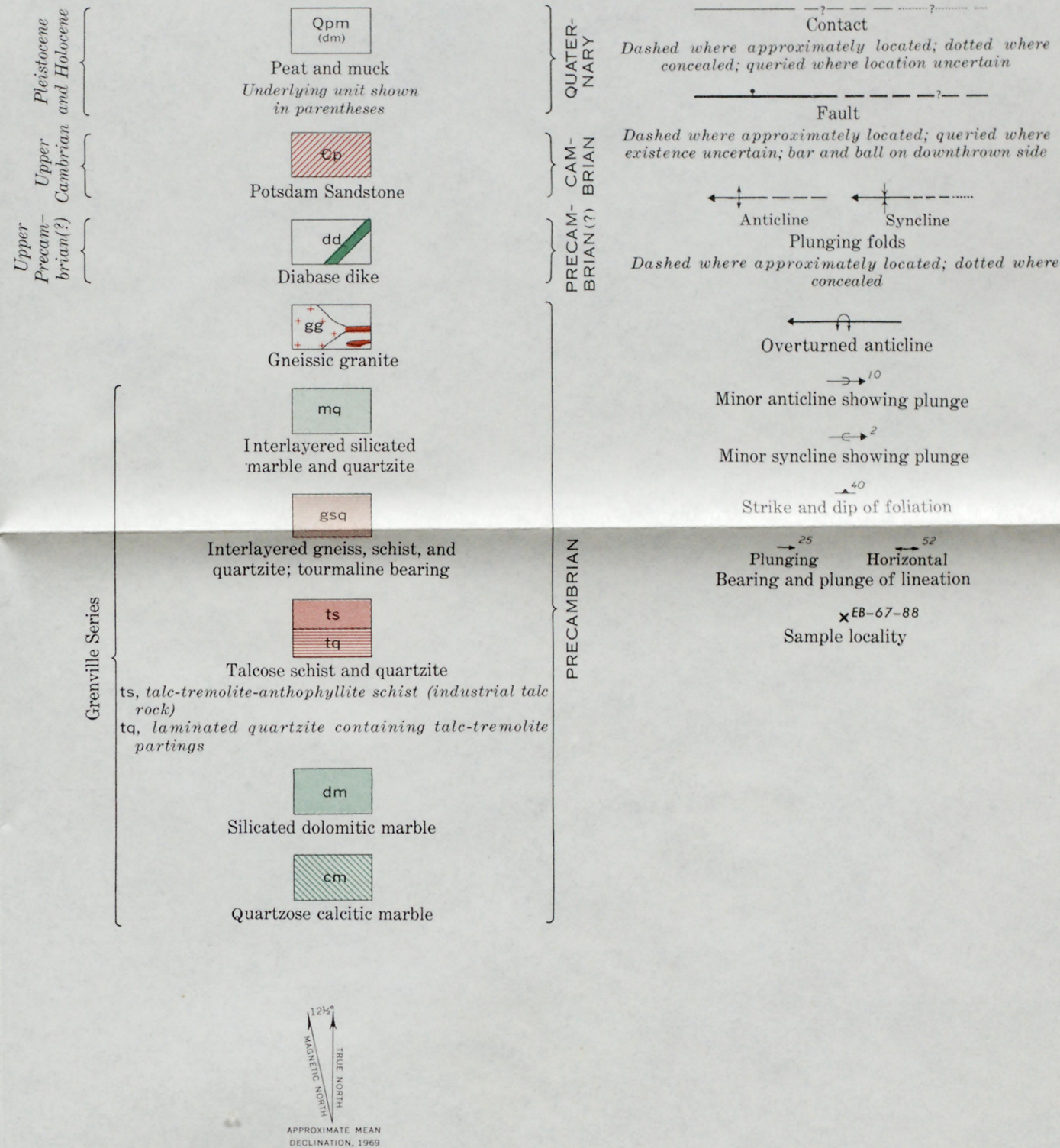
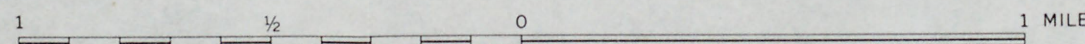


EXPLANATION



GEOLOGIC MAP AND SECTIONS OF AREA IN THE WESTERN PART OF
DE KALB TOWNSHIP, ST. LAWRENCE COUNTY, NEW YORK

SCALE 1:24 000



CONTOUR INTERVAL 10 FEET
DATUM IS MEAN SEA LEVEL