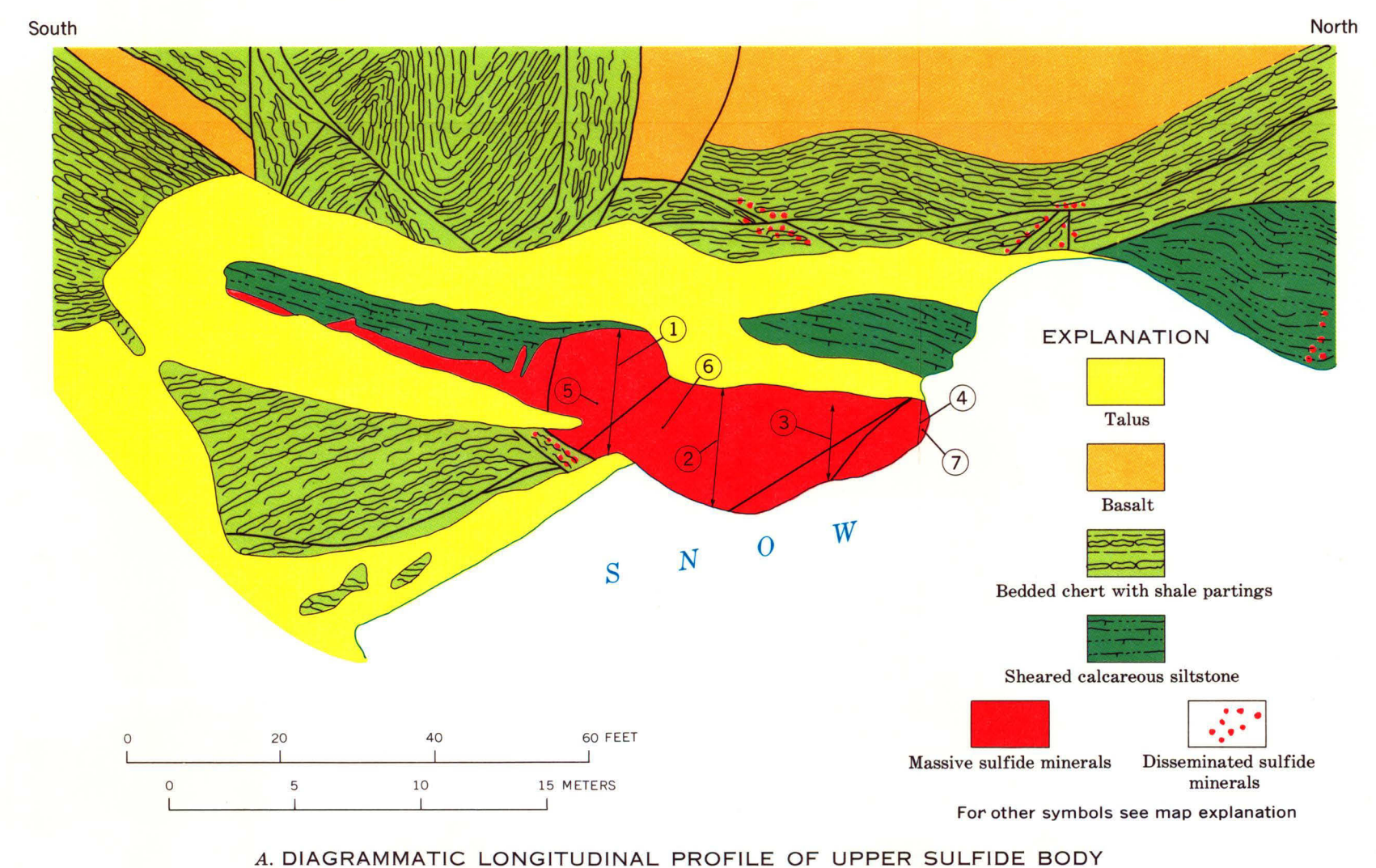
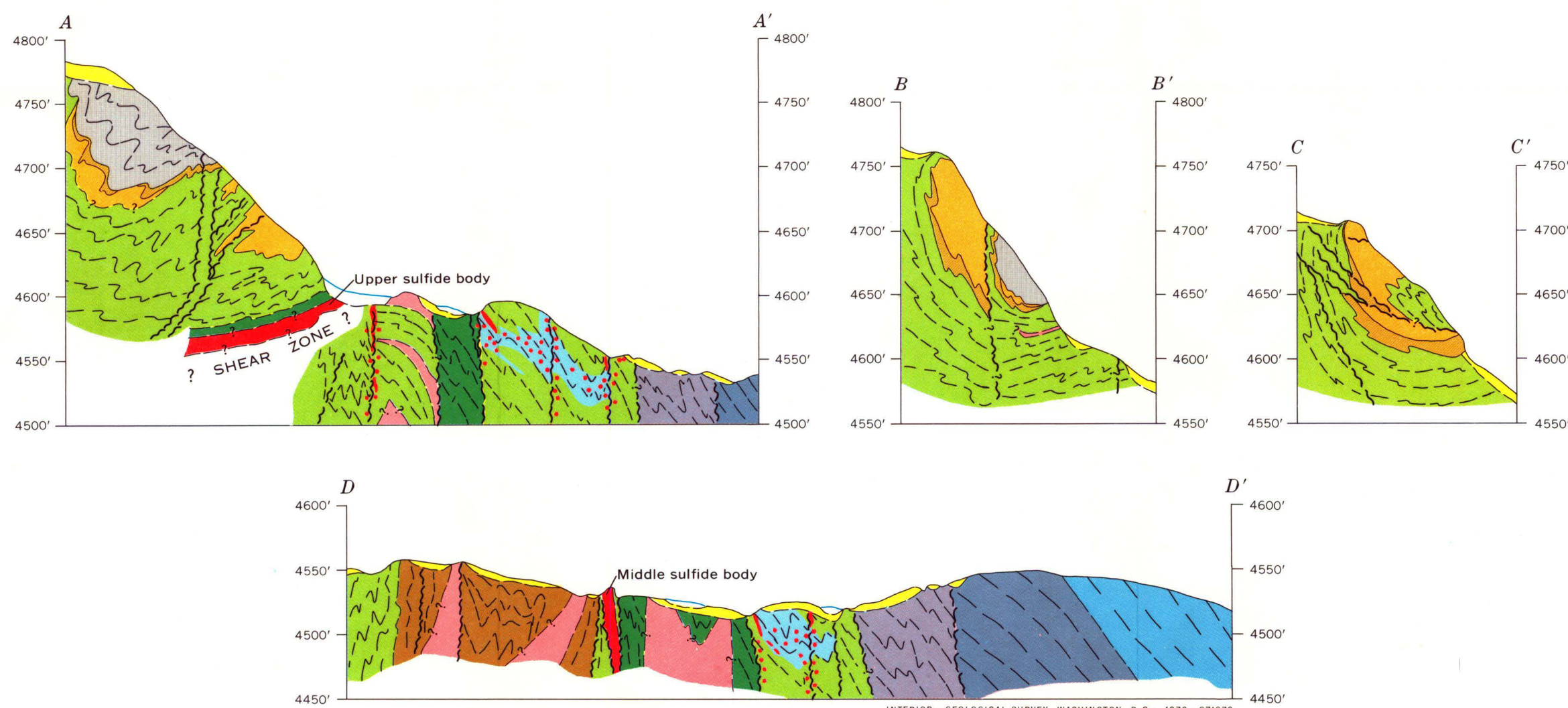
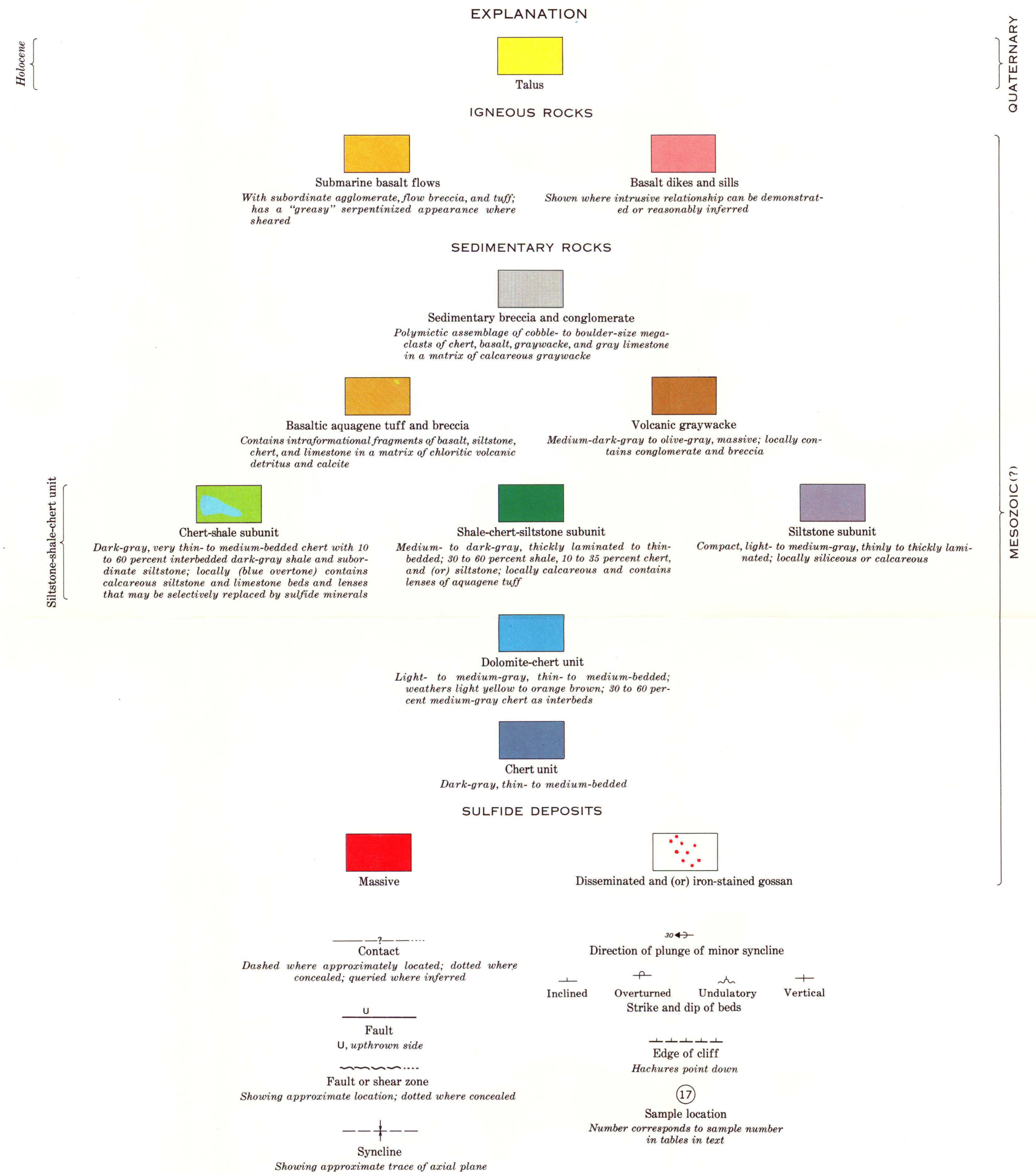
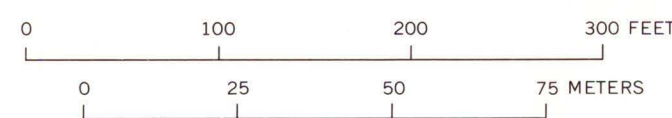


Base from planetable survey by G. D. Eberlein and B. L. Reed, 1968

Geology by B. L. Reed and G. D. Eberlein, 1968



# GEOLOGIC MAP AND SECTIONS OF MASSIVE SULFIDE DEPOSITS NEAR SHELLABARGER PASS SOUTHERN ALASKA RANGE, ALASKA