

EXPLANATION

U.S. Geological Survey geochemical sample localities

●⁰⁸⁹
Stream sediment

x²⁰⁵
Altered rock

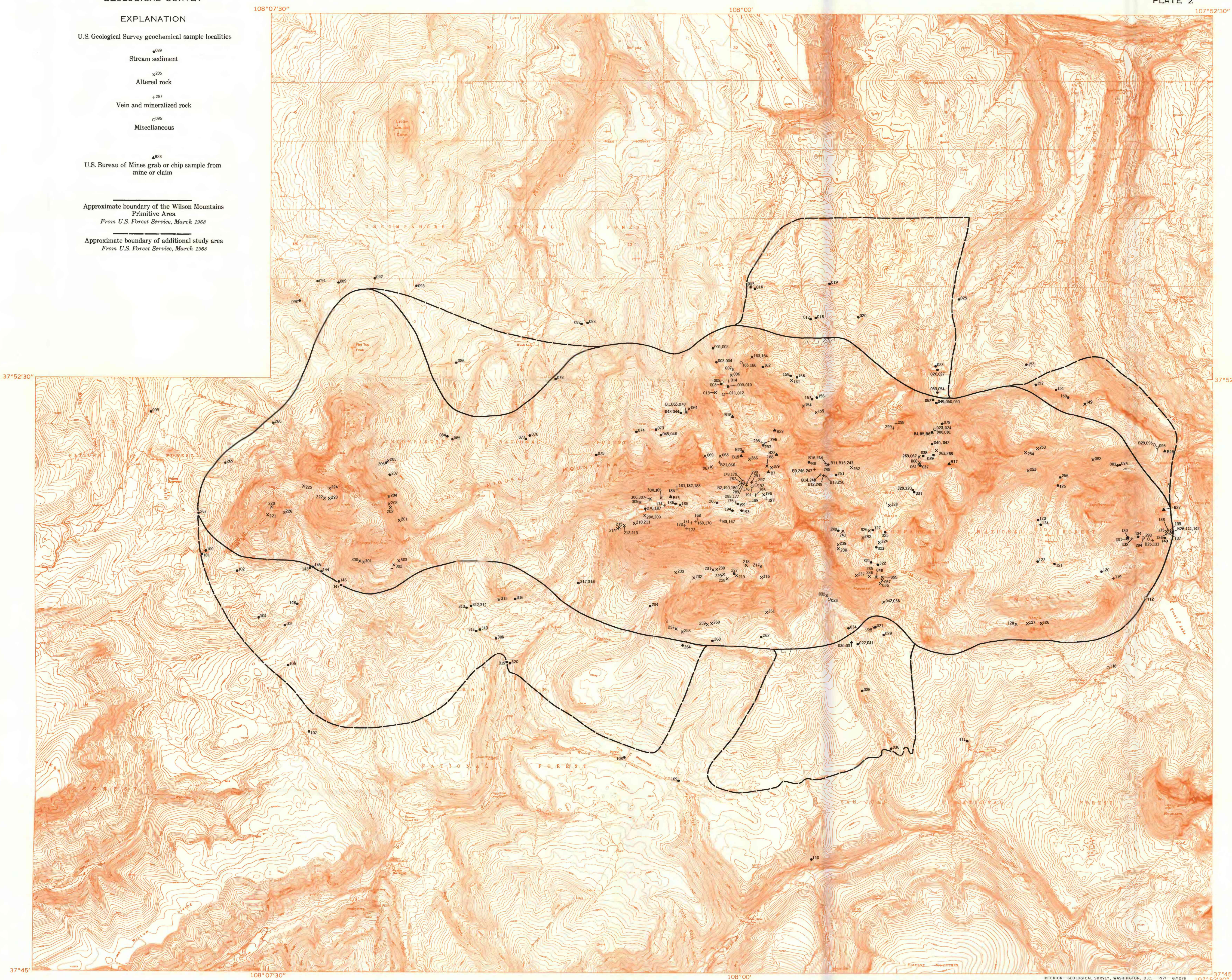
+²⁸⁷
Vein and mineralized rock

○⁰⁹⁵
Miscellaneous

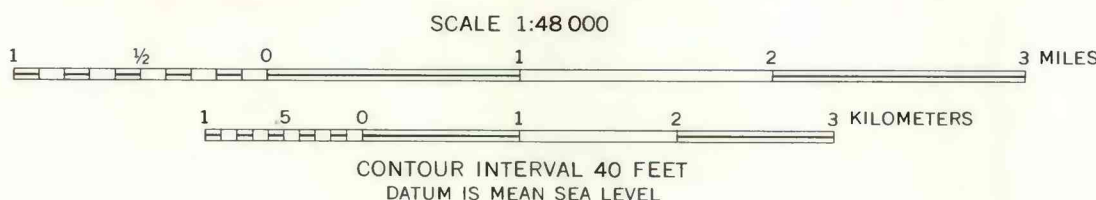
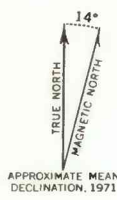
▲⁰²⁸
U.S. Bureau of Mines grab or chip sample from mine or claim

—
Approximate boundary of the Wilson Mountains Primitive Area
From U.S. Forest Service, March 1968

—
Approximate boundary of additional study area
From U.S. Forest Service, March 1968



Base from U.S. Geological Survey, 1:24,000:
Little Cone, Gray Head, Dolores Peak,
and Mount Wilson, 1953; Groundhog Mountain, 1964



MAP SHOWING SAMPLE LOCALITIES, WILSON MOUNTAINS PRIMITIVE AREA, SAN MIGUEL AND DOLORES COUNTIES, COLORADO