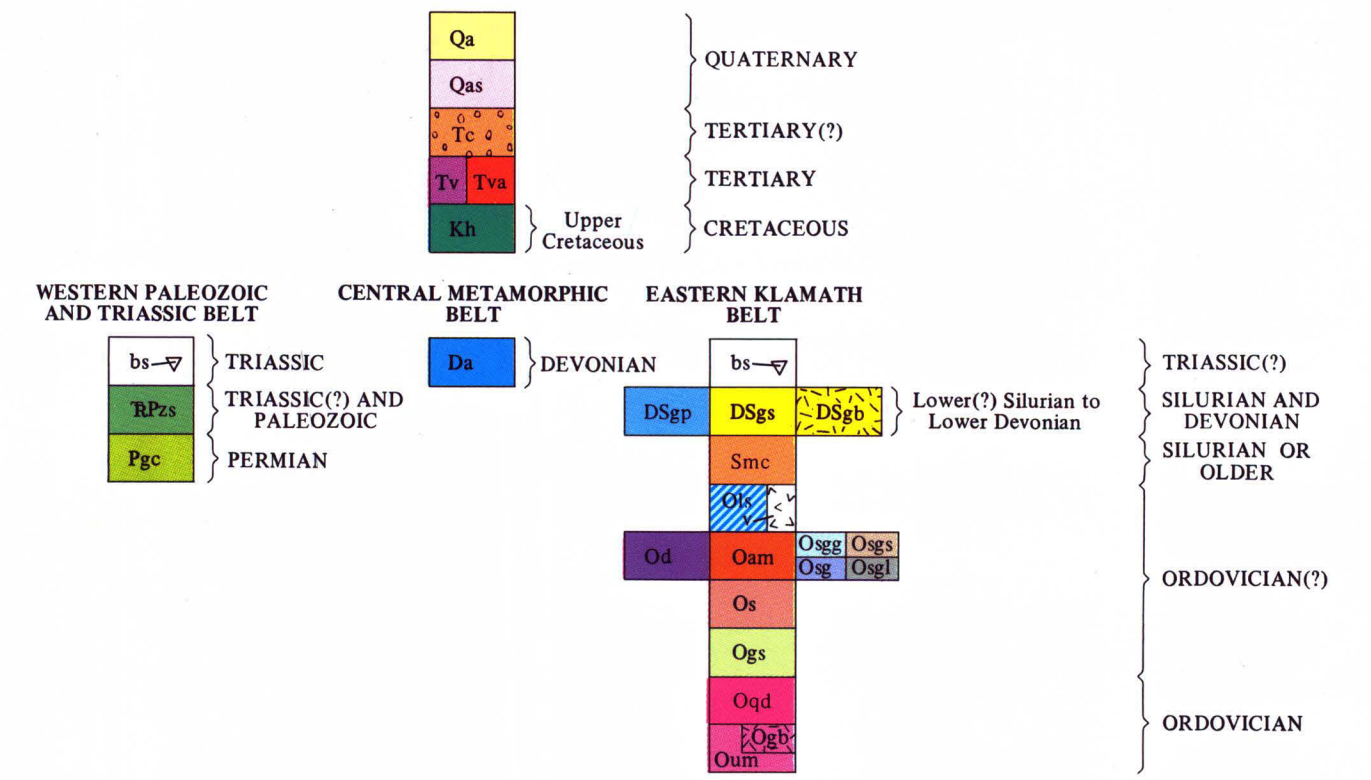


CORRELATION OF MAP UNITS

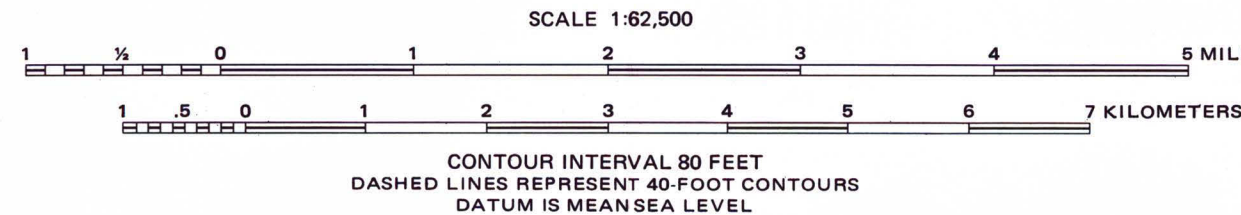
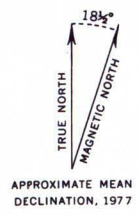


DESCRIPTION OF MAP UNITS

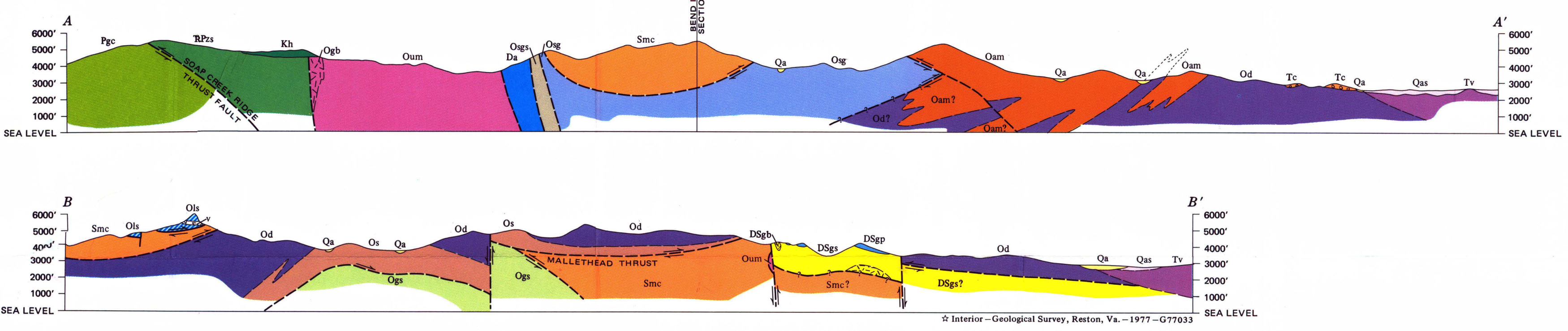
- Qa ALLUVIUM
- Qas ALLUVIUM OF SHASTA VALLEY
- Tc CONGLOMERATE - Well-indurated pebble to cobble conglomerate. Some coarse sand lenses
- Tv VOLCANIC ROCKS - Andesitic tuff breccias and flows; remnant of olivine basalt flow north of Bonnet Rock
- Tva Andesite neck at Gregory Mountain
- Kh HORN BROOK FORMATION (Upper Cretaceous)
- bs-∇ BLUESCHIST - Lawsonite-sodic amphibole rocks. Isolated bodies in Stuart Fork Formation and in greenschist in southwestern part of quadrangle
- RPzs STUART FORK FORMATION (Paleozoic and Triassic?)
- Pgc GREENSTONE-CHERT ASSEMBLAGE - Includes argillite and limestone
- Da AMPHIBOLITE
- GAZELLE FORMATION (Lower? Silurian to Lower Devonian)
  - DSgp Payton Ranch Limestone Member
  - DSgs Sandstone, shale, chert, chert-pebble conglomerate
  - DSgb Spilitic basalt
  - Smc MOFFETT CREEK FORMATION (Silurian or older) - Dismembered calcareous sandstone-shale unit
- LIMESTONE OF DUZEL ROCK - Includes minor amounts of chert, shale, and spilitic volcanic rock (pattern)
- Od DUZEL PHYLLITE (Ordovician?)
- Oam ANTELOPE MOUNTAIN QUARTZITE (Ordovician?)
- SCHULMEYER GULCH SEQUENCE
  - Osgg Greenstone and greenschist on hill east of Yreka
  - Osgs Semischist adjacent to amphibolite belt
  - Osg Phyllitic siltstone, discontinuous lenses of chert and quartzite
  - Osgl Limestone
- Os SISSEL GULCH GRAYWACKE (Ordovician?)
- Ogs GREENSCHIST - Albite-chlorite-epidote-actinolite schist and phyllite; limestone lenses; minor siliceous phyllite and semischist; few tectonic blocks of glaucophane-lawsonite rock. Probably mé lange
- Oqd QUARTZ DIORITE AND TRONDHEMITE
- Oum ULTRAMAFIC ROCKS
  - Ogb Gabbro - Small bodies in serpentinite and amphibolite

- Contact
- Fault - Dashed where approximately located
- Thrust fault - Dashed where approximately located. Saw-teeth on upper plate
- Strike and dip of bedding
  - Inclined
  - Vertical
  - Horizontal
  - Overturned
- Strike and dip of foliation
  - Inclined
  - Vertical
- Attitude of minor folds
  - Strike and dip of axial plane and plunge of axis
    - Inclined
    - Vertical
  - Trend and plunge of axis
    - Inclined
    - Horizontal

Base from U.S. Geological Survey, 1954  
10,000-foot grid based on California  
coordinate system, zone 1



Geology by P.E. Hotz, 1969,  
1971-73, 1975



GEOLOGIC MAP OF THE YREKA QUADRANGLE, CALIFORNIA

Interior Geological Survey, Reston, Va. - 1977 - G-77033