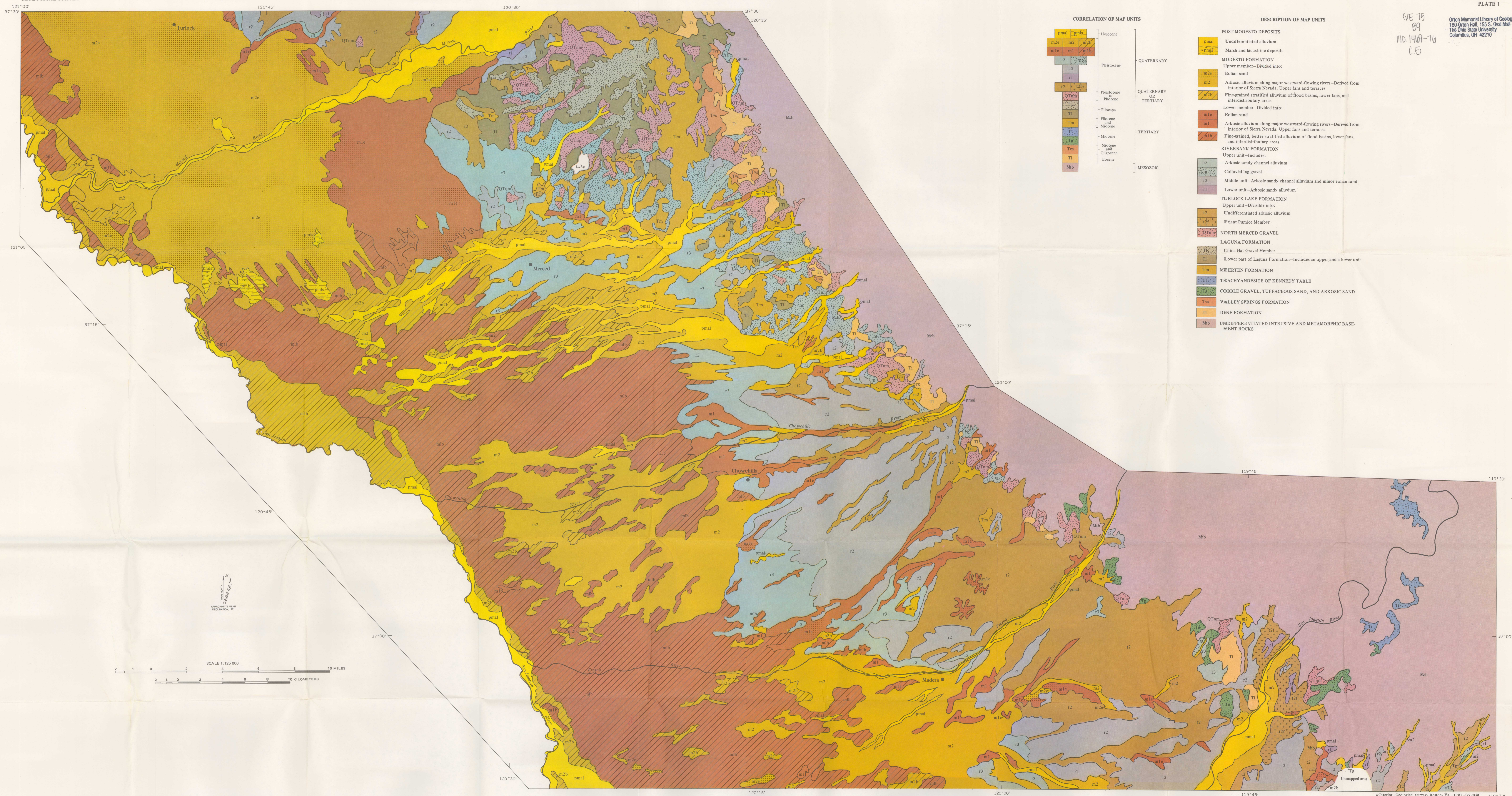
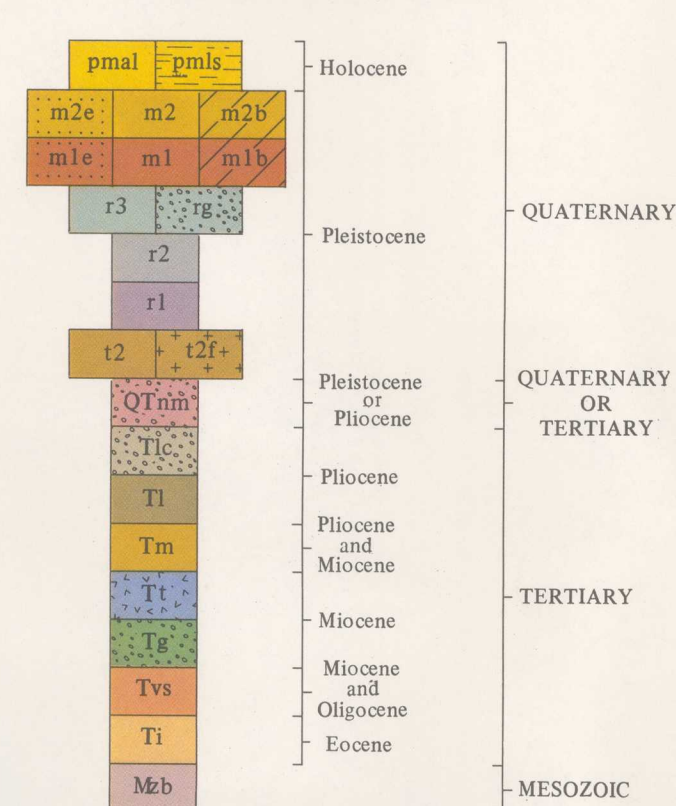


QE 75
B9
V10.1408-76
C.5



CORRELATION OF MAP UNITS



DESCRIPTION OF MAP UNITS

- POST-MODESTO DEPOSITS
- pmal Undifferentiated alluvium
 - pm1b Marsh and lacustrine deposits
- MODESTO FORMATION
- Upper member—Divided into:
- m2e Eolian sand
 - m2 Arkosic alluvium along major westward-flowing rivers—Derived from interior of Sierra Nevada. Upper fans and terraces
 - m2b Fine-grained stratified alluvium of flood basins, lower fans, and interdistributary areas
- Lower member—Divided into:
- m1e Eolian sand
 - m1 Arkosic alluvium along major westward-flowing rivers—Derived from interior of Sierra Nevada. Upper fans and terraces
 - m1b Fine-grained, better stratified alluvium of flood basins, lower fans, and interdistributary areas
- RIVERBANK FORMATION
- Upper unit—Includes:
- r3 Arkosic sandy channel alluvium
 - r2 Colluvial lag gravel
 - r1 Middle unit—Arkosic sandy channel alluvium and minor eolian sand
 - r1 Lower unit—Arkosic sandy alluvium
- TURLOCK LAKE FORMATION
- Upper unit—Divisible into:
- t2 Undifferentiated arkosic alluvium
 - t2b Friant Pumice Member
- NORTH MERCED GRAVEL
- LAGUNA FORMATION
- T1 China Hat Gravel Member
 - T1 Lower part of Laguna Formation—Includes an upper and a lower unit
- MEHRTEN FORMATION
- TRACHYANDESITE OF KENNEDY TABLE
- COBBLE GRAVEL, TUFFACEOUS SAND, AND ARKOSIC SAND
- VALLEY SPRINGS FORMATION
- IONE FORMATION
- Mdb UNDIFFERENTIATED INTRUSIVE AND METAMORPHIC BASEMENT ROCKS

GENERALIZED GEOLOGIC MAP OF THE MERCED-MADERA AREA, NORTHEASTERN SAN JOAQUIN VALLEY, CALIFORNIA