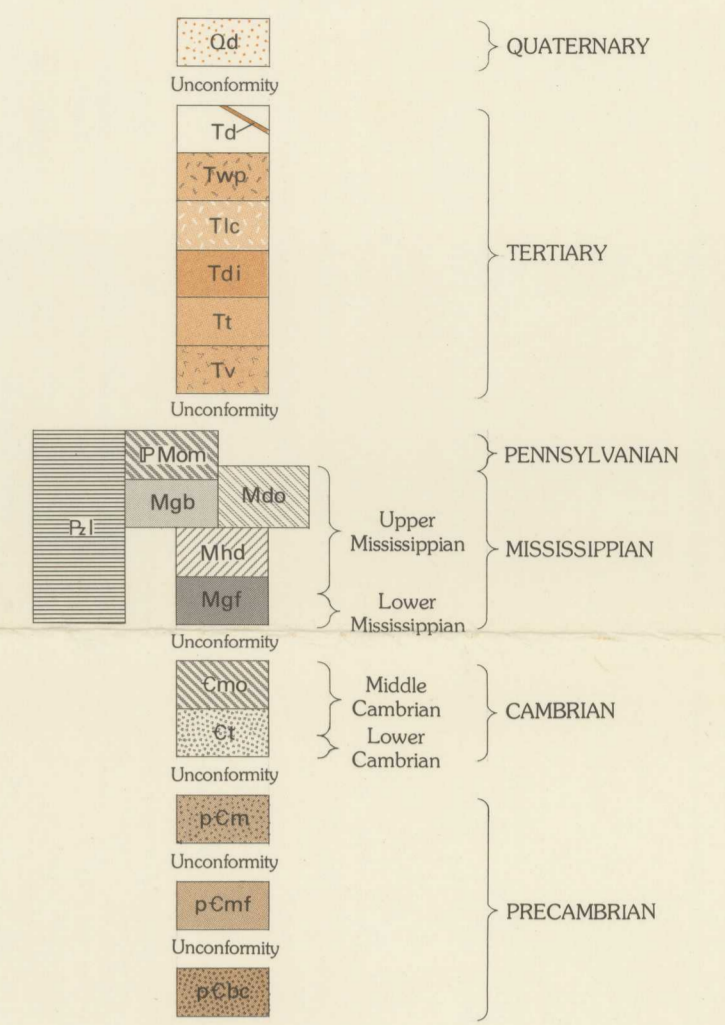




CORRELATION OF MAP UNITS

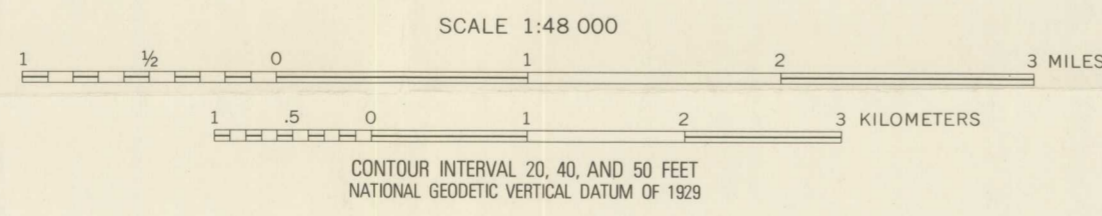


DESCRIPTION OF MAP UNITS

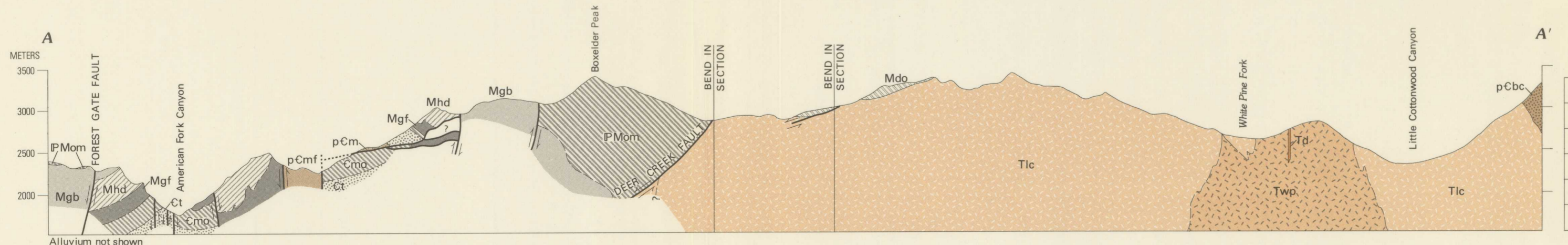
- Qd SURFICIAL DEPOSITS (QUATERNARY)
- Td DIKE ROCKS (TERTIARY)
- Twp QUARTZ MONZONITE OF WHITE PINE STOCK (TERTIARY)
- Tlc QUARTZ MONZONITE OF LITTLE COTTONWOOD STOCK (TERTIARY)
- Tdi DIORITE OF BELLS CANYON (TERTIARY)
- Tt TIBBLE FORMATION (TERTIARY)
- Tv TRAVERSE VOLCANICS OF SLENTZ (1955) (TERTIARY)
- Pli UNDIFFERENTIATED LIMESTONE (PALEOZOIC)—Brecciated crinoidal limestone. Forms klippe at mouth of Bells Canyon
- Pm OQUIRRH FORMATION (PENNSYLVANIAN) AND MANNING CANYON SHALE (LOWER PENNSYLVANIAN AND UPPER MISSISSIPPIAN)—Occurs south of Deer Creek fault only
- Mdo DOUGHNUT FORMATION (UPPER MISSISSIPPIAN)—Occurs north of Deer Creek fault only
- Mgb GREAT BLUE LIMESTONE (UPPER MISSISSIPPIAN)—Occurs south of Deer Creek fault only
- Mhd HUMBUG FORMATION (UPPER MISSISSIPPIAN) AND DESERT LIMESTONE (UPPER AND LOWER MISSISSIPPIAN)
- Mgf GARDISON LIMESTONE AND FITCHVILLE FORMATION (LOWER MISSISSIPPIAN)
- Ct MAXFIELD LIMESTONE AND OPHIR FORMATION (MIDDLE CAMBRIAN)
- pCm TINTIC QUARTZITE (MIDDLE AND LOWER CAMBRIAN)
- pCmf MUTUAL FORMATION (PRECAMBRIAN)
- pCbc MINERAL FORK TILLITE (PRECAMBRIAN)
- pCbc BIG COTTONWOOD FORMATION (PRECAMBRIAN)

- CONTACT—Dashed where approximately located
- NORMAL FAULT—Dashed where approximately located; dotted where concealed or inferred. Bar and ball on downthrown side
- THRUST FAULT—Teeth on upper plate. Dashed where inferred
- AXIAL TRACE OF ANTICLINE—Dashed where inferred
- AXIAL TRACE OF SYNCLINE—Dashed where inferred
- STRIKE AND DIP OF BEDS
  - 60° Inclined
  - 90° Vertical
  - 20° Overtumed
- MINERALIZED VEINS OR STRINGERS
- BOUNDARY OF LONE PEAK WILDERNESS STUDY AREA

Base from U.S. Geological Survey, 1:24,000  
Draper, 1952-63 (69 PR); Boundary Peak and  
Brighton, 1956; Lehi, 1951 (69 PR);  
Timpanogos Gorge, 1948 (69PR)



Geology modified by C. S. Bromfield  
from Baker and Crittenden (1955, 1956), Crittenden  
(1955a and 1955b), and Bullock (1958)  
Aeromagnetic survey flown in 1974 at 12,000 ft (3,700 m)  
by Aerial Surveys; flight line spacing 1 mi (1.6 km)



GEOLOGIC MAP AND CROSS SECTION OF THE LONE PEAK WILDERNESS STUDY AREA, UTAH