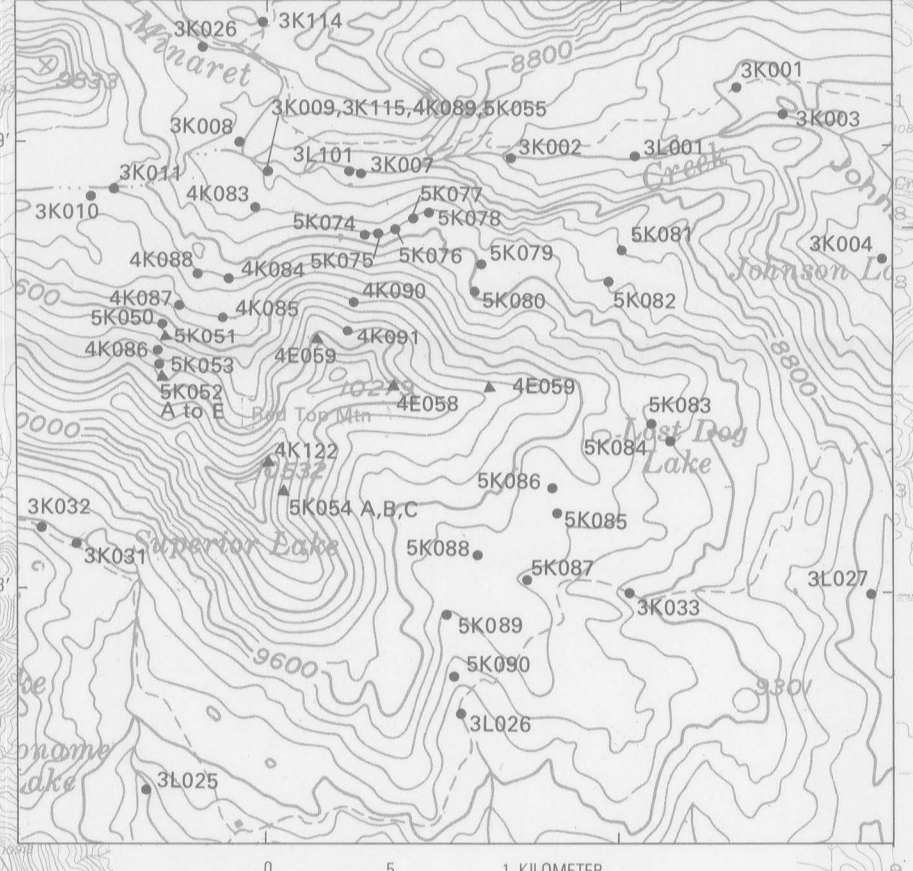


EXPLANATION
● Stream-sediment sample
▲ Rock or mineral sample
--- Boundary of Minarets Wilderness
--- Boundary of study area



INSET MAP OF UPPER NORTH FORK BASIN AREA



INSET MAP OF RED TOP MOUNTAIN AREA

SCALE 1:62,500
HORIZONTAL INTERVAL 80 FEET
VERTICAL INTERVAL 100 FEET
NAD 83 DATUM

Base from U.S. Geological Survey
Devils Postpile, Eastern Peak, Merced Peak,
Mono Crest, Shady Peak, 1953.
Tulare Mountains, 1959

1970-80 GEODESIC SURVEY RESULTS BY
J. D. CROSS, R. D. DUNHAM, R. C. FORTS, N. K. HUBER, 1973.
B. S. BRECK, N. K. HUBER, 1975

MAP SHOWING SAMPLE LOCALITIES IN THE MINARETS WILDERNESS AND ADJACENT AREAS, CALIFORNIA