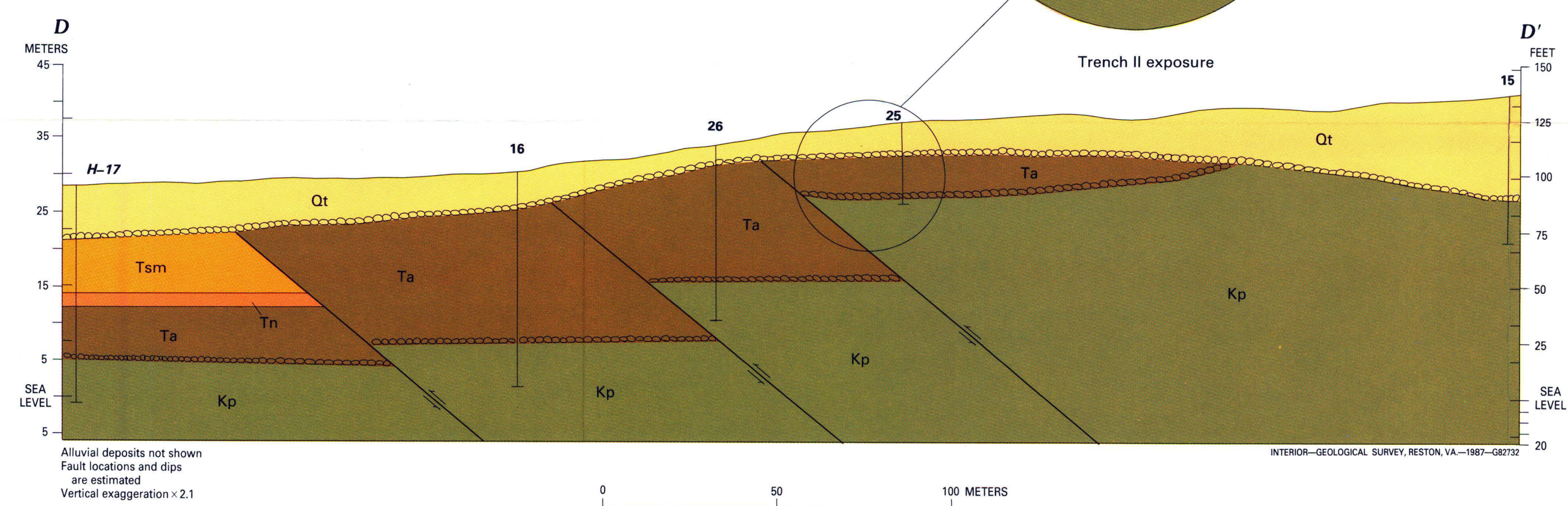
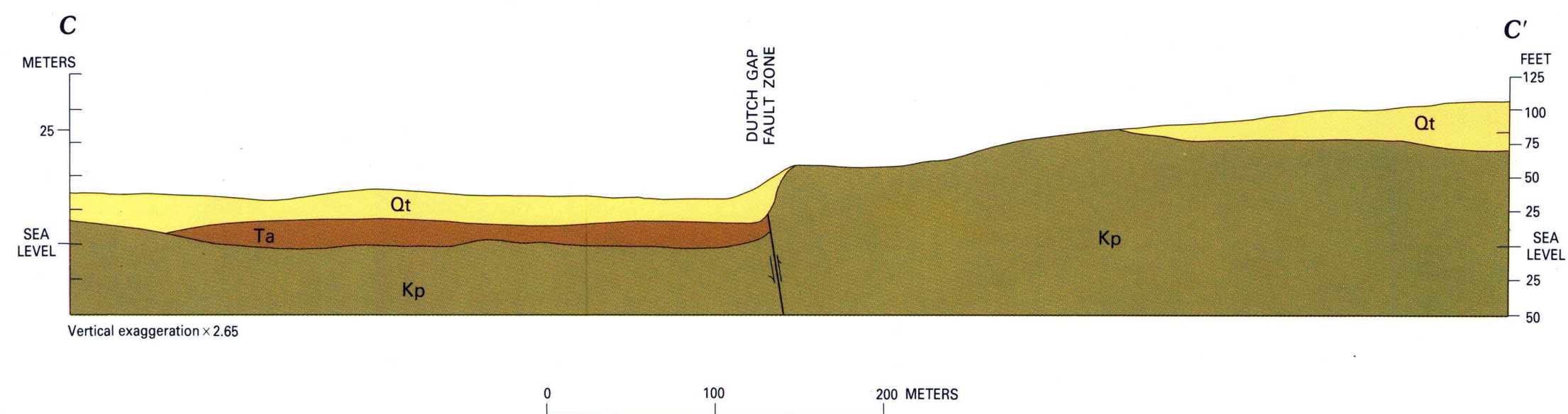


- EXPLANATION**  
Cross sections of D-D' and trenches I and II
- Qtbc Bacons Castle Formation of Coch (1965)
  - 16 Auger hole
  - H-17 Valley wall outcrop (several composite sections)
  - Pebble or cobble layer
  - ↘ Crossbedding



**GEOLOGIC CROSS SECTIONS OF HOPEWELL, VIRGINIA, AND VICINITY**