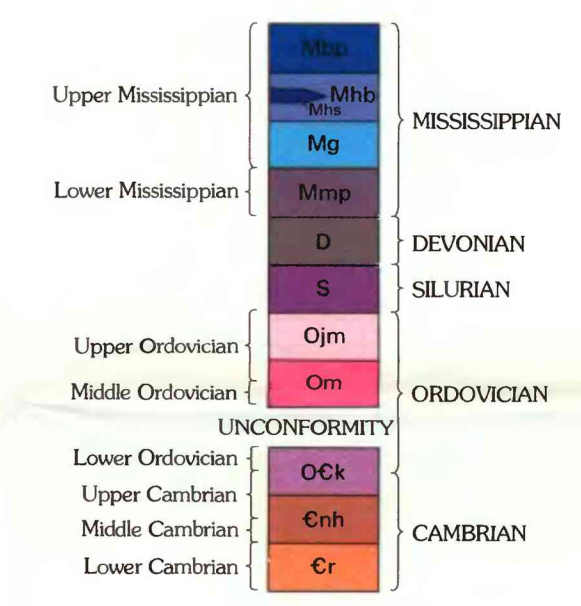


**CORRELATION OF MAP UNITS**

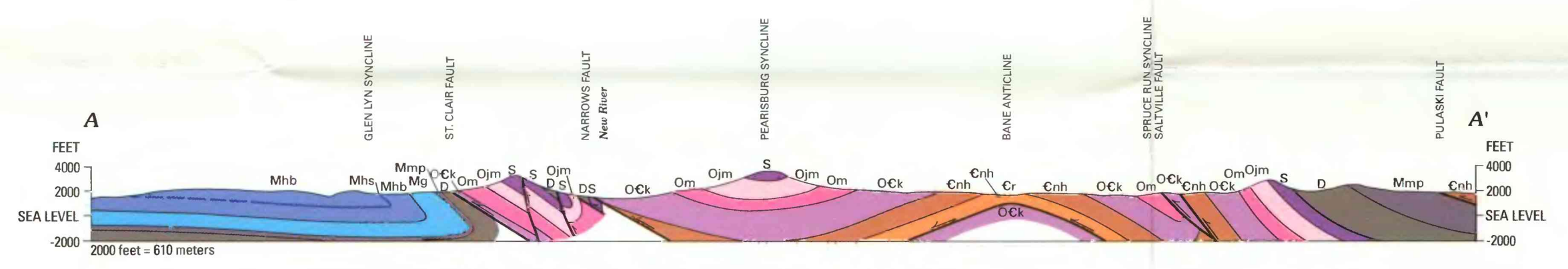
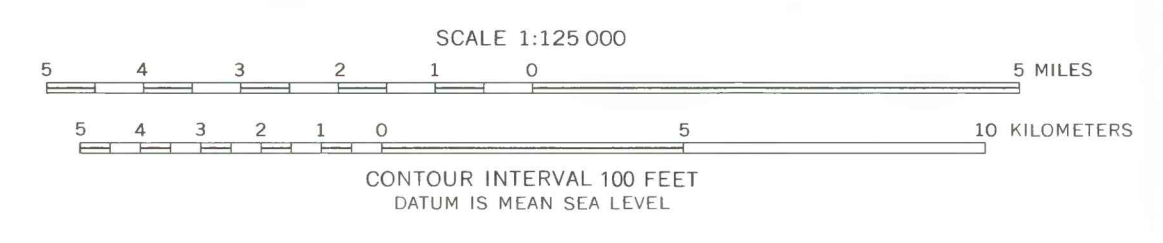


**DESCRIPTION OF MAP UNITS**

- Mhb** **Bluestone Formation and Princeton Sandstone (Upper Mississippian)**—Shale, red and gray, sandstone, and siltstone, with minor coal and limestone; conglomerate lenses at base
  - Mhb** **Hinton and Bluefield Formations (Upper Mississippian)**—Shale, red and gray, sandstone, and siltstone, with minor limestone and coal
  - Mhb** **Stony Gap Sandstone Member of Hinton Formation (Upper Mississippian)**—Orthoquartzite, thin northward to the point where it pinches out
  - Mg** **Greenbrier Limestone (Upper Mississippian)**—Fossiliferous limestone, partly oolitic, partly cherty, with a few red and gray shale interbeds
  - Mmp** **Maccrady Shale and Price Formation (Lower Mississippian)**—Red shale (Maccrady), sandstone, siltstone, gray shale, and minor coal (Price). Quartz-pebble conglomerate at base
  - D** **Devonian rocks, undivided**—Shale, sandstone, siltstone, and chert of the Chemung Formation, Brallier and Millboro Shales, Huntersville Chert, and Rocky Gap Sandstone
  - S** **Silurian rocks, undivided**—Sandstone, gray and red, and orthoquartzite with minor shale, conglomerate, and limestone of the Tonoloway Limestone, Keefer Sandstone, Rose Hill Formation, and Tuscarora Quartzite
  - Ojm** **Juniata and Martinsburg Formations (Middle and Upper Ordovician)**—Sandstone, siltstone, and mudstone, mostly red, and limestone and shale
  - Om** **Middle Ordovician limestones, undivided**—Fossiliferous, partly cherty limestone with minor shale, red mudstone, and sandstone
  - Ock** **Knox Group (Lower Ordovician and Upper Cambrian)**—Dolomite, partly cherty, with some limestone and sandstone
  - Cr** **Nolichucky Shale and Honaker Dolomite (Upper and Middle Cambrian)**—Dolomite, with minor amounts of chert, and gray shale
  - Cr** **Rome Formation (Lower Cambrian)**—Red shale with minor siltstone and dolomite
- Contact—Dashed where approximately located
- Fault—Dashed where approximately located. Bar and ball on downthrown side
- ▲ Thrust fault—Dashed where approximately located. Sawteeth on upper plate
- Strike and dip of beds**
- ↗ Inclined
  - ⊥ Vertical
  - ⊕ Horizontal
  - ↘ Overturned
  - ⊗ Quarry

Base from U.S. Geological Survey  
Bluefield, 1:250,000, 1966

Geology mapped and  
compiled, 1952-67



**GEOLOGIC MAP OF GILES COUNTY, VIRGINIA, AND ADJACENT AREAS IN VIRGINIA AND WEST VIRGINIA**