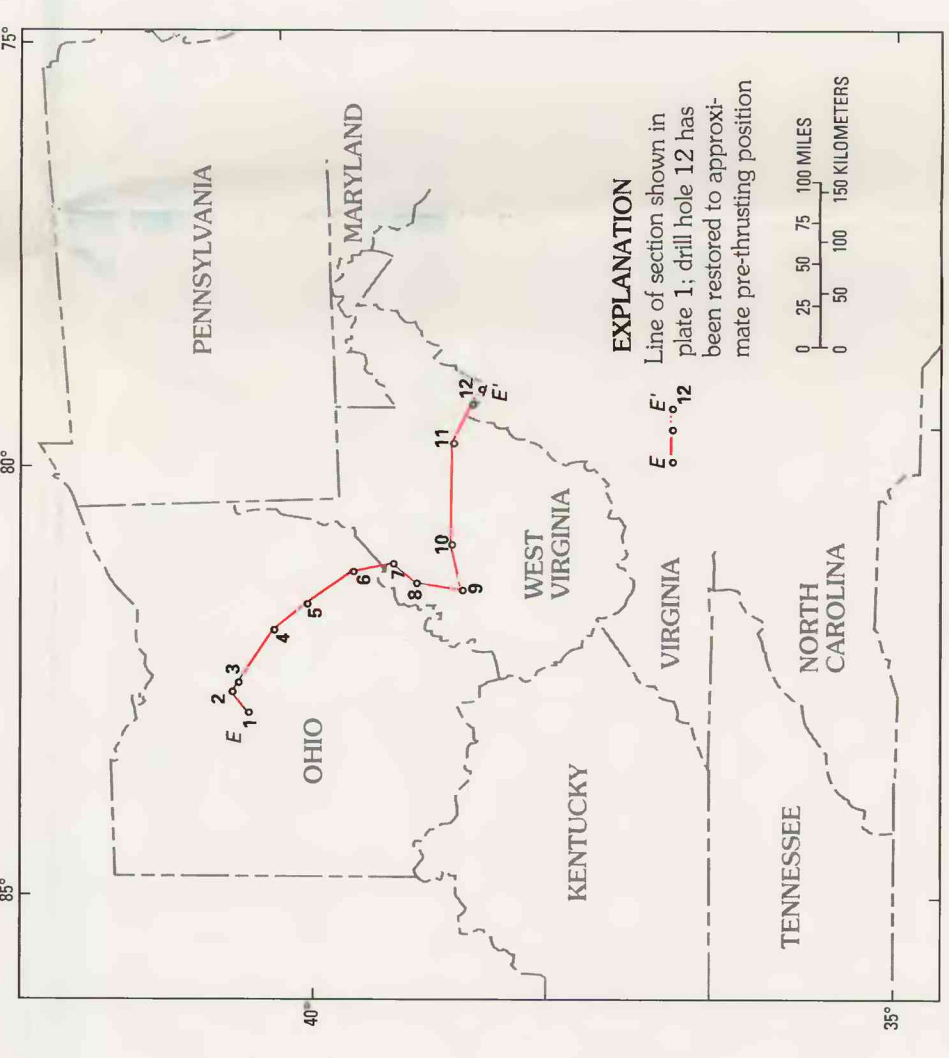
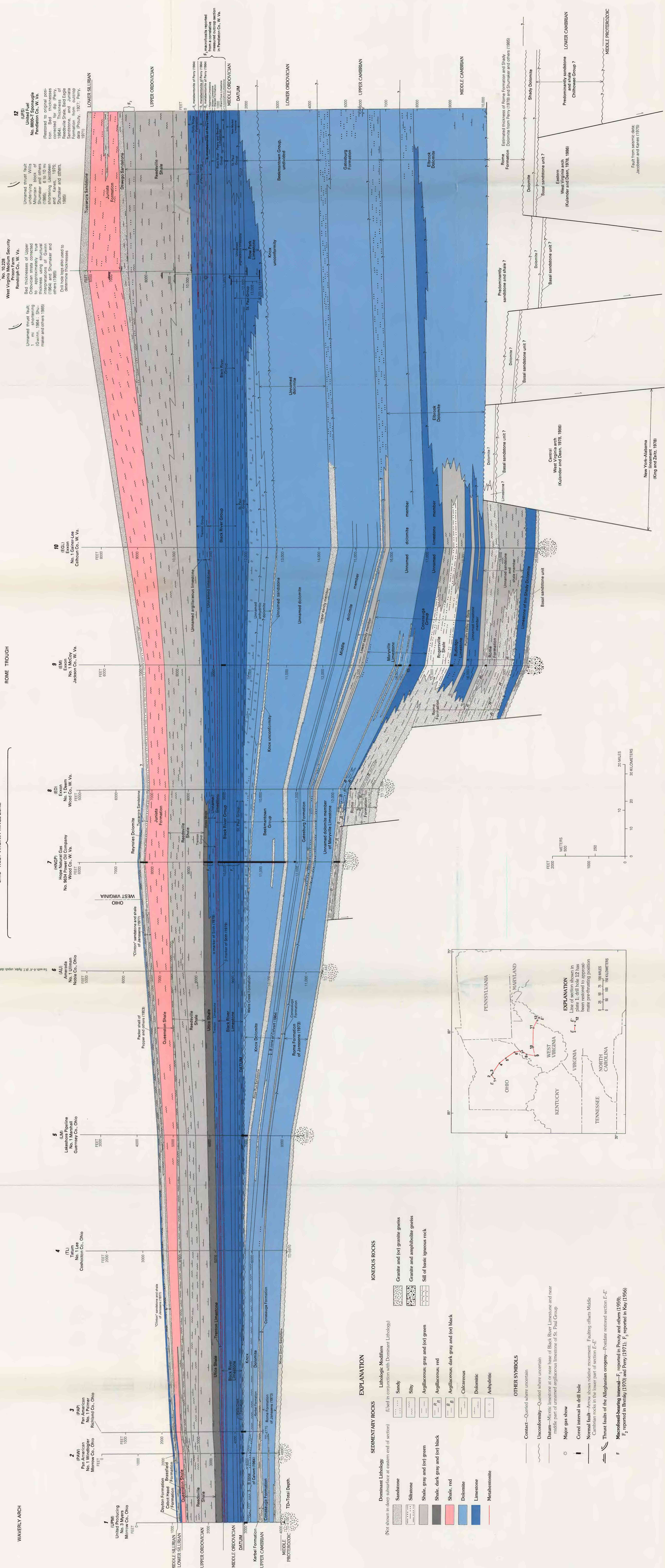


NW
E

SE
E'

ALLEGHENY STRUCTURAL FRONT

OHIO - WEST VIRGINIA HINGE ZONE



RESTORED STRATIGRAPHIC SECTION E-E' FROM MORROW COUNTY, OHIO, TO PENDLETON COUNTY, WEST VIRGINIA, SHOWING CAMBRIAN AND ORDOVICIAN SEQUENCE