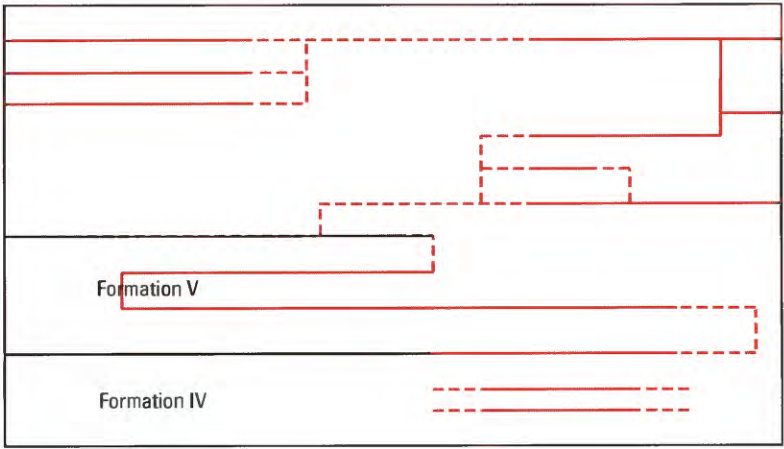
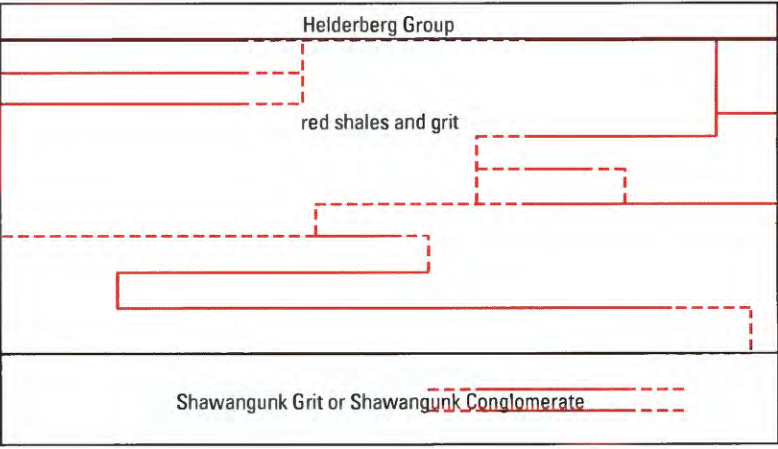


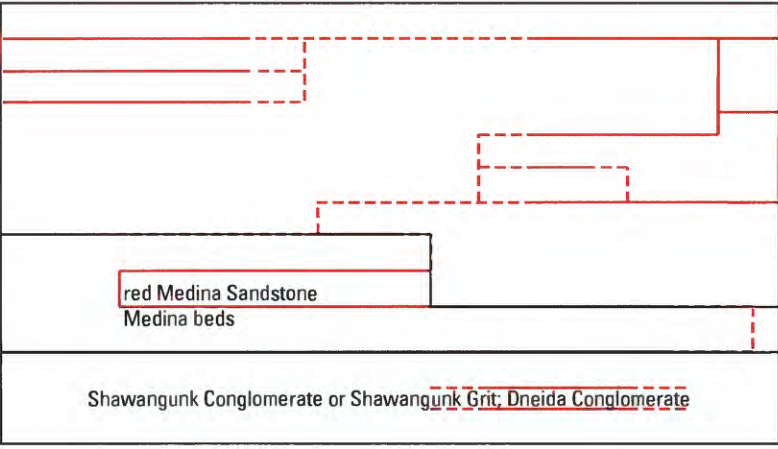
This report



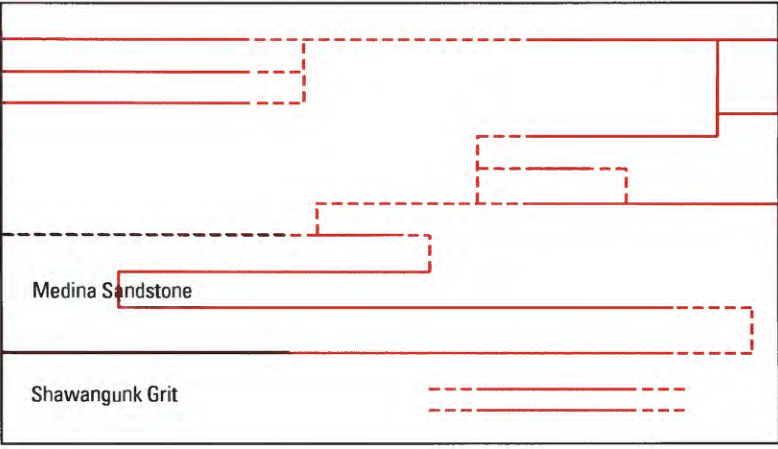
A. Rogers (1840)



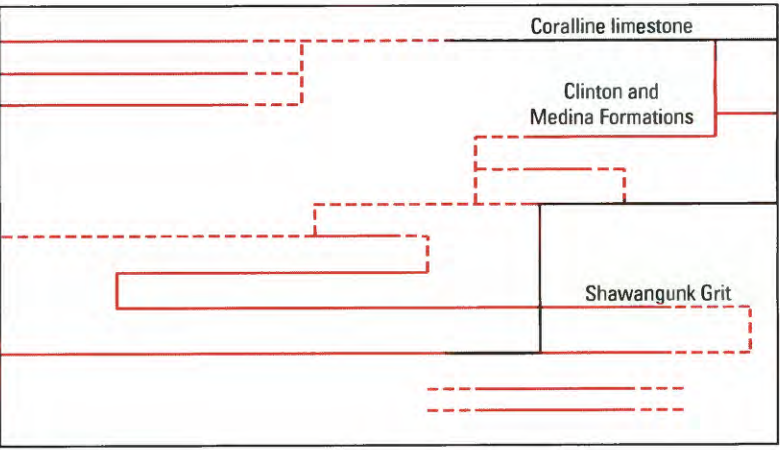
B. Mather (1843)



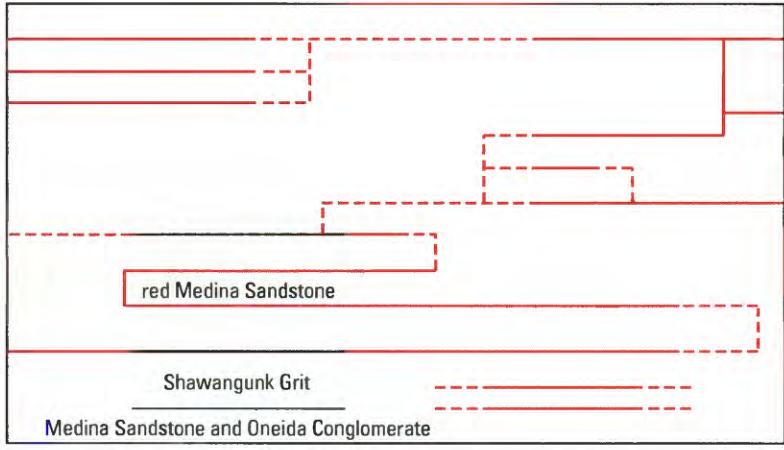
C. Cook (1868); Lesley (1892)



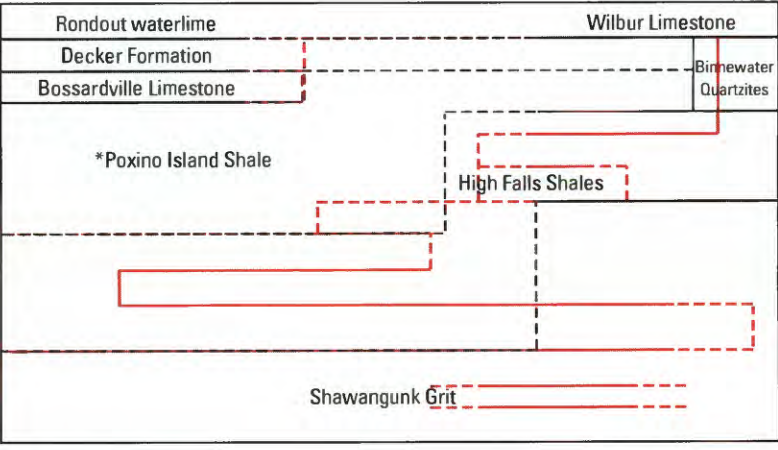
D. Barrett (1876)



E. Darton (1894a,b)

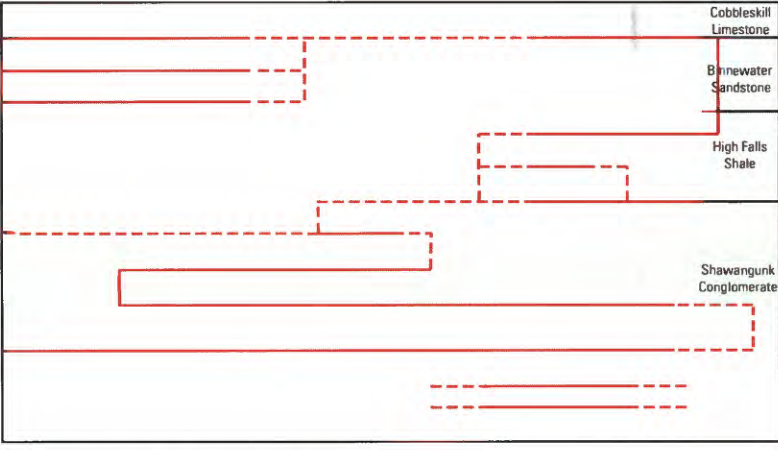


F. Ries (1897)

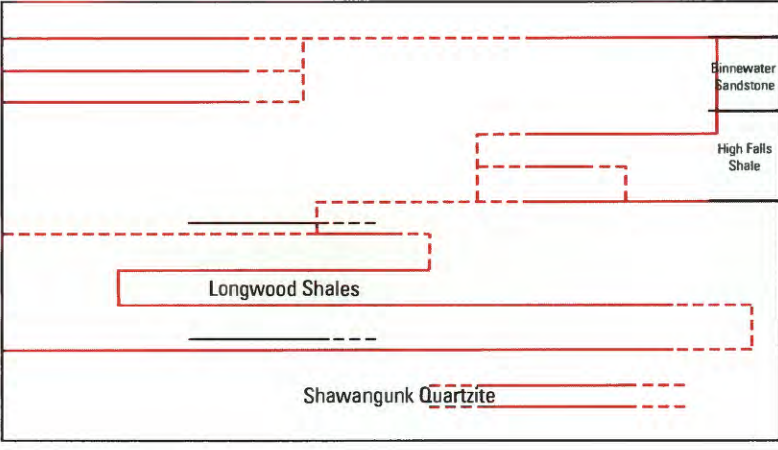


G. Hartnagel (1905)

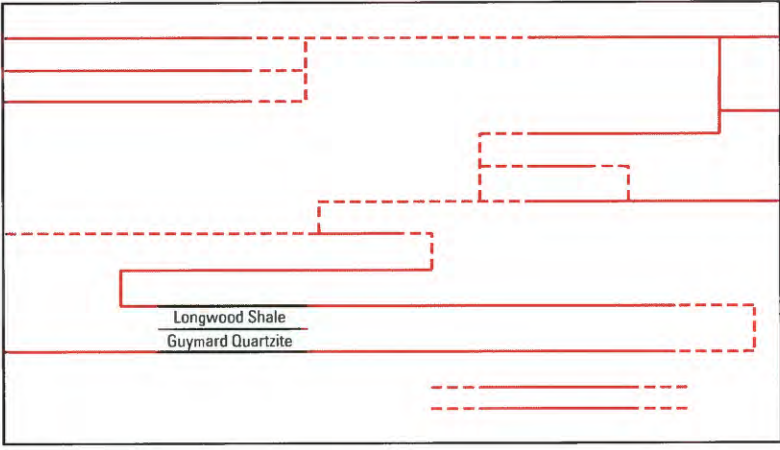
*Poxono Island



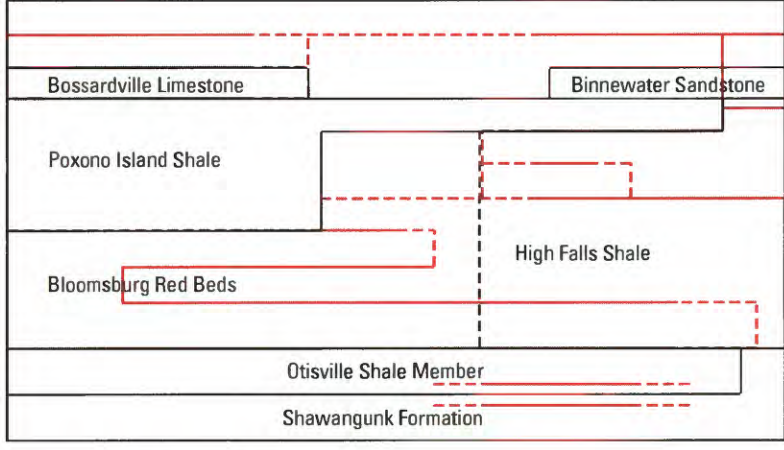
H. Berkey (1911); Brown (1914)



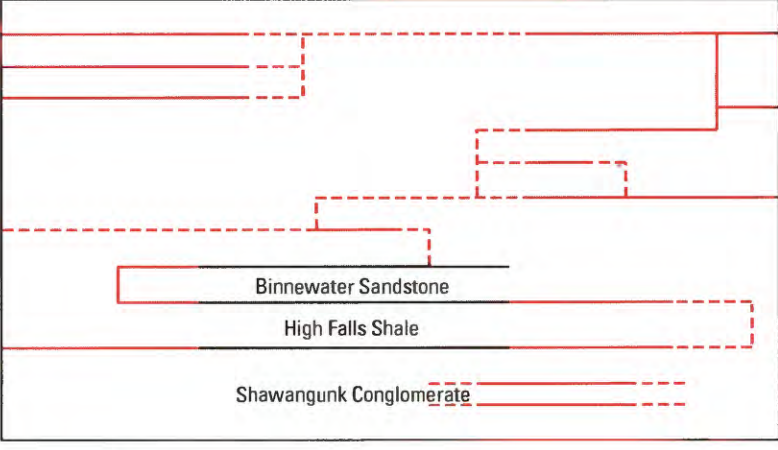
I. Schuchert (1916)



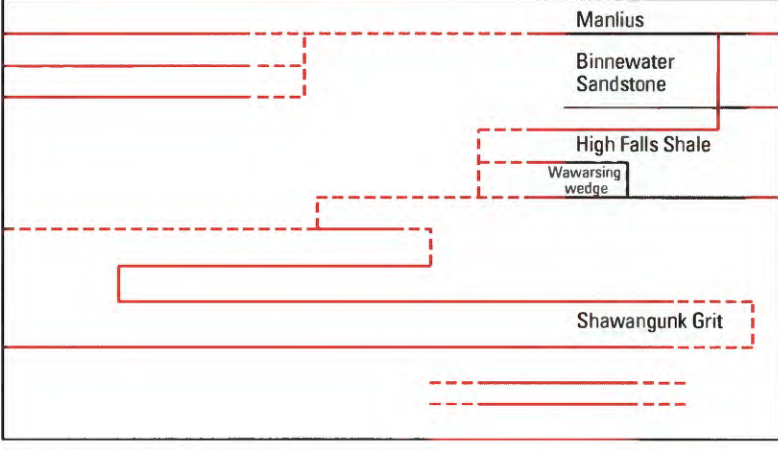
J. Bryant (1926)



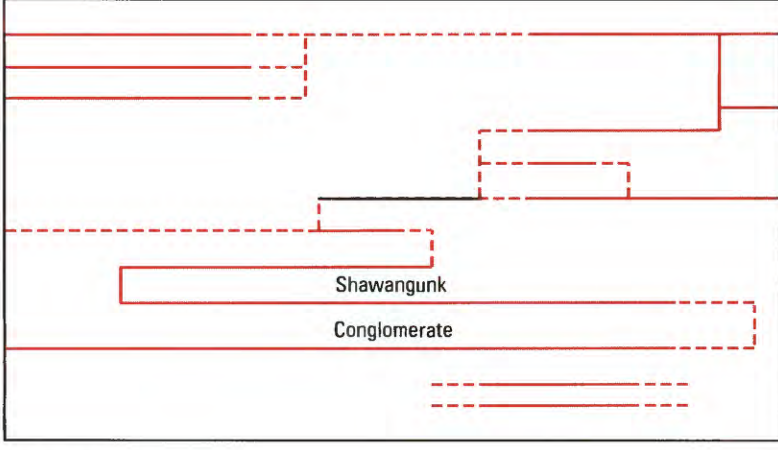
K. Swartz and Swartz (1931)



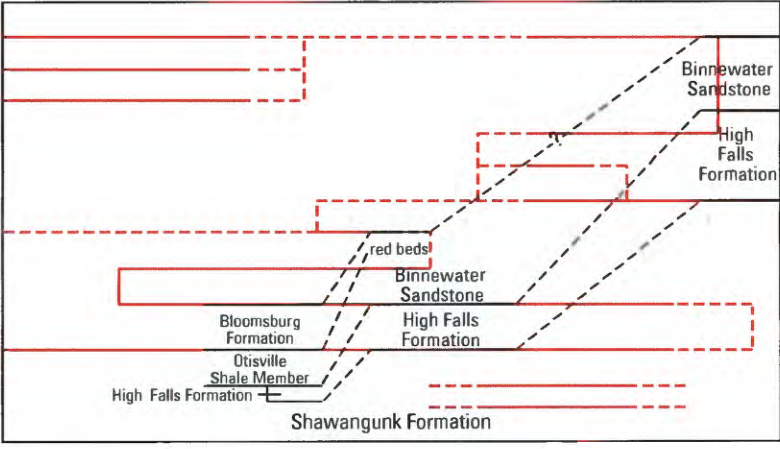
L. Ingham (1940)



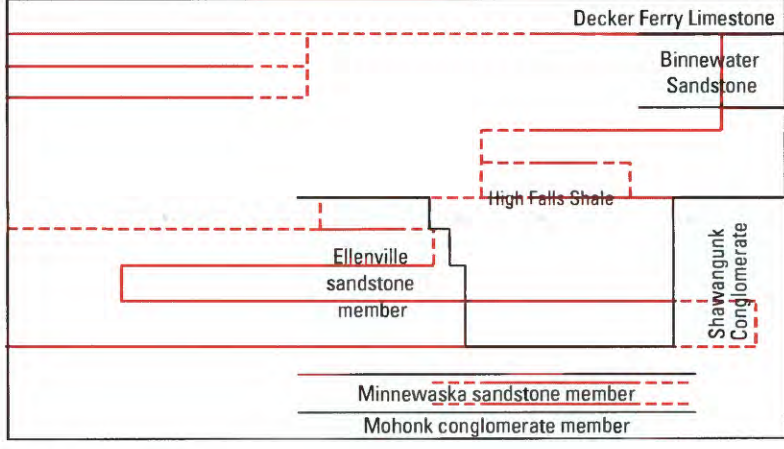
M. Bird (1941); Freund (1941, 1942);
New York City Water Board (unpub. report, 1945)



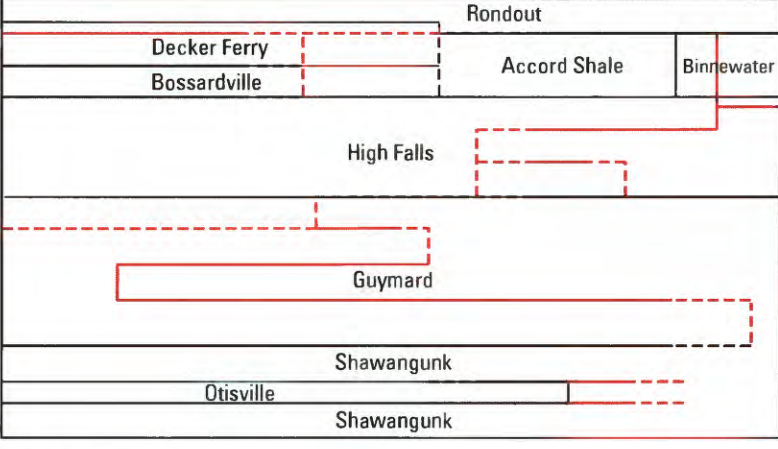
N. Sims and Hotz (1951)



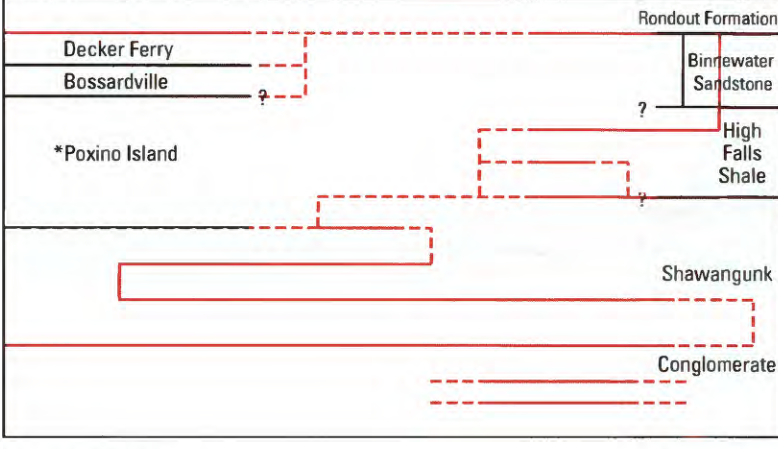
O. Gray (1953, 1961)



P. Friedman (1957)

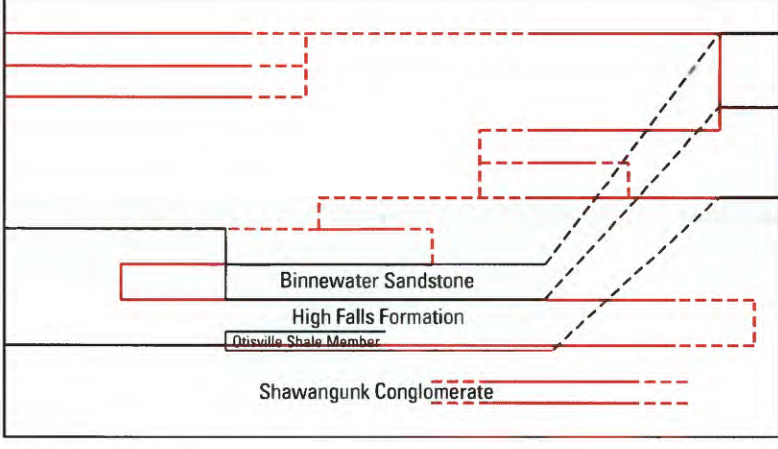


Q. Fisher (1959)

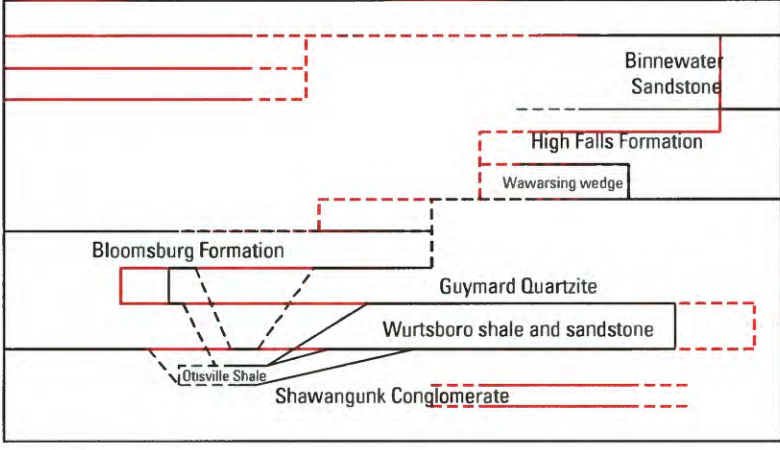


R. Rickard (1962)

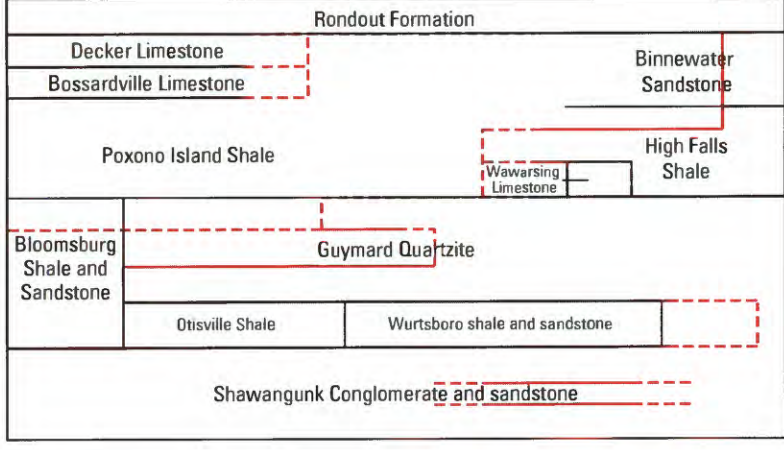
*Poxono Island



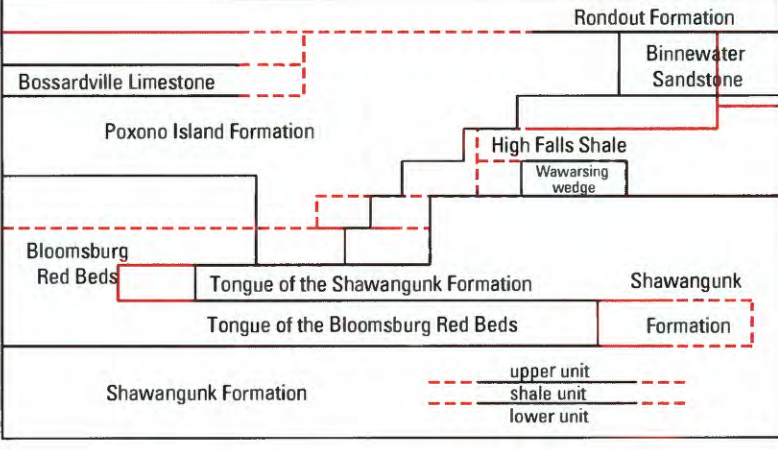
S. Smith (1967 a)



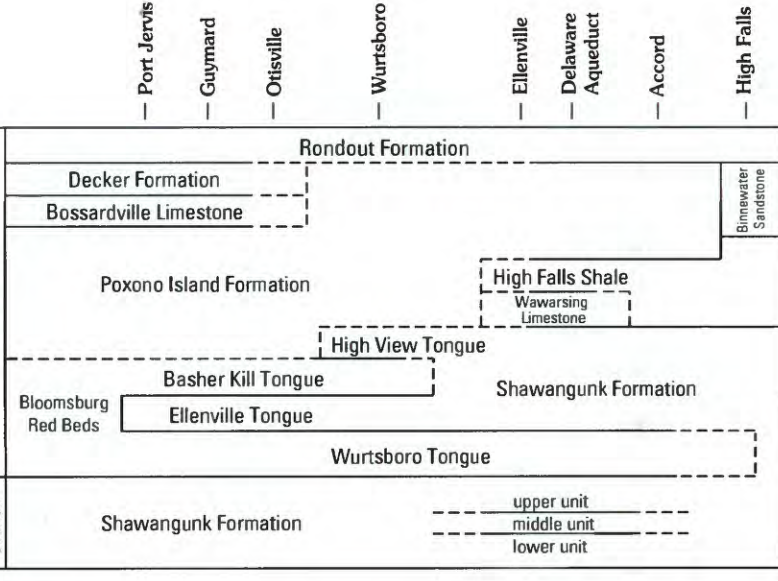
T. Smith (1967b)



U. Rickard (1975)



V. Epstein and Lytle (1987); Epstein (1989); Prave and others (1989)



W. This report

Names are as used by the original authors and do not imply present-day usage. The first and last boxes show the present stratigraphic interpretation (also shown in fig. 3). The position of the names used by previous workers overlap with that of the present study (as shown by the red lines) so that the interpretation of each author can be exactly compared. Dashed lines are contacts that are inferred because of burial by surficial deposits, because of uncertainty of the interpretations of previous workers, or because previous workers may have miscorrelated a rock unit. The Silurian rocks unconformably overlie the Martinsburg Formation of Ordovician age. The Martinsburg has been called the Hudson River Formation, Hudson River Shales, and Cincinnati Group by some earlier workers.

NOMENCLATURAL DEVELOPMENT OF SILURIAN SILICICLASTIC AND OVERLYING CARBONATE ROCKS IN SOUTHEASTERN NEW YORK