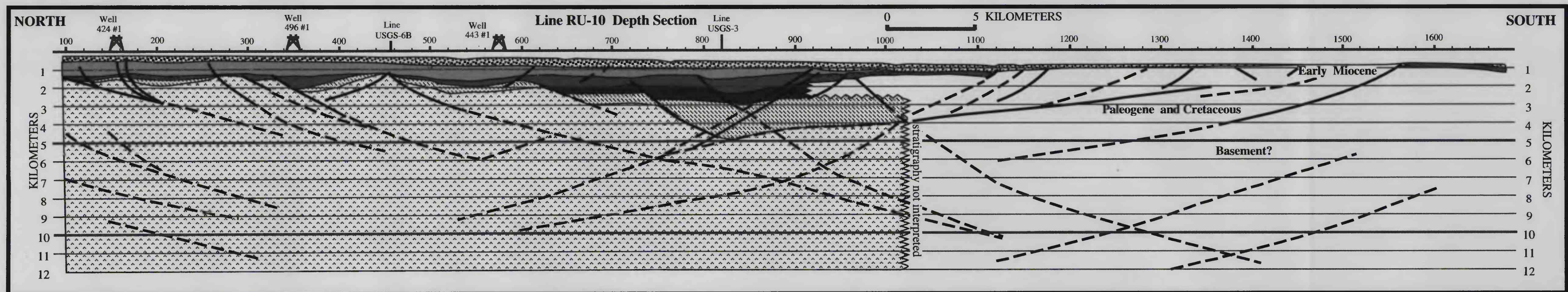
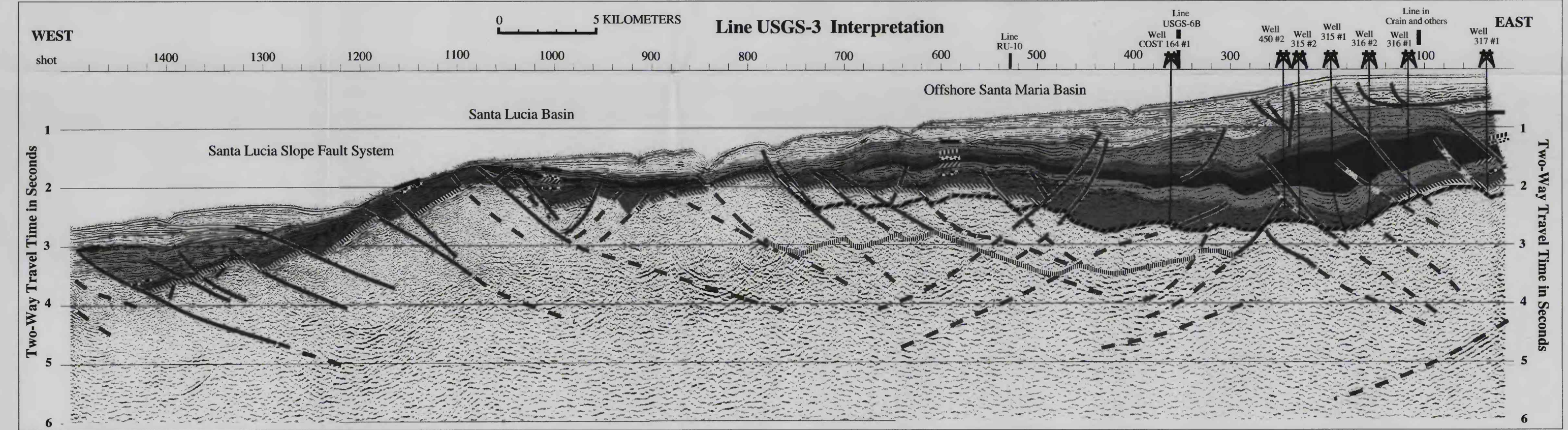
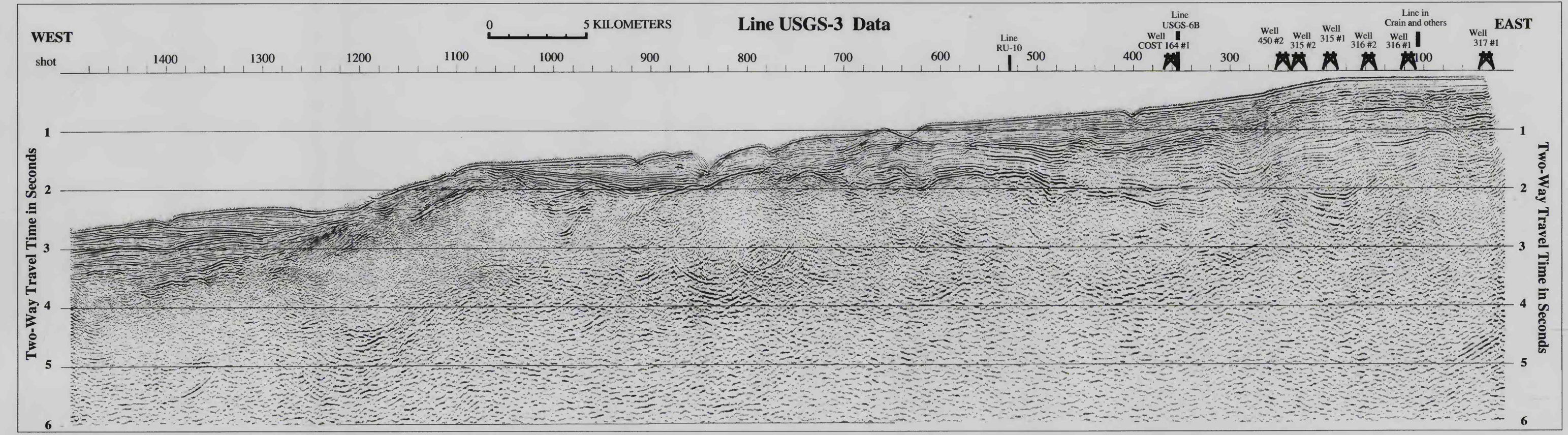


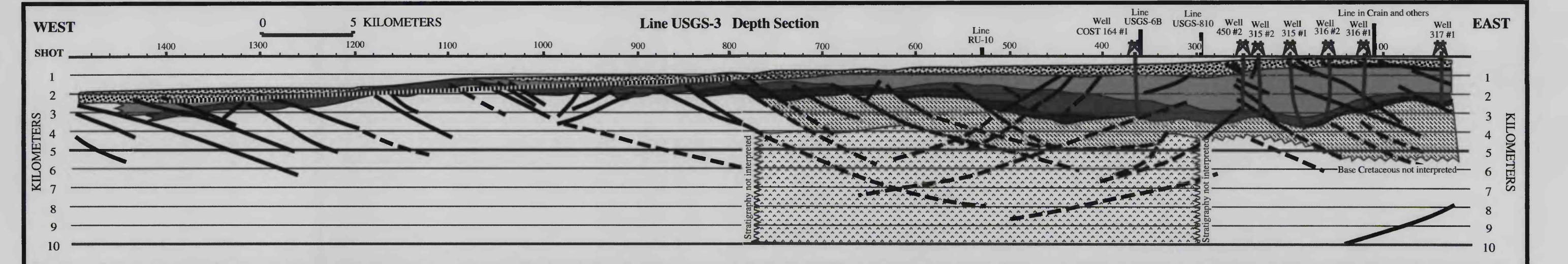
Data and interpretation of RU-10. The display is variable area, no wiggle. The wells shown were tied directly to RU-10 via USGS-103, USGS-48, and industry profiles. The reflection profiles on this plate are shown at the same scale except the wiggle data of USGS-3; vertical exaggeration is 1:1 at 6 km/s interval velocity. M= multiple.



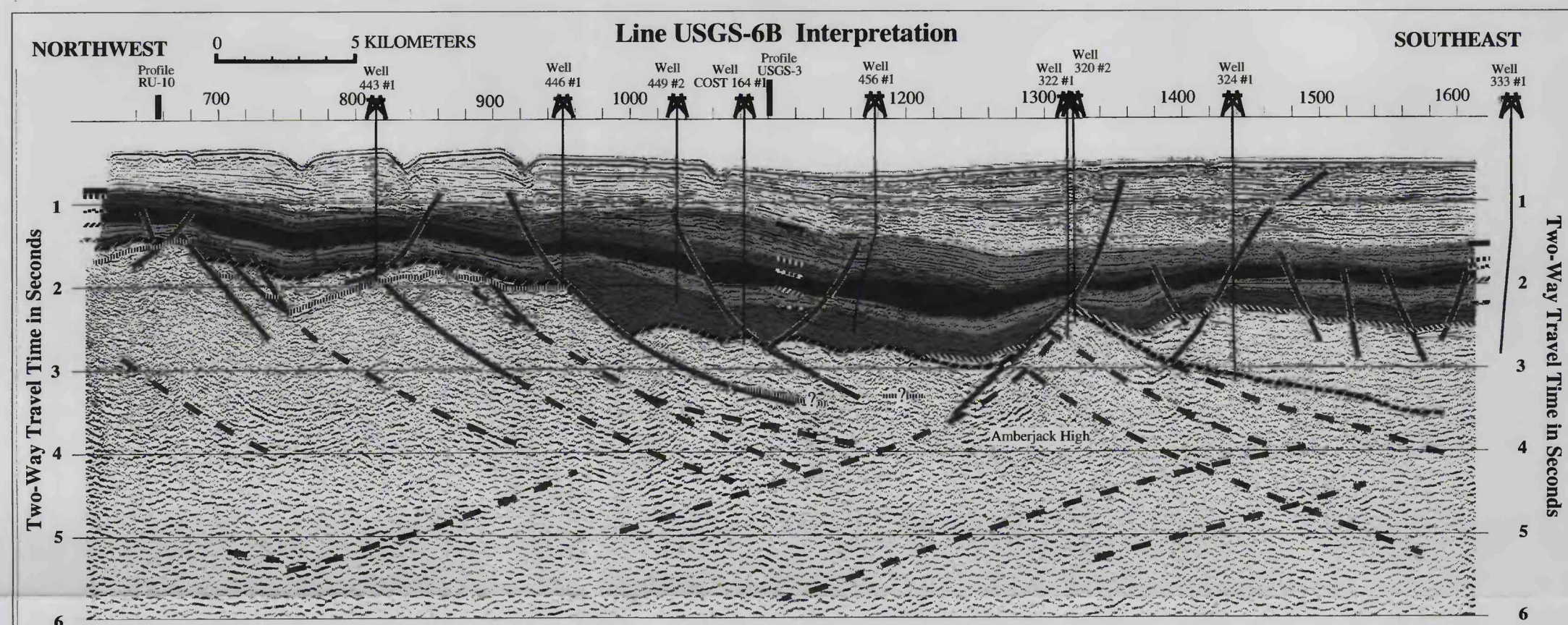
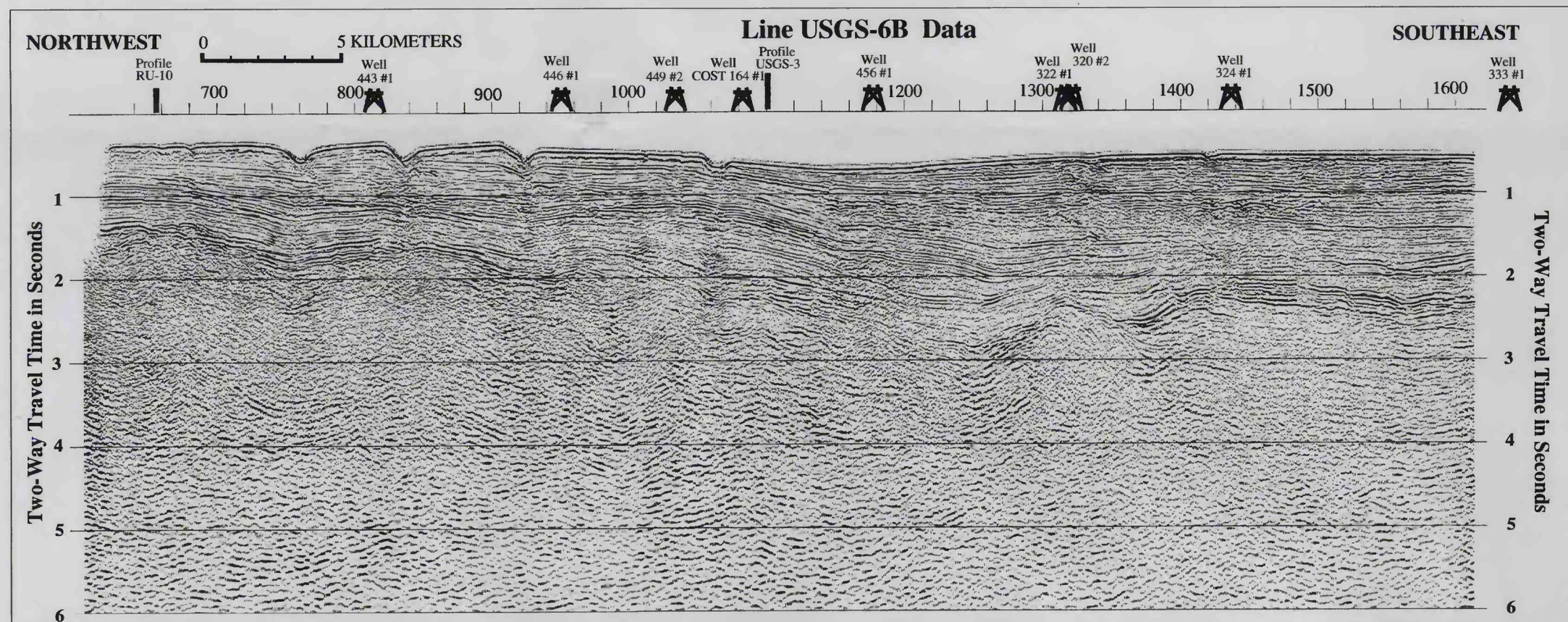
RU-10 depth section, no vertical exaggeration. The depth sections are constructed from depth migrated reflection data.



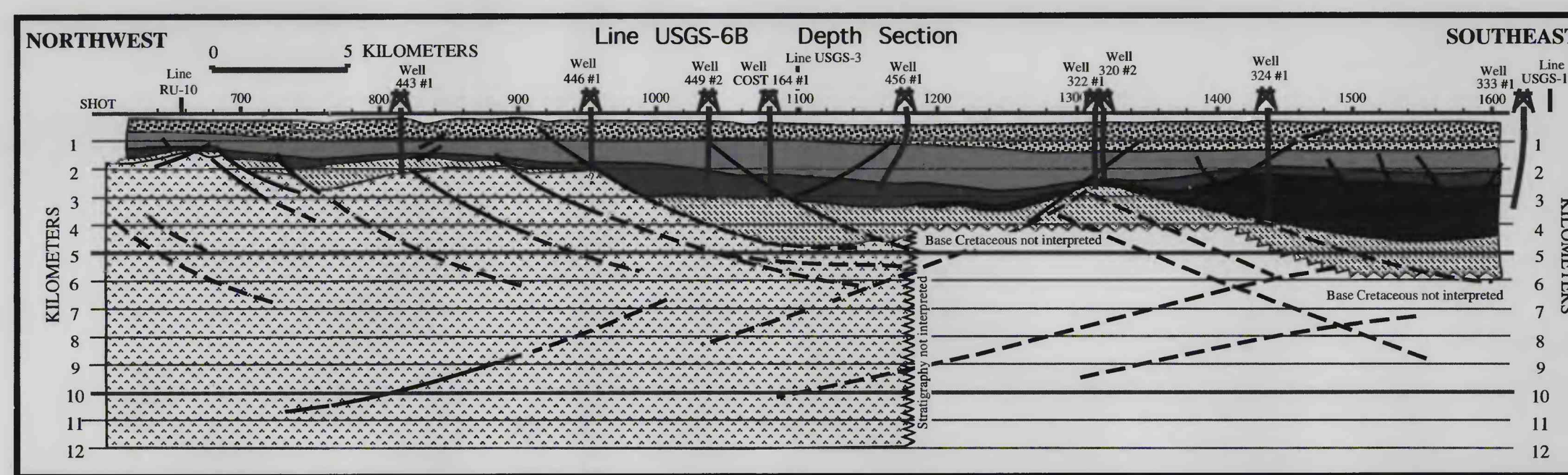
Data and interpretation of USGS-3. The West Basin fault is near S.P. 800, the COST well is the western well, and the rest of the wells are in the Pt. Arguello oil field. The well deviation is projected into the plane of the section, wells are converted to time and placed on the section. Certain wells are a significant distance (3 km) from the profile (Fig. 2) or have limited stratigraphic information (see Table 1). In interpretation, dip is taken into account for formation tops on wells located off of the section.



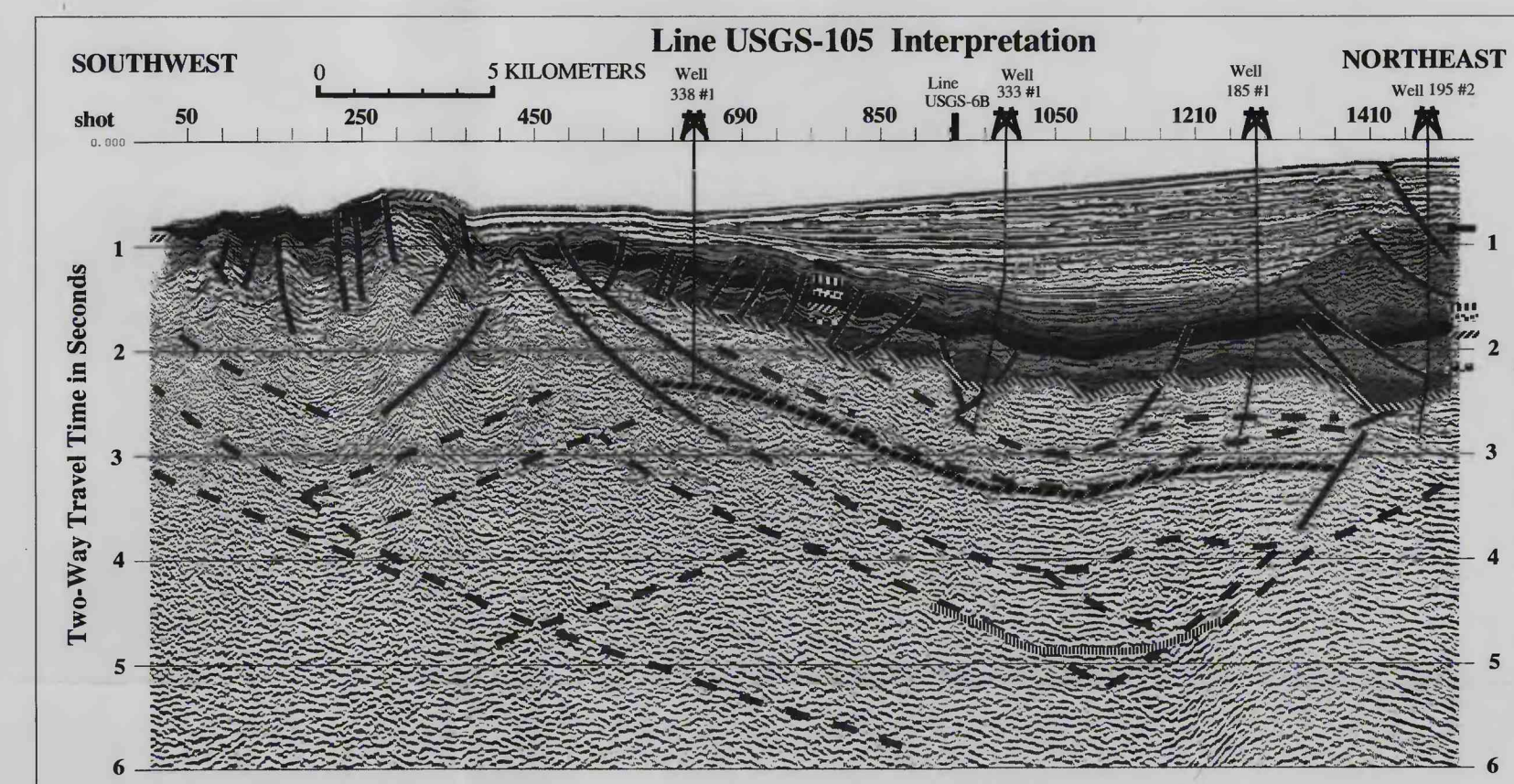
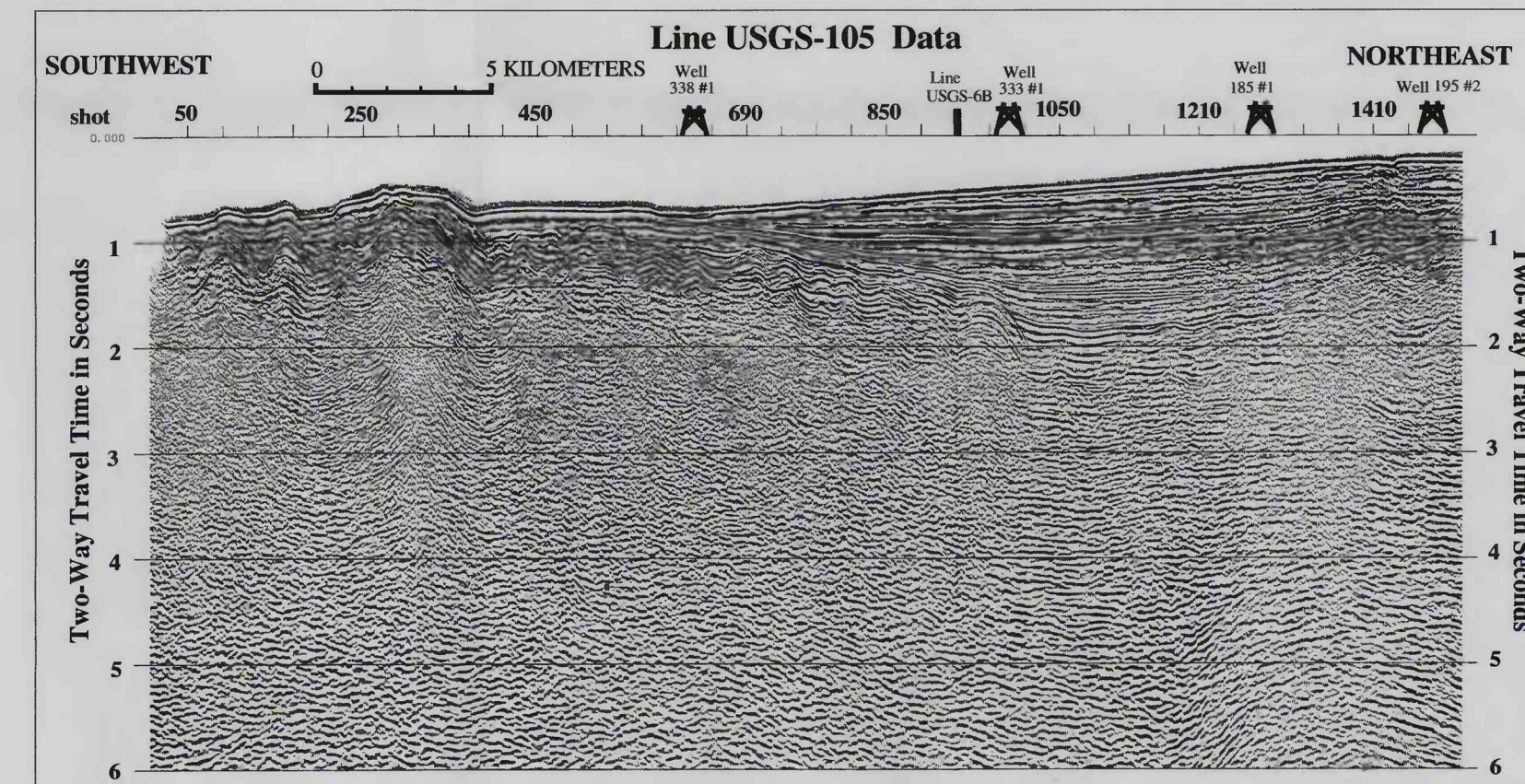
Depth section of USGS-3 with no vertical exaggeration.



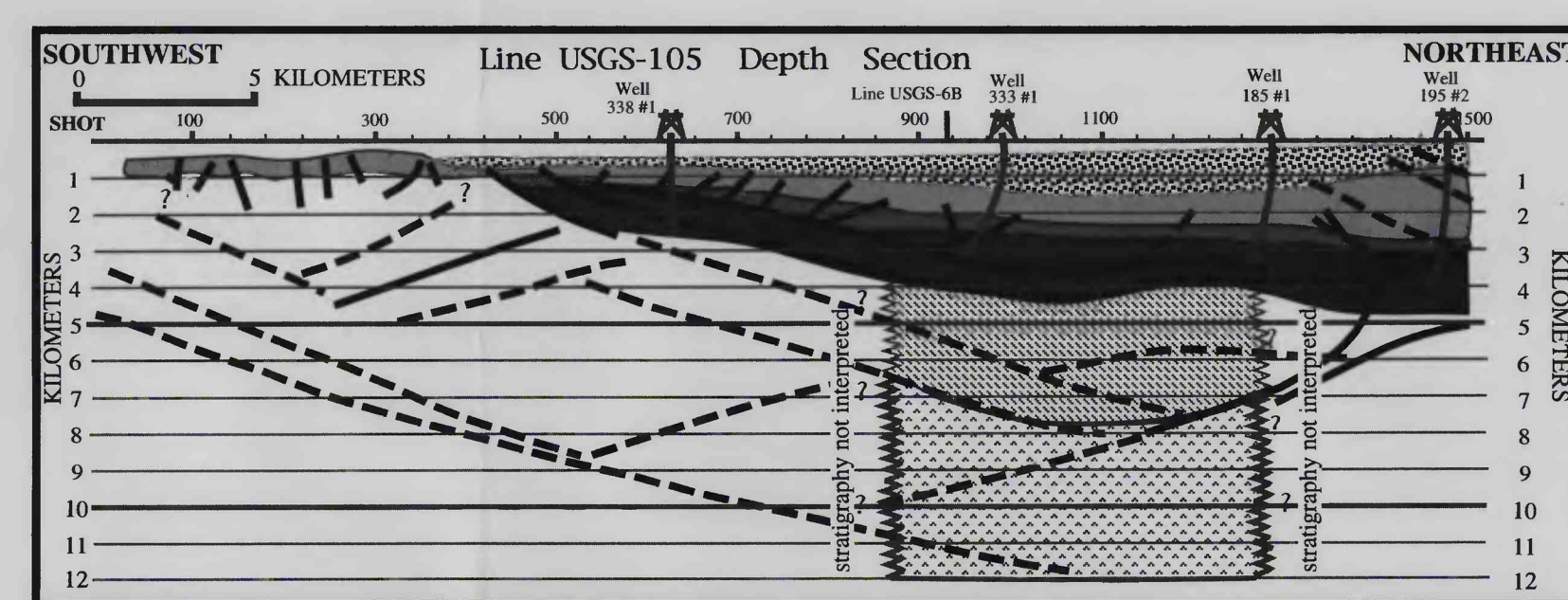
Data and interpretation of USGS-6B.



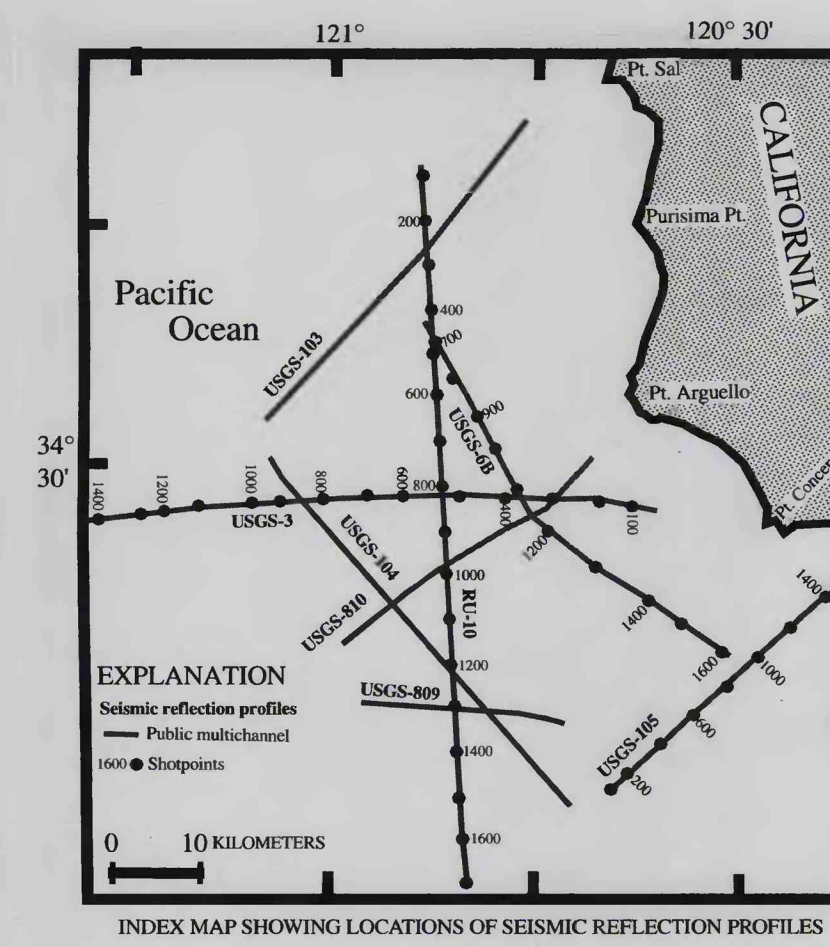
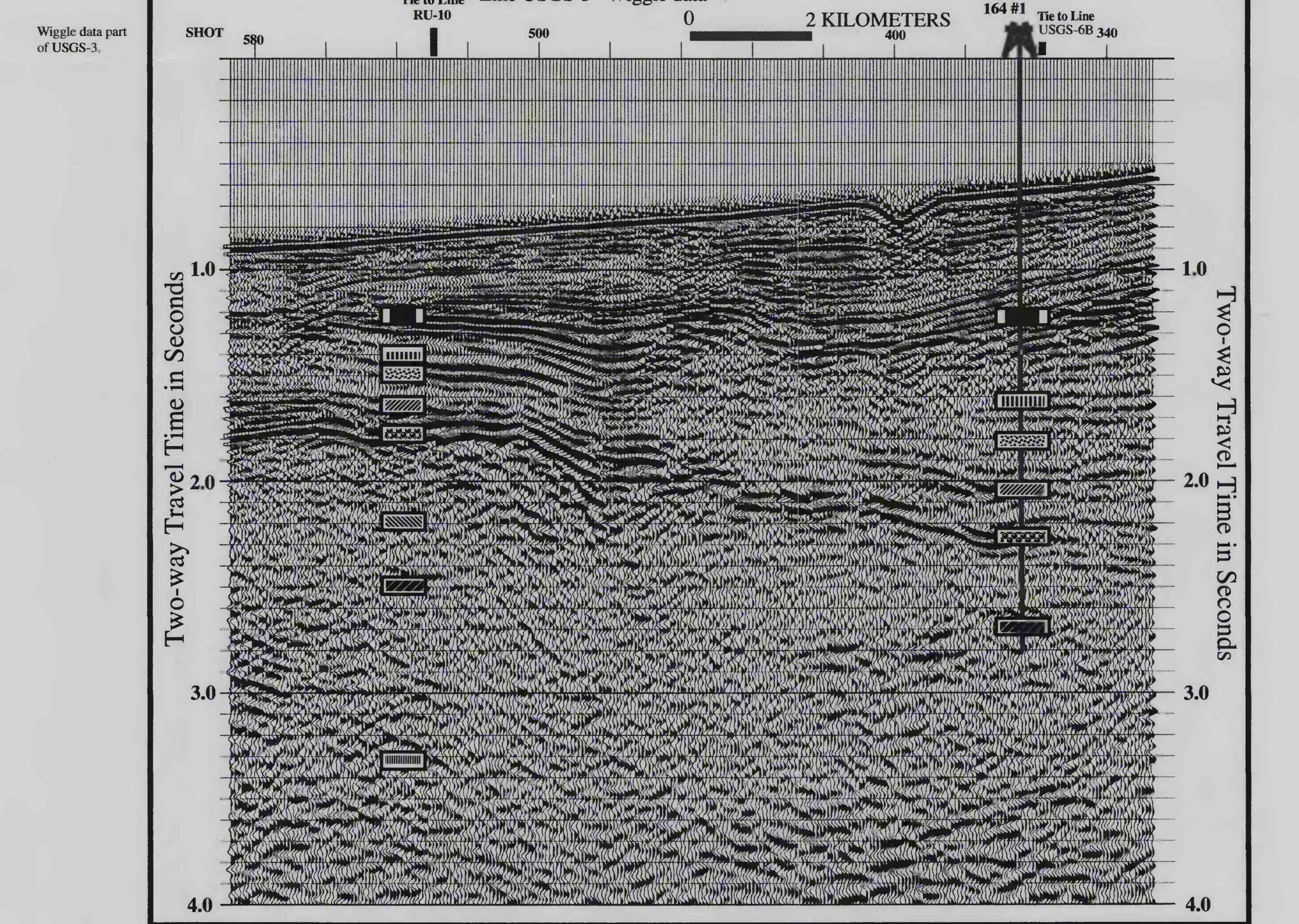
Depth section of USGS-6B with no vertical exaggeration.



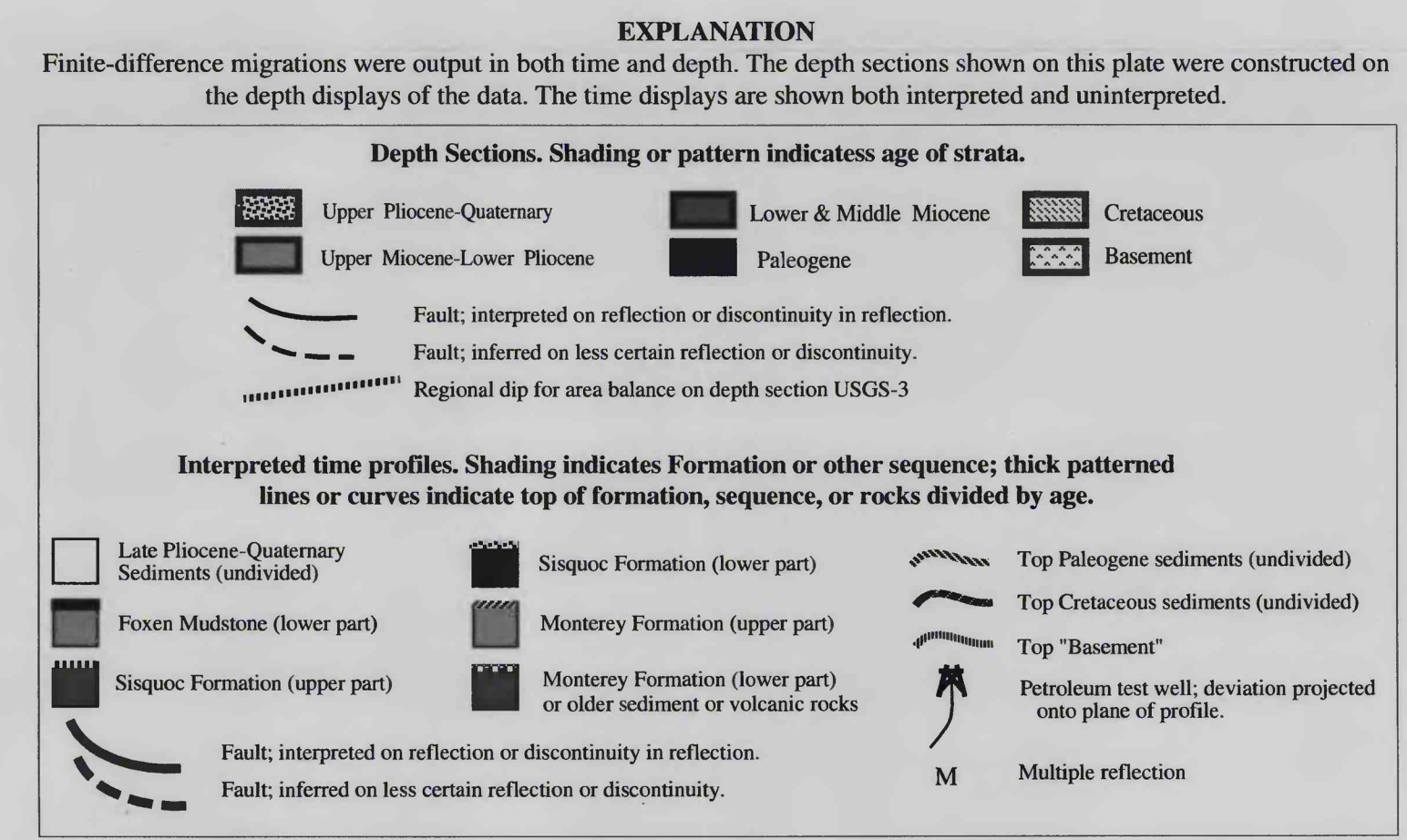
Data and interpretation of USGS-105. The vertical exaggeration is the same as for previous time profiles, or 1:1 at 6 km/s interval velocity. Less stratigraphic information was available for the two northeastern wells than for the other two wells (see Table 1).



Depth section of USGS-105, no vertical exaggeration.



EXPLANATION
Seismic reflection profiles
Public reflection profile
Seisquake
Fault, interpreted on reflection or discontinuity in reflection.
Fault, inferred on less certain reflection or discontinuity.
Regional dip for area balance on depth section USGS-3



SEISMIC REFLECTION PROFILES, OFFSHORE SOUTH-CENTRAL CALIFORNIA

By
Christopher C. Sorlien, Craig Nicholson, and Bruce P. Luyendyk