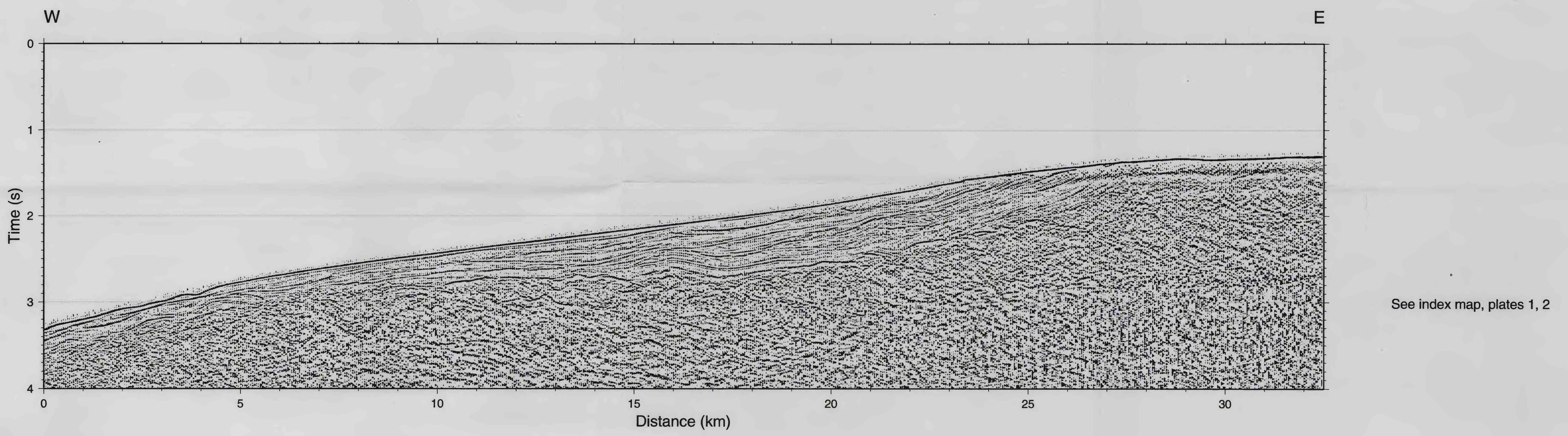
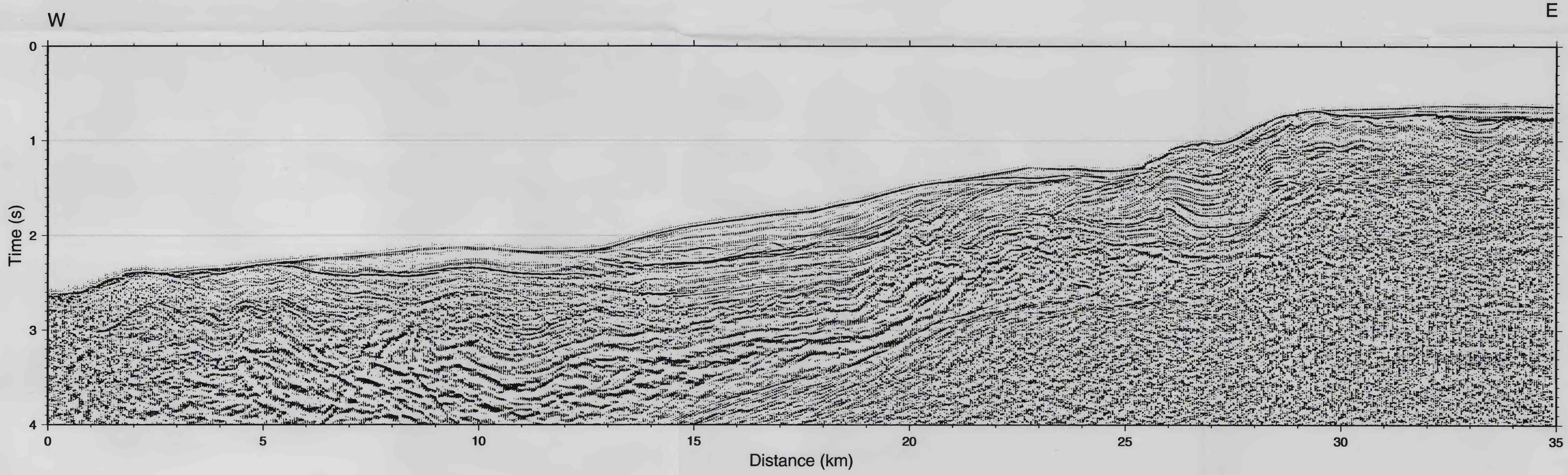


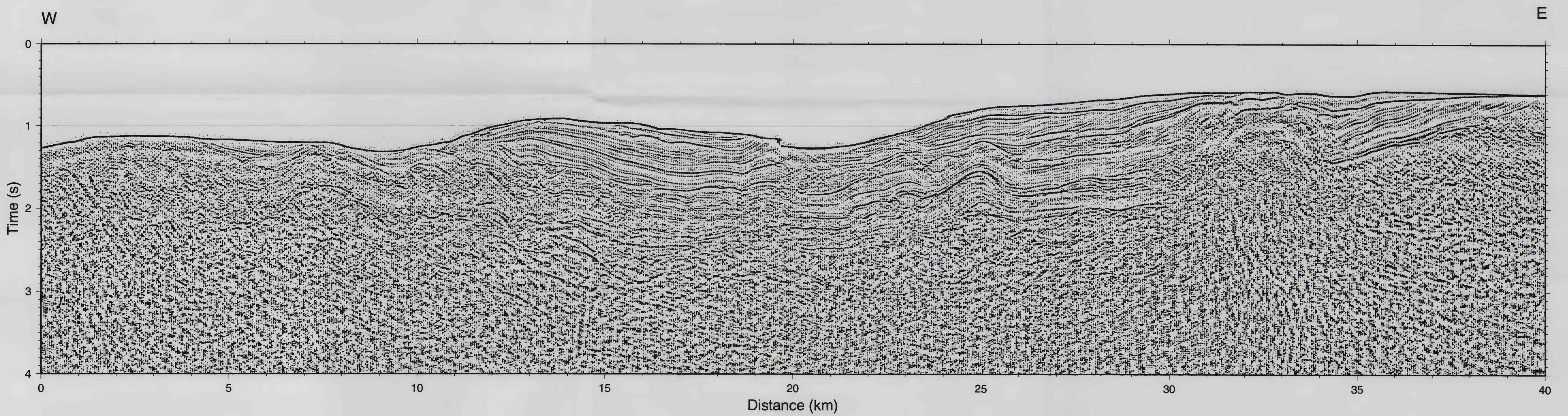
A. RU-13



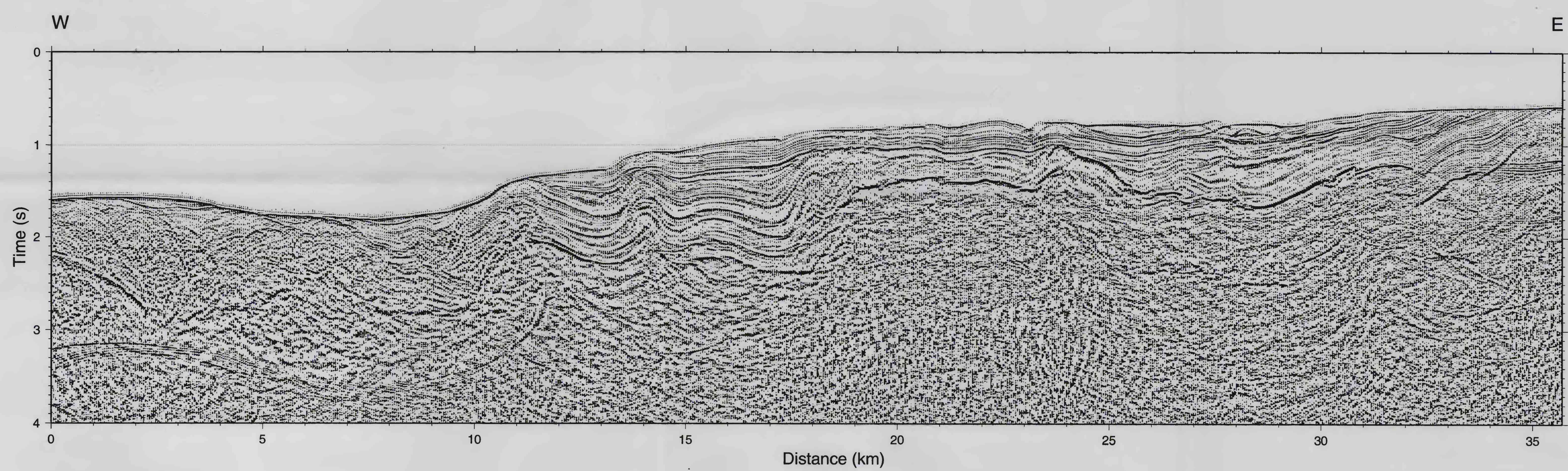
B. PG&E-1



C. RU-3



D. PG&E-3



Vertical exaggeration -2:1, assuming
velocity of 2,300 m/s

INTERIOR - GEOLOGICAL SURVEY, RESTON, VA - 1999
Miller, K. C., and Meltzer, A. S., Structure and
tectonics of the offshore Santa Maria and Santa Lucia
basins, central California: results from the
PG&E/EDGE seismic reflection survey, chapter Z of
Keller, M. A., ed., Evolution of sedimentary
basins: offshore oil and gas investigations - Santa
Maria province. U.S. Geological Survey Bulletin 1995.

**UNINTERPRETED MIGRATED SEISMIC REFLECTION DATA FOR
OFFSHORE SANTA MARIA BASIN TRANSECTS, CALIFORNIA**

By

Kate C. Miller and Anne S. Meltzer

1999