

AP 43-015-10828
Pan American Petroleum Co.
Superior Oil Co. No. 3
Sec. 25, T. 26 S., R. 13 E.
Emery Co., Utah
Plugged and abandoned, July 16, 1962
Key Building 53141

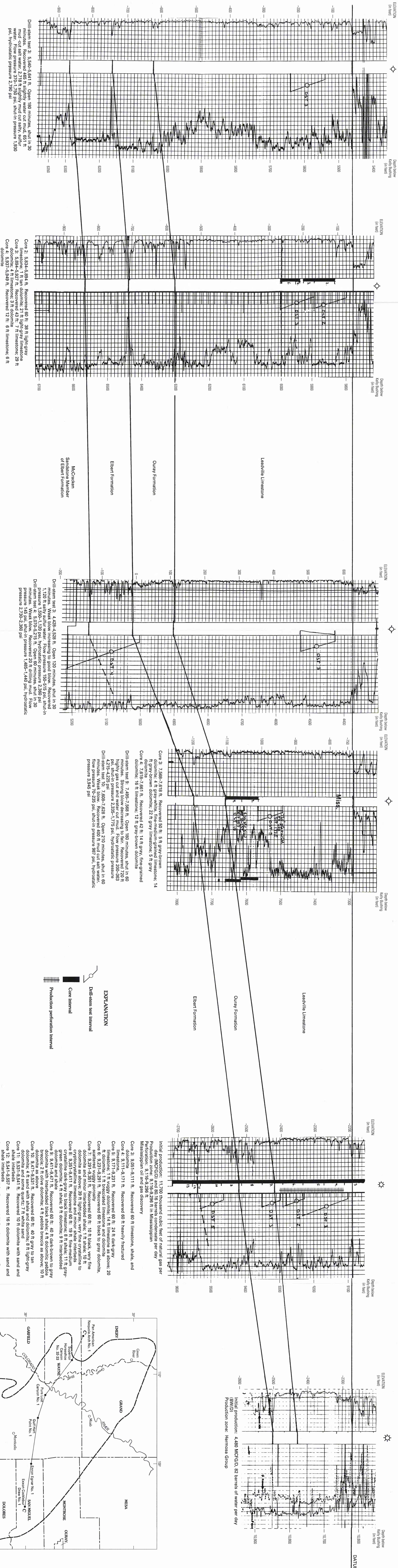
AP 43-055-12110
Superior Oil Co.
Superior Oil Co. No. 33-33
Sec. 33, T. 27 S., R. 16 E.
Wayne Co., Utah
Plugged and abandoned, 5/22/61
Key Building 52287

AP 43-037-11355
Lor Cur Oil Co.
Lor Cur Oil Co. No. 1
Sec. 19, T. 30 S., R. 20 E.
San Juan Co., Utah
Plugged and abandoned, 5/23/61
Key Building 50097

AP 43-037-10438
Hart Pool Petroleum Co.
Hart Pool Petroleum Co. No. 1
Sec. 8, T. 31 S., R. 22 E.
San Juan Co., Utah
Plugged and abandoned, 6/5/61
Key Building 65587

AP 05-113-05012
Emery Oil Co.
Emery Oil Co. No. 1
Sec. 30, T. 44 N., R. 19 W.
San Miguel Co., Colo.
Completed, 6/8/61
Key Building 6387

AP 05-113-06051
Cochran Oil Co.
Cochran Oil Co. No. 1
Sec. 21, T. 43 N., R. 15 W.
San Miguel Co., Colo.
Completed, 6/26/1965
Key Building 83487



Drill-stem test 3: 5,540-5,614 ft. Open 180 minutes, shut in 30 minutes. Recovered 60 ft. 24 ft. dark-gray limestone, 14 ft. vuggy dolomite, 14 ft. limestone as above, 20 ft. gray dolomite, 4 ft. shale, 9 ft. interbedded dolomite with interbedded black shale, 4 ft. dolomite pebbles breccia, 2 ft. olive dolomite, 4 ft. pebble breccia as above, 10 ft. gray dolomite. Recovered 60 ft. 40 ft. gray to tan dolomite, 4 ft. sand with shale and dolomite, 8 ft. light-gray dolomite, 4 ft. shale, 9 ft. dolomite with sand and shale interbeds. Recovered 60 ft. 10 ft. black, very fine dolomite as above, 39 ft. light-gray, very fine crystalline to porphyrocrystalline limestone and minor shale interbeds. Crystalline dark-gray to black limestone, 8 ft. shale, 11 ft. gray dolomite, 4 ft. shale, 9 ft. dolomite with sand and shale interbeds. Recovered 60 ft. 40 ft. gray to tan dolomite, 4 ft. sand with shale and dolomite, 8 ft. light-gray dolomite, 4 ft. shale, 9 ft. dolomite with sand and shale interbeds. Recovered 10 ft. dolomite with sand and shale interbeds. Recovered 10 ft. white crystalline dolomite.

Drill-stem test 2: 5,890-5,984 ft. Open 30 minutes, shut in 30 minutes. Recovered 60 ft. drilling mud. Flow pressure 65 psi, shut-in pressure 380-250 psi, hydrostatic pressure 3,225-3,220 psi. Drill-stem test 3: 5,984-5,994 ft. Open 40 minutes, shut in 30 minutes. Good blow immediately, decreased. Recovered 580 ft. brackish-mud-cut water, 265 ft. brackish water. Flow pressure 2,975 psi, initial flow pressure 2,560 psi, final flow pressure 1,486 psi, shut-in pressure 1,250 psi, hydrostatic pressure 3,110 psi.

Drill-stem test 1: 9,101-9,231 ft. Open 60 minutes, shut in 45 minutes. Recovered 5 ft. mud. Initial shut-in pressure 70 psi, shut-in pressure 59 psi, hydrostatic pressure 4,866-4,790 psi. Drill-stem test 2: 9,289-9,281 ft. Open 60 minutes, shut in 45 minutes. Recovered 5 ft. mud. Initial shut-in pressure 80 ft. slightly salty water and gas cut mud. Initial shut-in pressure 3,022 psi, initial flow pressure 2,700 psi, hydrostatic pressure 9,050 psi.

Drill-stem test 4: Failed. Drill-stem test 5: Failed. Drill-stem test 6: Failed. Drill-stem test 7: Failed. Drill-stem test 8: Failed. Drill-stem test 9: Failed. Drill-stem test 10: Failed. Drill-stem test 11: Failed. Drill-stem test 12: Failed. Drill-stem test 13: Failed. Drill-stem test 14: Failed. Drill-stem test 15: Failed. Drill-stem test 16: Failed. Drill-stem test 17: Failed. Drill-stem test 18: Failed. Drill-stem test 19: Failed. Drill-stem test 20: Failed.

Initial production: 11,700 thousand cubic feet of natural gas per acre-foot. Production cost: \$115.00 per barrel. Initial production: 4,480 MCFG/D, 82 barrels of water per day. Production zone: Hermosa Group.

EXPLANATION
Drill-stem test interval
Core interval
Production perforation interval

CROSS SECTION C-C' SHOWING THICKENING OF THE LEADVILLE LIMESTONE IN A WESTERLY DIRECTION ACROSS THE CENTRAL PART OF THE PARADOX BASIN, COLORADO AND UTAH

By
James A. Cappa
1995

