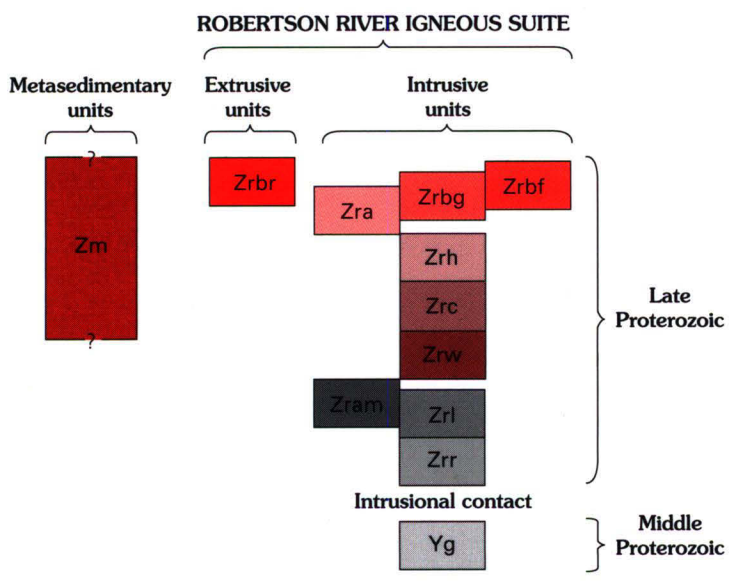


**CORRELATION OF MAP UNITS**

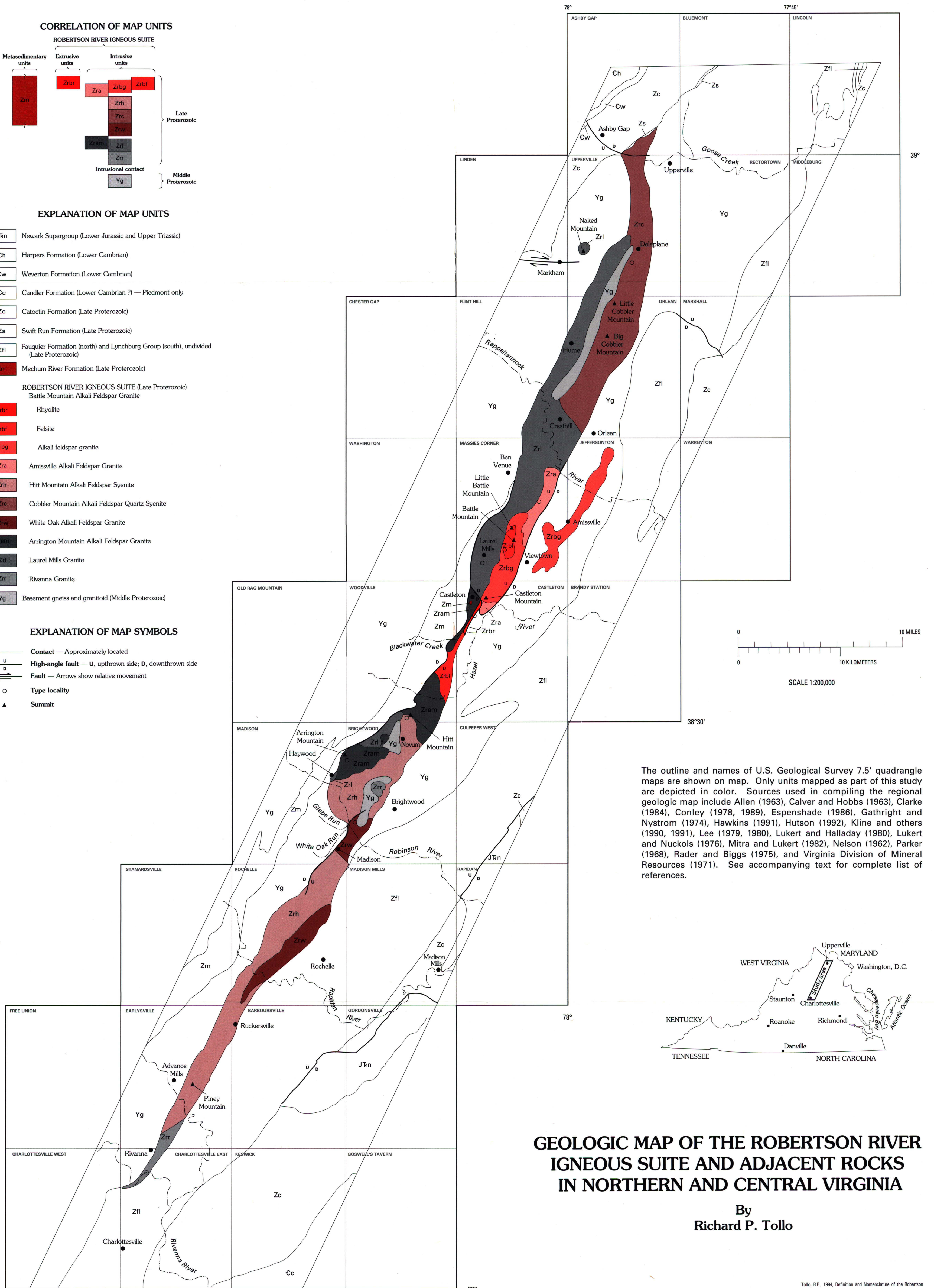


**EXPLANATION OF MAP UNITS**

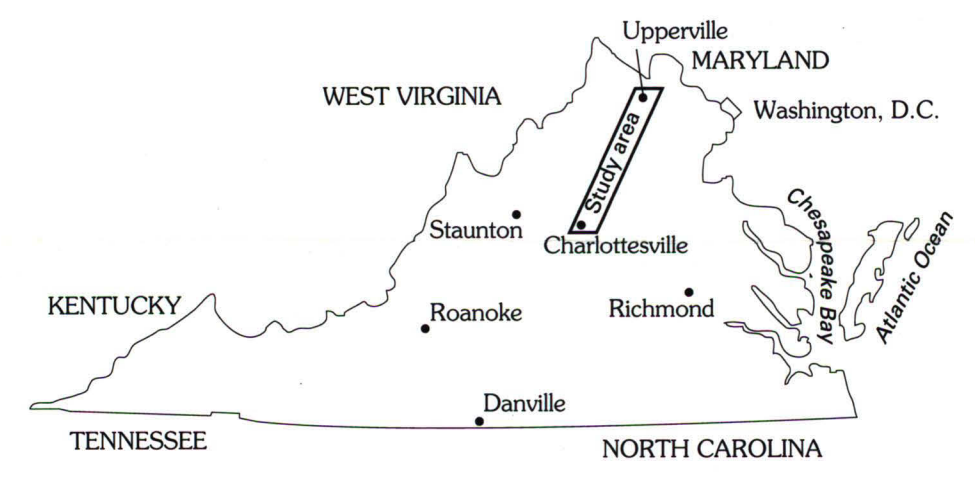
- Jrn Newark Supergroup (Lower Jurassic and Upper Triassic)
- Ch Harpers Formation (Lower Cambrian)
- Cw Weverton Formation (Lower Cambrian)
- Cc Candler Formation (Lower Cambrian?) — Piedmont only
- Zc Catoclin Formation (Late Proterozoic)
- Zs Swift Run Formation (Late Proterozoic)
- Zfl Fauquier Formation (north) and Lynchburg Group (south), undivided (Late Proterozoic)
- Zm Mechum River Formation (Late Proterozoic)
- ROBERTSON RIVER IGNEOUS SUITE (Late Proterozoic)**  
Battle Mountain Alkali Feldspar Granite
- Zrbr Rhyolite
- Zrbf Felsite
- Zrbg Alkali feldspar granite
- Zra Amisville Alkali Feldspar Granite
- Zrh Hitt Mountain Alkali Feldspar Syenite
- Zrc Cobbler Mountain Alkali Feldspar Quartz Syenite
- Zrw White Oak Alkali Feldspar Granite
- Zram Arrington Mountain Alkali Feldspar Granite
- Zri Laurel Mills Granite
- Zrr Rivanna Granite
- Yg Basement gneiss and granitoid (Middle Proterozoic)

**EXPLANATION OF MAP SYMBOLS**

- Contact — Approximately located
- High-angle fault — U, upthrown side; D, downthrown side
- Fault — Arrows show relative movement
- Type locality
- Summit



The outline and names of U.S. Geological Survey 7.5' quadrangle maps are shown on map. Only units mapped as part of this study are depicted in color. Sources used in compiling the regional geologic map include Allen (1963), Calver and Hobbs (1963), Clarke (1984), Conley (1978, 1989), Espenshade (1986), Gathright and Nystrom (1974), Hawkins (1991), Hutson (1992), Kline and others (1990, 1991), Lee (1979, 1980), Lukert and Halladay (1980), Lukert and Nuckols (1976), Mitra and Lukert (1982), Nelson (1962), Parker (1968), Rader and Biggs (1975), and Virginia Division of Mineral Resources (1971). See accompanying text for complete list of references.



**GEOLOGIC MAP OF THE ROBERTSON RIVER IGNEOUS SUITE AND ADJACENT ROCKS IN NORTHERN AND CENTRAL VIRGINIA**

By  
**Richard P. Tollo**

Tollo, R.P., 1994. Definition and Nomenclature of the Robertson River Igneous Suite, Blue Ridge Province, Virginia. In *Stratigraphic Notes*, 1992. U.S. Geological Survey Bulletin 2060.