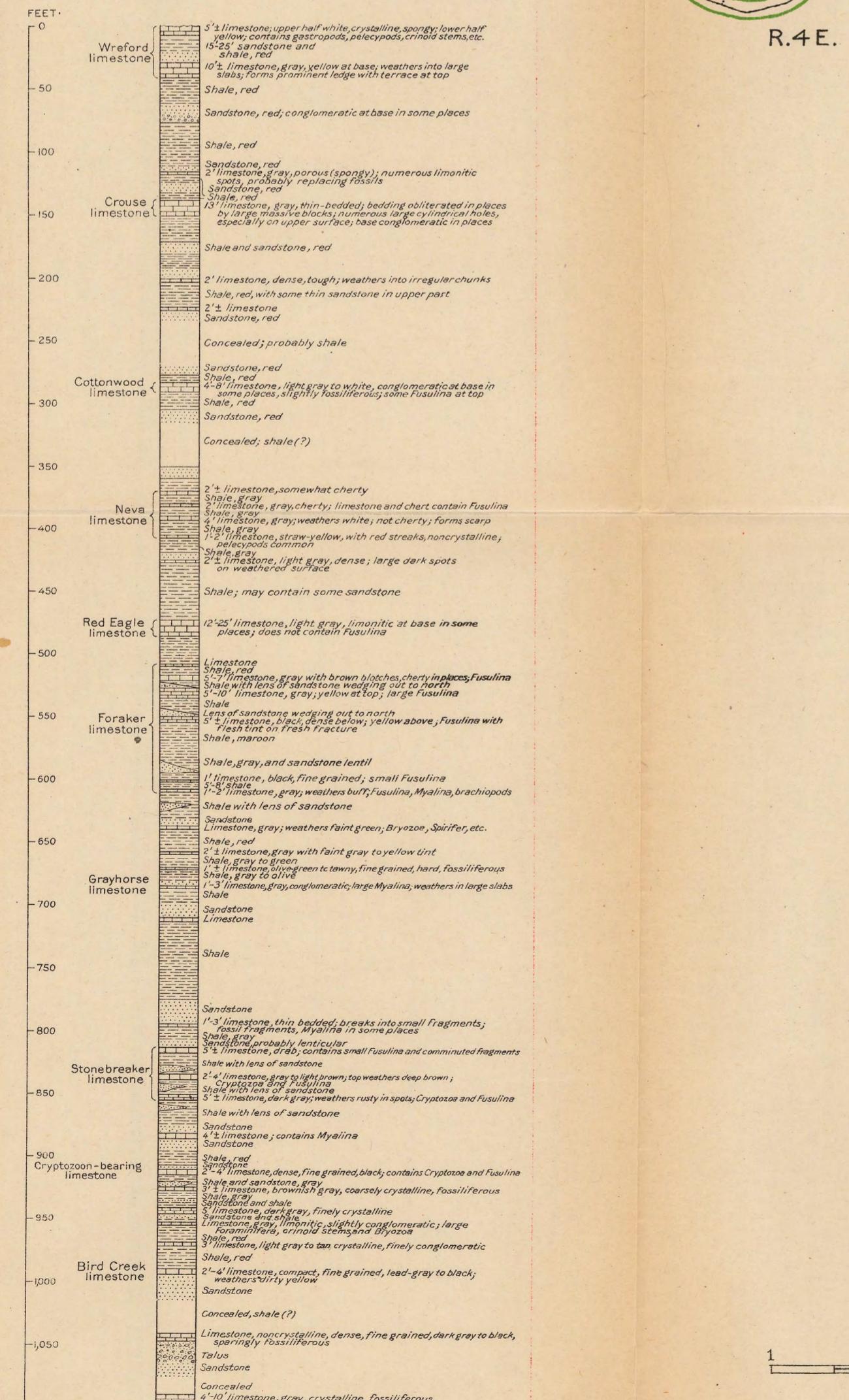
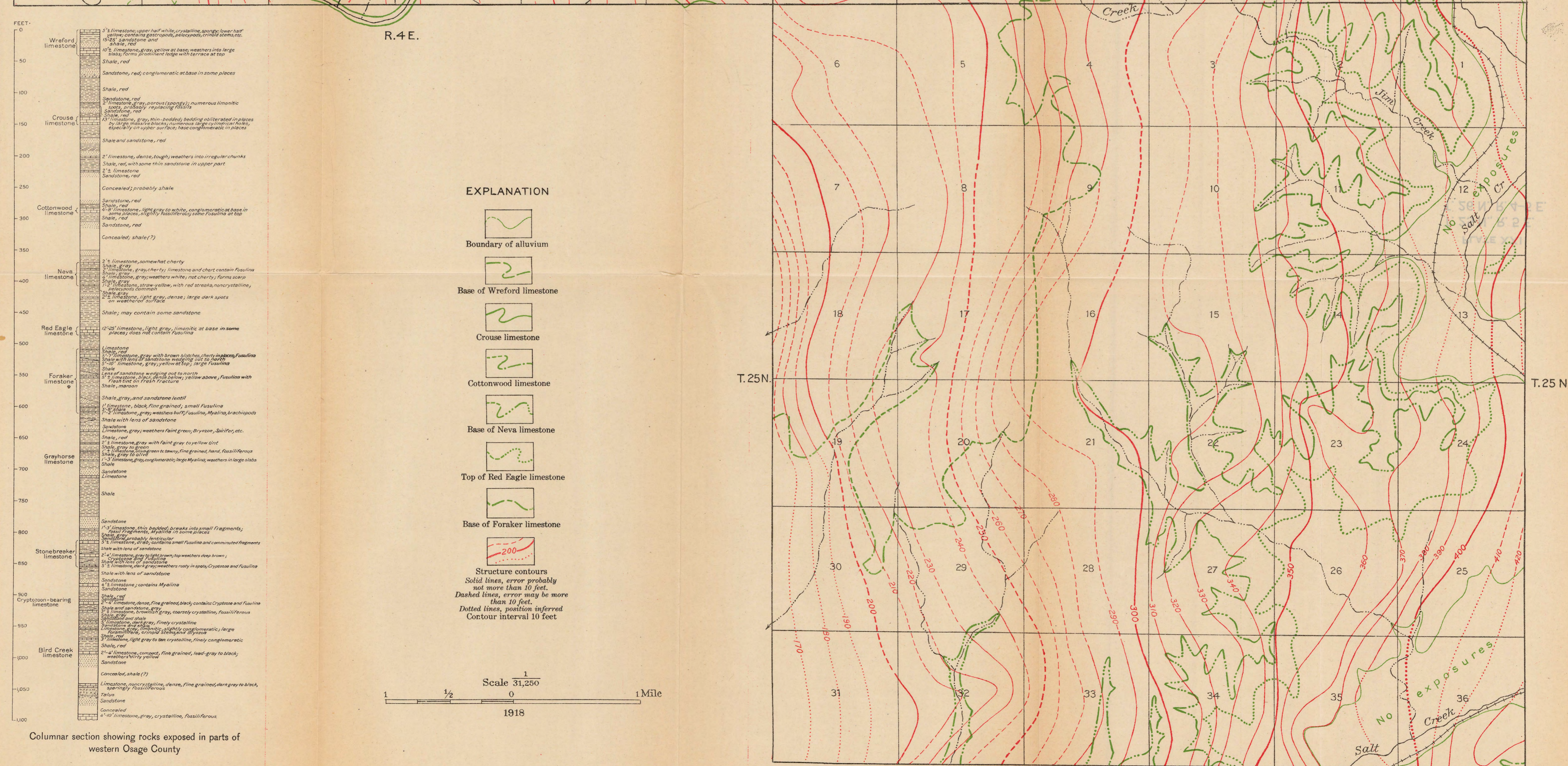


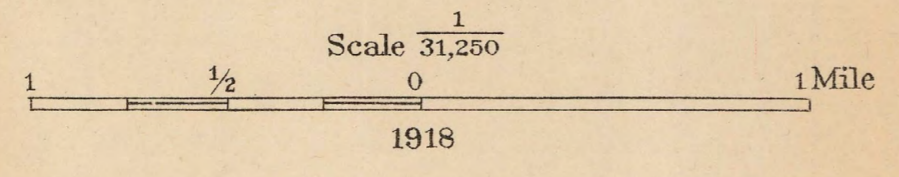
T. 26 N.

T. 26 N.



EXPLANATION

- Boundary of alluvium
- Base of Wreford limestone
- Crouse limestone
- Cottonwood limestone
- Base of Neva limestone
- Top of Red Eagle limestone
- Base of Foraker limestone
- Structure contours
Solid lines, error probably not more than 10 feet.
Dashed lines, error may be more than 10 feet.
Dotted lines, position inferred
Contour interval 10 feet



Columnar section showing rocks exposed in parts of western Osage County

MAP SHOWING GEOLOGIC STRUCTURE OF T. 25 N., R. 5 E., AND PARTS OF T. 26 N., RS. 4 AND 5 E., OKLAHOMA