

Please do not destroy or throw away this publication. If you have no further use for it write to the Geological Survey at Washington and ask for a frank to return it

UNITED STATES DEPARTMENT OF THE INTERIOR
Harold L. Ickes, Secretary
GEOLOGICAL SURVEY
W. C. Mendenhall, Director

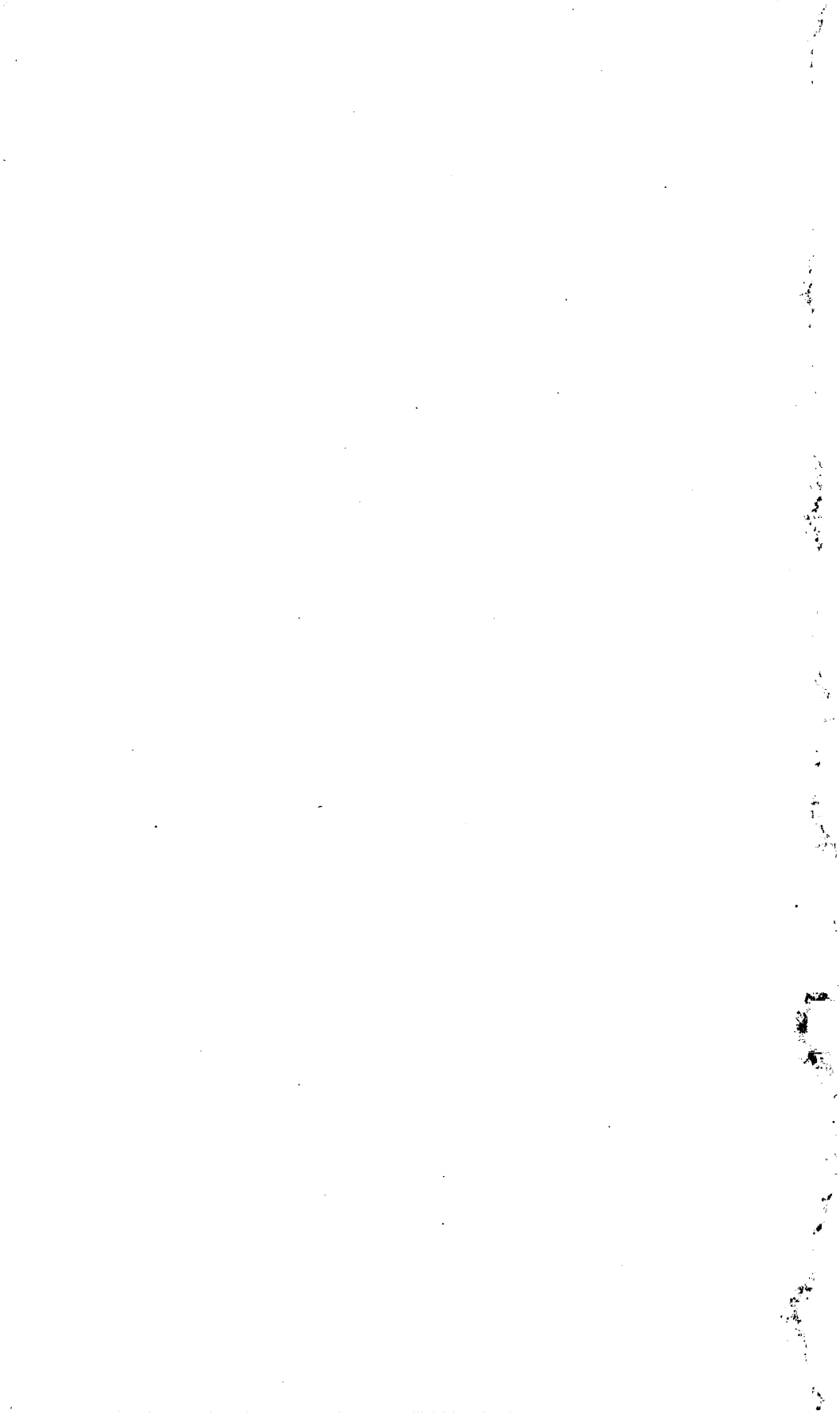
Bulletin 849

INVESTIGATIONS IN ALASKA RAILROAD BELT, 1931

BY
PHILIP S. SMITH AND OTHERS



UNITED STATES
GOVERNMENT PRINTING OFFICE
WASHINGTON : 1933



CONTENTS

	Page
Foreword, by P. S. Smith.....	1
Progress of surveys in the Anthracite Ridge district, by R. W. Richards and G. A. Waring.....	5
Lode deposits of the Fairbanks district, by J. M. Hill.....	29
The Willow Creek gold lode district, by J. C. Ray.....	165
The Mount Eielson district, by J. C. Reed.....	231
Mineral deposits near the West Fork of the Chulitna River, by C. P. Ross..	289
Lode deposits of Eureka and vicinity, Kantishna district, by F. G. Wells..	335
The Girdwood district, by C. F. Park, Jr.....	381
The Valdez Creek mining district, by C. P. Ross.....	425
The Moose Pass-Hope district, Kenai Peninsula, by Ralph Tuck.....	469

ILLUSTRATIONS

	Page
PLATE 1. Geologic map of Anthracite Ridge district.....	14
2. Geologic sections of Anthracite Ridge district.....	14
3. Map of the Fairbanks district, Alaska, showing geology, claims, ditches, and cultural features.....	In pocket
4. Claim map of Cleary Hill mine.....	98
5. Plan and cross section of main workings, Cleary Hill mine.....	98
6. Claim map of properties on Fairbanks-Wolf Creek divide.....	106
7. Plan and cross section, Hi-Yu mine.....	106
8. Plan and cross section, Ready Bullion mine.....	130
9. Claim map of Ryan lode, showing location of workings, roads, and places sampled in 1931.....	130
10. Plan and cross section, Mohawk mine.....	146
11. Geologic map of Willow Creek district.....	172
12. A, Chalcopyrite-molybdenite stringer in normal quartz diorite; B, Rhombic blocks produced by joining in quartz diorite; C, Lucky Shot mine and camp and War Baby mine.....	204
13. Underground workings at Lucky Shot and War Baby mines....	204
14. Cross sections of Lucy Shot mine.....	204
15. Workings on Skyscraper vein, Martin mine.....	220
16. Independence and Gold Cord mines.....	220
17. Map of workings of Independence mine.....	220
18. Map of Gold Cord mine.....	220
19. Map and section of Mabel mine.....	220
20. Map of workings of Fern mine.....	220
21. Topographic map of the Mount Eielson district.....	In pocket
22. Geologic map of the Mount Eielson district.....	In pocket
23. Structure sections across the Mount Eielson district.....	In pocket
24. Geologic map of part of the Mount Eielson district.....	In pocket
25. Geologic sketch map of the area near the West Fork of the Chulitna River, with structure sections.....	296

	Page
PLATE 26. Sketch map of the Ready Cash prospect, Ohio Creek.....	320
27. Sketch map of the Golden Zone and Mayflower prospects.....	320
28. Geologic map of Eureka and vicinity, Kantishna district... In pocket	
29. Sketch map of lode claims in the vicinity of Friday and Eureka Creeks.....	358
30. Assay map of Red Top tunnel.....	358
31. Contour sketch map of Little Annie claim, showing tunnel....	366
32. Assay map of Little Annie tunnel.....	366
33. Geologic map and sections of Girdwood district, Alaska... In pocket	
34. Geologic sketch map of the Valdez Creek mining district and vicinity..... In pocket	
35. Placer claim map of the Valdez Creek mining district.....	448
36. Geologic and topographic map of the Moose Pass-Hope district showing location of mines and prospects.....	490
FIGURE 1. Index map showing areas investigated in Alaska Railroad belt, 1931.....	3
2. Gold and silver produced in the Fairbanks district, 1903-31....	47
3. Directions and dips of veins and faults in the Pedro Dome area..	65
4. Directions and dips of veins and faults in the Ester Dome area..	65
5. Structural relations of vein quartz in Fairbanks district.....	67
6. Metallization of veins with sulphide and free gold, Fairbanks district.....	68
7. Camera lucida drawings of polished sections of bonanza ore, Fairbanks district.....	69
8. Camera lucida drawings of polished sections of bonanza ore from Bank stope, Cleary Hill mine.....	69
9. Map of Dome Creek drainage basin, showing location of mines and prospects.....	77
10. Plan of surface workings on vein, Soo mine.....	79
11. Map of Cleary Creek drainage basin, showing location of mines and prospects.....	85
12. Plan of 100-foot and 160-foot levels, Newsboy mine.....	87
13. Plan and cross section, Wyoming mine.....	97
14. Map of Fairbanks Creek drainage basin, showing location of mines and prospects.....	103
15. Plan of 60-foot level, Henry Ford no. 3 shaft, McCarty property.....	105
16. Claim map, Hi-Yu mine.....	109
17. Map of upper Goldstream Creek Valley, including Pedro, Twin, and Granite Creeks and Skoogy Gulch, showing location of mines and prospects.....	113
18. Map of Ester Dome area, showing location of mines and prospects.....	121
19. Plan of Little Eva adit.....	130
20. Plan of 40-foot level, Eva no. 2 shaft, Stay property.....	131
21. Plan and longitudinal section, Blue Bird shaft.....	134
22. Cross section and plan of levels, Billy Sunday mine.....	141
23. Plan and section of workings, Grant mine.....	151
24. Sketch map showing tungsten lode claims in the Fairbanks district.....	158
25. Schlieren in rock near upper adit of War Baby mine on Craigie Creek.....	178

	Page
FIGURE 26. Contact of dacite dike rock with quartz diorite country rock in Lucky Shot mine.....	182
27. Mineralized pegmatite dike on Holland property, on eastern valley wall of upper Purches Creek.....	184
28. Section of vein in Lucky Shot mine, 350-foot level.....	196
29. Section of vein in Lucky Shot mine, 500-foot level.....	197
30. Section of vein in Lucky Shot mine, raise 553, 75 feet above 500-foot level.....	198
31. Flow sheet of Lucky Shot mine.....	207
32. Sections of Gold Cord mine.....	219
33. Section of Fern mine, showing vein structure and assay values.....	255
34. Mean monthly temperature and precipitation at McKinley Park, Wonder Lake, and Broad Pass.....	241
35. Development of normal fault south of Mount Eielson.....	264
36. Explanation of granodiorite mass in forks of Glacier and Crystal Creeks as part of the Mount Eielson mass cut off by faulting.....	265
37. Generalized sketch map showing location of claims on the northern slope of Mount Eielson.....	277
38. Diagrammatic view of the north flank of the valley of Copeland Creek near the ice-filled gorge.....	306
39. Diagrammatic sketch of faulting along upper Blind Creek.....	307
40. Sketch map of the lower Ready Cash tunnel.....	319
41. Sketch map of the Copper King prospect.....	320
42. Tunnel on the Golden Zone prospect.....	322
43. Sketch map of the Riverside workings.....	326
44. Sketch map of the Eagle prospect.....	329
45. Geologic sketch map and section of main tunnel of Red Top claim.....	362
46. Goat Mountain thrust fault.....	392
47. Normal fault caused by compressive stresses.....	392
48. Section exposed in placer workings of lower Crow Creek.....	399
49. Cross section of a part of lower Crow Creek Valley.....	399
50. Sketch map of claims of Holmgren-Erickson mine.....	400
51. Section on northeast side of the "big cut", lower Crow Creek.....	501
52. Sketch map of the upper workings, Bruno Agostino mine.....	415
53. Probable location of buried channels near Denali with reference to present drainage.....	447
54. Contour map of the Tammany Channel.....	450
55. Contour map of hydraulic cut on the Folk claim.....	452
56. Sketch map of the lodes on the Timberline prospects.....	461
57. Plan of underground workings and position of the vein at Hirshey mine.....	502
58. Plan of underground workings of the Oracle mine, showing position of the vein.....	509
59. Longitudinal section of the Oracle vein, showing limits of the ore shoot.....	509
60. Sketch map of the mineralized area between Slate and Summit Creeks.....	511
61. Geologic map of mineralized dike in lower tunnel of the Gilpatrick property.....	513