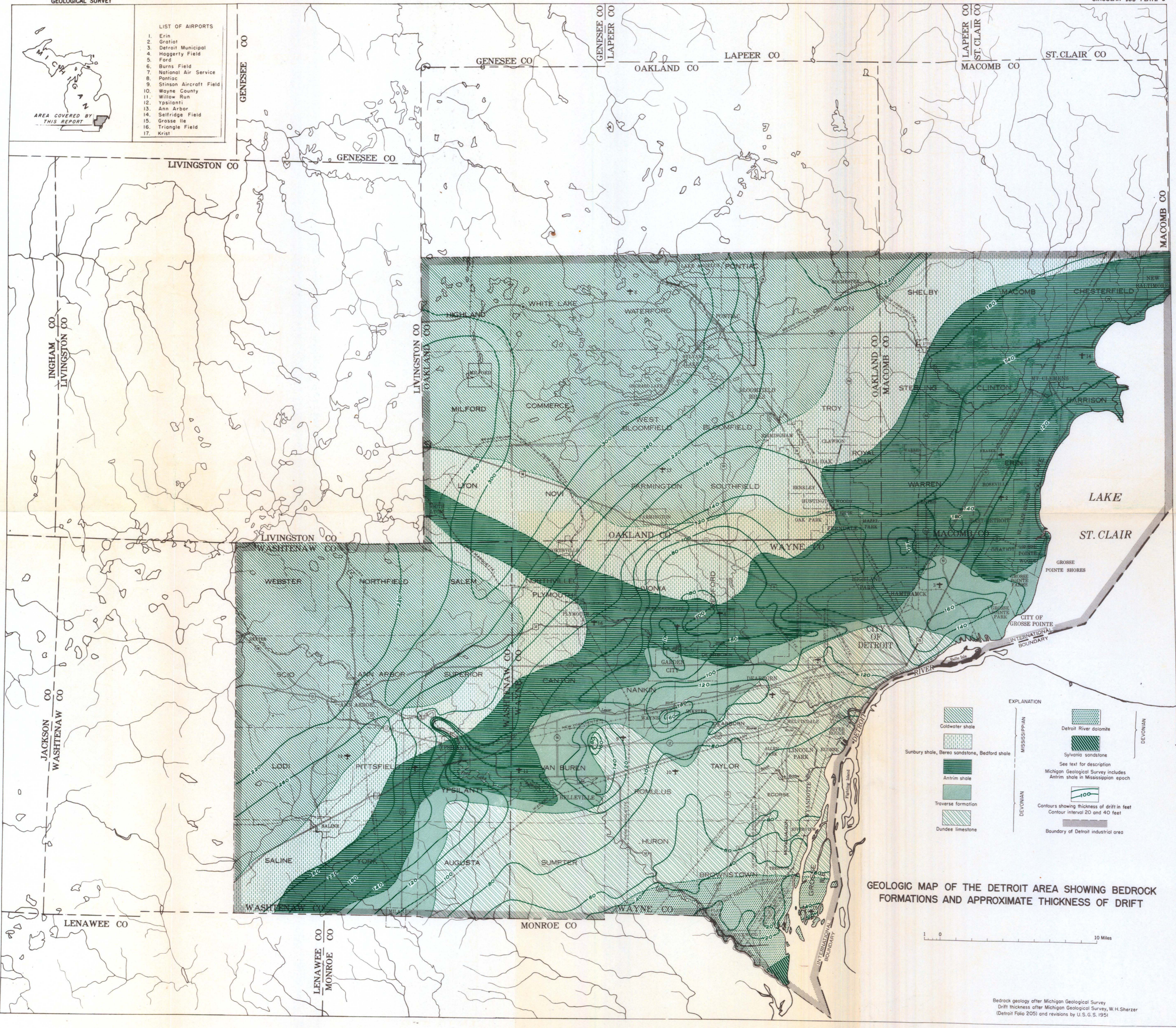




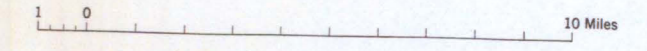
- LIST OF AIRPORTS
1. Erin
 2. Gratiot
 3. Detroit Municipal
 4. Haggerty Field
 5. Ford
 6. Burns Field
 7. National Air Service
 8. Pontiac
 9. Stinson Aircraft Field
 10. Wayne County
 11. Willow Run
 12. Ypsilanti
 13. Ann Arbor
 14. Selfridge Field
 15. Grosse Ile
 16. Triangle Field
 17. Krist



EXPLANATION

	Coldwater shale		Detroit River dolomite
	Sunbury shale, Berea sandstone, Bedford shale		Sylvania sandstone
	Antrim shale	See text for description Michigan Geological Survey includes Antrim shale in Mississippian epoch	
	Traverse formation		Contours showing thickness of drift in feet Contour interval 20 and 40 feet
	Dundee limestone		Boundary of Detroit industrial area

GEOLOGIC MAP OF THE DETROIT AREA SHOWING BEDROCK FORMATIONS AND APPROXIMATE THICKNESS OF DRIFT



Bedrock geology after Michigan Geological Survey
Drift thickness after Michigan Geological Survey, W. H. Sherzer
(Detroit Folio 205) and revisions by U.S.G.S. 1951