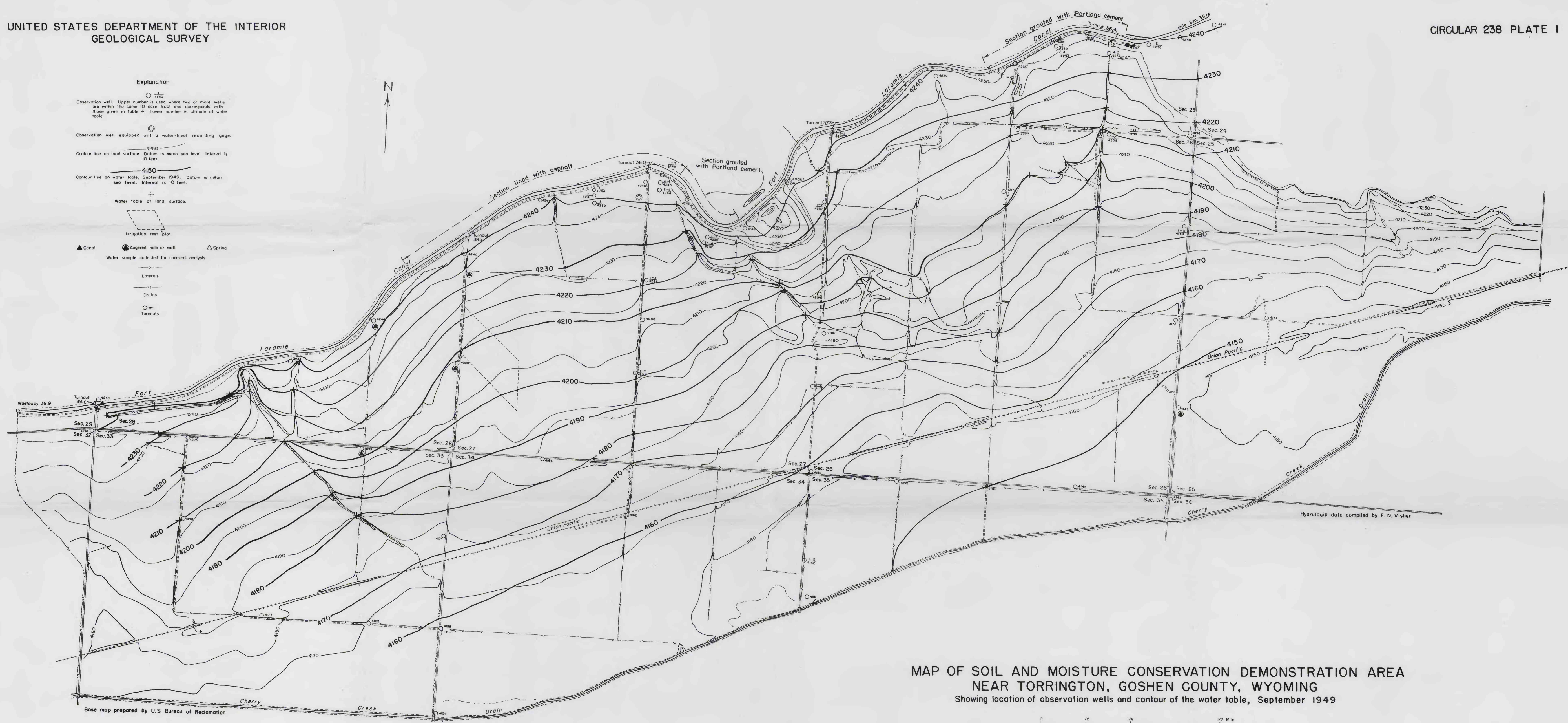


Explanation

- Observation well. Upper number is used where two or more wells are within the same 10-acre tract and corresponds with those given in table 4. Lower number is altitude of water table.
- ⊙ Observation well equipped with a water-level recording gage.
- 4250 Contour line on land surface. Datum is mean sea level. Interval is 10 feet.
- 4150 Contour line on water table, September 1949. Datum is mean sea level. Interval is 10 feet.
- + Water table at land surface.
- Irrigation test plot.
- ▲ Canal
- ⊙ Augered hole or well
- △ Spring
- Water sample collected for chemical analysis.
- Laterals
- Drains
- Turnouts



MAP OF SOIL AND MOISTURE CONSERVATION DEMONSTRATION AREA
 NEAR TORRINGTON, GOSHEN COUNTY, WYOMING
 Showing location of observation wells and contour of the water table, September 1949

Base map prepared by U.S. Bureau of Reclamation

0 1/8 1/4 1/2 Mile