

The GIS Project for the Assessment of Unconventional (Tight) Gas Resources in Upper Cook Inlet Basin, South-Central Alaska



Click here to return to
Volume Title Page

By Christopher P. Anderson

Chapter 3 of 3

Assessment of Unconventional (Tight) Gas Resources in Upper Cook Inlet Basin, South-Central Alaska

Compiled by C.J. Schenk

U.S. Geological Survey Digital Data Series DDS-69-AA

U.S. Department of the Interior
U.S. Geological Survey

U.S. Department of the Interior
SALLY JEWELL, Secretary

U.S. Geological Survey
Suzette M. Kimball, Acting Director

U.S. Geological Survey, Reston, Virginia: 2015

For more information on the USGS—the Federal source for science about the Earth, its natural and living resources, natural hazards, and the environment, visit <http://www.usgs.gov> or call 1–888–ASK–USGS.

For an overview of USGS information products, including maps, imagery, and publications, visit <http://www.usgs.gov/pubprod>

To order this and other USGS information products, visit <http://store.usgs.gov>

Any use of trade, firm, or product names is for descriptive purposes only and does not imply endorsement by the U.S. Government.

Although this information product, for the most part, is in the public domain, it also may contain copyrighted materials as noted in the text. Permission to reproduce copyrighted items must be secured from the copyright owner.

Suggested citation:

Anderson, C.P., 2015, The GIS project for the assessment of unconventional (tight) gas resources in Upper Cook Inlet Basin, South-Central Alaska, chap. 3 of Assessment of unconventional (tight) gas resources in Upper Cook Inlet Basin, South-central Alaska: U.S Geological Digital Data Series 69–AA, 1 p., <http://dx.doi.org/10.3133/ds69AA>.

ISSN 2327-638X (online)

The GIS Project for the Assessment of Unconventional (Tight) Gas Resources in Upper Cook Inlet Basin, South-Central Alaska

By Christopher P. Anderson

A geographic information system (GIS) focusing on the Upper Cook Inlet Basin, South-Central Alaska was developed as a visual-analysis tool for the U.S. Geological Survey's 2011 assessment of the undiscovered, technically recoverable oil and gas resources in the Upper Cook Inlet Basin. The Central Energy Resources Science Center of the U.S. Geological Survey has also developed an Internet Map Service to deliver the GIS data to the public. This mapping tool uses information from a database about the oil and natural gas endowment of the United States—including physical locations of geologic and geographic data—and converts the data into visual layers. Portrayal and analysis of geologic features on an interactive map provide an excellent tool for understanding domestic oil and gas resources for strategic planning, formulating economic and energy policies, evaluating lands under the purview of the Federal Government, and developing sound environmental policies. Assessment results can be viewed and analyzed or downloaded from the Web site. Other data that are also available in the interactive map include the following:

- Cities
- Roads
- Geologic provinces
- Total petroleum system
- States
- Counties
- Streams and water bodies
- Federal surface ownership

Click on the map below to access the Upper Cook Inlet Basin data.

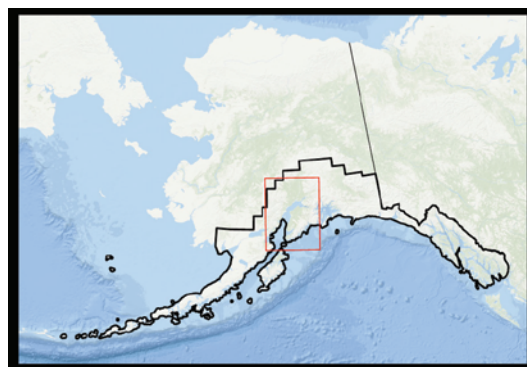


Figure 1. Upper Cook Inlet Basin; boundary is shown in red.

Most of the base cartographic data layers used in the GIS project were obtained from the U.S. Department of the Interior National Map Web site, <http://viewer.nationalmap.gov/viewer/>.



Click here to return to
Volume Title Page

Publishing support provided by:
Denver Publishing Service Center

For more information concerning this publication, contact:
Center Director, USGS Central Energy Resources Science Center
Box 25046, Mail Stop 939
Denver, CO 80225
(303) 236-1647

Or visit the Central Energy Resources Science Center Web site at:
<http://energy.usgs.gov/>