

Index map showing the limits of the Bighorn Basin, major structural features, sample locations, and line of cross section. Numbers refer to sampled well locations in column 1 in table 1.

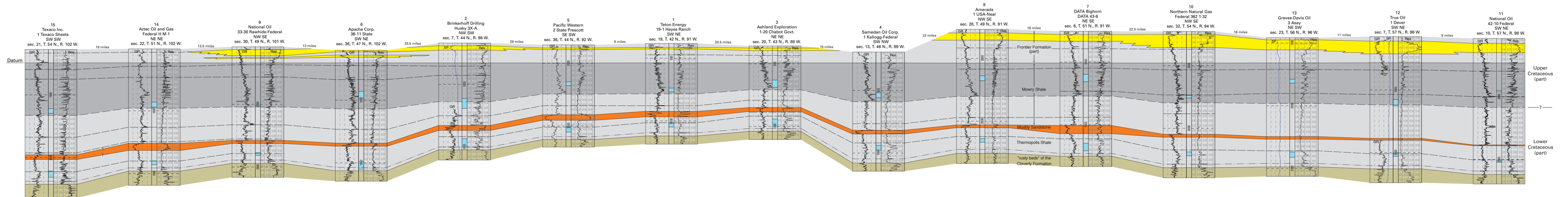
EXPLANATION

- Marine, marginal marine, or coastal sandstone or siltstone
- Siliceous marine shale in the upper part of the Mowry Shale
- Estuarine, fluvial, or marginal marine sandstone, undifferentiated
- Nonsiliceous shale, calcareous shale, sandy shale, or silty shale of offshore or prodelta origin
- Laminated siltstone, shale, and minor amounts of sandstone that accumulated in tidal flats

Log type

- GR Gamma ray
- Res Resistivity
- SP Spontaneous potential

— Formation and (or) lithologic contact
- - - Locally correlatable horizon or marker bed



SUBSURFACE STRATIGRAPHIC CROSS SECTION OF THE THERMOPOLIS AND MOWRY SHALES AND ASSOCIATED ROCKS IN THE BIGHORN BASIN

By
Thomas M. Finn
2010