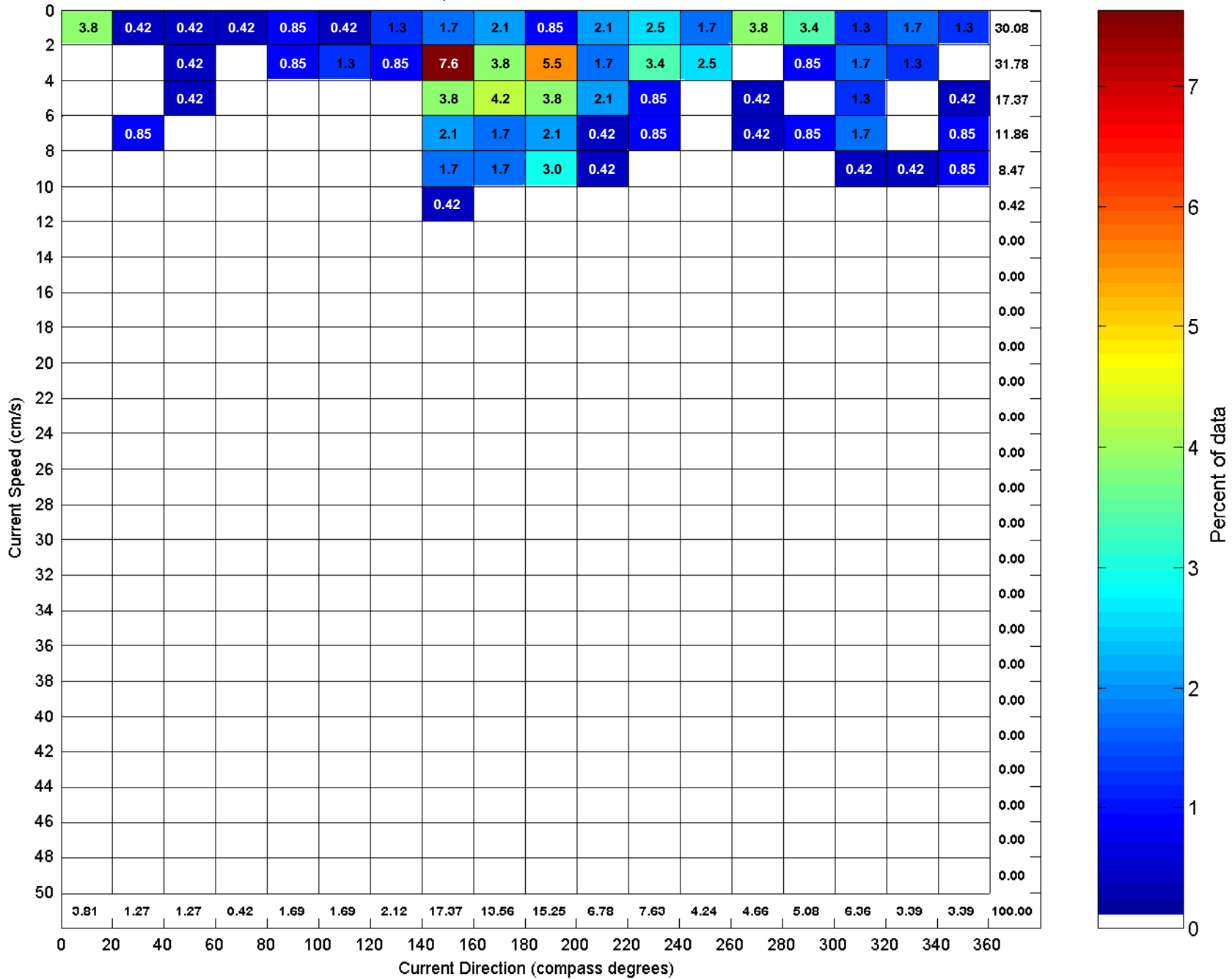
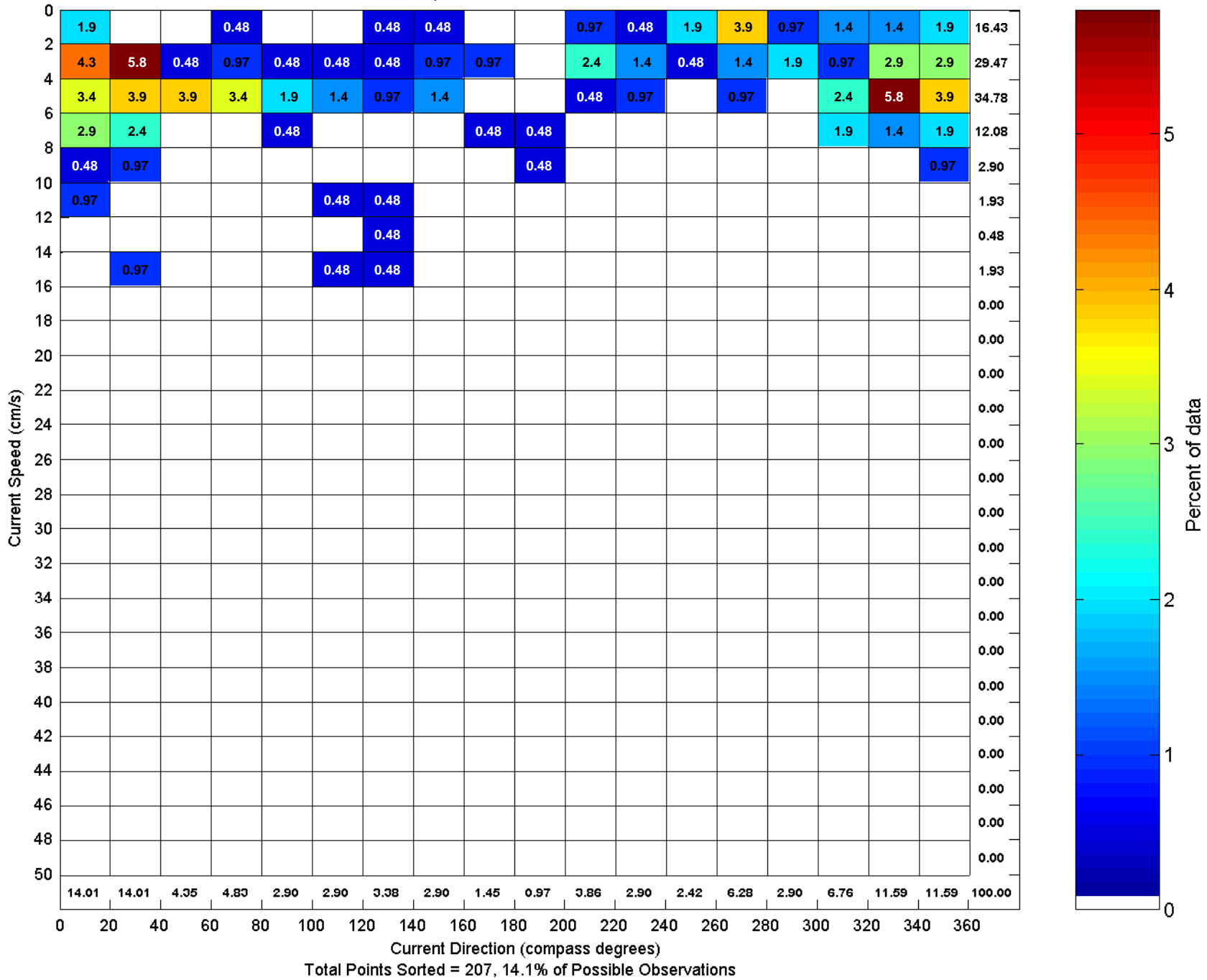


Site A, Sorted Current Speed and Direction
 Low-passed Current, 15 mbs: 1995



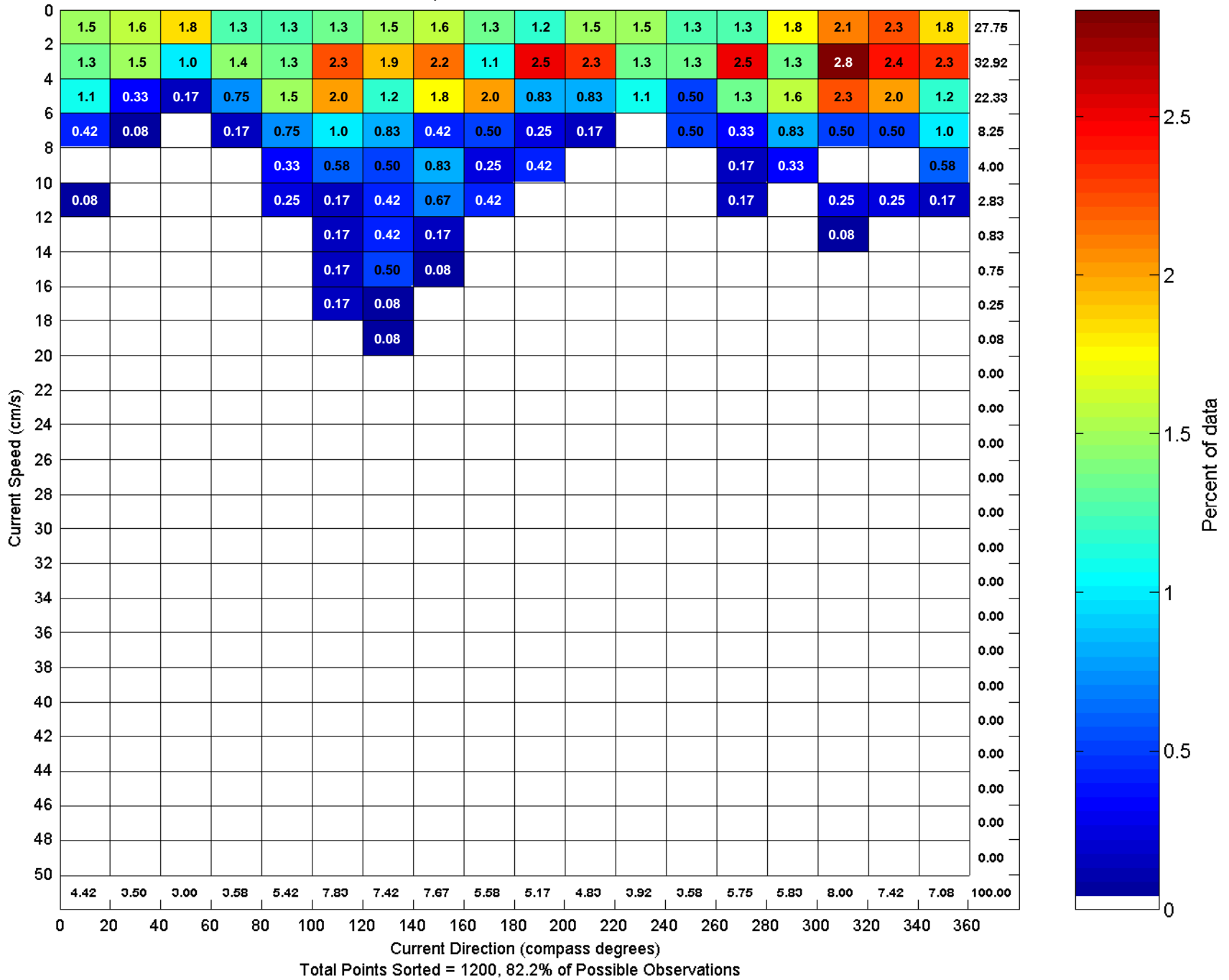
Total Points Sorted = 236, 16.2% of Possible Observations

Site A, Sorted Current Speed and Direction
 Low-passed Current, 15 mbs: 1996



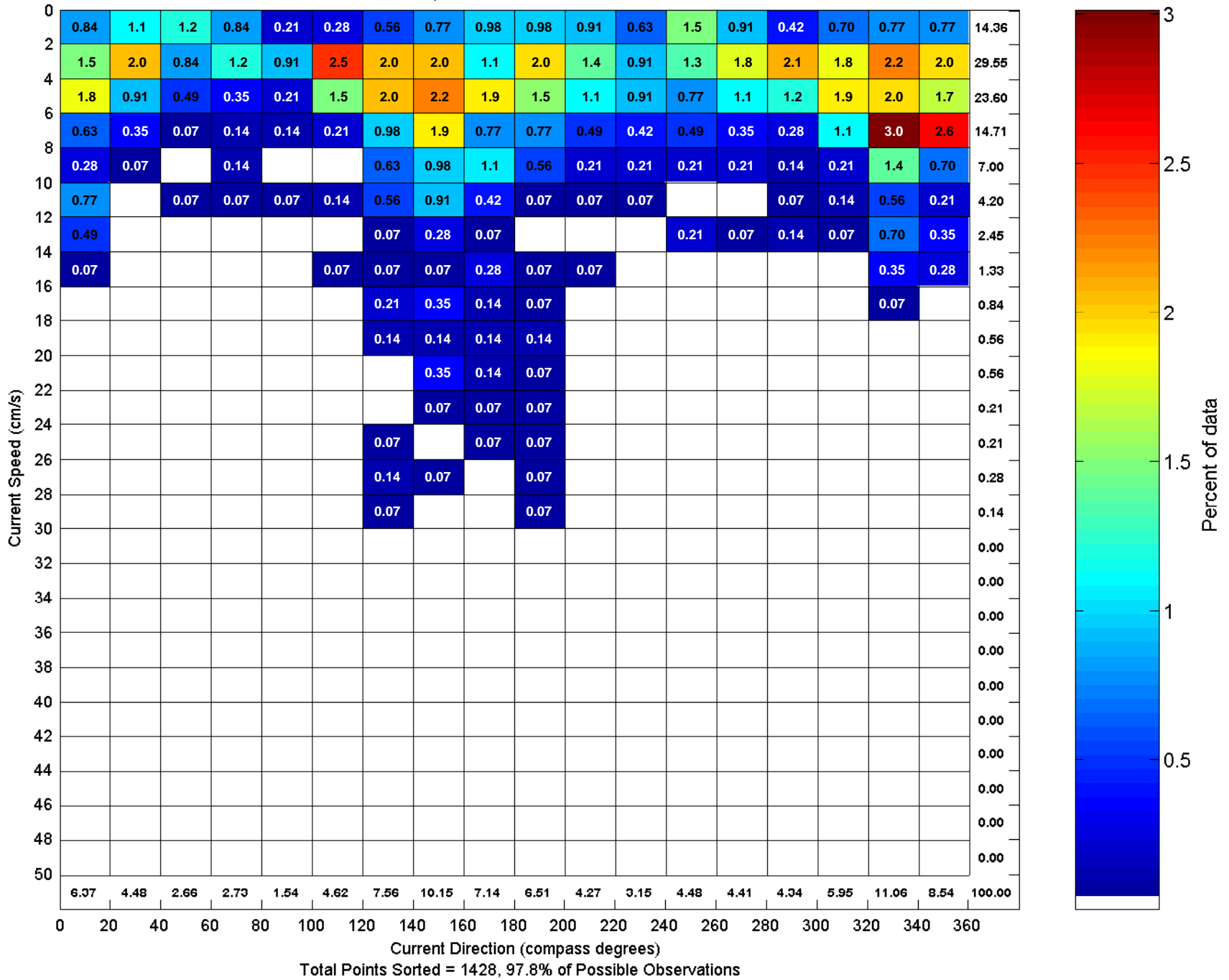
Total Points Sorted = 207, 14.1% of Possible Observations

Site A, Sorted Current Speed and Direction
 Low-passed Current, 15 mbs: 1997



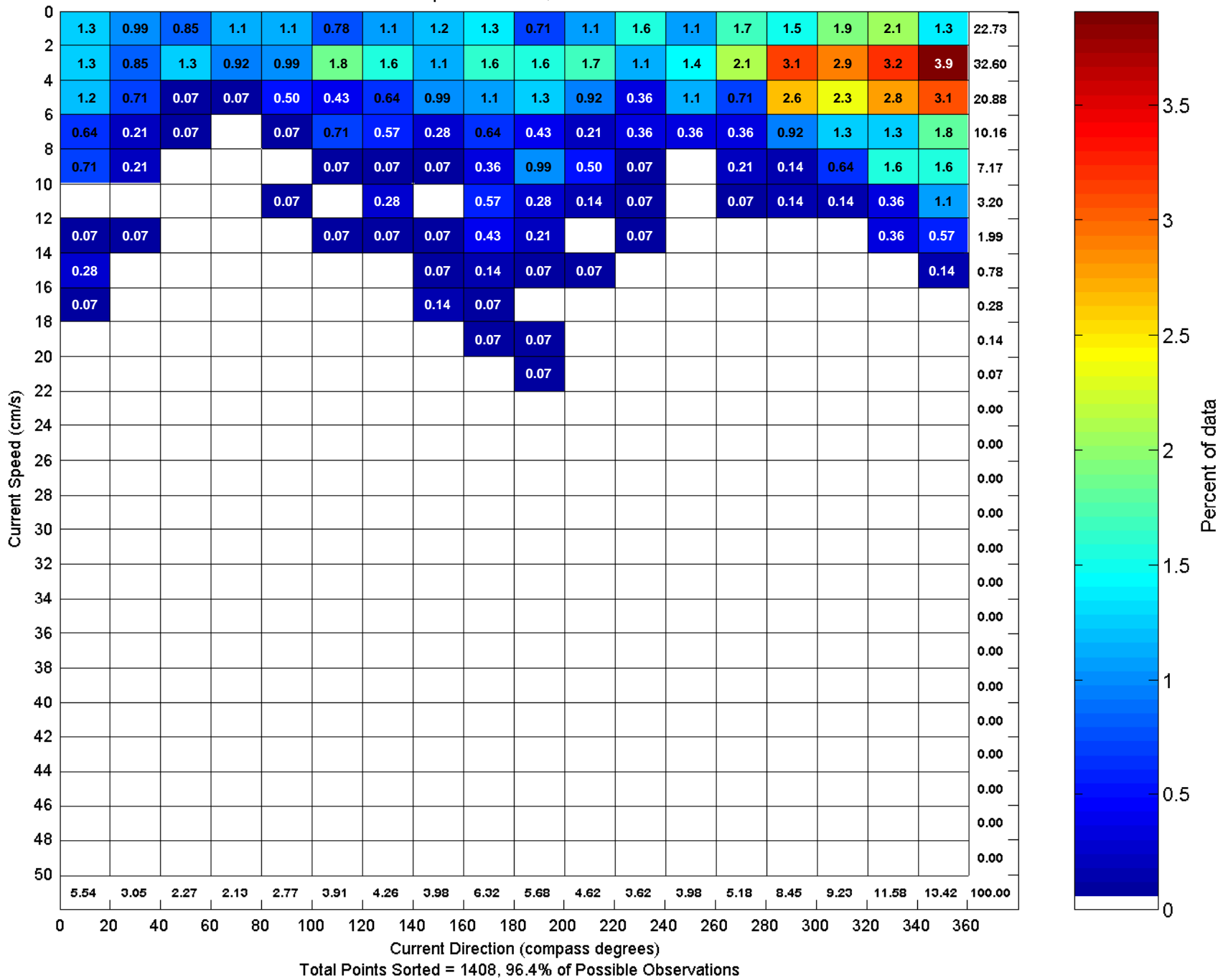
Total Points Sorted = 1200, 82.2% of Possible Observations

Site A, Sorted Current Speed and Direction
 Low-passed Current, 15 mbs: 1998



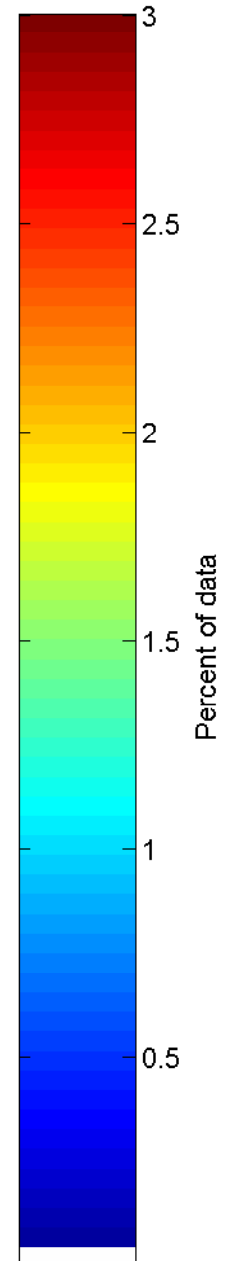
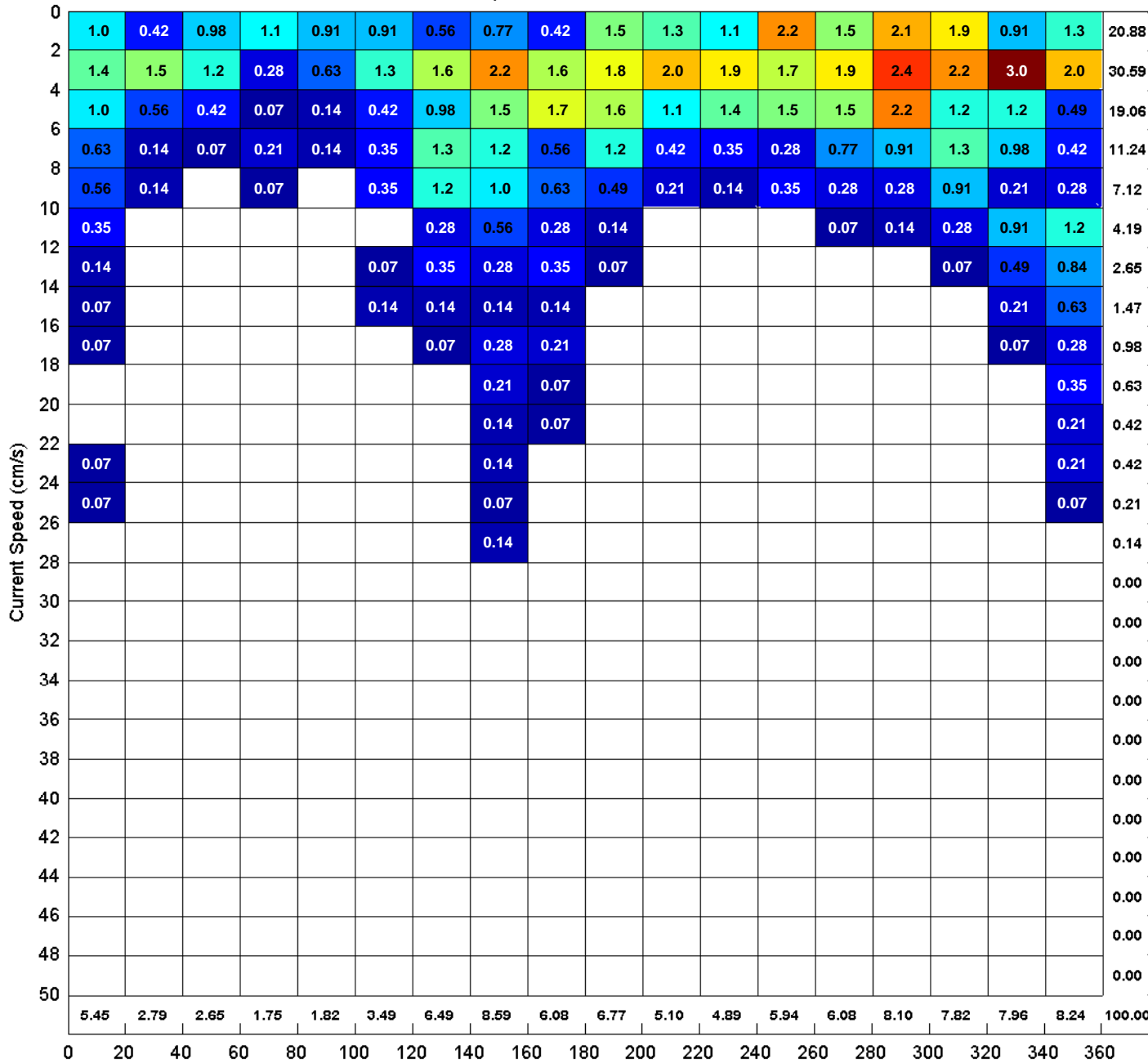
Total Points Sorted = 1428, 97.8% of Possible Observations

Site A, Sorted Current Speed and Direction
 Low-passed Current, 15 mbs: 1999



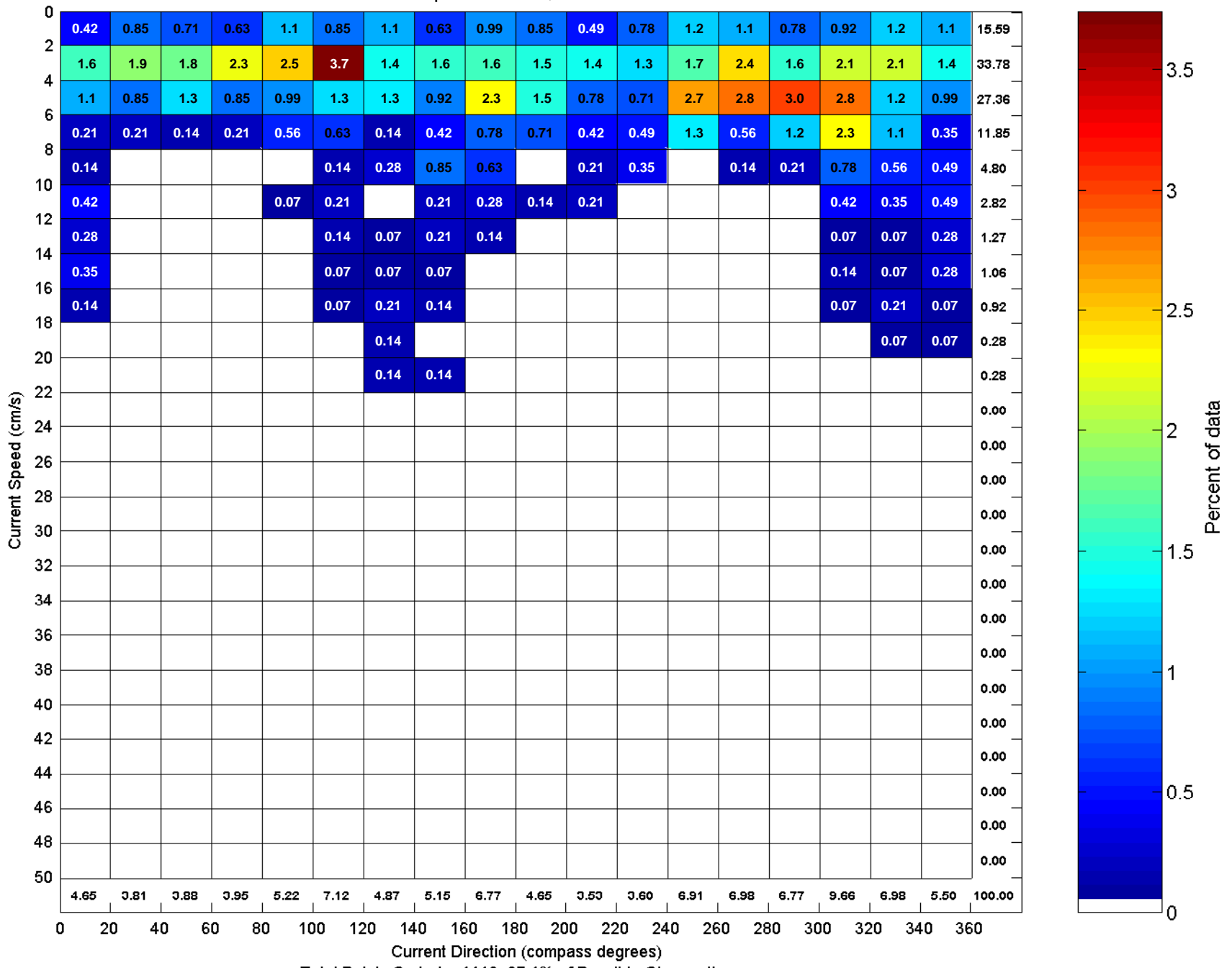
Total Points Sorted = 1408, 96.4% of Possible Observations

Site A, Sorted Current Speed and Direction
 Low-passed Current, 15 mbs: 2000



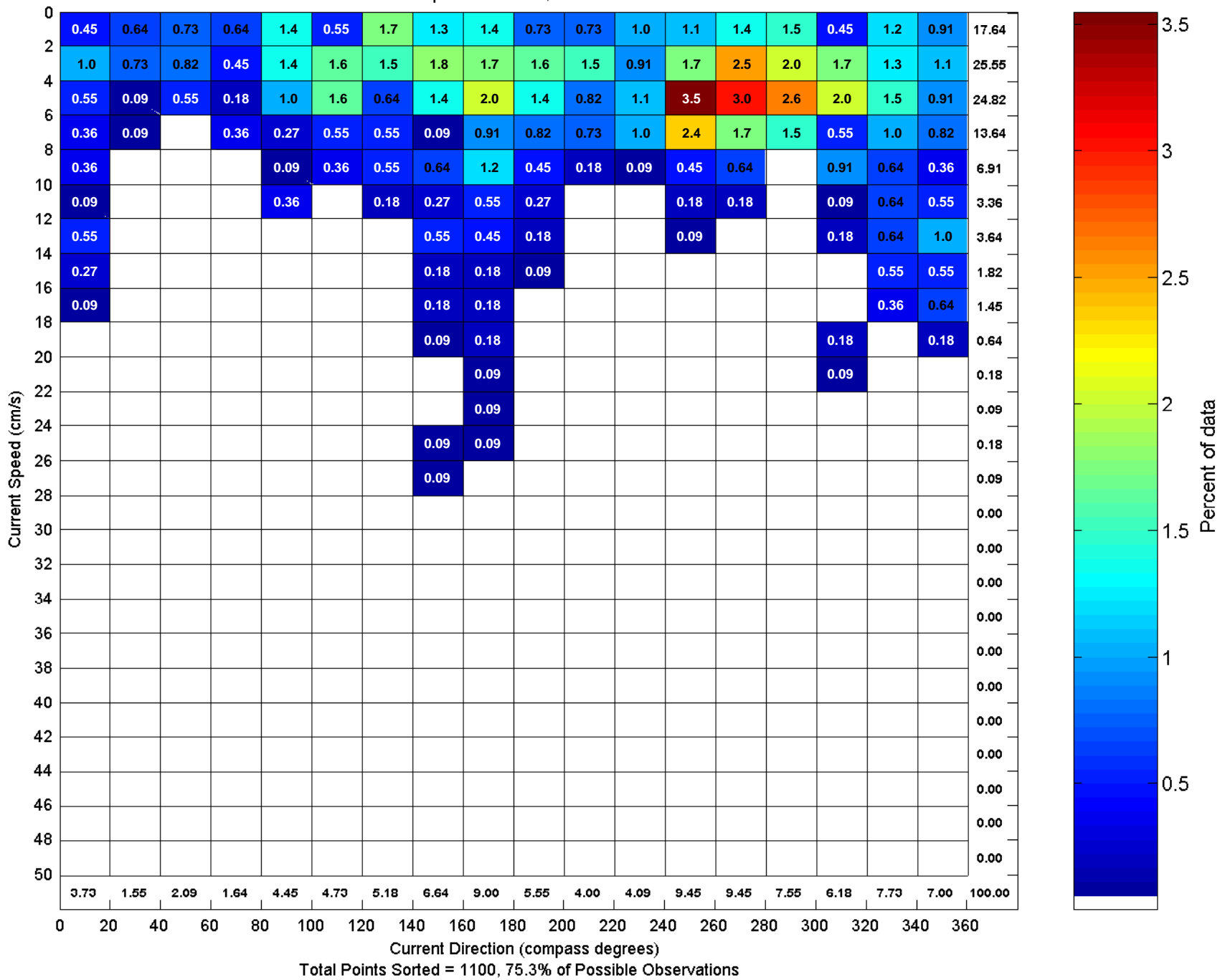
Total Points Sorted = 1432, 97.8% of Possible Observations

Site A, Sorted Current Speed and Direction
 Low-passed Current, 15 mbs: 2001



Total Points Sorted = 1418, 97.1% of Possible Observations

Site A, Sorted Current Speed and Direction
 Low-passed Current, 15 mbs: 2002



Total Points Sorted = 1100, 75.3% of Possible Observations