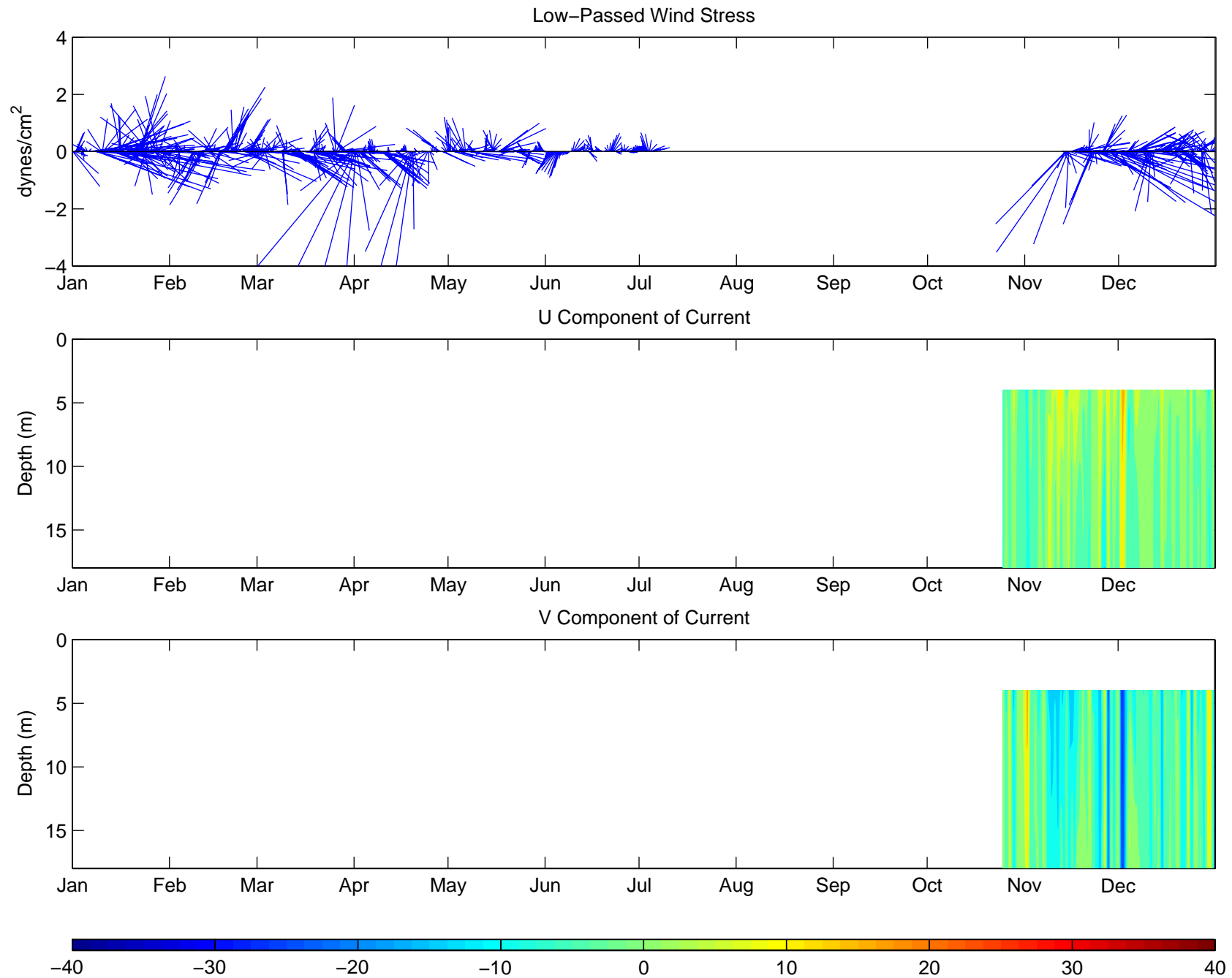
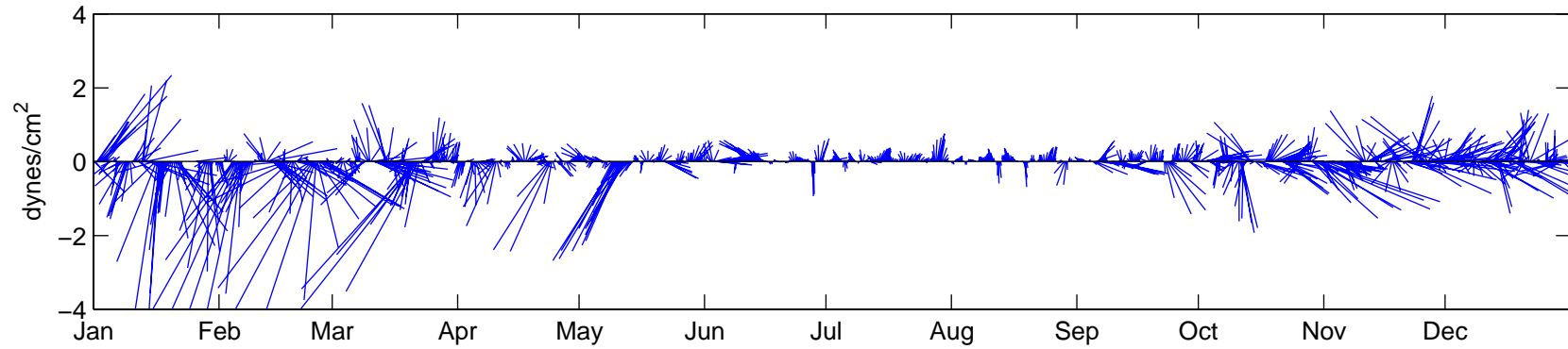


Low-Pass Filtered Wind Stress and Profiling Current Meter Observations Site B, 1997

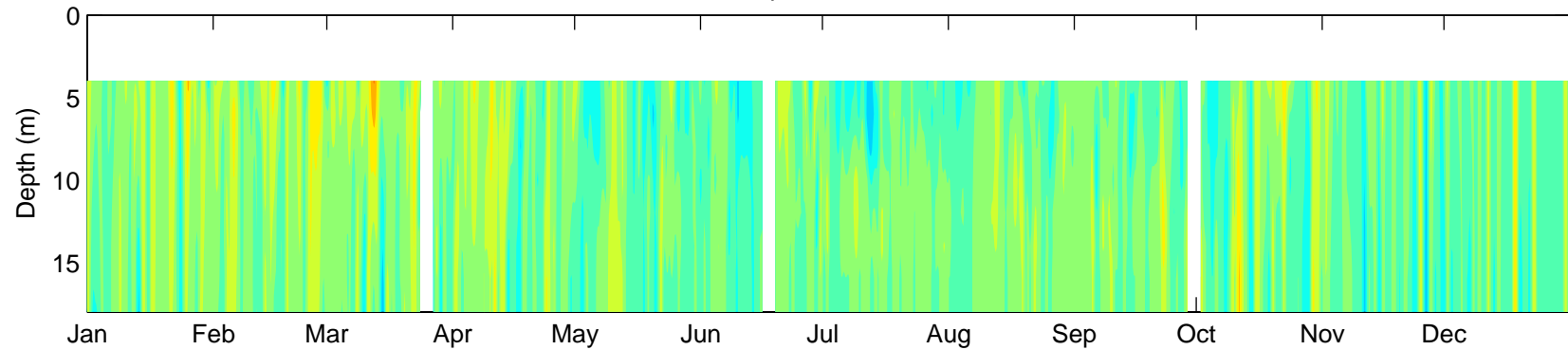


Low-Pass Filtered Wind Stress and Profiling Current Meter Observations Site B, 1998

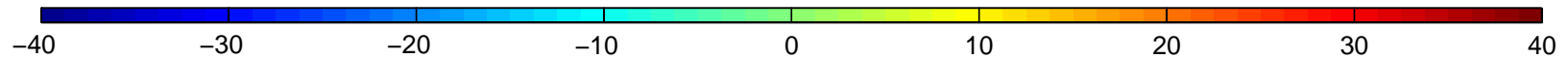
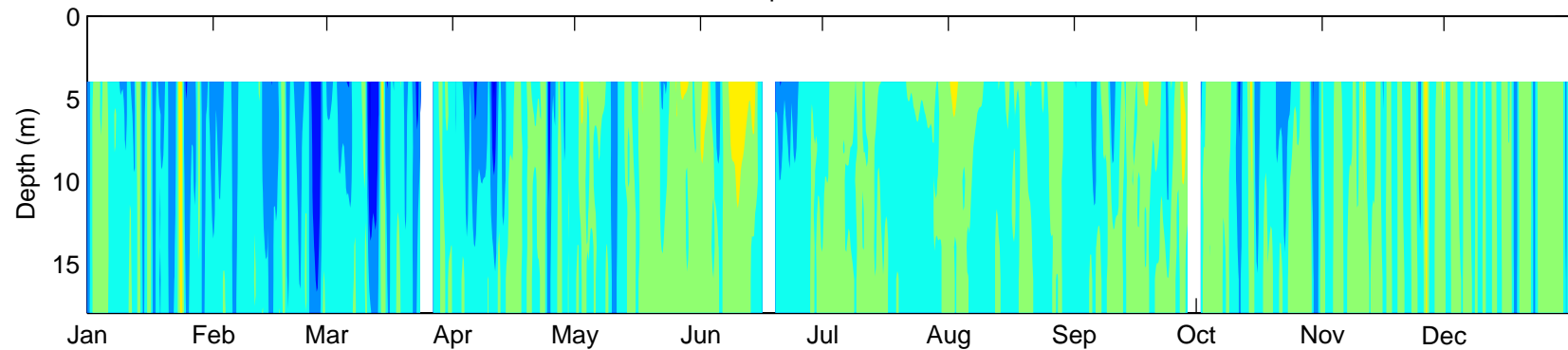
Low-Passed Wind Stress



U Component of Current

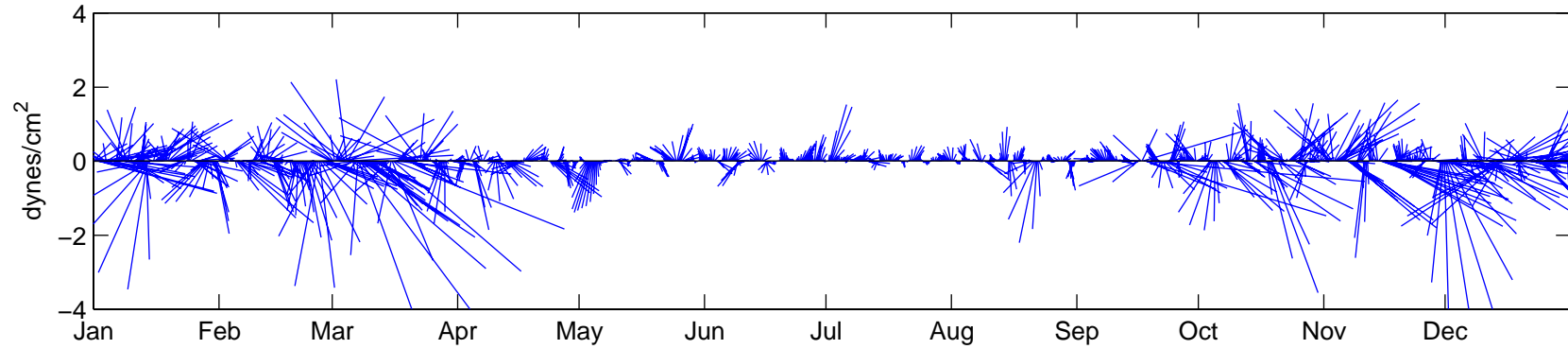


V Component of Current

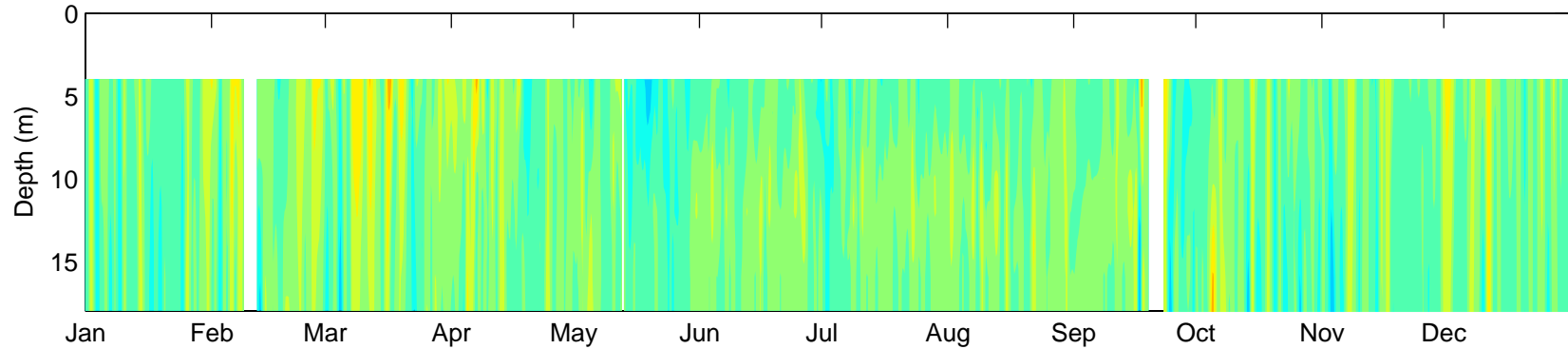


Low-Pass Filtered Wind Stress and Profiling Current Meter Observations Site B, 1999

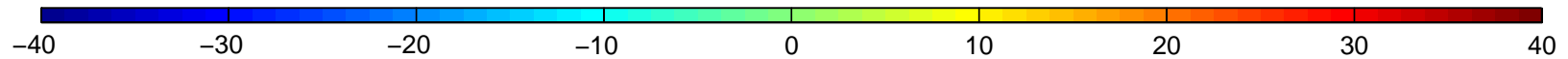
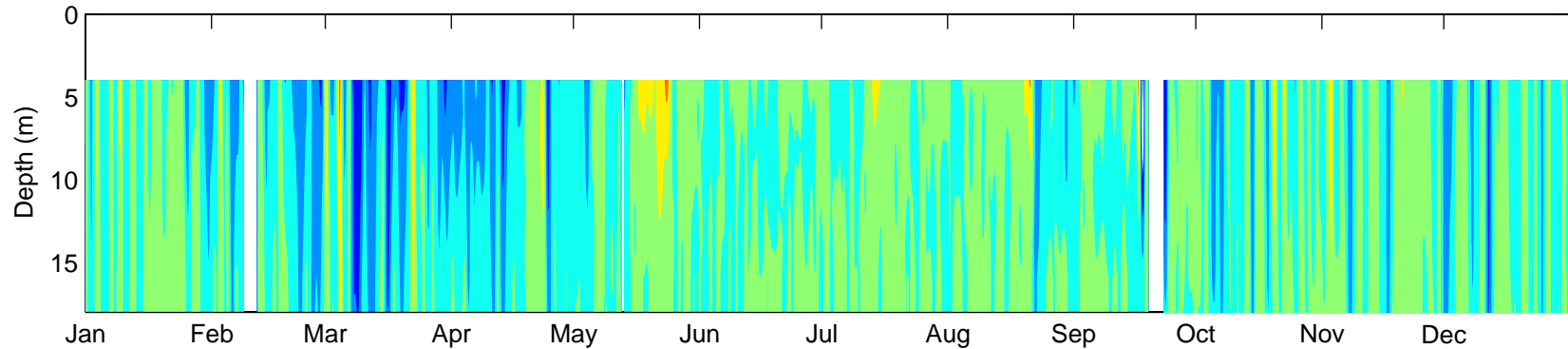
Low-Passed Wind Stress



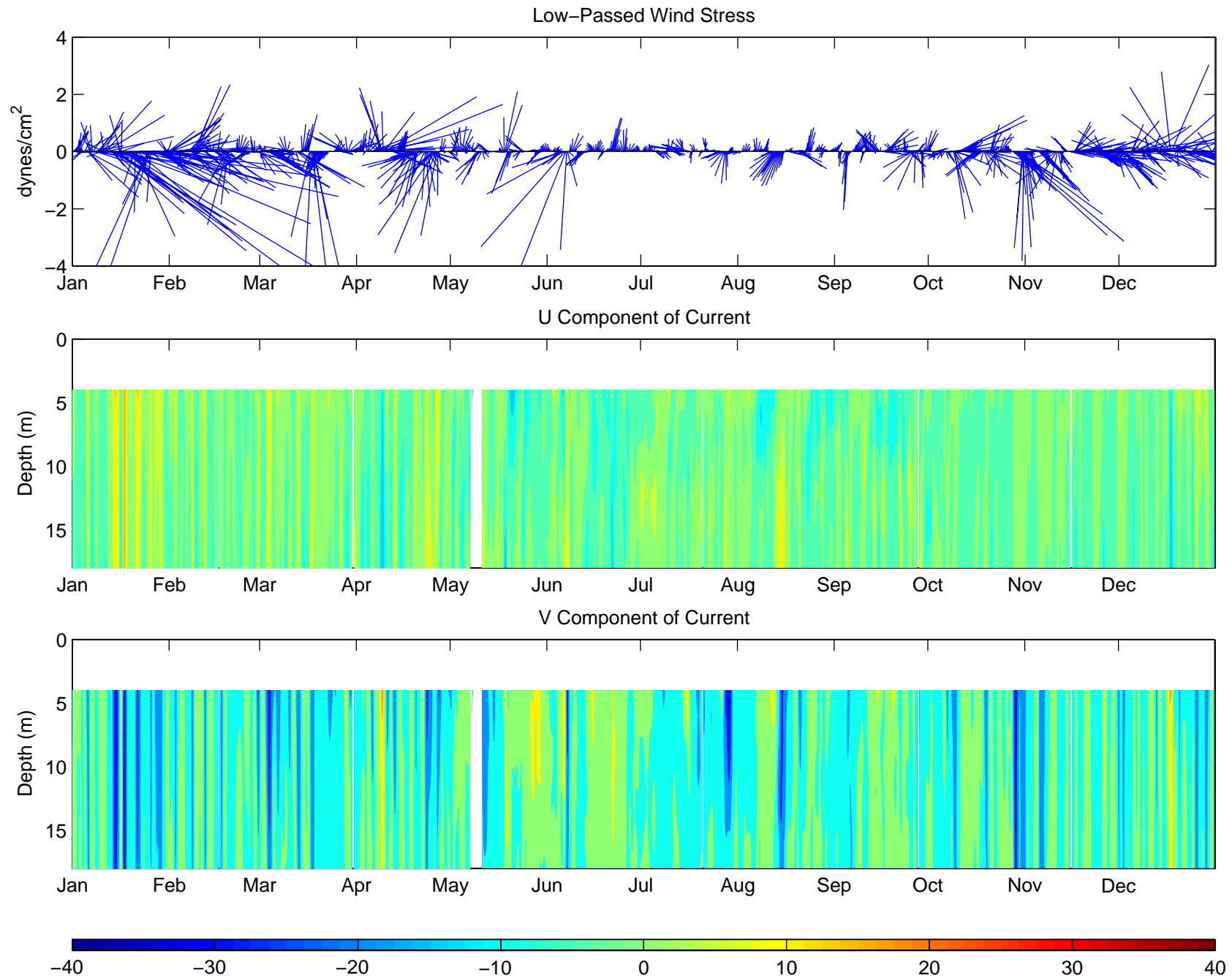
U Component of Current



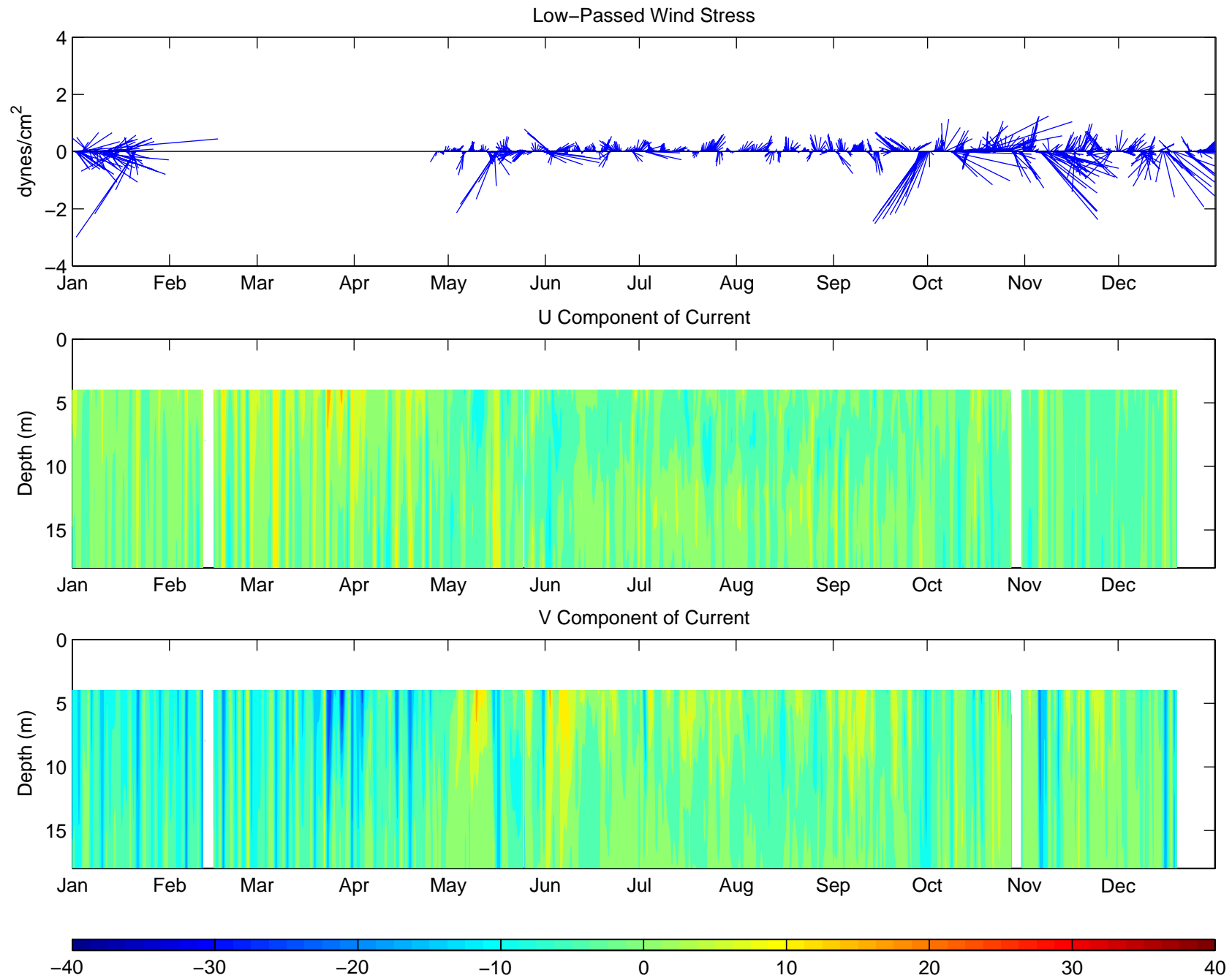
V Component of Current



Low-Pass Filtered Wind Stress and Profiling Current Meter Observations Site B, 2000

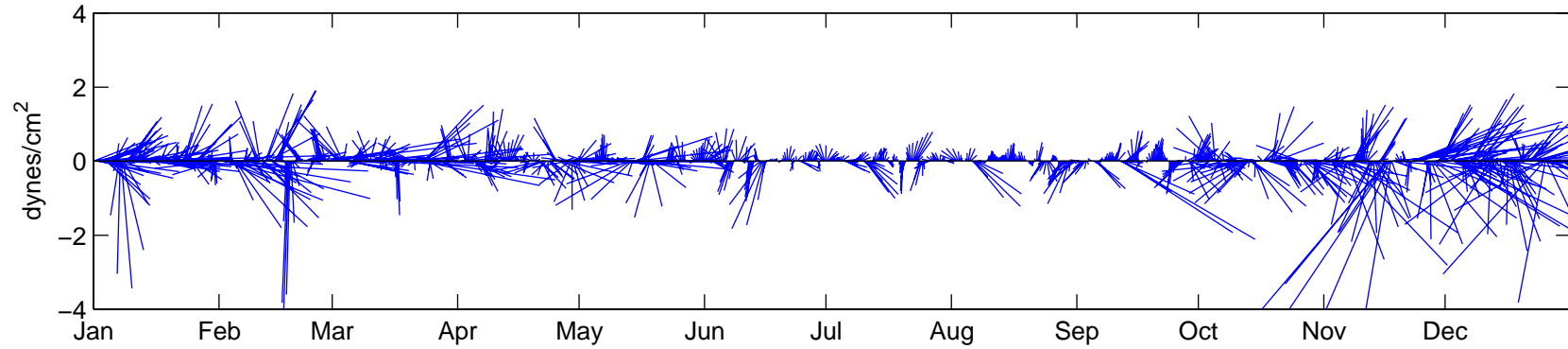


Low-Pass Filtered Wind Stress and Profiling Current Meter Observations Site B, 2001

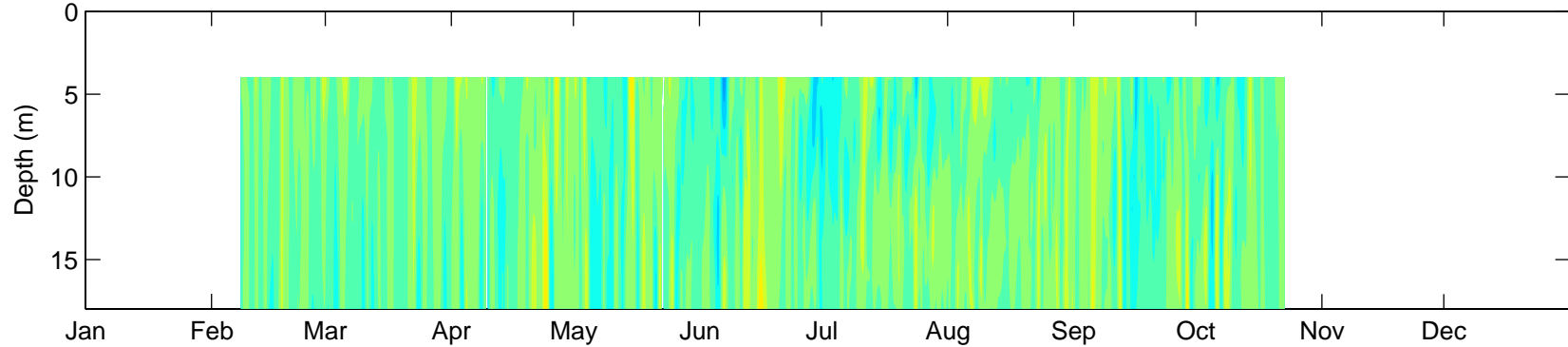


Low-Pass Filtered Wind Stress and Profiling Current Meter Observations Site B, 2002

Low-Passed Wind Stress



U Component of Current



V Component of Current

