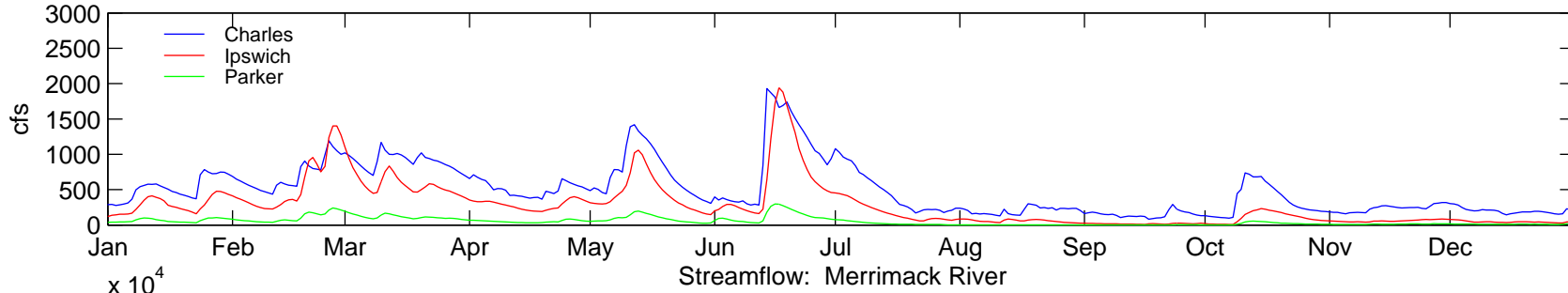
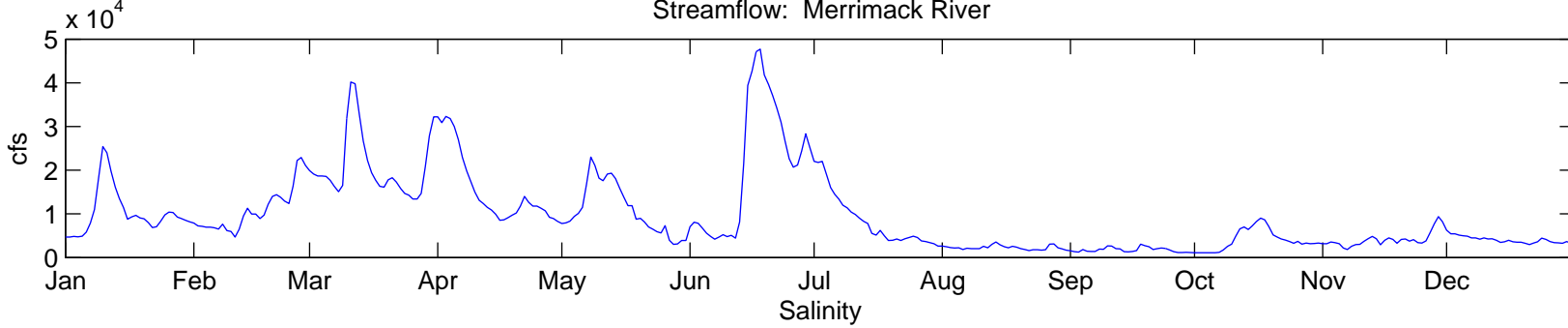


# River Streamflow, Salinity, and Temperature Site B, 1998

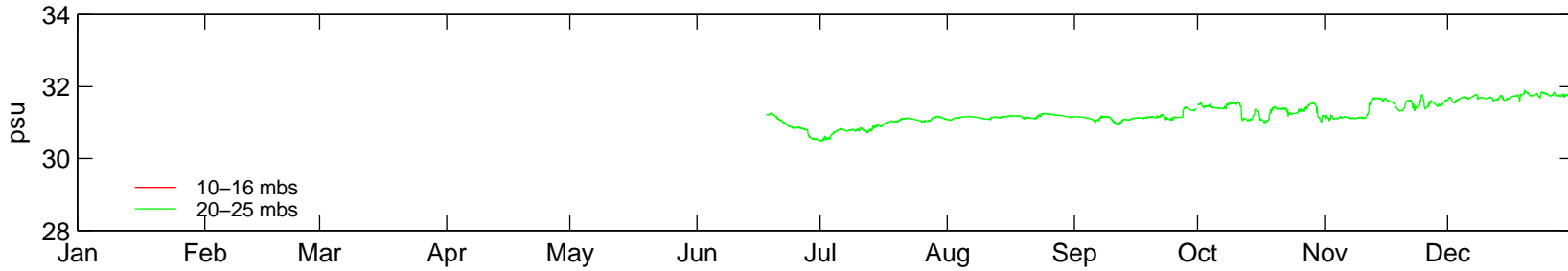
## Streamflow



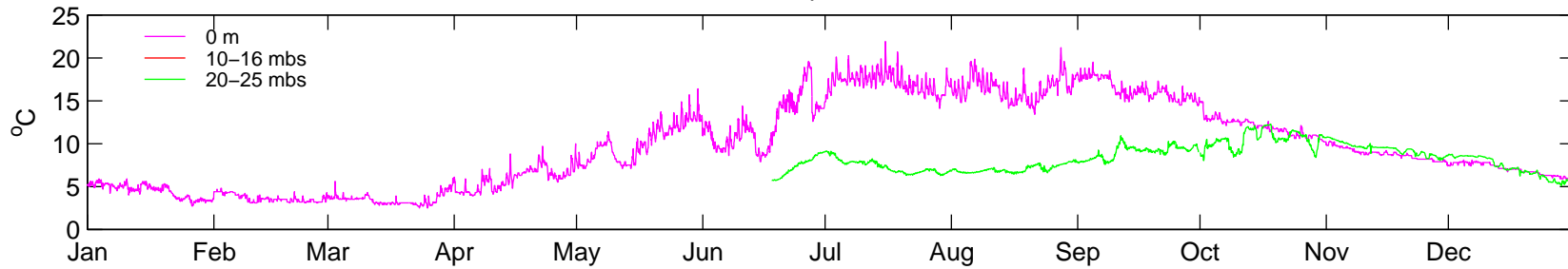
## Streamflow: Merrimack River



## Salinity

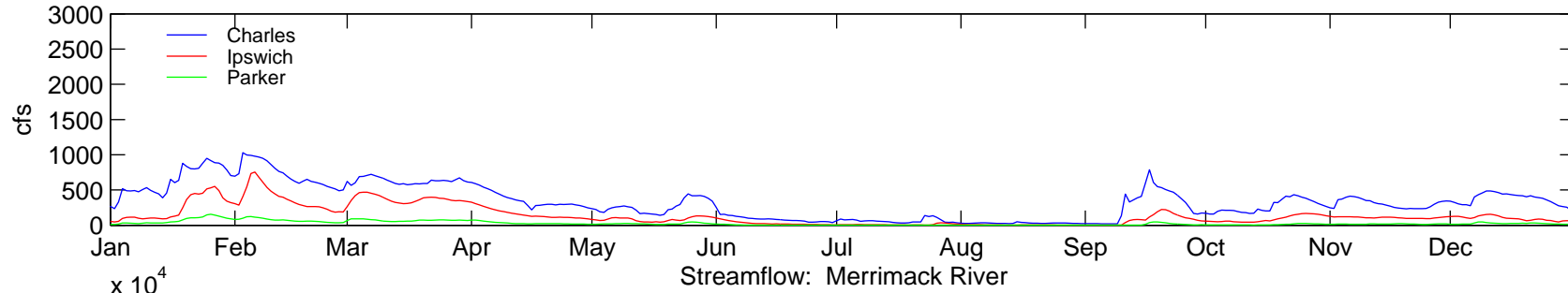


## Temperature

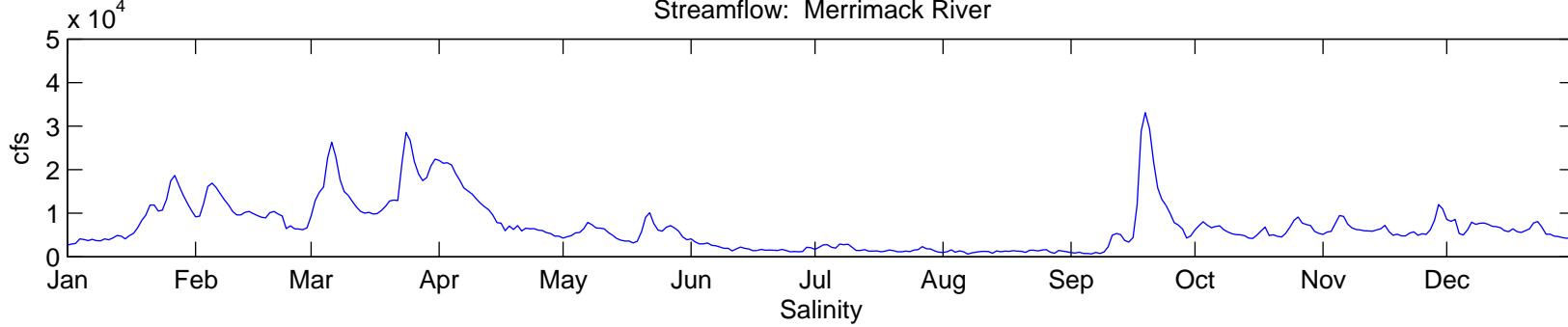


# River Streamflow, Salinity, and Temperature Site B, 1999

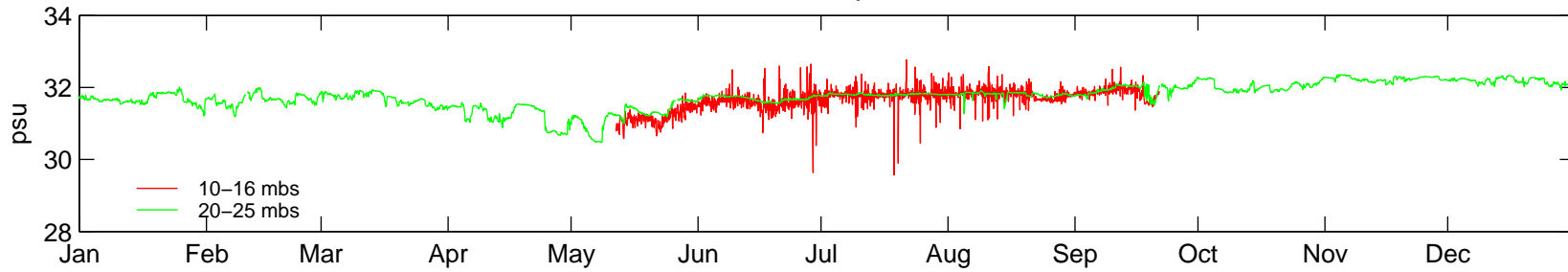
## Streamflow



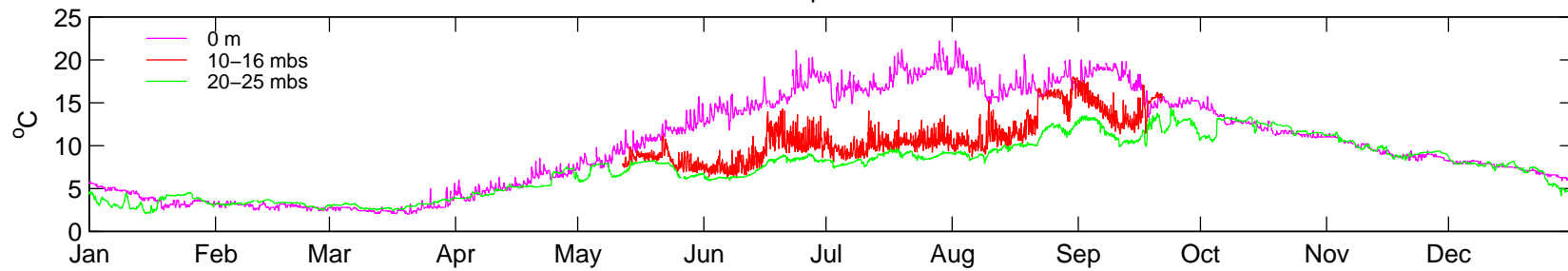
## Streamflow: Merrimack River



## Salinity

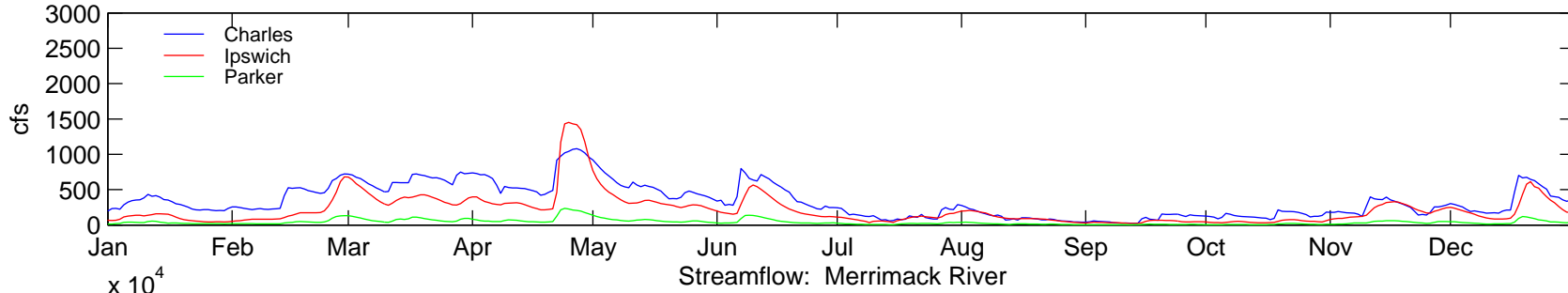


## Temperature

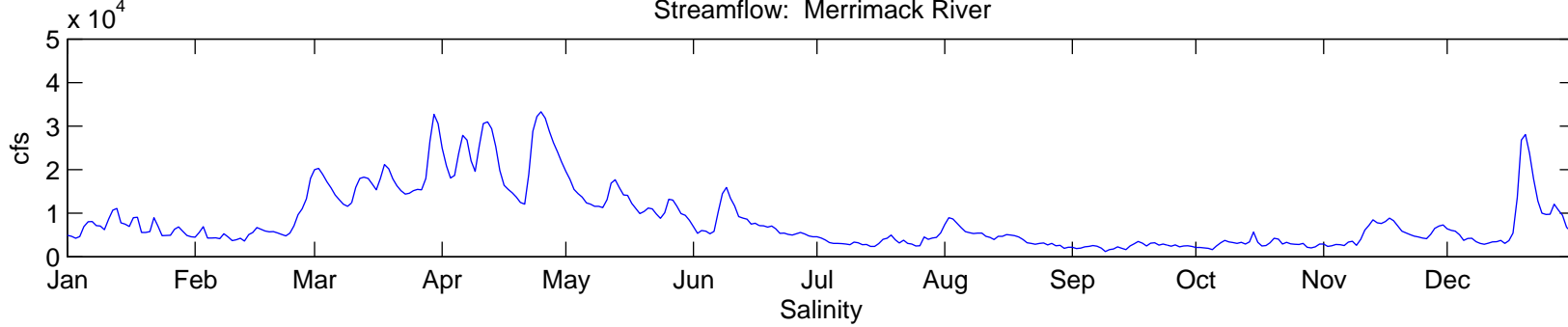


# River Streamflow, Salinity, and Temperature Site B, 2000

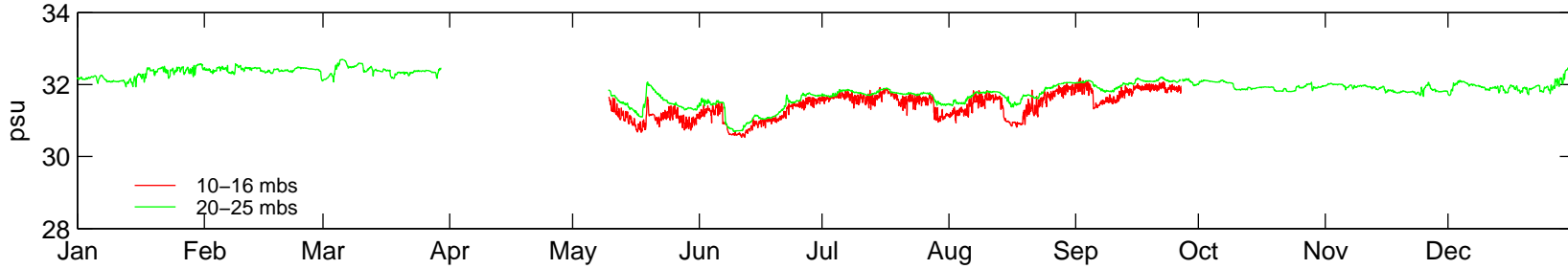
## Streamflow



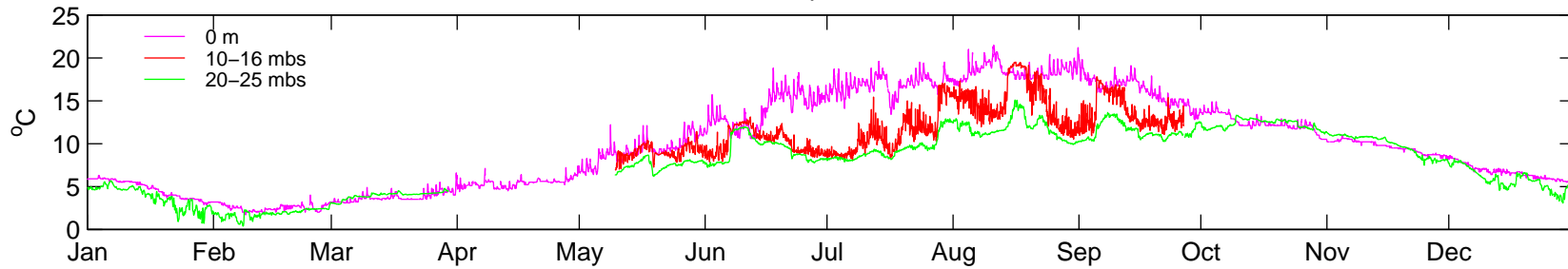
## Streamflow: Merrimack River



## Salinity

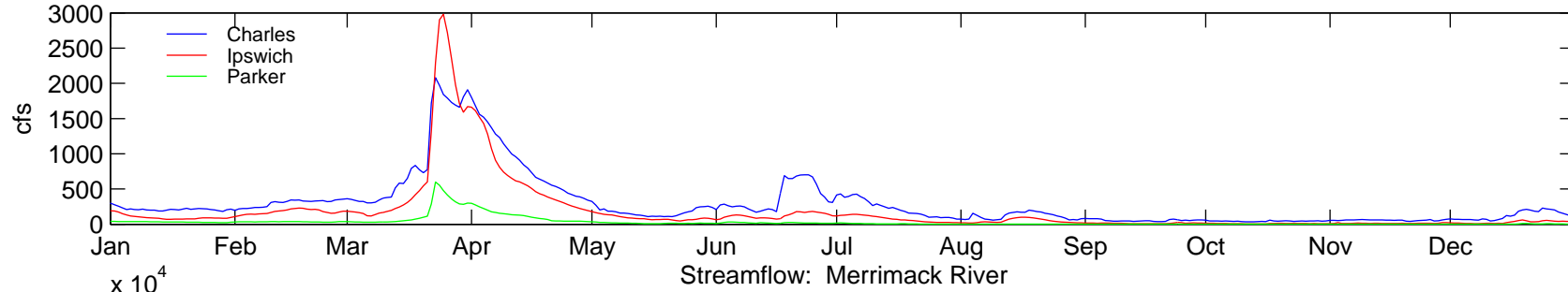


## Temperature

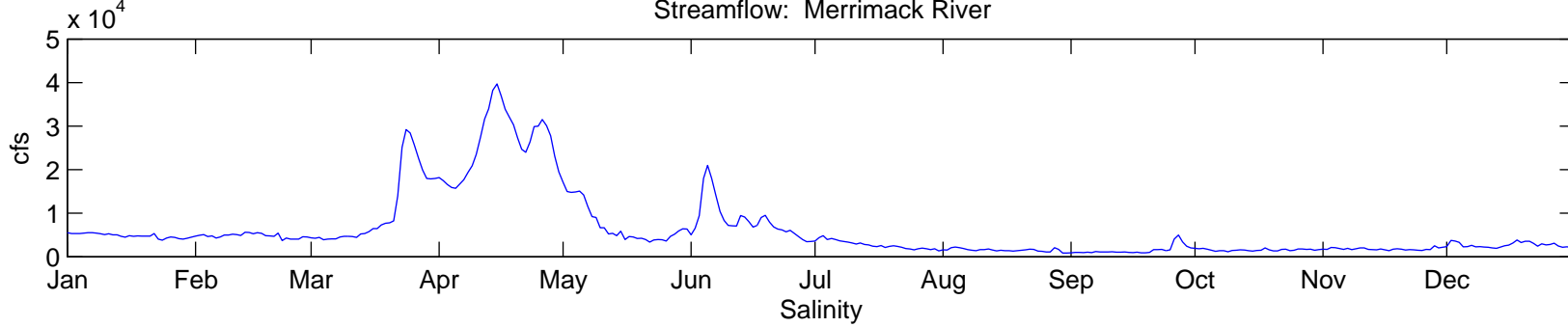


# River Streamflow, Salinity, and Temperature Site B, 2001

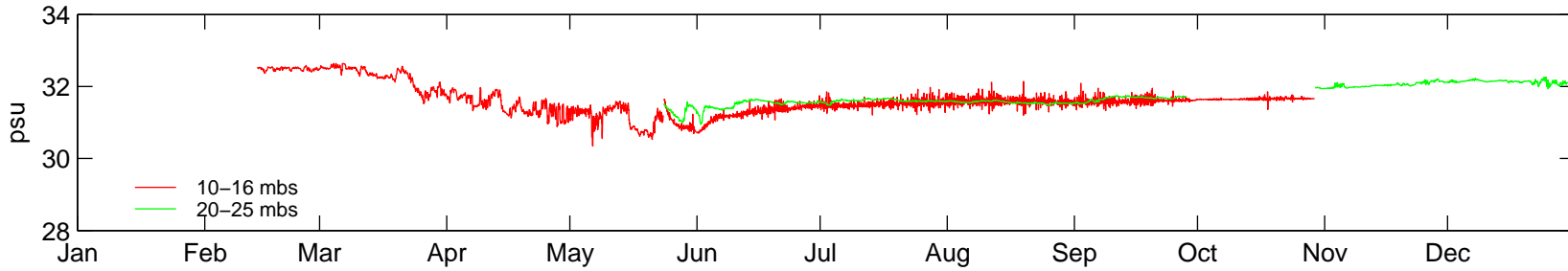
## Streamflow



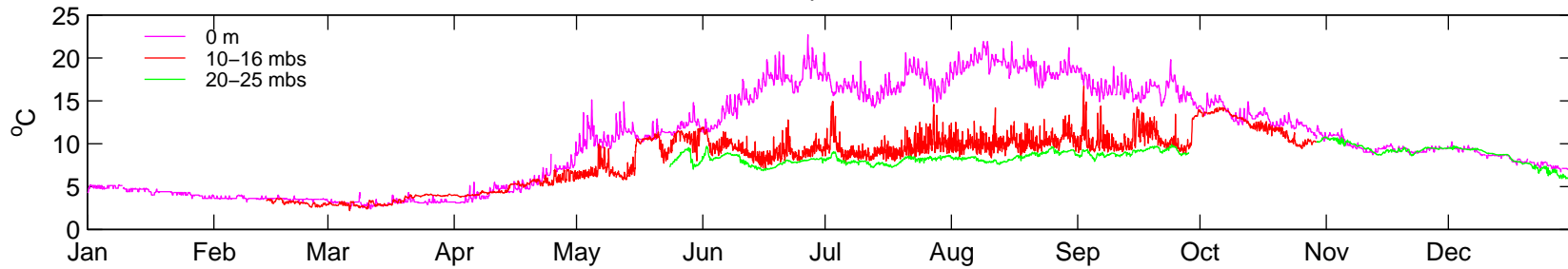
## Streamflow: Merrimack River



## Salinity

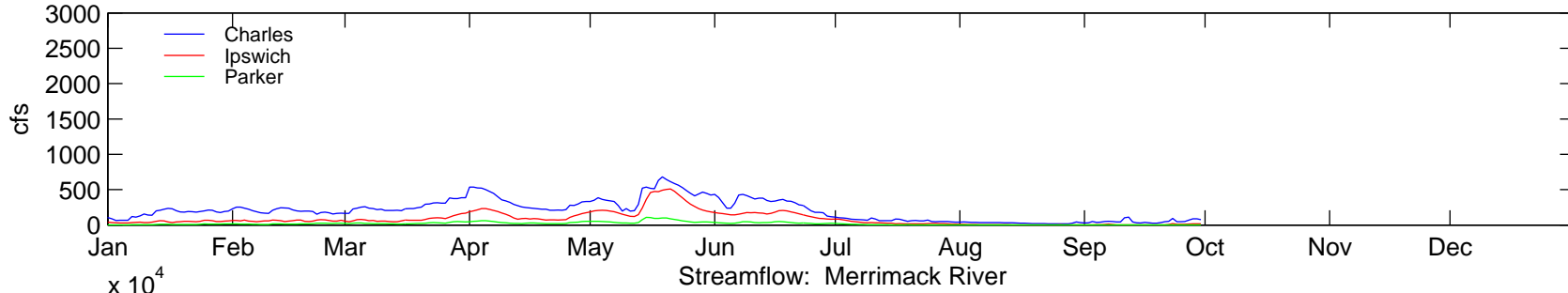


## Temperature

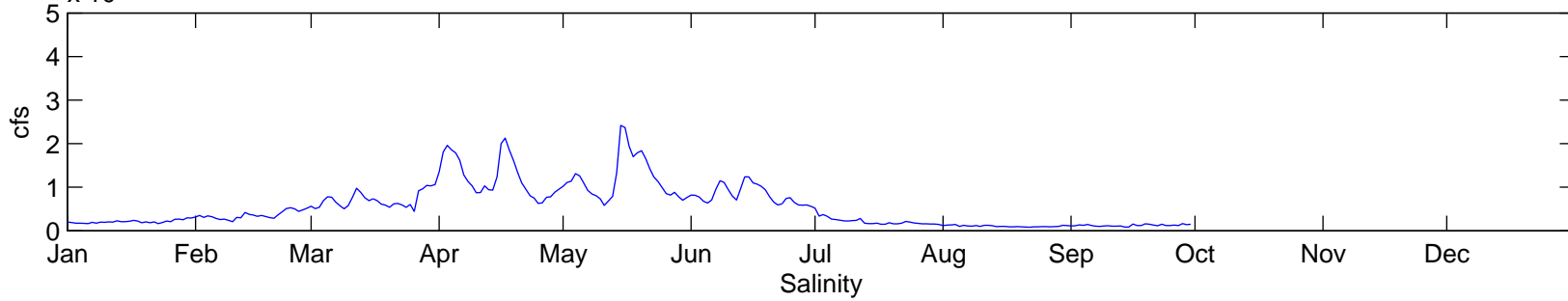


# River Streamflow, Salinity, and Temperature Site B, 2002

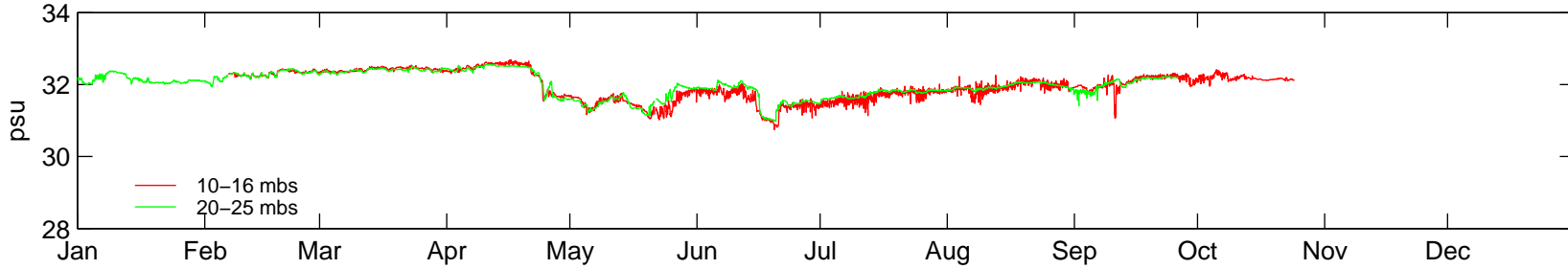
## Streamflow



## Streamflow: Merrimack River



## Salinity



## Temperature

